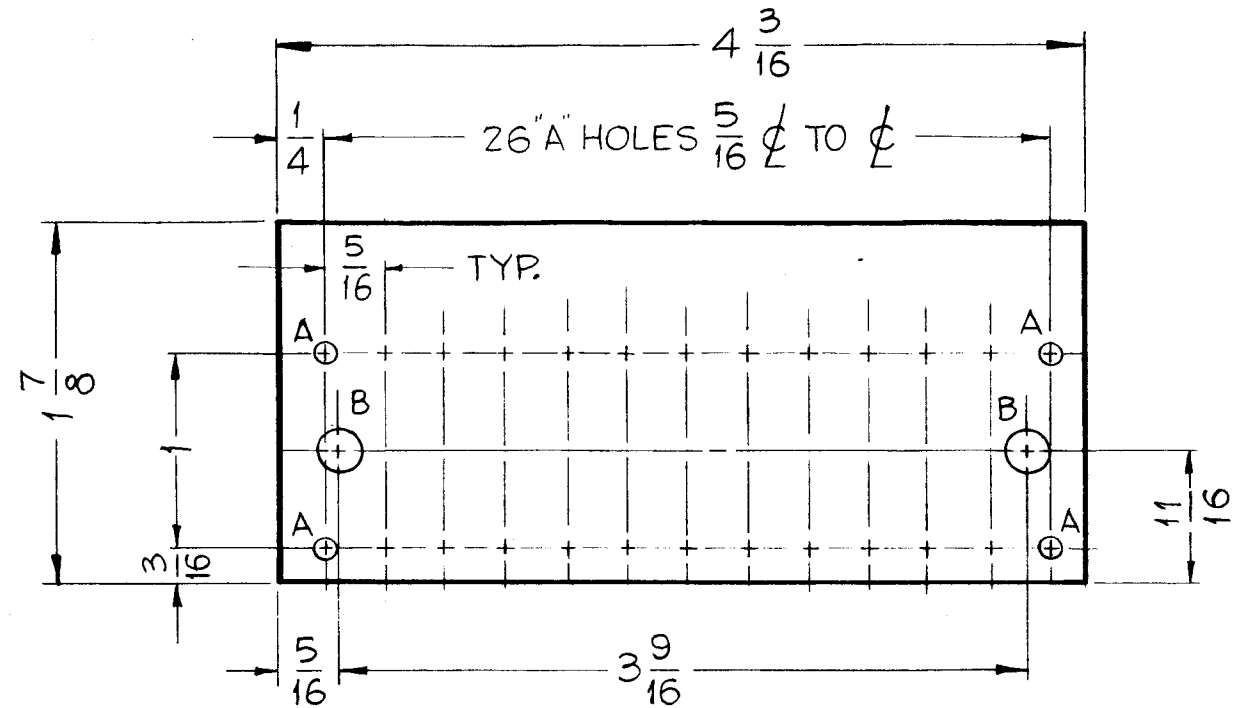


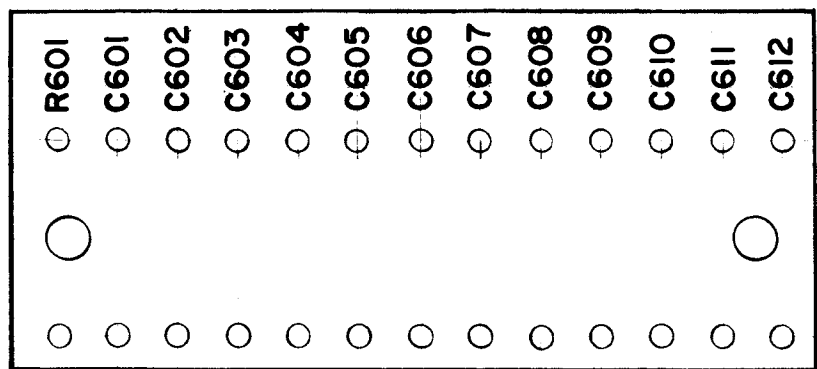
A-1971 C



A ~ .116 DIA. 26 Req.
B ~ .187 DIA. 2 Req.

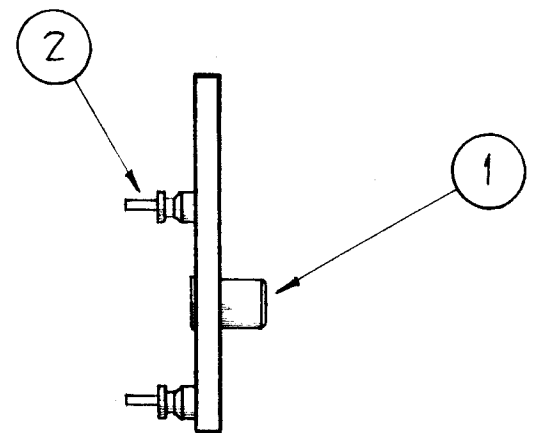
MACHINING
A-1971-1

MAT'L ~ 1/8 THICK, XXXP PHENOLIC.



ALL LETTERING 1/8 HIGH BLACK GOTHIC.
MARKING PROCESS: AS PER TMC SPECIFICATION S-727.

STAMPING
A-1971-2

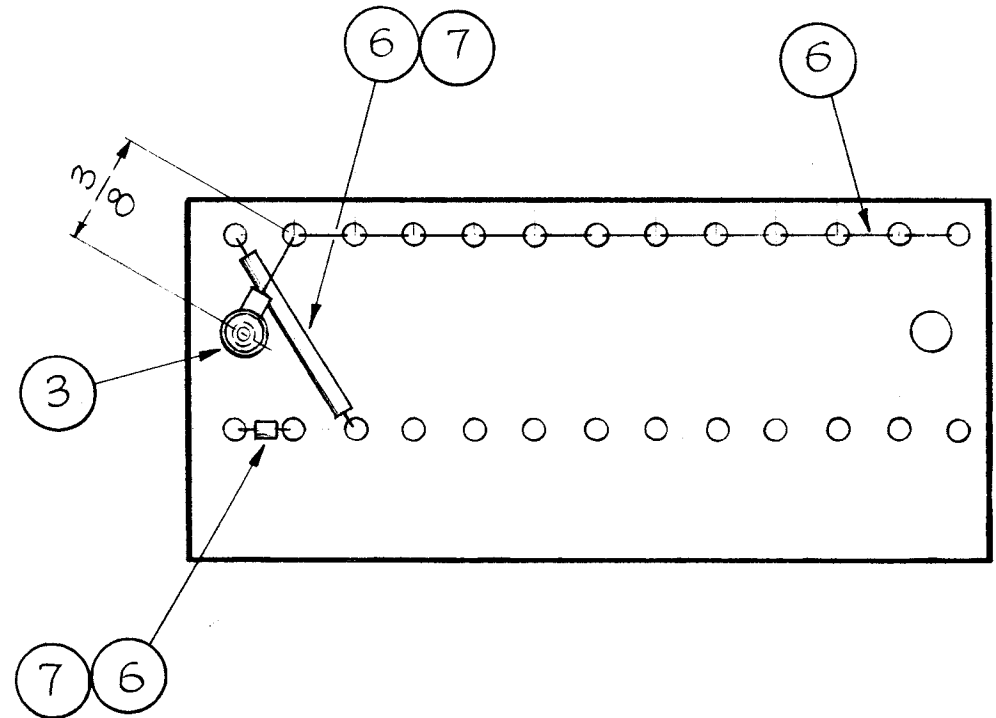


SUB-ASS'Y
A-1971-3

NOTICE TO PERSONS RECEIVING THIS DRAWING

THE TECHNICAL MATERIEL CORPORATION claims proprietary right in the material disclosed herein. This drawing is issued in confidence for engineering information only and may not be reproduced or used to manufacture anything shown hereon without permission from THE TECHNICAL MATERIEL CORPORATION to the user. This drawing is loaned for mutual assistance and is subject to recall at any time.

Property of:
THE TECHNICAL MATERIEL CORPORATION
MAMARONECK, NEW YORK



FINAL ASS'Y
A-1971-4

REQ.	ITEM	PART NO.	DESCRIPTION	SYMBOL
X	8	BS100	SOLDER, SOFT	
X	7	PX100-1-.022	INSULATION, SLEEVING	BLACK
X	6	WL100-7	WIRE, BUSS BAR	
12	5	CC100-16	CAPACITOR, FIXED, .01	C601 THRU 612
1	4	RW109-39	RESISTOR, FIXED	R601
1	3	TE125	TERMINAL, CORD TIP	
26	2	TE109-3	SPLIT TERMINAL LUG	
2	1	TE108-3	STANDOFF, RIVET TYPE	

ISSUE	ITEM	CHANGED FROM	DATE	CH. NO.	DRAFTS	CHECKER	ENG. APP.
C		CHG. IT 14-4070-39	9/16/71	20438	GE	WJ	RT
B	1	Item 5 was CC-100-6	3-31-61	4527	RU	CB	RT
A	2	A-1971-2 R601-612 WAS CS25-536	12-13-60	3697	M.A.F.	JOB	C
	1	ON A-1971-2 R601 WAS R505					

TOLERANCES: DEC. DIM. ±, FRAC. DIM. ± 1/64, ANGULAR DIM. ±

SCALE: FULL ~ (DO NOT SCALE)

MAXIMUM ALLOWABLE TOLERANCES HAVE BEEN DETERMINED AND ANY DEVIATIONS WILL BE CAUSE FOR REJECTION. REMOVE ALL BURRS AND SHARP EDGES

T	RAK-9	SBT-1K	9-16-60
REQ. PER UNIT	MODEL	PROJECT NO.	ASS'Y. NO.
			DATE

TYPE & TEMPER	HEAT TREAT. SPEC.	DRAWN	CHECKED	FINAL APPROVAL
		J.C. Biele	J.We	J.M.
FINISH & SPEC. NO.				A-1971 C