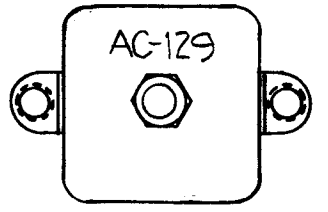
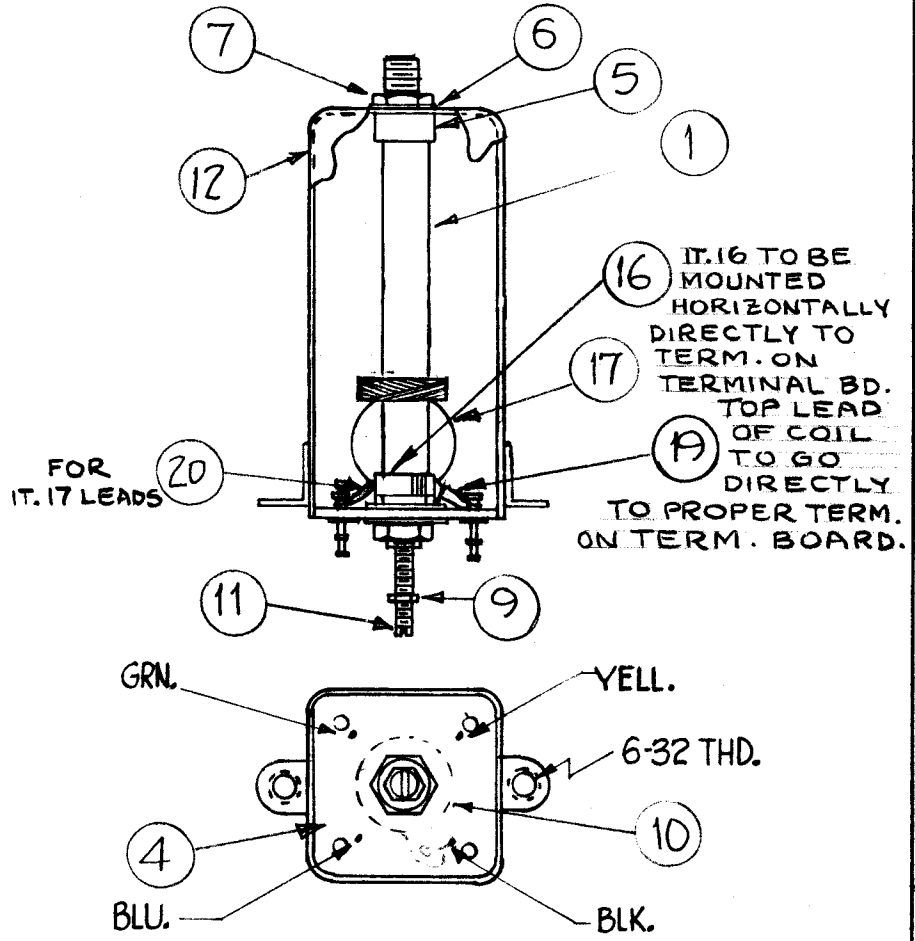


A-1967 D

STAMP CAN AS SHOWN 1/8 HIGH BLACK GOTHIC.
NOTE ~ STAMP TMC IN SIGNIA & APPROVAL ON
SIDE OF CAN.



CEMENT COIL FORM TO BUSHINGS WITH GL-103.



COLOR CODE TERMINAL BOARD AS SHOWN.

D		IT. 16 WAS RC20GF104J	9.27.66	16902	LW	Q/S	
C	4	WINDING DATA & PICT. UPDAT.					
	3	IT. 18 PX-104-4-.022 DELE.	9.3.64	12182	WB	@	
	2	IT. 15 TE-153-1 DELE.					
	1	IT. 13 WL-100-8 DELE.					
B	2	Item 11, was CI-116-6	12/21/60	3190	RU	hdc	
	1	Item 1, was CF-122-2.0					
A	1	ITEM 9 QUAN WAS 2	11-8-60	3423	V.F.	JCS	
ISSUE	ITEM	CHANGED FROM	DATE	CH. NO.	DRAFTS	CHECKER	ENG. APP.

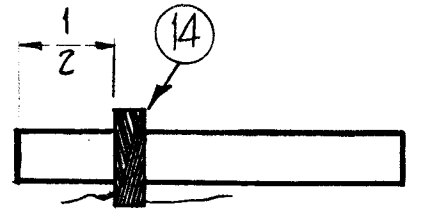
TOLERANCES		SCALE:	
DEC. DIM. ±		MAXIMUM ALLOWABLE TOLERANCES HAVE BEEN DETERMINED AND ANY DEVIATIONS WILL BE CAUSE FOR REJECTION.	
FRAC. DIM. ±		REMOVE ALL BURRS AND SHARP EDGES	
ANGULAR DIM. ±			

WINDING MACHINE DATA

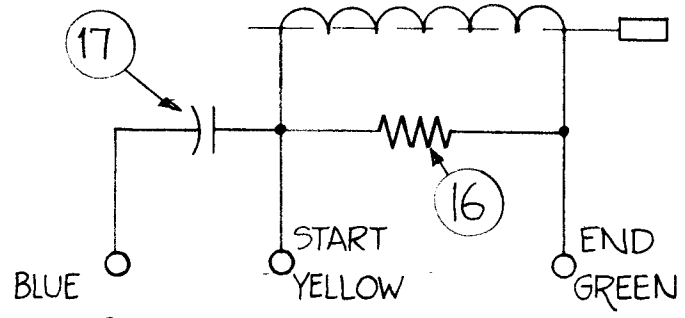
Cam Gear 49
Driver Gear 95
Cam .125

WINDING DATA

1. Start winding 1/2" from end of form.
2. End winding at 50 turns.
3. Keep all leads approximately 2" long.
4. Stake leads to coil form with item 2.
5. Bake unit for 1/2 hour at 215° F.
6. Coat windings and ring terminals with item 3.
7. Bake hard for 1/2 hour at 215° F.
8. Test as shown in test data.
9. Assemble as shown.



ACTUAL SIZE



TEST DATA (W/OUT CORE)

L = 22 uh (+ 1)
Q = 30 or Greater
Freq = 2.5 mc

X	20	PX-104-6-.022	Sleeving, Insulation	Blue
X	19	PX-104-2-.022	Sleeving, Insulation	Yellow
	18	DELETED		Green
1	17	CC-100-16	Capacitor, Disc	
1	16	RC20GF104J	Resistor, Fixed	
	15	DELETED		
X	14	WI-106-17	Wire, Magnet #36 DSC	
	13	DELETED		
1	12	A-1950-1	Can, Assembly	
1	11	CI-116-5	Core, Tuning	Red
1	10	TE-104-3	Lug	
1	9	NTH0348BN6	Nut, Hex	
X	8	BS-100	Solder Soft	
2	7	NTH0832BN8	Nut, Hex	
2	6	LWI08MRN	Lockwasher, Int.	
2	5	SM-140-2	Bushing, Coil Mtg.	
1	4	PX-585-1	Terminal Board	
X	3	GL-104-2	Insulex, U85	
X	2	GL-103	Cement, Duco	
1	1	CF-122-1.93	Coil Form .250 O.D.	
REQ. ITEM	PART NO.	DESCRIPTION	SYMBOL	

THE TECHNICAL MATERIEL CORP. MAMARONECK, NEW YORK			
AC-129 COIL ASSEMBLY MID FREQ AMPL, PLATE 6AH6			
TYPE & TEMPER	HEAT TREAT. SPEC.	DRAWN	CHECKED
		Q.R.F.	J.H.
FINISH & SPEC. NO.		ELEC. DES. APP.	MECH. DES. APP.
			A-1967 D

1	CHG-1	MF/RF	9-12-60
REQ. PER UNIT	MODEL	PROJECT NO.	ASS'Y. NO.
			DATE
USED ON			