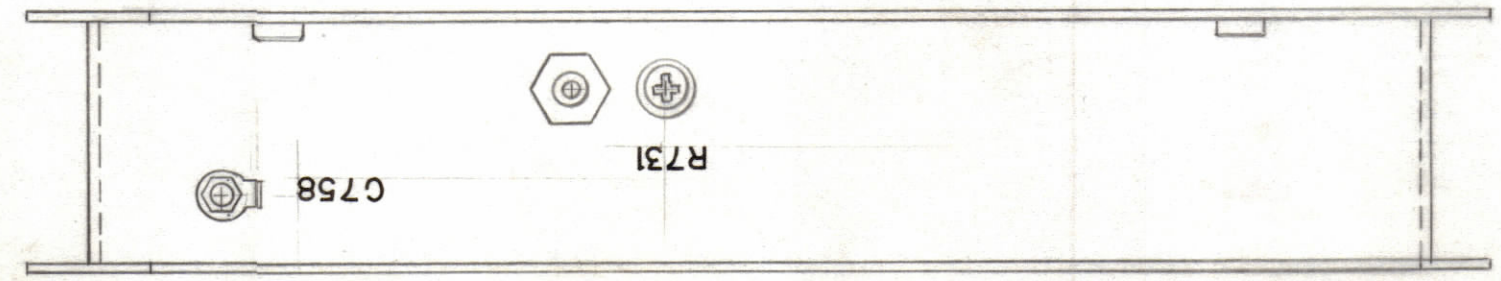
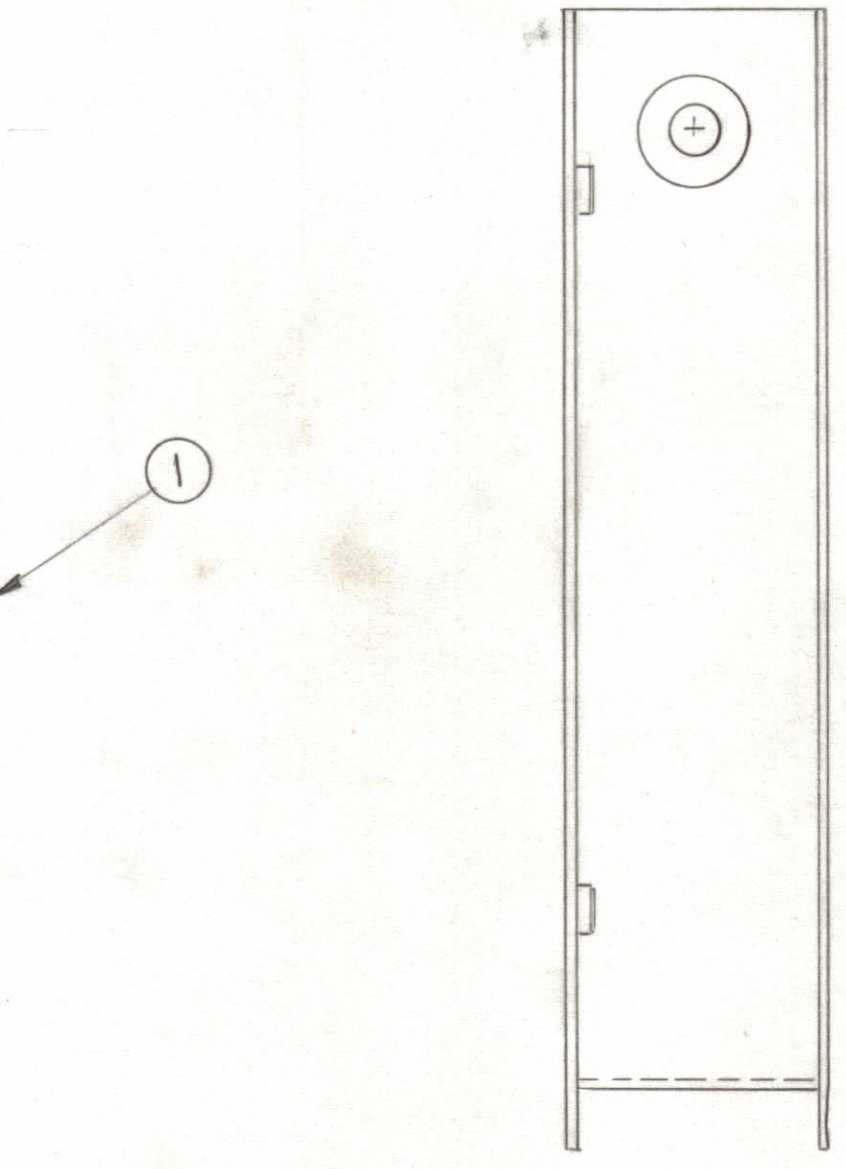
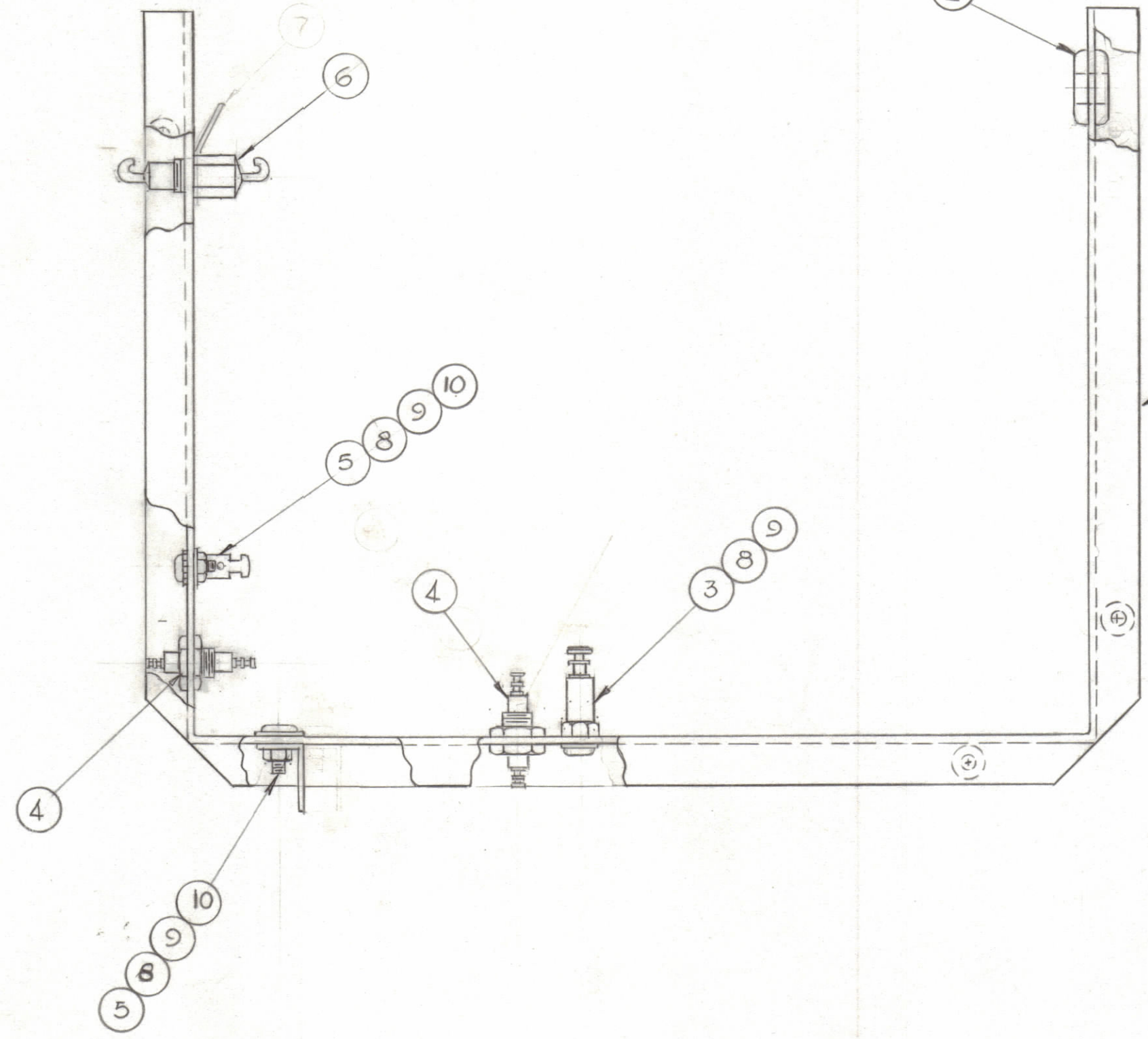
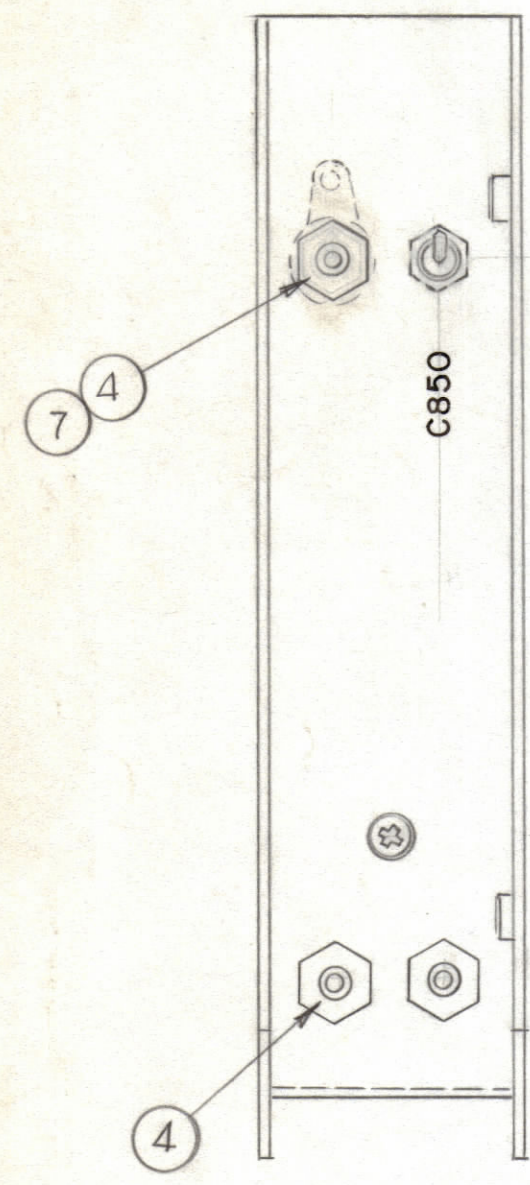


| REVISIONS | | | | | | | |
|-----------|-----|--|----------|------------|-------|------|------|
| ZONE | SYM | DESCRIPTION | DATE | E.M.N. NO. | DRAFT | CHKD | APPD |
| A | | DELE. C850 FR. IT4 & ADD IT TO IT6. DELE. DEC. PT. ITS | 11-15-66 | 17261 | RME | | |



| REQ'D. | ITEM | PART NUMBER | DESCRIPTION | SYMBOL |
|--------|------|------------------|-------------------------------------|--------|
| 2 | 10 | NTH0440 BNG | NUT, HEX | |
| 3 | 9 | LWE04MRN | LOCK WASHER, EXTERNAL | |
| 3 | 8 | SCBP0440BN 4 | SCREW, MACHINE | |
| 1 | 7 | TE-104-5 | TERMINAL, LUG | |
| 1 | 6 | CK70A202 M | CAPACITOR, FIXED, CERAMIC FEED THRU | C850 |
| 2 | 5 | TE-149-.120 | LUG, SOLDER | |
| 4 | 4 | TE-114-2 | TERMINAL, FEED-THRU | C850 |
| 1 | 3 | TE-102-2 | TERMINAL, TURRET | |
| 1 | 2 | EY-102-13 | GROMMET, RUBBER | |
| 1 | 1 | MS-2209-(LD-751) | WRAPAROUND, FRAME | |

| LIST OF MATERIAL | | | | |
|---|--|--|------|----------------|
| MATERIAL | | THE TECHNICAL MATERIEL CORP. MAMARONECK, NEW YORK | | |
| FINISH | | TITLE WRAPAROUND, FRAME ASSEMBLY | | |
| DRAWN | | G.D.L. | DATE | 3-19-63 |
| CHECKED | | J.P.C. | DATE | 3-20-63 |
| ELECT. DES. | | | DATE | |
| MECH. DES. | | | DATE | |
| UNLESS OTHERWISE SPECIFIED DIMENSIONS ARE IN INCHES AND INCLUDE CHEMICALLY APPLIED OR PLATED FINISHES | | FINAL APPROVAL RME | | |
| DECIMALS .X ± .05 .XX ± .01 .XXX ± .005 | | TOLERANCES ± 1/64 ANGLES ± 0° 30' | | DATE A-1964 |
| | | SHEET | | REV. LTR. A |

| CELL-1 | | |
|------------|---------------|------------|
| Q'TY./UNIT | MODEL USED ON | ASS'Y. NO. |
| SCALE | CODE | |

NOTES

THE CONTENTS OF THIS DRAWING ARE THE EXCLUSIVE PROPERTY OF THE TECHNICAL MATERIEL CORP. ITS UNAUTHORIZED USE OR REPRODUCTION IN WHOLE OR IN PART IS STRICTLY FORBIDDEN.

A-1964
A