

NOTICE TO PERSONS RECEIVING THIS DRAWING

THE TECHNICAL MATERIEL CORPORATION claims proprietary right in the material disclosed hereon. This drawing is issued in confidence for engineering information only and may not be reproduced or used to manufacture anything shown hereon without permission from THE TECHNICAL MATERIEL CORPORATION to the user. This drawing is loaned for mutual assistance and is subject to recall at any time.

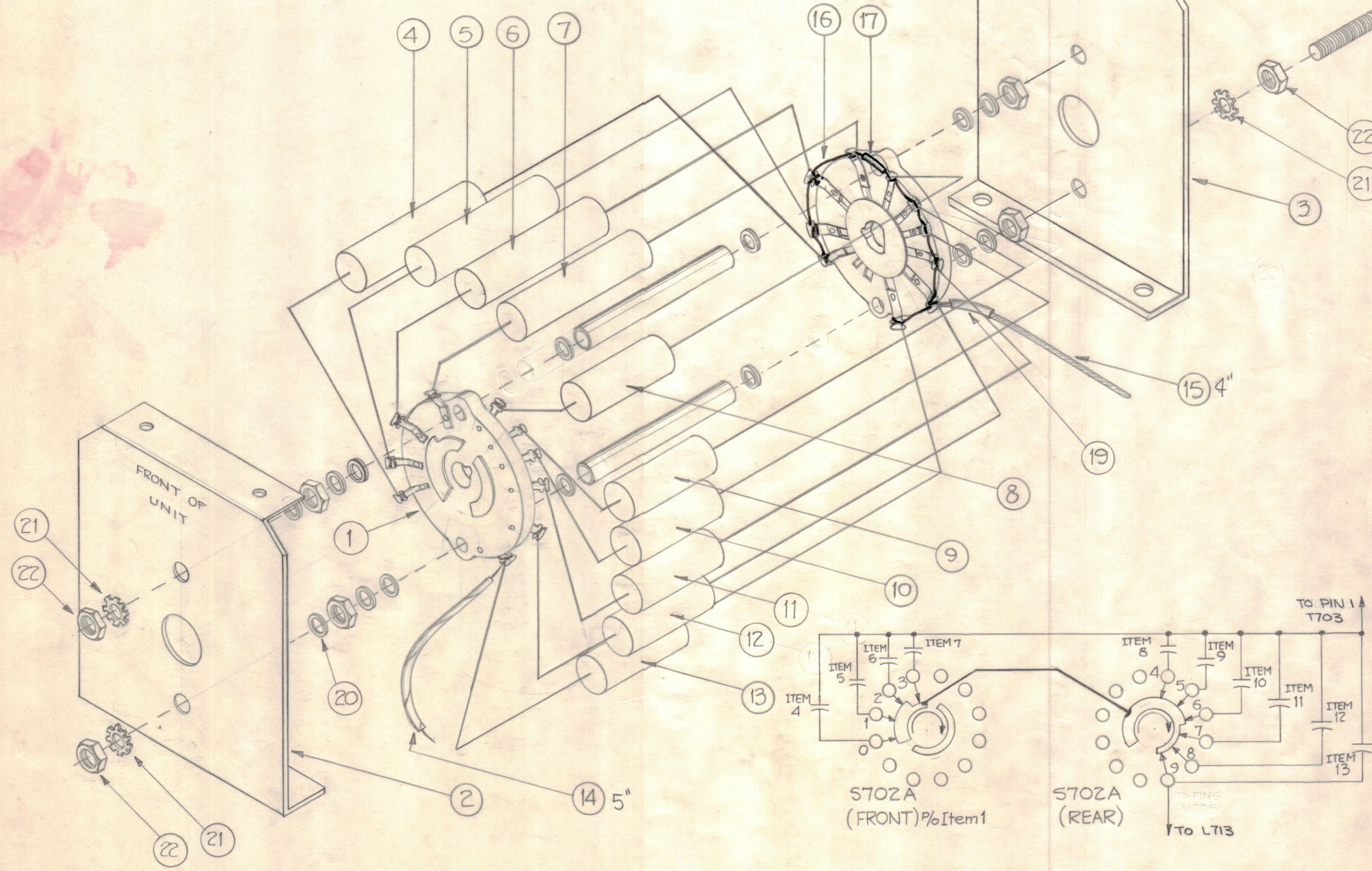
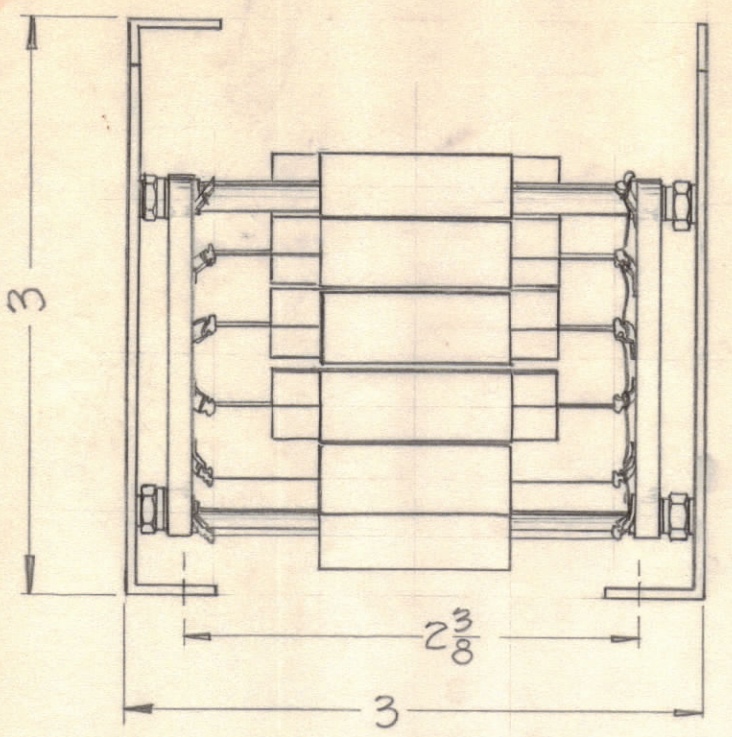
Property of:
THE TECHNICAL MATERIEL CORPORATION
MAMARONECK, NEW YORK

NOTE: Wafer Spacers, Rods, Washers & Nuts which are not itemized are part of Item 1, WS-112.

*Quantity of Item 20 to be determined upon Assembly.

4	22	NTH0540BN10	NUT, HEX.		
4	21	LWE05MRN	LOCKWASHER, EXT.		
*	20	WA-109-26	WASHER, FIBER, 1/4 O.D.		
X	19	PX-100-1-118	SLEEVING, SIZE 9		
X	18	BS-100	SOLDER, SOFT		
X	17	PX-104-7-034	SLEEVING		GREY
X	16	WL-100-7	WIRE, BUSS, #22		
4"	15	MWC22(7)SJ6	CABLE, INSULATED		BLUE
5"	14	MWC22(7)U9Z	"		wh/Red
1	13	CX-104-22	CAPACITOR, FIXED	.117uf	C830
1	12	▲ ▲ 21		.0133uf	C829
1	11	▲ ▲ 20		.0158uf	C828
1	10	▲ ▲ 19		.0186uf	C827
1	9	▲ ▲ 18		.0230uf	C826
1	8	▲ ▲ 17		.0277uf	C825
1	7	▲ ▲ 16		.0344uf	C824
1	6	▲ ▲ 15		.0434uf	C823
1	5	▲ ▲ 14		.0555uf	C822
1	4	CX-104-13	CAPACITOR, FIXED	.0735uf	C821
1	3	MS-2222	BRACKET, SWITCH MTG.		
1	2	MS-2221	BRACKET, SWITCH MTG. FRONT		
1	1	WS-112	WAFER ASSEMBLY		

REQ. ITEM	PART NO.	DESCRIPTION	SYMBOL
THE TECHNICAL MATERIEL CORP. MAMARONECK, NEW YORK			
STOCK SIZE			
MATERIAL			
5702A			
TYPE & TEMPER			
HEAT TREAT. SPEC.			
FINISH & SPEC. NO.			



C	2 ITEM 20 DELETED ITEM 14 WAS 5" ITEM 15 WAS 4"	5-5-64	16214	WV		
B	SCHEMATIC & B/M SYMBOLS REVISED	7/16-64	11874			
A	C4 CONNECTING LINE ADDED BET. ROTORS	5/5/64	11363	A.M.		
ISSUE	ZONE	DESCRIPTION	DATE	CH. NO.	DRAFTS	CHECKER
TOLERANCES			SCALE:			
DEC. DIM. ±			MAXIMUM ALLOWABLE TOLERANCES HAVE BEEN DETERMINED AND ANY DEVIATIONS WILL BE CAUSE FOR REJECTION.			
FRAC. DIM. ±			REMOVE ALL BURRS AND SHARP EDGES			
ANGULAR DIM. ±						

1	CLL-1			9-2-60
REQ PER UNIT	MODEL	SECTION	ASS'Y. NO.	DATE