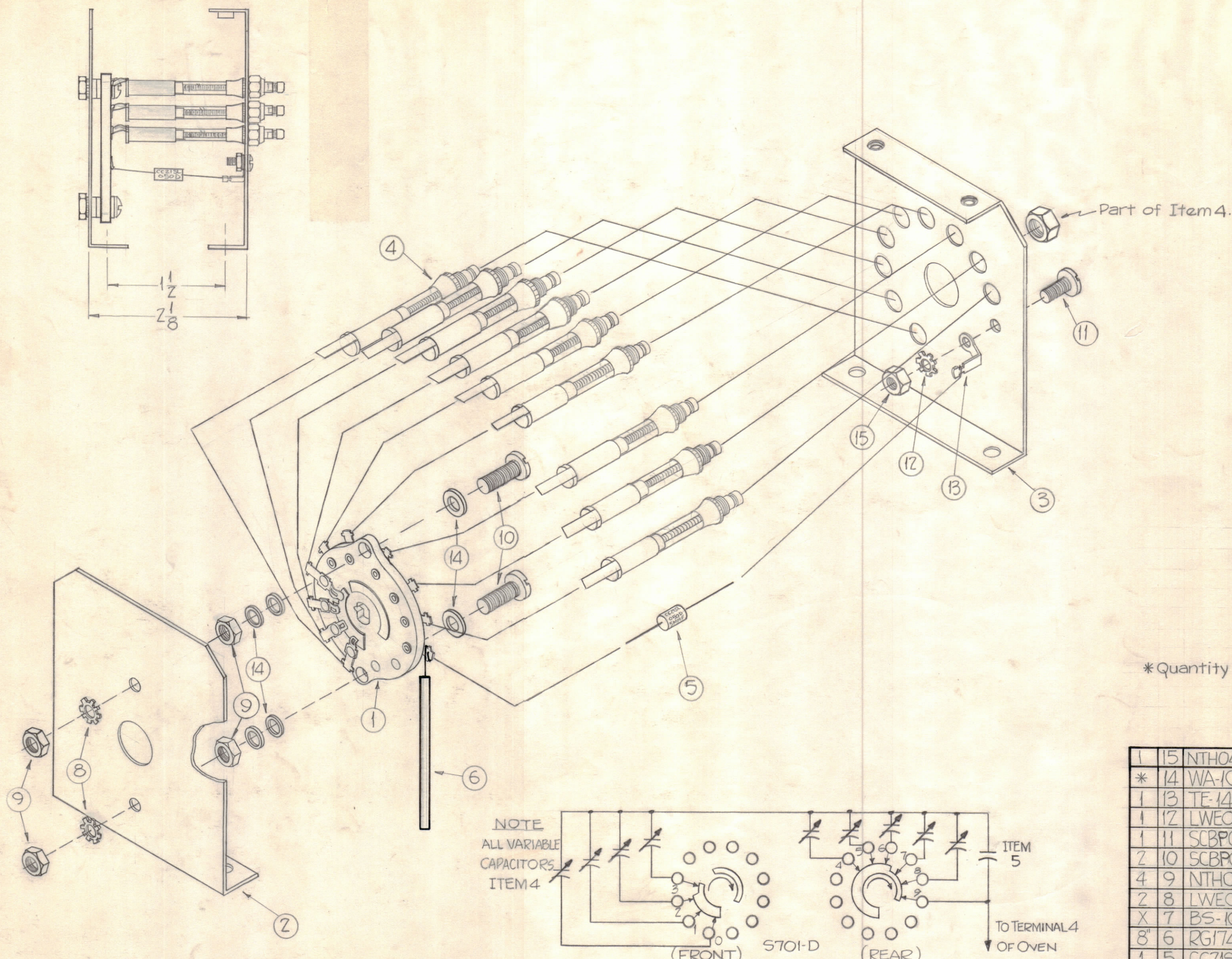
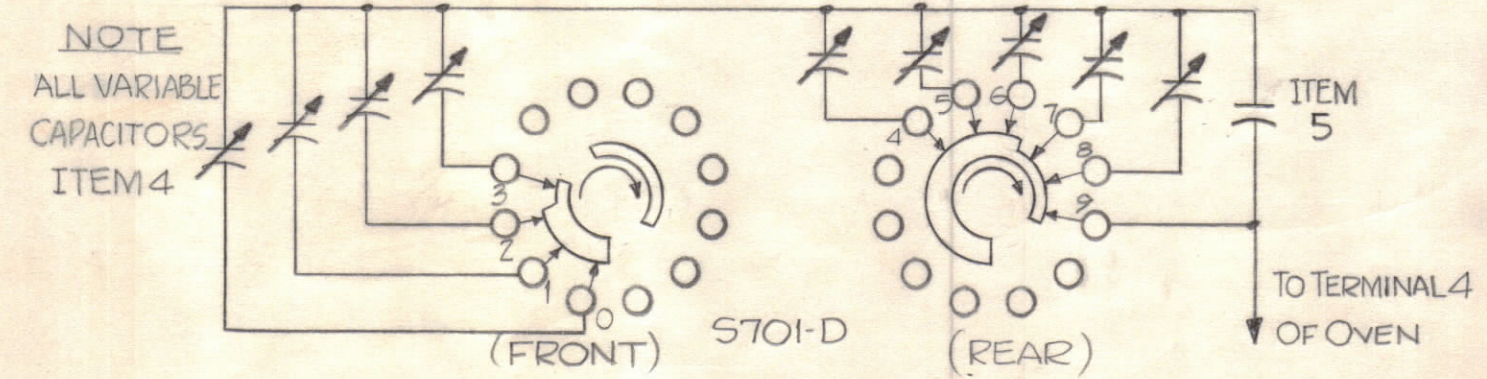


**NOTICE TO PERSONS RECEIVING THIS DRAWING**  
 THE TECHNICAL MATERIEL CORPORATION claims proprietary right in the material disclosed hereon. This drawing is issued in confidence for engineering information only and may not be re-used or used to manufacture anything shown hereon without permission from THE TECHNICAL MATERIEL CORPORATION to the user. This drawing is loaned for mutual assistance and is subject to recall at any time.  
 Property of:  
 THE TECHNICAL MATERIEL CORPORATION  
 MAMARONECK, NEW YORK



\*Quantity of item 12 to be determined upon Ass'y.

1	15	NTH0440BN8	Nut, Hex	
*	14	WA-109-26	Washer, Fiber	
1	13	TF-149-170	Lug, Solder	
1	12	LWEO4MRN	Lockwasher, Ext.	
1	11	SCBP0440BN5	Screw, Machine	
2	10	SCBP0540BN8	Screw, Machine	
4	9	NTH0540BN10	Nut, Hex	
2	8	LWEO5MRN	Lockwasher, Ext.	
X	7	BS-100	Solder, Soft	
8	6	RG174/U	Wire	BLACK
1	5	CC215L050D	Capacitor, Fixed, Ceramic 5uuf	C781
9	4	CV-101-3	Capacitor, Variable, Ceramic, 1.0-12.0mmfd	C772 TO C780
1	3	LD-750/MS2220	Lettering, Bracket, Left, Cap. Mtg.	
1	2	MS-2222	Bracket, Switch Mounting	
1	1	WS-113	Wafer, Switch Ass'y	5701-D
REQ. ITEM	PART NO.	DESCRIPTION		SYMBOL



B	IT. 10 WAS SCBS0540BN8, IT. 11 WAS SCBS0440BN5. ADD MS2220 TO IT. 5 & 5701-D TO IT.	10/19/66	17049	RME		
A	ADD ② IT. 9 TO DICT. & BUILD-UP	5-5-66	16214	WHD		
ISSUE ZONE	DESCRIPTION	DATE	CH. NO.	DRAFTS	CHECKER	ENG. APP.
TOLERANCES		SCALE:				
DEC. DIM. ±		MAXIMUM ALLOWABLE TOLERANCES HAVE BEEN DETERMINED AND ANY DEVIATIONS WILL BE CAUSE FOR REJECTION. REMOVE ALL BURRS AND SHARP EDGES				
FRAC. DIM. ±						
ANGULAR DIM. ±						

1	CLL-1			10-24-60
REQ PER UNIT	MODEL	SECTION	ASSY. NO.	DATE

THE TECHNICAL MATERIEL CORP. MAMARONECK, NEW YORK			
SWITCH, ASSEMBLY			
5701-D			
TYPE & TEMPER	D. J. Mann	S. D.	
HEAT TREAT. SPEC.	DRAWN	ELEC. DES. APP.	MECH. DES. APP.
FINISH & SPEC. NO.	CHECKED	FINAL APPROVAL	
		A-1959 B	