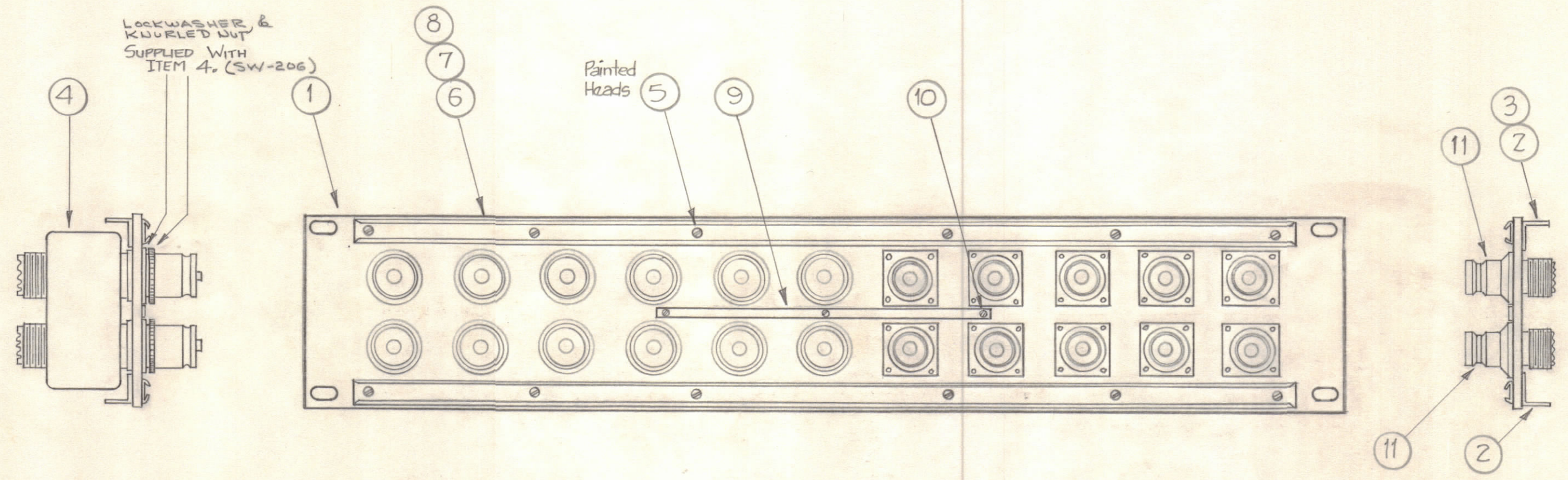


NOTICE TO PERSONS RECEIVING THIS DRAWING

THE TECHNICAL MATERIEL CORPORATION claims proprietary right in the material disclosed hereon. This drawing is issued in confidence for engineering information only and may not be reproduced or used to manufacture anything shown hereon without permission from THE TECHNICAL MATERIEL CORPORATION to the user. This drawing is loaned for mutual assistance and is subject to recall at any time.

Property of:
THE TECHNICAL MATERIEL CORPORATION
MAMARONECK, NEW YORK



NOTE - TP-109 (ITEM 12)
SUPPLIED AS LOOSE ITEM.

1	12	TP-109	WRENCH SOCKET
10	11	JJ-147	ADAPTER, CONNECTOR
3	10	SFB0256503	SCREW, THREAD CUTTING
1	9	NP-251	NAMEPLATE, IDENTIFICATION
2	8	PX-396-17	TAB, GUARD
2	7	PR-101-17	TAB, PAPER
2	6	MS-1184	TAB, HOLDER
12	5	SCFS0348BC3	SCREW, MACHINE
6	4	SW-206	SWITCH, R.F.
12	3	SCFS0632BC5	SCREW, MACHINE
2	2	PM-490	BRACE, PANEL
1	1	MS-2370	FRONT, PANEL

REQ. ITEM	PART NO.	DESCRIPTION	SYMBOL
	LT	STOCK SIZE	
	LT	MATERIAL	
	LT	TYPE & TEMPER	
	LT	HEAT TREAT. SPEC.	
	LT	FINISH & SPEC. NO.	

ISSUE ZONE	DESCRIPTION	DATE	CH. NO.	DRAFTS	CHECKER	ENG. APP.

TOLERANCES: DEC. DIM. ±, FRAC. DIM. ±, ANGULAR DIM. ±

SCALE: MAXIMUM ALLOWABLE TOLERANCES HAVE BEEN DETERMINED AND ANY DEVIATIONS WILL BE CAUSE FOR REJECTION. REMOVE ALL BURRS AND SHARP EDGES

REQ PER UNIT	MODEL	SECTION	ASS'Y. NO.	DATE
1	SPP-13			8-31-60

THE TECHNICAL MATERIEL CORP.
MAMARONECK, NEW YORK

MAIN, ASSEMBLY

DRWN: [Signature] ELEC. DES. APP.: [Signature] MECH. DES. APP.: [Signature]

CHECKED: [Signature] FINAL APPROVAL: [Signature]

A-1953