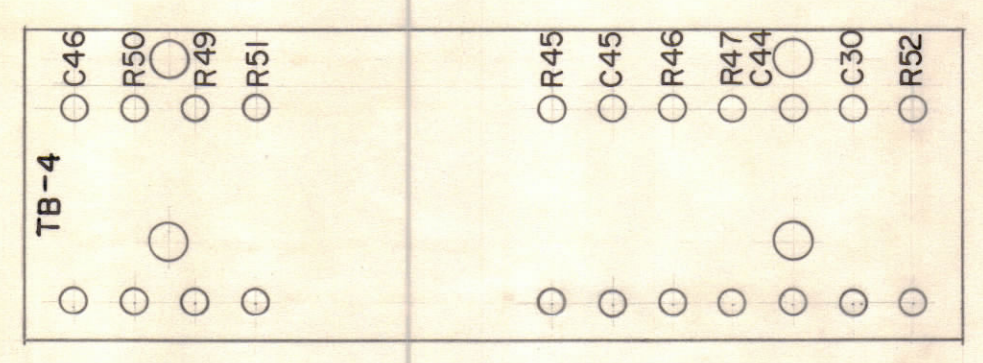
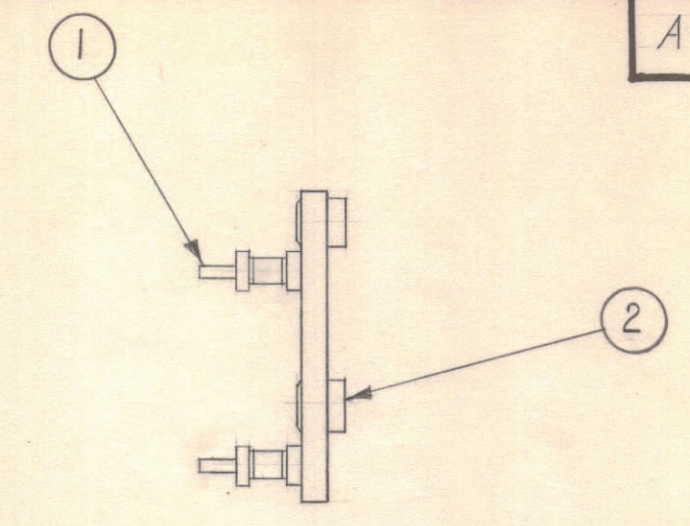


MACHINING - A-1949-1
MATERIAL - 1/8" XXXP, PHENOLIC, FINISH-NATURAL.

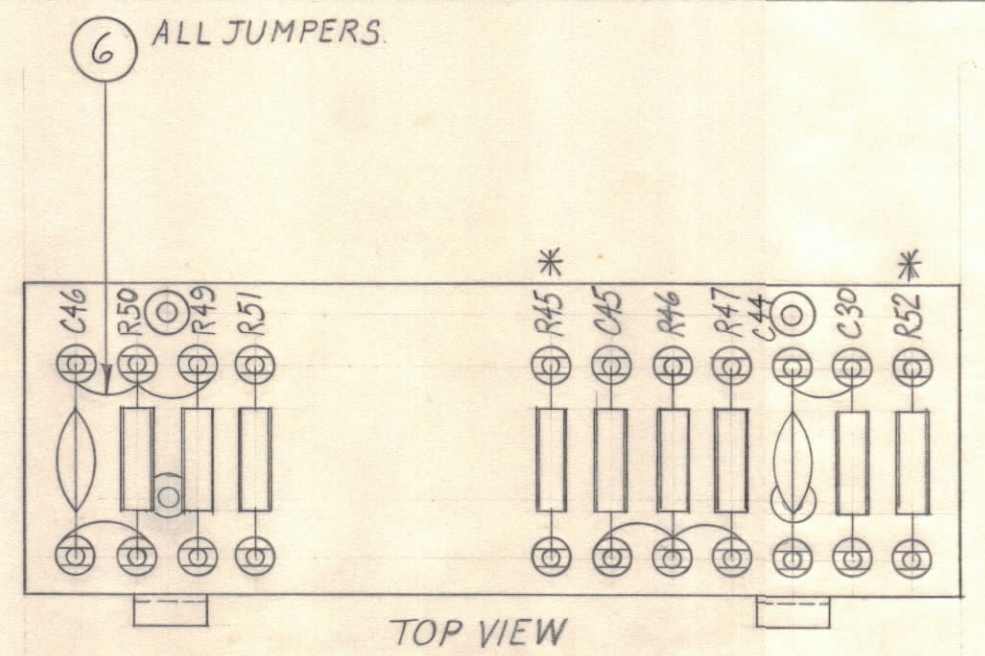


STAMPING TO BE 1/8 HIGH BLACK GOTHIC.

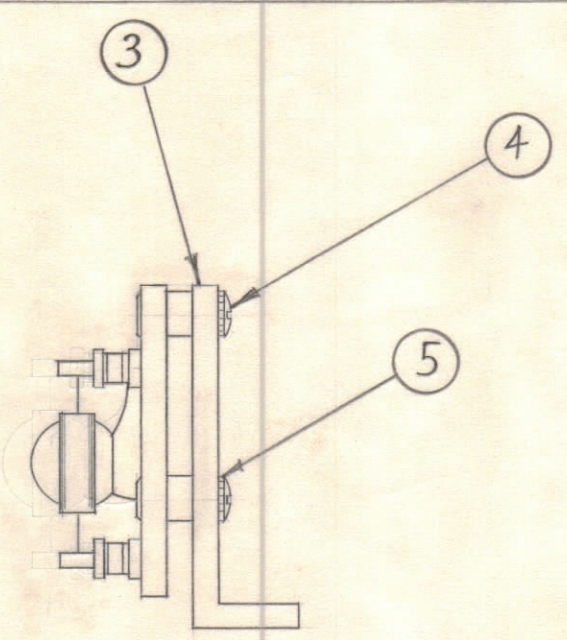
STAMPING - A-1949-2



SUB-ASSEMBLY (A-1949-3)

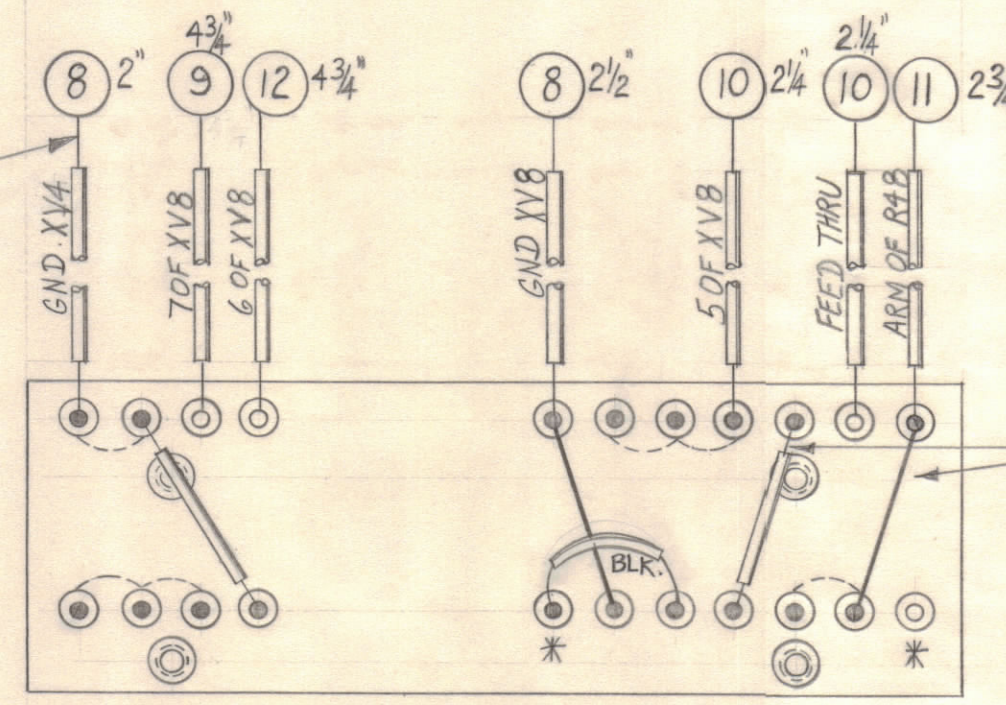


TOP VIEW



SLEEVING LENGTH (TYR)

NOTE: BRACKETS, ITEM 3, DELETED FROM THIS VIEW FOR WIRING CLARITY.



REAR VIEW

ELECTRICAL ASSEMBLY (A-1949-4)

* DO NOT SOLDER THIS END OF R45 & R52

X	24	BS-100	SOLDER, SOFT	
1	23	RC 20GF563K	RESISTOR, FIXED, COMP.	R52
1	22	RC 20GF333K		R51
1	21	RC 20GF102K		R50
1	20	RC 20GF181K		R49
1	19	RC 20GF823K		R47
1	18	RC 20GF124K		R46
1	17	RC 20GF474K	RESISTOR, FIXED, COMP.	R45
1	16	CC-100-15	CAPACITOR, FIXED, CERAMIC	C46
1	15	CC 21SL220J		C45
1	14	CC-100-9		C44
1	13	CC32CH101J	CAPACITOR, FIXED, CERAMIC	C30
4 3/4	12	PX-104-9-.034	INSULATION, SLEEVING (SIZE 20)	VIOLET
2 3/4	11	-6		BLUE
4 1/2	10	-4		GREEN
4 3/4	9	-2		YELLOW
7 1/4	8	PX-104-1-.034	INSULATION, SLEEVING (SIZE 20)	BLACK
26 1/2	7	WL-100-7	WIRE, BUSS (SIZE 22)	
X	6	WL-100-8	WIRE, BUSS (SIZE 24)	
4	5	LWEO6MRN	LOCKWASHER, EXTERNAL.	
4	4	SCBS0632BNG	SCREW, MACHINE	
2	3	MS-1321	BRACKET, ANGLE, TERM. BD.	
4	2	TE-108-8	STANDOFF, RIVET TYPE	
22	1	TE-109-3	TERMINAL, LUG	

REQ. ITEM	PART NO.	DESCRIPTION	SYMBOL
1/8" STOCK SIZE			
		THE TECHNICAL MATERIEL CORP.	
		MAMARONECK, NEW YORK	
		PHENOLIC MATERIAL	TERMINAL BOARD #4 ASSEMBLY
		XXXP TYPE & TEMPER	
		NATURAL FINISH & SPEC. NO.	
		HEAT TREAT. SPEC.	

ISSUE	ZONE	DESCRIPTION	DATE	CH. NO.	DRAFTS	CHECKER	ENG. APP.
TOLERANCES			SCALE:				
DEC. DIM. ±			MAXIMUM ALLOWABLE TOLERANCES HAVE BEEN DETERMINED AND ANY DEVIATIONS WILL BE CAUSE FOR REJECTION.				
FRAC. DIM. ±			REMOVE ALL BURRS AND SHARP EDGES				
ANGULAR DIM. ±							

REQ PER UNIT	MODEL	SECTION	ASSY. NO.	DATE
1	MSR-6			8-23-60