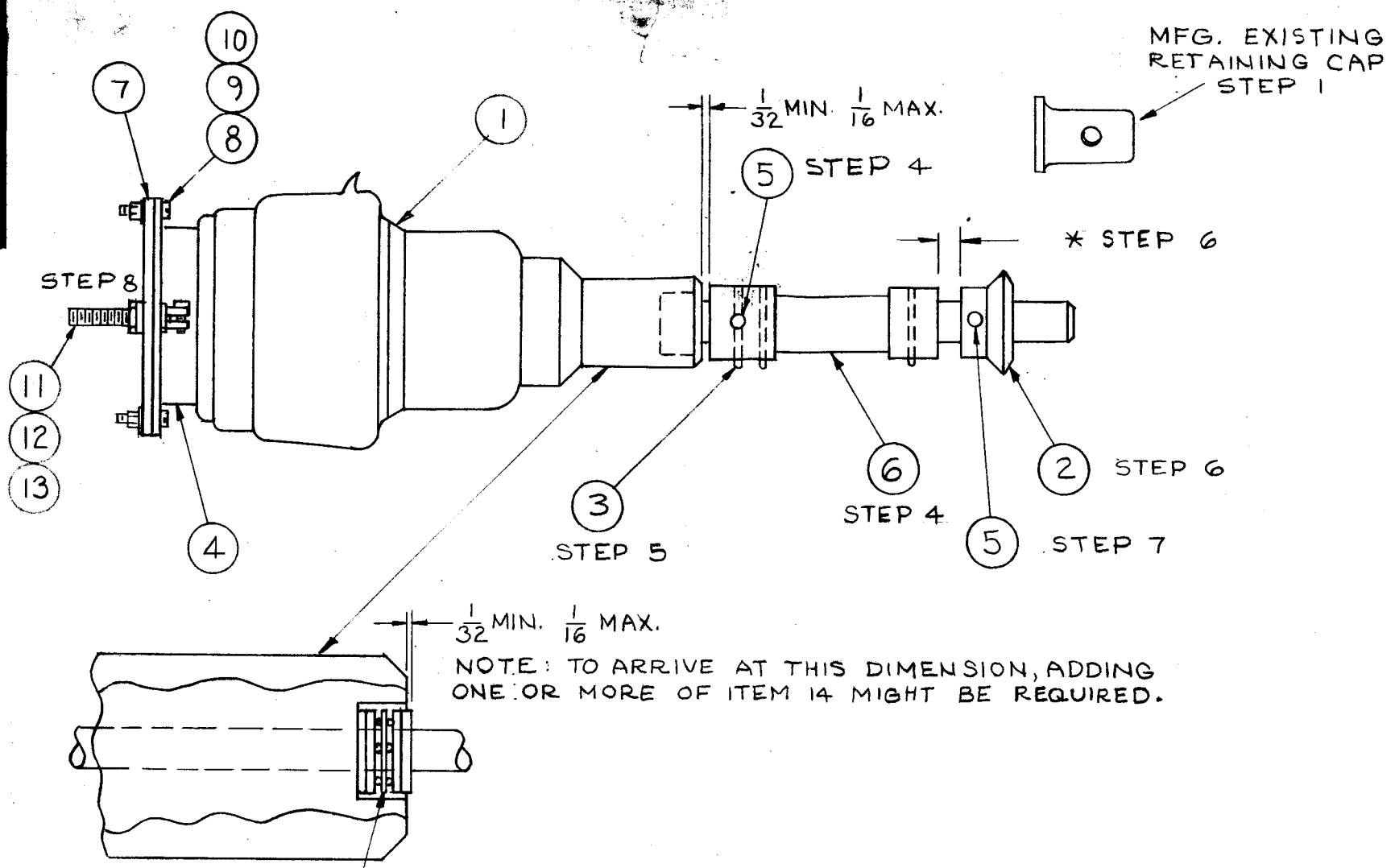


A-1947 C



BEARING WASHER IN MIDDLE, 2 FLATWASHERS ON EACH SIDE  
STEP 3

**PROCEDURE**

1. REMOVE & STOCK RETAINING CAP.
  2. ROTATE SHAFT CCW TO LIMIT.
  3. BE SURE WASHERS ARE PLACED ON SHAFT IN ORDER SHOWN.
  4. PLACE SHAFT ASS'Y ITEM 6, ON CAPACITOR SHAFT IN POSITION SHOWN, TIGHTEN SET SCREW, ITEM 5, (NOTE: SET SCREW MUST BE ON FLAT OF CAPACITOR SHAFT).
  5. DRILL THROUGH SHAFT ASS'Y PILOT HOLE WITH #52 DRILL, PIN THROUGH WITH ITEM 3.
  - \* 6. ASSEMBLE GEAR, ITEM 2, IN POSITION SHOWN
  7. TIGHTEN SET SCREWS, ITEM 5, ON GEAR.
  8. ASSEMBLE ITEMS 4,7,8,9,10,11,12,13
- \* THIS DIMENSION TO BE ESTABLISHED ON ASSEMBLY & INSTALLATION INTO UNIT.

	14	WA-133-5	WASHER, THRUST (IF REQUIRED)
1	13	NTH2520BN14	NUT, HEX.
1	12	LWS25MRN	LOCKWASHER, SPLIT
1	11	SCFP2520BN16	SCREW, MACHINE, FL. HD.
6	10	NTH0832BN10	NUT, HEX.
6	9	LWE08MRN	LOCKWASHER, EXT.
6	8	SCBP0832BN6	SCREW MACHINE
1	7	MS-2368	PLATE, TOP, CAP.
1	6	PM-524	SHAFT ASS'Y
3	5	SLHC0832SP4	SET SCREW
1	4	PO-185-6S	FLANGE, VAC. CAP (FIXED)
1	3	PN59-062-16	PIN, SPRING
1	2	GR-141-2	GEAR, BEVEL
1	1	CB-155	CAPACITOR, VAR. VAC. 50-2000

C		IT 5 WAS AN565DBH4 GENERAL UPDATING	9.27.66	16904	ltd			
B	2	ITEM 10 WAS NTH0832BN10	1-24-62	6257	G.S.			
A	1	ITEM 4 WAS PO-185-6	10-10-60	3155				
ISSUE	ITEM	CHANGED FROM	DATE	CH. NO.	DRAFTS	CHECKER	ENG. APP.	
TOLERANCES			SCALE:					
DEC. DIM. ±			MAXIMUM ALLOWABLE TOLERANCES HAVE BEEN DETERMINED AND ANY DEVIATIONS WILL BE CAUSE FOR REJECTION.					
FRAC. DIM. ±			REMOVE ALL BURRS AND SHARP EDGES					
ANGULAR DIM. ±								

1	GPT10K(2MC)			B-1960
REQ. PER UNIT	MODEL	PROJECT NO.	ASS'Y. NO.	DATE
USED ON				

REQ. ITEM	PART NO.	DESCRIPTION	SYMBOL
+ STOCK SIZE			
MATERIAL			
THE TECHNICAL MATERIEL CORP. MAMARONECK, NEW YORK			
AM-114 ASSEMBLY, CAPACITOR, VARIABLE, VACUUM, W/GEAR			
TYPE & TEMPER	HEAT TREAT. SPEC.	DRAWN	CHECKED
FINISH & SPEC. NO.		ELEC. DES. APP.	MECH. DES. APP.

A-1947 C