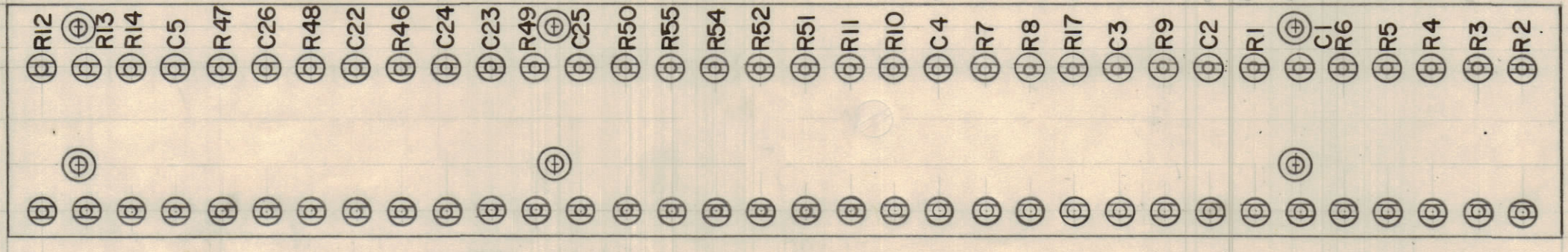
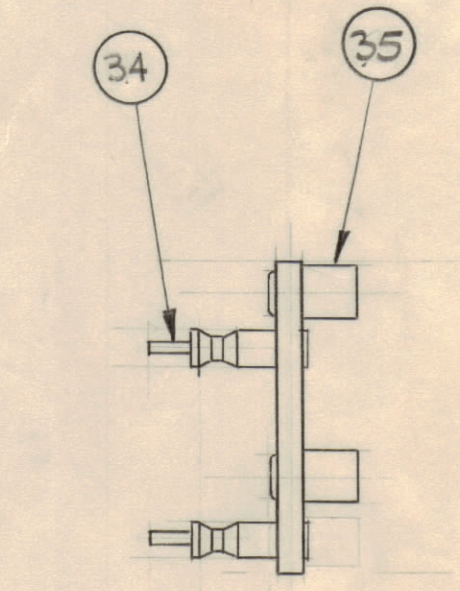


MACHINING (A-1938-1)  
MATERIAL .125 XXXP, PHENOLIC, FINISH NATURAL



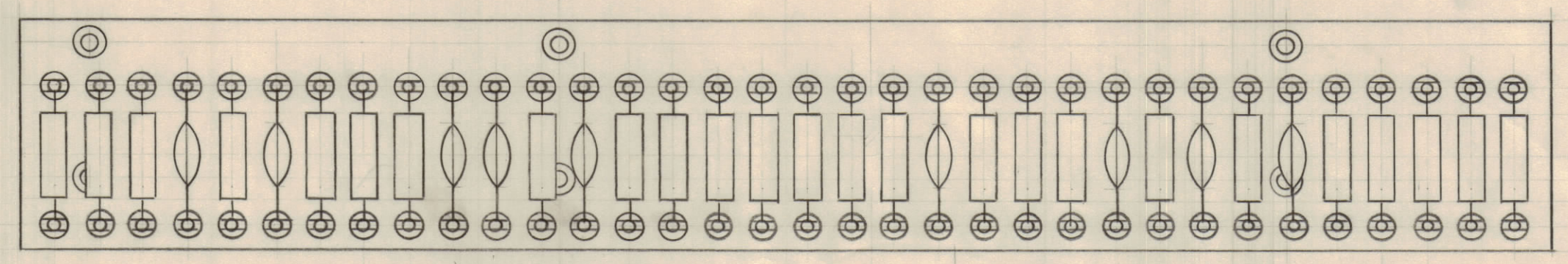
STAMPING TO BE 1/8 HIGH BLACK GOTHIC.

STAMPING (A-1938-2)

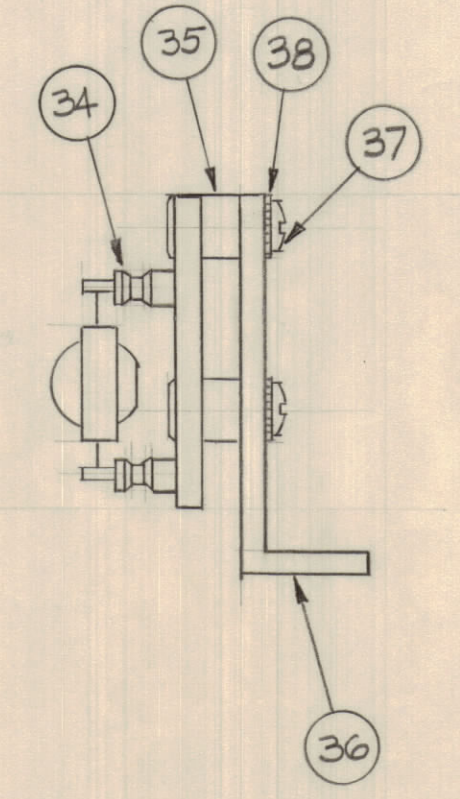
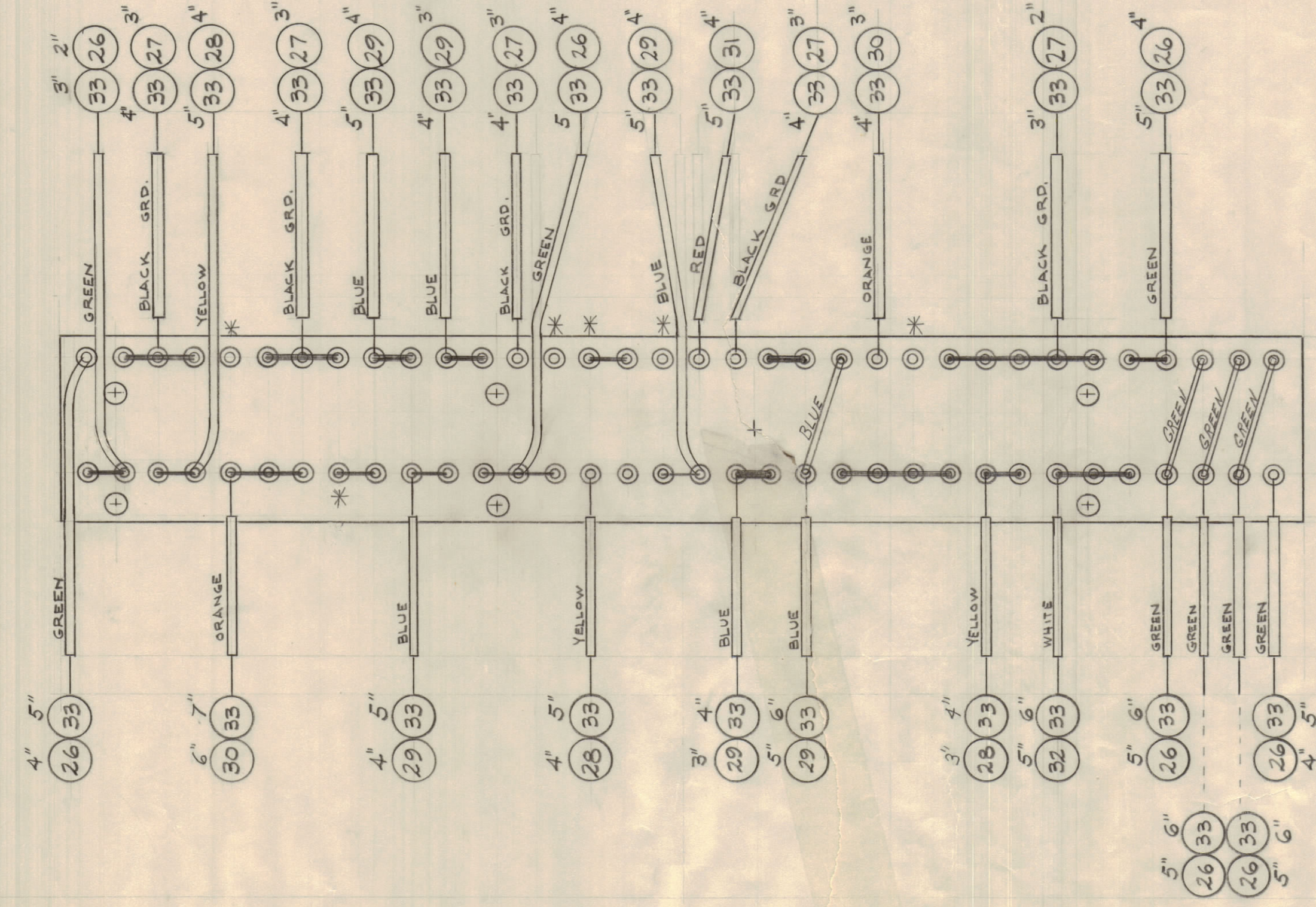


SUB-ASSY (A-1938-3)

TOP VIEW



REAR VIEW



\* DO NOT SOLDER THESE CONNECTIONS.

ELECTRICAL ASSEMBLY (A-1938-4)

REQ. ITEM	PART NO.	DESCRIPTION	SYMBOL
41			
40			
39			
6 38	LWEO6 MRC	LOCKWASHER, EXT.	
6 37	SCBS0632BC6	SCREW, MACHINE	
3 36	MS-1321	BRACKET, ANGLE, T.B.	
6 35	TE-108-8	STANDOFF, RIVET TYPE	
68 34	TE-108-3	TERMINAL, LUG	
X 33	WL-100-7	WIRE, BUSS	
X 32	PX-104 -7-.034	INSULATION, SLEEVING (20)	GREY
X 31	↑ 3		RED
X 30	↑ 8		ORANGE
X 29	↑ 6		BLUE
X 28	↑ 2		YELLOW
X 27	↓ 1		BLACK
X 26	PX-104 -4-.034	INSULATION, SLEEVING	GREEN
1 25	RC20GF 273K	RESISTOR, FIXED COMP.	R12
1 24	↑ 473K		R13
1 23	↑ 184K		R47
1 22	RC20GF 124K	RESISTOR, FIXED COMP.	R48
1 21	CP-106CA74-2	CAPACITOR PAPER	C22
2 20	CC-100-3	CAPACITOR, DISC.	C23, C24
2 19	RC20GF 155K	RESISTOR, FIXED COMP.	R46, 49
1 18	RC20GF 105K		R50
1 17	RC42GF 223K		R55
1 16	RC20GF 274K		R54
1 15	↑ 333K		R52
1 14	↑ 472K		R51
1 13	↑ 224K		R11
1 12	↑ 104K		R10
1 11	↓ 103K		R7
1 10	RC20GF 101K	RESISTOR, FIXED COMP.	R8
3 9	CC-100-16	CAPACITOR, DISC.	C3, 4, 25
2 8	RC20GF151K	RESISTOR, FIXED	R9, 14
1 7	RC20GF474K	RESISTOR, FIXED	R1
4 6	CC-100-28	CAPACITOR, DISC.	C1, 2, 8, 26
1 5	RC20GF 102K	RESISTOR, FIXED COMP.	R6
1 4	↑ 222K		R5
2 3	↑ 682K		R4, 17
1 2	↓ 223K		R3
1 1	RC20GF 683K	RESISTOR, FIXED COMP.	R2

.125		THE TECHNICAL MATERIEL CORP.	
STOCK SIZE		MAMARONECK, NEW YORK	
PHENOLIC		TERMINAL BOARD NO.1 ASSEMBLY	
MATERIAL			
XXXP			
TYPE & TEMPER		102140	P.A.
		DRAWN	ELEC. DES. APP. MECH. DES. APP.
1 AFC-1		7-28-60	
HEAT TREAT. SPEC.		CHECKED	FINAL APPROVAL
NATURAL		A-1938	
FINISH & SPEC. NO.		A	

ISSUE ZONE	DESCRIPTION	DATE	CH. NO.	DRAFTS	CHECKER	ENG. APP.
A C2	ITEM 21 WAS CP-108-2	8-30-60	2892	CU	APB	

TOLERANCES: DEC. DIM. ±, FRAC. DIM. ±, ANGULAR DIM. ±

SCALE: MAXIMUM ALLOWABLE TOLERANCES HAVE BEEN DETERMINED AND ANY DEVIATIONS WILL BE CAUSE FOR REJECTION. REMOVE ALL BURRS AND SHARP EDGES.

REQ. PER UNIT	MODEL	SECTION	ASSY. NO.	DATE