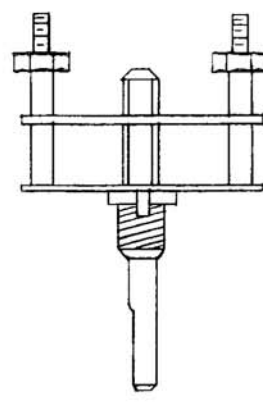
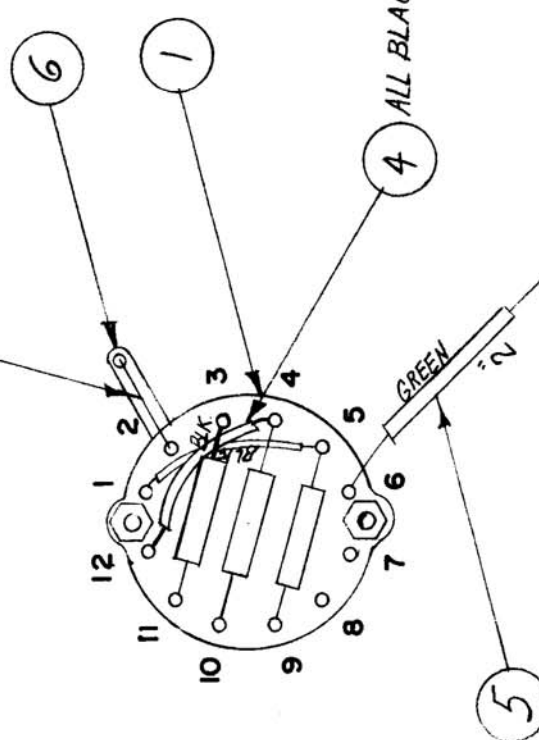


USED ON
 REQ. PART UNIT
 1
 MODEL
 DYM-2
 DYM-4
 ASSY. NO.
 DATE
 7-26-60
 2-8-62
 A-1936
 A

3 ALL BUSS WIRE THE SAME.



1	6	TE-111-2	LUG, SOLDER		
2	5	PX-104-4-.034	SLEEVING, INSULATED	GRN.	
4	4	PX-104-1-.034	SLEEVING, INSULATED	BLK.	
3	3	WL-100-7	WIRE, BUSS-BAR		
3	2	RC206F821K	RESISTOR, FIXED COMPOSITION	R172 R173, 174	
1	1	SW-275	SWITCH, ROTARY		

REQ. ITEM	PART NO.	DESCRIPTION	SYMBOL
THE TECHNICAL MATERIAL CORP. MAMARONECK, NEW YORK			
SWITCH, ASSEMBLY			
S-101			
TYPE & TEMPER	HEAT TREAT. SPEC.	DRAWN	CHECKED
MATERIAL		FILE	FILE
FINISH & SPEC. NO.		FINAL APPROVAL	
		A-1936	
		A	

ISSUE ITEM	CHANGED FROM	DATE	CH. NO.	DRAFTS	CHECKER	ENG. APP.
A 1	ITEMS 4 & 5 WERE PX-100	11-1-60	3333	RA	RA	RA
TOLERANCES						
SCALE:						
MAXIMUM ALLOWABLE TOLERANCES HAVE BEEN DETERMINED AND ANY DEVIATIONS WILL BE CAUSE FOR REJECTION. REMOVE ALL BURRS AND SHARP EDGES						
DEC. DIM. ±						
FRAC. DIM. ±						
ANGULAR DIM. ±						