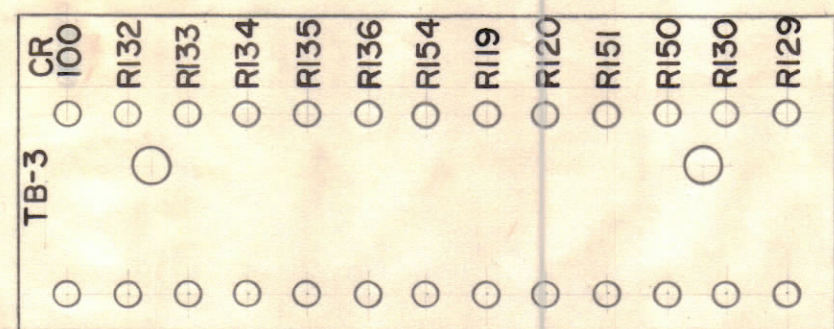
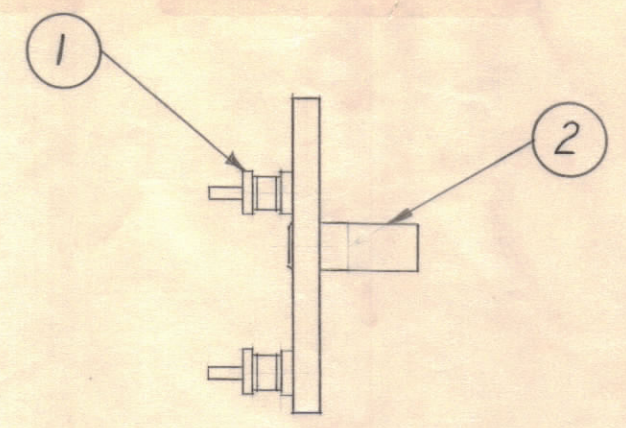


STAGE 1 - MACHINING (A-1933-1)
MATERIAL 1/8" XXXP, PHENOLIC, FINISH-NATURAL.

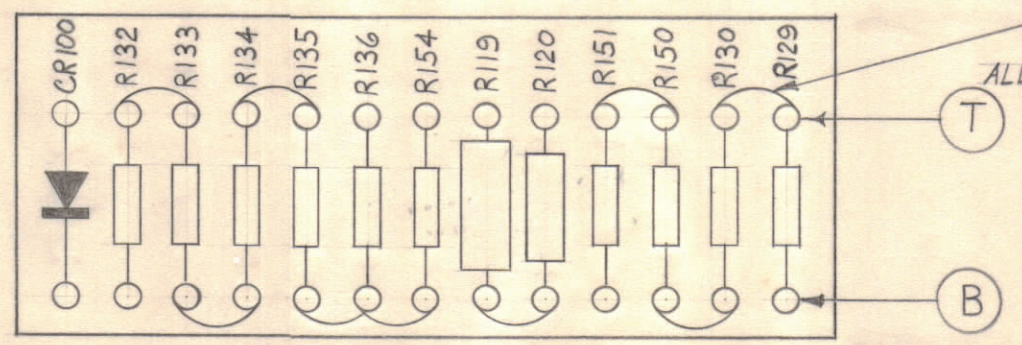
MARKING PROCESS: AS PER IMC SPECIFICATION S-727
STAMPING TO BE 1/8 HIGH BLACK GOTHIC.



STAGE 2 - STAMPING (A-1933-2).

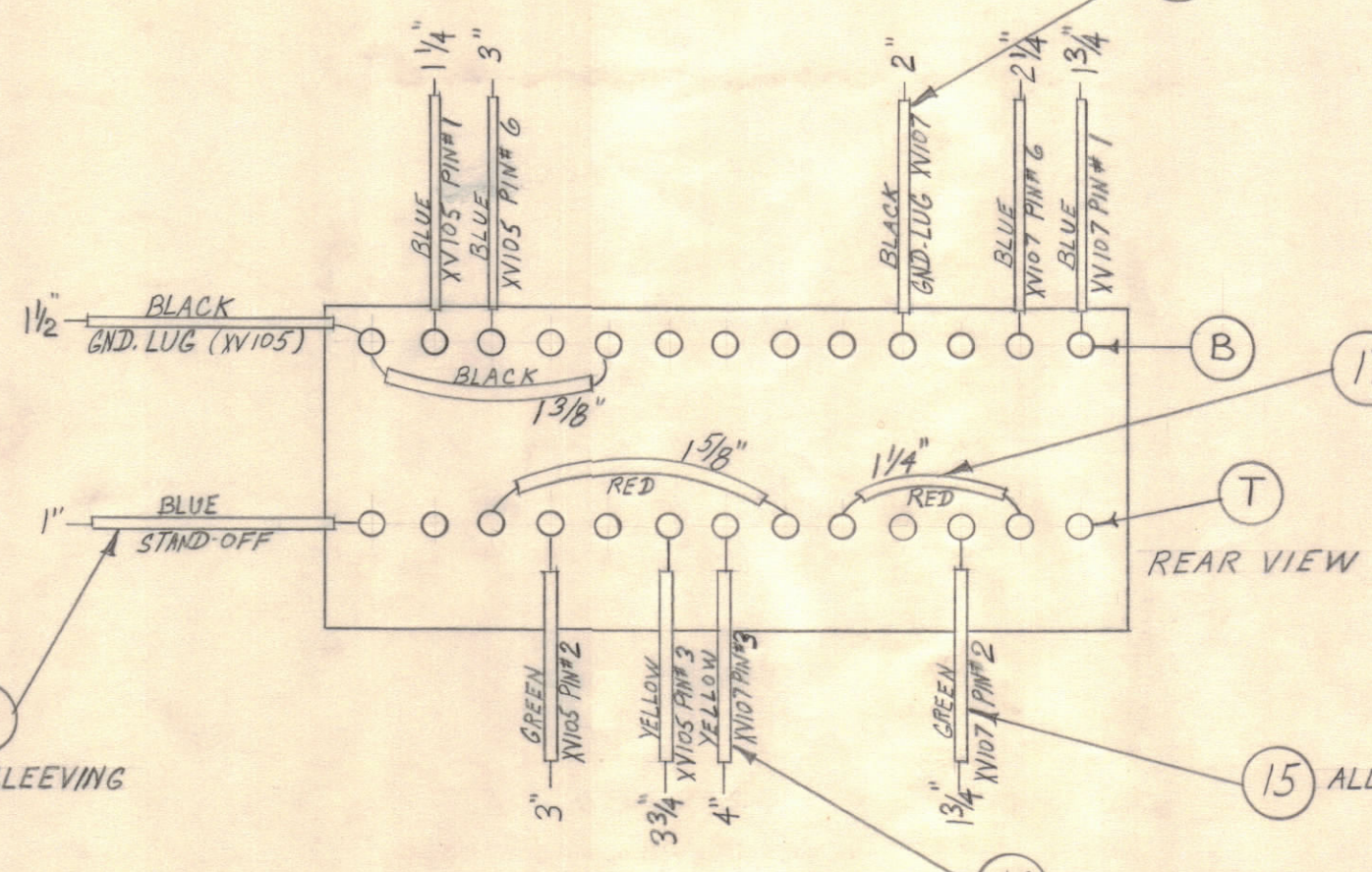


STAGE 3 - SUB-ASSEMBLY (A-1933-3)



TOP VIEW

ALL BUSS WIRE THE SAME.



REAR VIEW

NOTE: SYMBOLS T & B REFER TO STAGE SHEETS ONLY.

14 ALL BLUE SLEEVING

16 ALL YELLOW SLEEVING

15 ALL GREEN SLEEVING.

17 ALL RED SLEEVING.

STAGE 4 - ELECTRICAL ASSEMBLY (A-1933-4)

17	PX-104-3-.034	SLEEVING, INSULATED	RED
16	PX-104-2-.034		YELLOW
15	PX-104-4-.034		GREEN
14	PX-104-6-.034		BLUE
13	PX-104-1-.034	SLEEVING, INSULATED	BLACK
12	WL-100-7	WIRE, BUSS	
1	11 RC426F102K	RESISTOR, FIXED, COMPOSITION	R119
1	10 RC30GF472K		R120
1	9 RC20GF821K		R154
1	8 RC20GF333K		R151
1	7 RC20GF122K		R136
1	6 RC20GF273K		R135
2	5 RC20GF125K		R134, 150
4	4 RC20GF104K	RESISTOR, FIXED COMPOSITION	R129, 130, 132, 133
1	3 IN-39-B	CRYSTAL DIODE (GERMANIUM)	CR100
2	2 TE-108-22	STANDOFF, RIVET TYPE	
26	1 TE-109-3	TERMINAL, LUG	

B	B2	ITEM 2 WAS TE-108-13	8-13-62	7010	GS	HO	16
A	CD2	LEAD DESTINATIONS ADDED					
	C7	ITEMS 18 thru 17 WERE PL100-16-5-42.022	10-26-60	3287			
	C7	SYMBOL LENGTH ADDED					
	C7	LEAD LENGTH NOTE DELETED					
ISSUE	ZONE	DESCRIPTION	DATE	CH. NO.	DRAFTS	CHECKER	ENG. APP.
TOLERANCES			SCALE:				
DEC. DIM. ±			MAXIMUM ALLOWABLE TOLERANCES HAVE BEEN DETERMINED AND ANY DEVIATIONS WILL BE CAUSE FOR REJECTION. REMOVE ALL BURRS AND SHARP EDGES				
FRAC. DIM. ±							
ANGULAR DIM. ±							

1	DVM-4			2-1-62
1	DVM-2			7-22-60
REQ PER UNIT	MODEL	SECTION	ASS'Y. NO.	DATE

1/8	THE TECHNICAL MATERIEL CORP. MAMARONECK, NEW YORK		
PHENOLIC	TERMINAL BOARD #3 ASSEMBLY		
XXXXP			
TYPE & TEMPER	DRAWN	ELEC. DES. APP.	MECH. DES. APP.
HEAT TREAT. SPEC.	CHECKED	FINAL APPROVAL	
NATURAL	A-1933 B		
FINISH & SPEC. NO.			