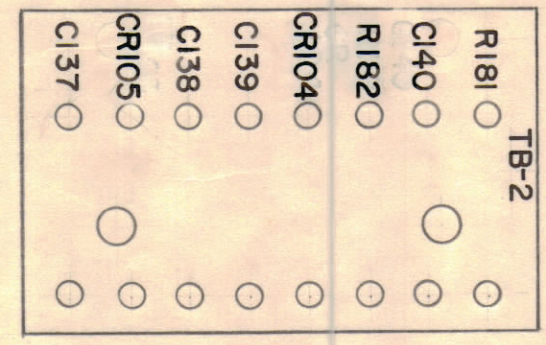
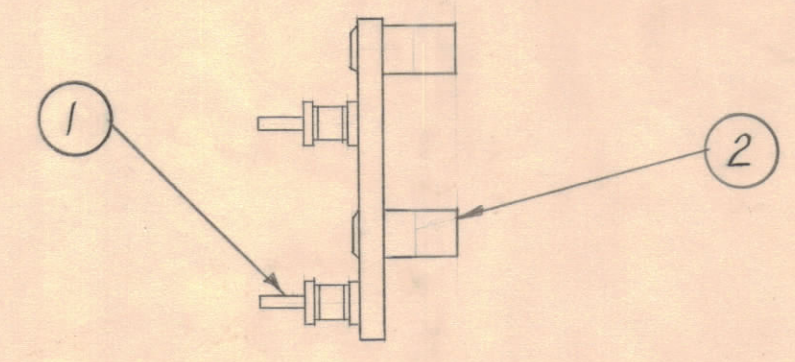


STAGE 1 - MACHINING (A-1932-1)  
 MATERIAL:  $\frac{1}{8}$ , XXXP, PHENOLIC, FINISH - NATURAL.

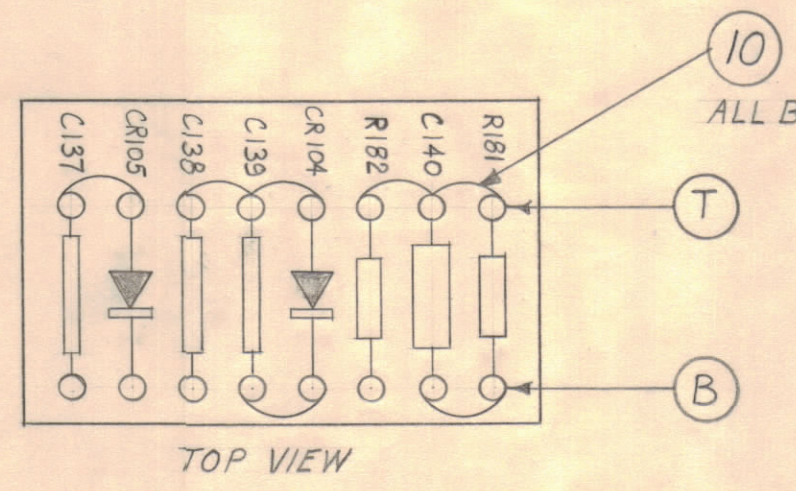
MARKING PROCESS: AS PER I M C SPECIFICATION S-727  
 STAMPING TO BE 1/8 HIGH BLACK GOTHIC.



STAGE 2 - STAMPING (A-1932-2)



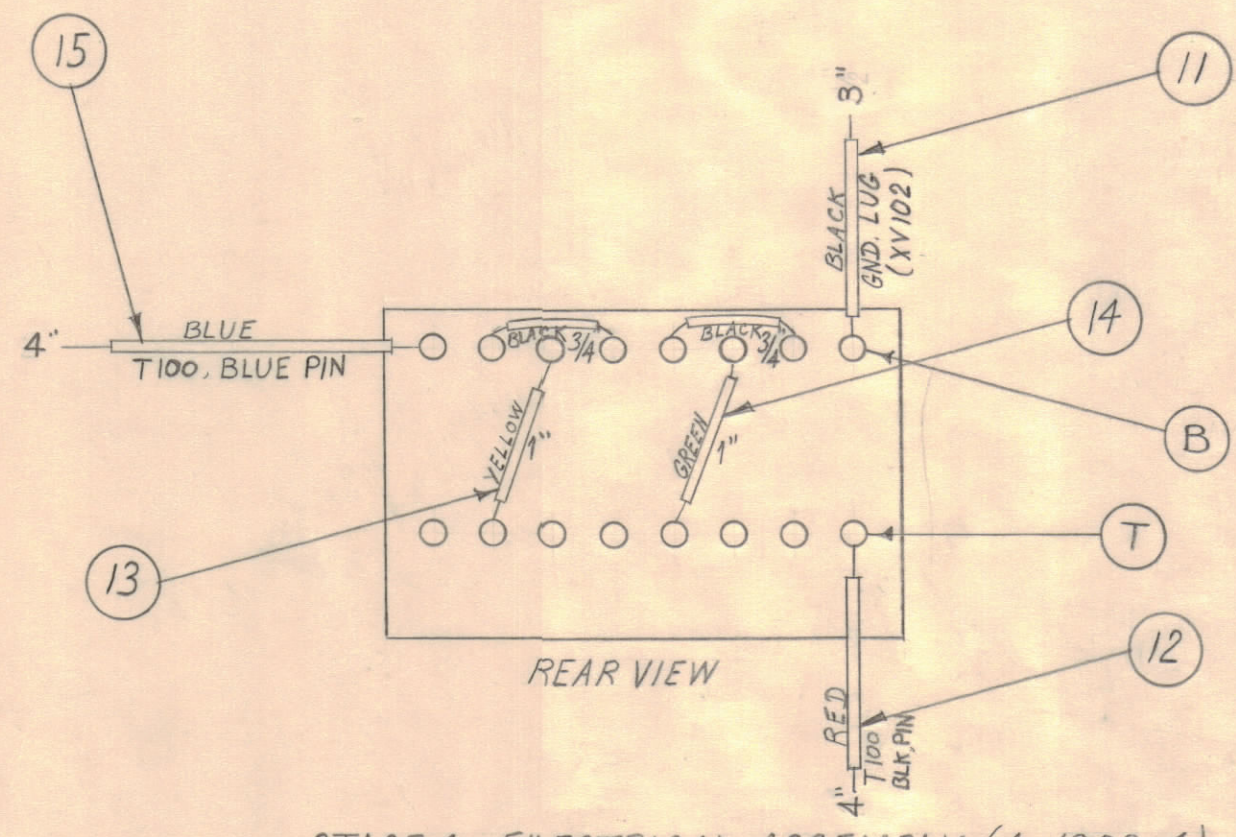
STAGE 3 - SUB-ASSEMBLY (A-1932-3)



ALL BUSS WIRE THE SAME

NOTE: SYMBOLS T & B REFER TO STAGE SHEETS ONLY.

TOP VIEW



ALL BLACK SLEEVING.

STAGE 4 - ELECTRICAL ASSEMBLY (A-1932-4)

REQ. ITEM	PART NO.	DESCRIPTION	SYMBOL
15	PX-104-6-.034	SLEEVING, INSULATED	BLUE
14	PX-104-4-.034		GREEN
13	PX-104-2-.034		YELLOW
12	PX-104-3-.034		RED
11	PX-104-1-.034	SLEEVING, INSULATED	BLACK
10	WI-100-7	WIRE, BUSS-BAR TINNED	
1 9	IN-39-B	CRYSTAL DIODE, GERMANIUM	CR105
1 8	IN-482-A	CRYSTAL DIODE, SILICON	CR104
1 7	CM15C151K	CAPACITOR, FIXED, MICA	C138
2 6	CM15C470K	CAPACITOR, FIXED, MICA	C137, 139
1 5	CN108C4702K	CAPACITOR, FIXED, "MYLAR"	C140
1 4	RC20GF273K	RESISTOR, FIXED COMPOSITION	R182
1 3	RC20GF475K	RESISTOR, FIXED COMPOSITION	R181
2 2	TE-108-13	STANDOFF, RIVET TYPE	
16 1	TE-109-3	TERMINAL, LUG	

ISSUE ZONE	DESCRIPTION	DATE	CH. NO.	DRAFTS	CHECKER	ENG. APP.
D	B2 ITEM 2 WAS TE-108-3	8-13-62	7010	5.7	Jde	16
D	D5 WIRE LENGTHS CLARIFIED					
C	C145 LEAD DESTINATIONS LOCATED					
C	E4 SYMBOL NOTE ADDED					
C	C122 ITEMS 11 THRU 15 WERE PX-100-1-24-56-.022	10-26-60	3287	MS	Jde	JH
C	C4 LEAD LENGTH NOTE DELETED					
B	H4 R182 WAS R118 (STAMPING)	9-29-60	3116	CY	Jde	JH
A	B1 ITEM 4 (Symbol was R118)	7-26-60	2646	CY	Jde	JH

REQ PER UNIT	MODEL	SECTION	ASSY. NO.	DATE
1	DVM-4			2-8-62
1	DVM-2	AVC	TB-2	7-22-60

THE TECHNICAL MATERIEL CORP. MAMARONECK, NEW YORK	
TERMINAL BOARD #2 ASSEMBLY	
MATERIAL	
XXXP	
TYPE & TEMPER	
HEAT TREAT. SPEC.	
FINISH & SPEC. NO.	
NATURAL	