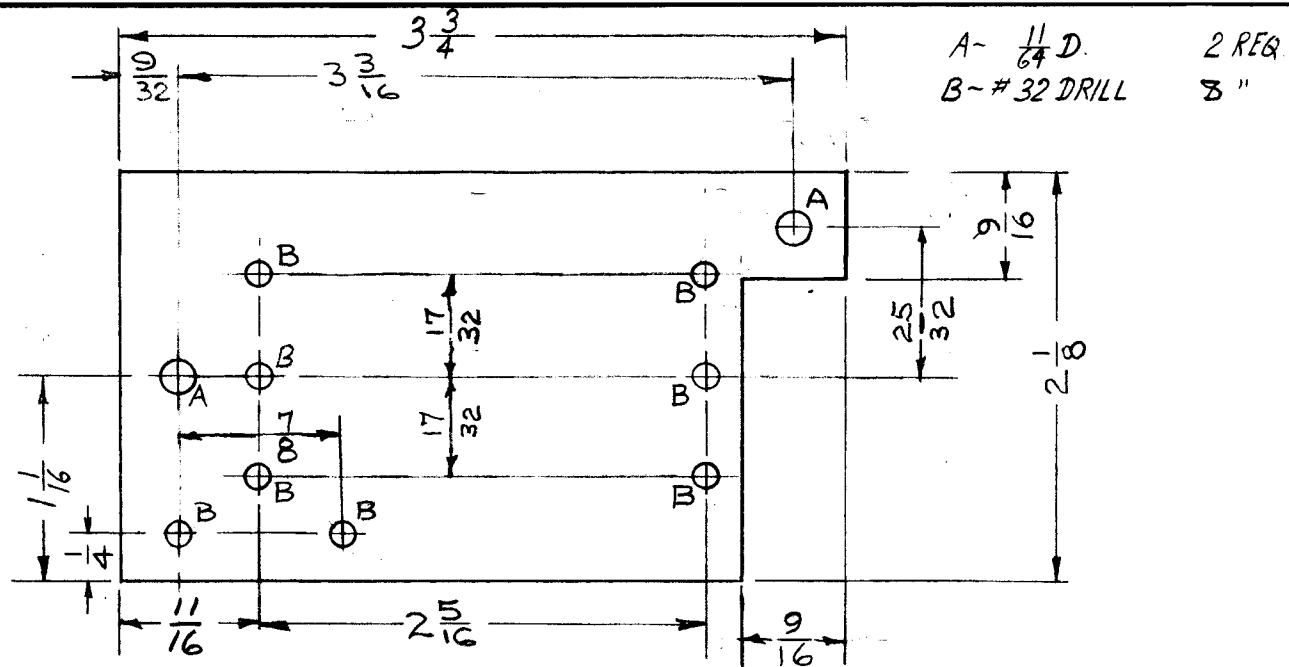
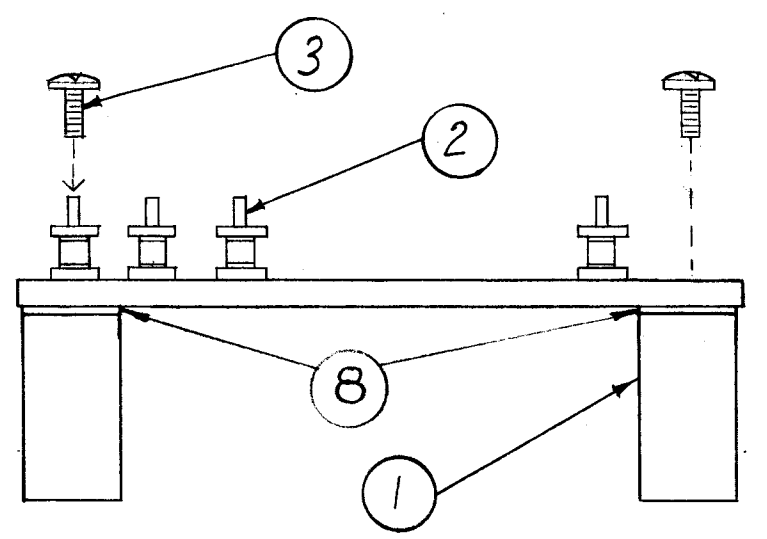


C  
A-1931

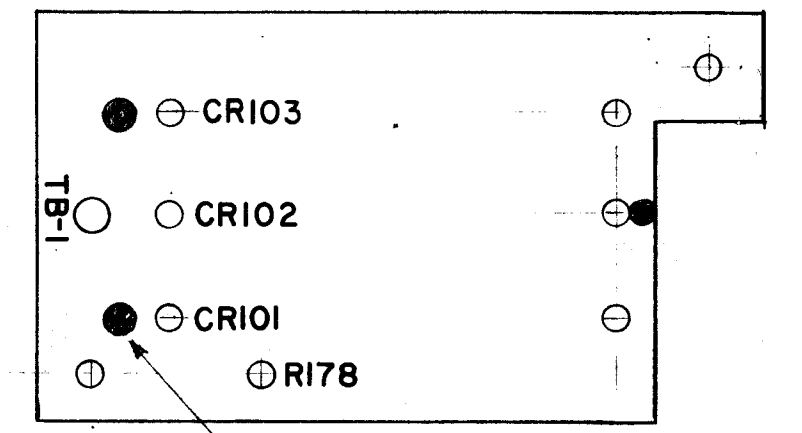


STAGE 1 - MACHINING (A-1931-1)  
MATERIAL - 1/8" THICK, XXXP, PHENOLIC, FINISH - NATURAL

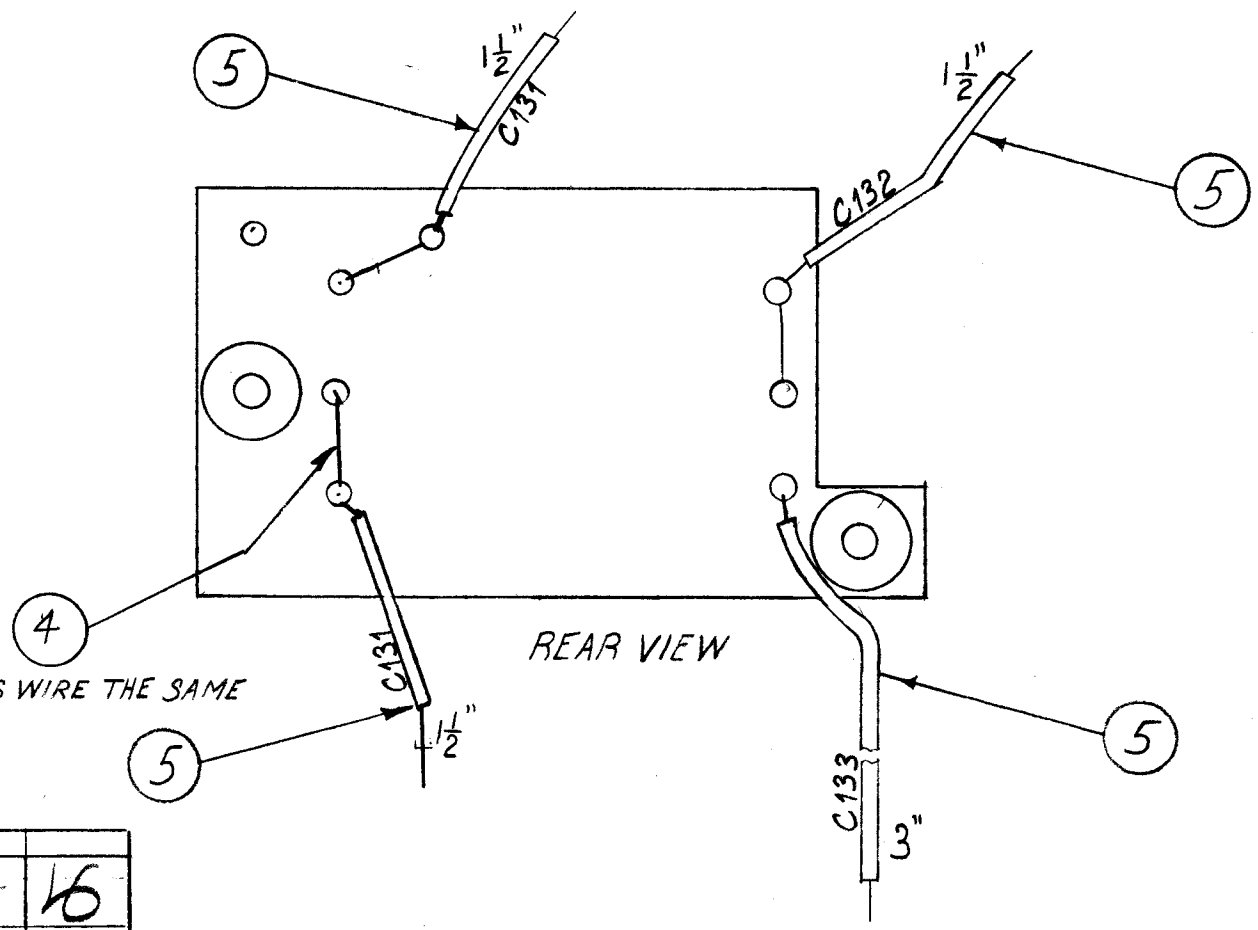


STAGE 2 - SUB-ASSEMBLY (A-1931-2)

MARKING PROCESS: AS PER TMC SPECIFICATION S-727  
STAMPING TO BE 1/8" HIGH BLACK GOTHIC.



STAGE 3 - STAMPING (A-1931-3)  
DENOTES 1/8 DIA RED DOTS (DOTS INDICATE POLARITY)



ALL BUSS WIRE THE SAME

STAGE 4 - ELECTRICAL ASSEMBLY (A-1931-4)

REQ. ITEM	PART NO.	DESCRIPTION	SYMBOL
2	8	WA-109-46	WASHER, FIBER
3	7	RX-107-2	RECTIFIER, SELENIUM
1	6	RC20GF100K	RESISTOR, FIXED COMPOSITION
	5	PX-104-9-.034	INSULATION, SLEEVING
	4	WL-100-7	WIRE, BUSS
2	3	SCBP0832BN4	SCREW, MACHINE
8	2	TE-109-3	TERMINAL, LUG
2	1	NS3W-0208	INSULATOR, PILLAR, ROUND

ISSUE	ITEM	CHANGED FROM	DATE	CH. NO.	DRAFTS	CHECKER	ENG. APP.
C	3	ITEM (8) ADDED					
	2	ITEM (1) WAS NS3W-0208	2-8-63	8170			
	1	ITEM (3) WAS SCBP0832BN4					
B	2	LEAD DESIGNATIONS ADDED	10-26-60	3286			
	1	ON STAGE 4, 3" DIM WAS 4"					
A		REDWG. & REVISED	9-29-60	3116			

TOLERANCES		SCALE:	
DEC. DIM. ±		1	DVM-4
FRAC. DIM. ±		1	DVM-2
ANGULAR DIM. ±			

MAXIMUM ALLOWABLE TOLERANCES HAVE BEEN DETERMINED AND ANY DEVIATIONS WILL BE CAUSE FOR REJECTION. REMOVE ALL BURRS AND SHARP EDGES

REQ. PER UNIT	MODEL	PROJECT NO.	ASS'Y. NO.	DATE
1	DVM-4			2-8-62
	DVM-2			7-20-60

THE TECHNICAL MATERIEL CORP.	MAMARONECK, NEW YORK
TERMINAL BOARD #1 ASSEMBLY (HIGH VOLTAGE)	
XXXP	
NATURAL	
TYPE & TEMPER	HEAT TREAT. SPEC.
FINISH & SPEC. NO.	
DRAWN	CHECKED
ELEC. DES. APP.	MECH. DES. APP.
	A-1931