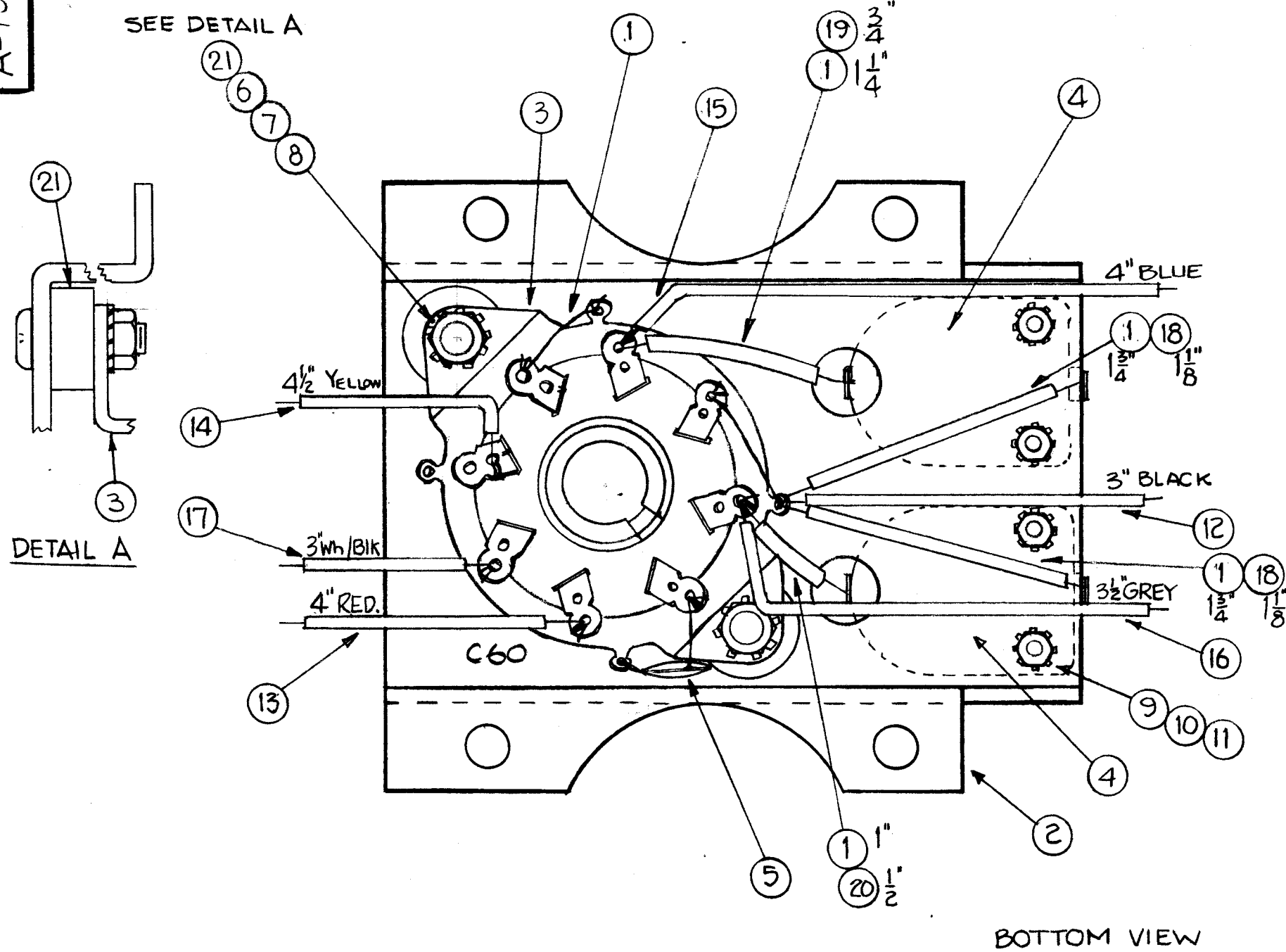


A-1930

A



BOTTOM VIEW

2	21	TE-117-25	SPACER	
1/2"	20	PX-104-7-.034	INSULATION SLEEVING	GREY
3/4"	19	PX-104-6-.034	"	BLUE
2 1/4"	18	PX-104-1-.034	INSULATION SLEEVING	BLK.
3"	17	MWC22(7)U90	WIRE, INSULATED	Wh-BLK
3 1/2"	16		8	Grey
4"	15		6	Blue
4 1/2"	14		4	Yellow
4"	13		2	Red
3"	12	MWC22(7)U0	WIRE, INSULATED	Black
4	11	NTH0440BNG	NUT, HEX	
4	10	LWE04MRN	LOCKWASHER, EXT.	
4	9	SCB 0440BNG	SCREW, MACHINE	
2	8	NTH0632BNG	NUT, HEX	
2	7	LWE06MRN	LOCKWASHER, EXT.	
2	6	SCBP0632BNG	SCREW, MACHINE	
1	5	CC-100-16	CAPACITOR, DISK	C60
2	4	CVIIC300	CAPACITOR, VARIABLE	C58 C59
1	3	TS101P01	SOCKET, OCTAL	
1	2	MS-2312	OVEN SUB-CHASSIS (LETTERING LD-756)	
7"	1	WL-100-7	WIRE, BUSS-BAR, TINNED	

3	ITEM(6) WAS SCB50632BNG						
2	HDWR UPDATED & STANDARDIZED	G20-63	9311				
1	ADDED ITEM(21) & DETAIL						
ISSUE	ITEM	CHANGED FROM	DATE	CH. NO.	DRAFTS	CHECKER	ENG. APP.
TOLERANCES		SCALE:					
DEC. DIM. ±		MAXIMUM ALLOWABLE TOLERANCES HAVE BEEN DETERMINED AND ANY DEVIATIONS WILL BE CAUSE FOR REJECTION.					
FRAC. DIM. ±		REMOVE ALL BURRS AND SHARP EDGES					
ANGULAR DIM. ±							

1	MSR-5			6-30-60
REQ. PER UNIT	MODEL	PROJECT NO.	ASSY. NO.	DATE
USED ON				

REQ. ITEM	PART NO.	DESCRIPTION	SYMBOL
THE TECHNICAL MATERIEL CORP. MAMARONECK, NEW YORK			
OVEN, SUB-CHASSIS ASSY. (1ST OSC. CRYSTAL CONTROL)			
MATERIAL		D.J. [Signature] J. De [Signature]	V. ANGER
TYPE & TEMPER	HEAT TREAT. SPEC.	DRAWN	CHECKED
FINISH & SPEC. NO.		FINAL APPROVAL	
		A-1930	
		A	