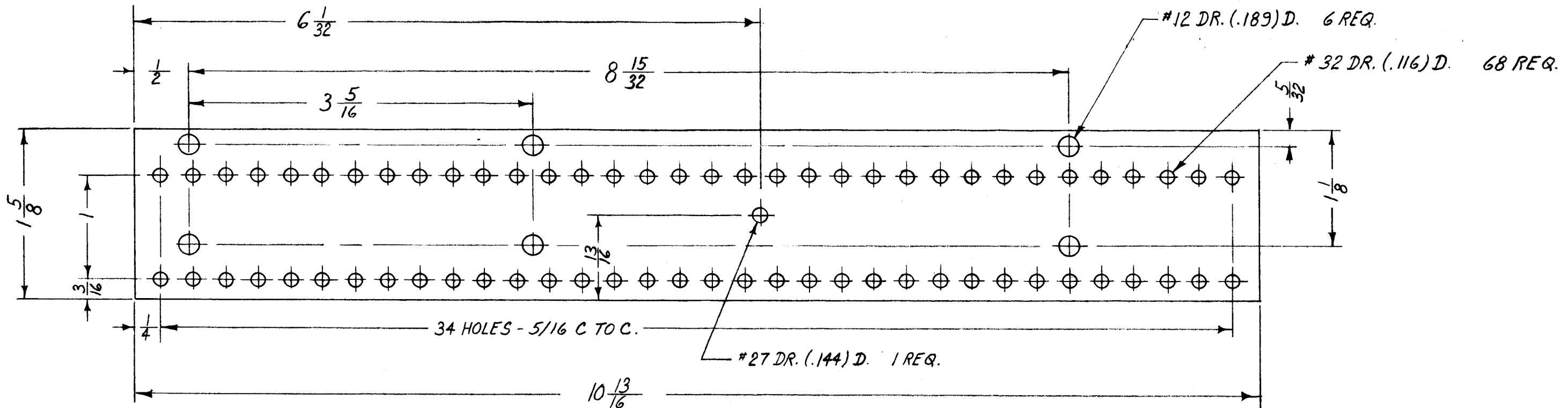
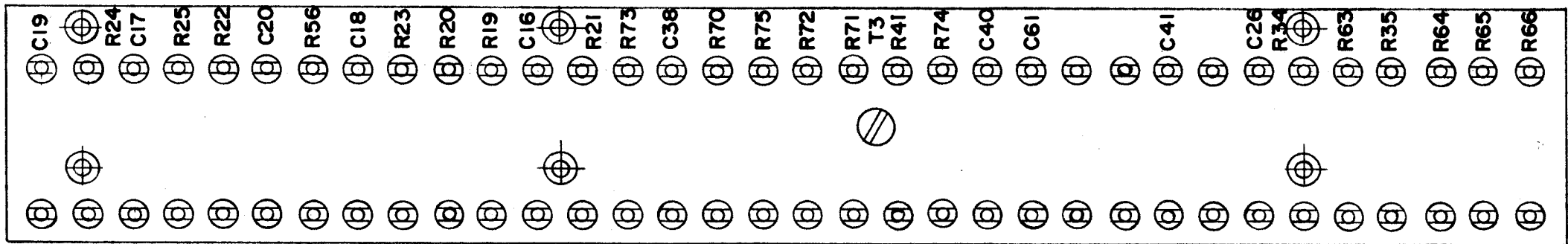


A-1920



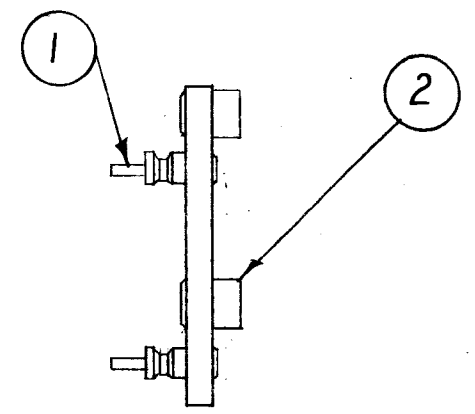
MACHINING MAT:
A-1920-1 1/8 NATURAL PHENOLIC XXXP.



MARKING PROCESS: AS PER TMC SPECIFICATION S-727.

STAMPING TO BE 1/8 HIGH BLACK GOTHIC.

STAMPING A-1920-2



SUB-ASSY A-1920-3

ISSUE ITEM	CHANGED FROM	DATE	CH. NO.	DRAFTS	CHECKER	ENG. APP.
TOLERANCES						
SCALE: FULL						
DEC. DIM. ±						
FRAC. DIM. ± 1/64						
ANGULAR DIM. ±						
MAXIMUM ALLOWABLE TOLERANCES HAVE BEEN DETERMINED AND ANY DEVIATIONS WILL BE CAUSE FOR REJECTION. REMOVE ALL BURRS AND SHARP EDGES						

1	MSR-5	A-1921	6-22-60
REQ. PER UNIT	MODEL	PROJECT NO.	ASS'Y. NO.
USED ON			

6	2	TE-108-8	STANDOFF, RIVET TYPE	
68	1	TE-109-3	TERMINAL, LUG	
REQ. ITEM	PART NO.		DESCRIPTION	SYMBOL
1/8			THE TECHNICAL MATERIEL CORP. MAMARONECK, NEW YORK	TERMINAL BOARD NO. 1 MECH ASSEMBLY
PHENOLIC				
MATERIAL			XXXP	DRAWN [Signature] CHECKED [Signature] FINAL APPROVAL J. ANGER
NATURAL				
FINISH & SPEC. NO.			ELEC. DES. APP.	MECH. DES. APP.
			A-1920	