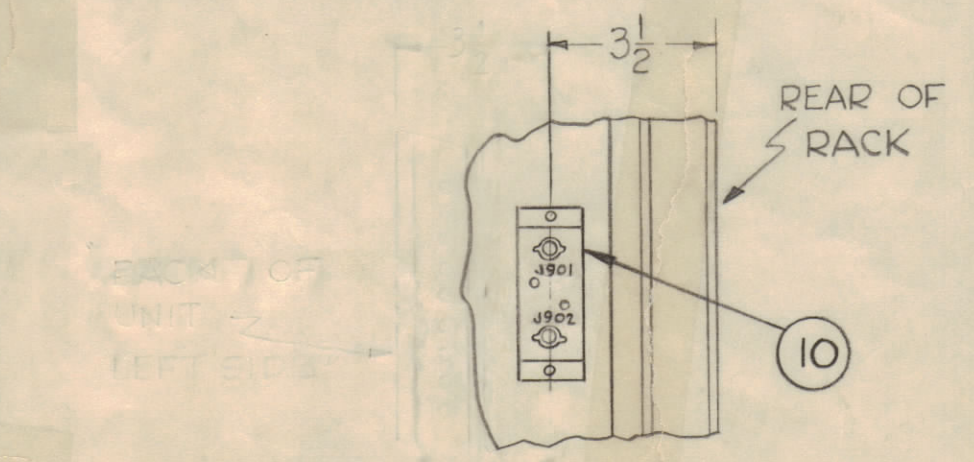
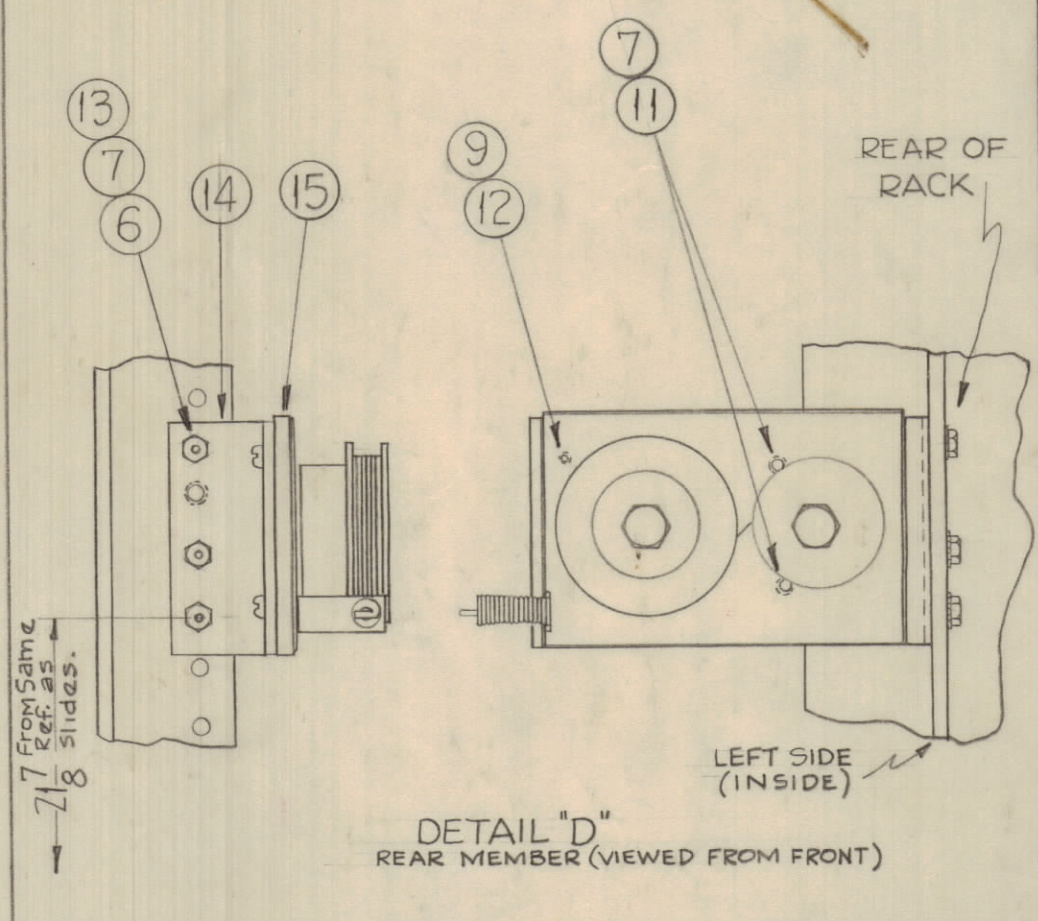
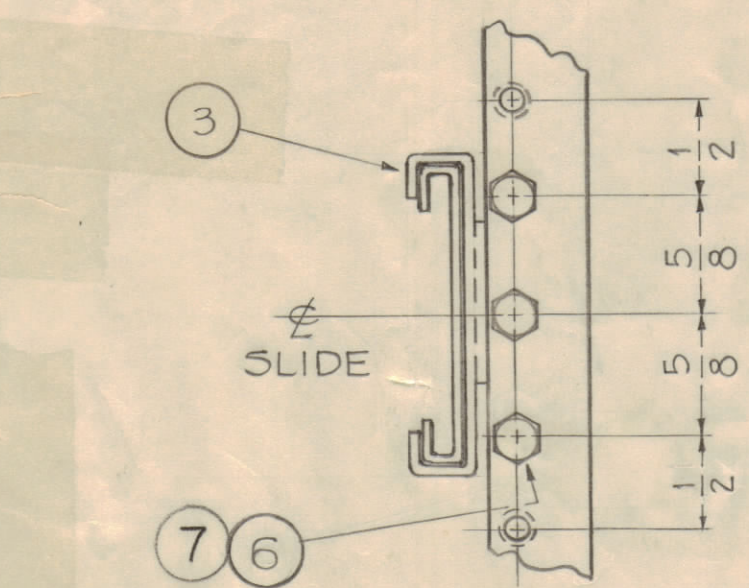
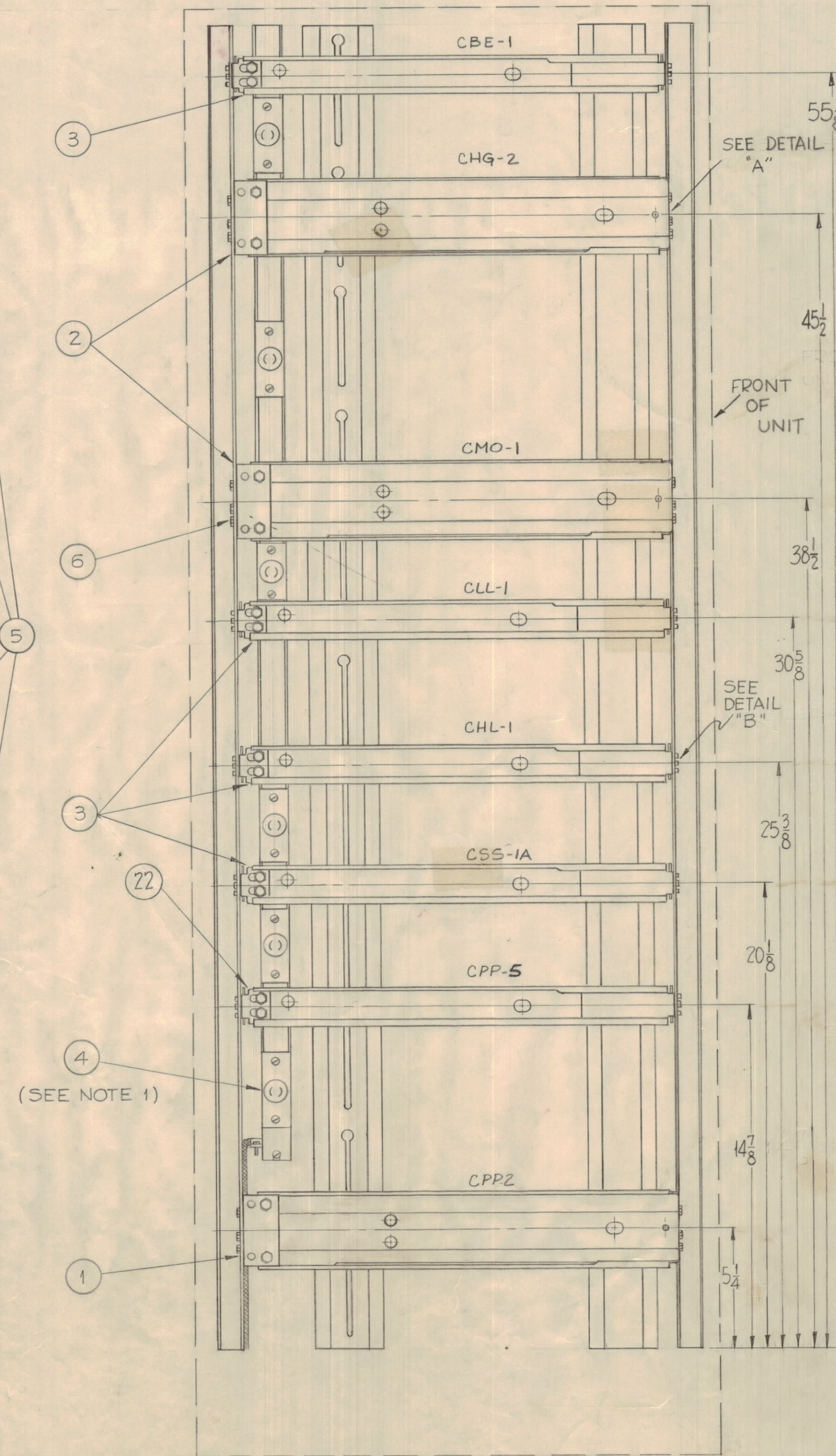
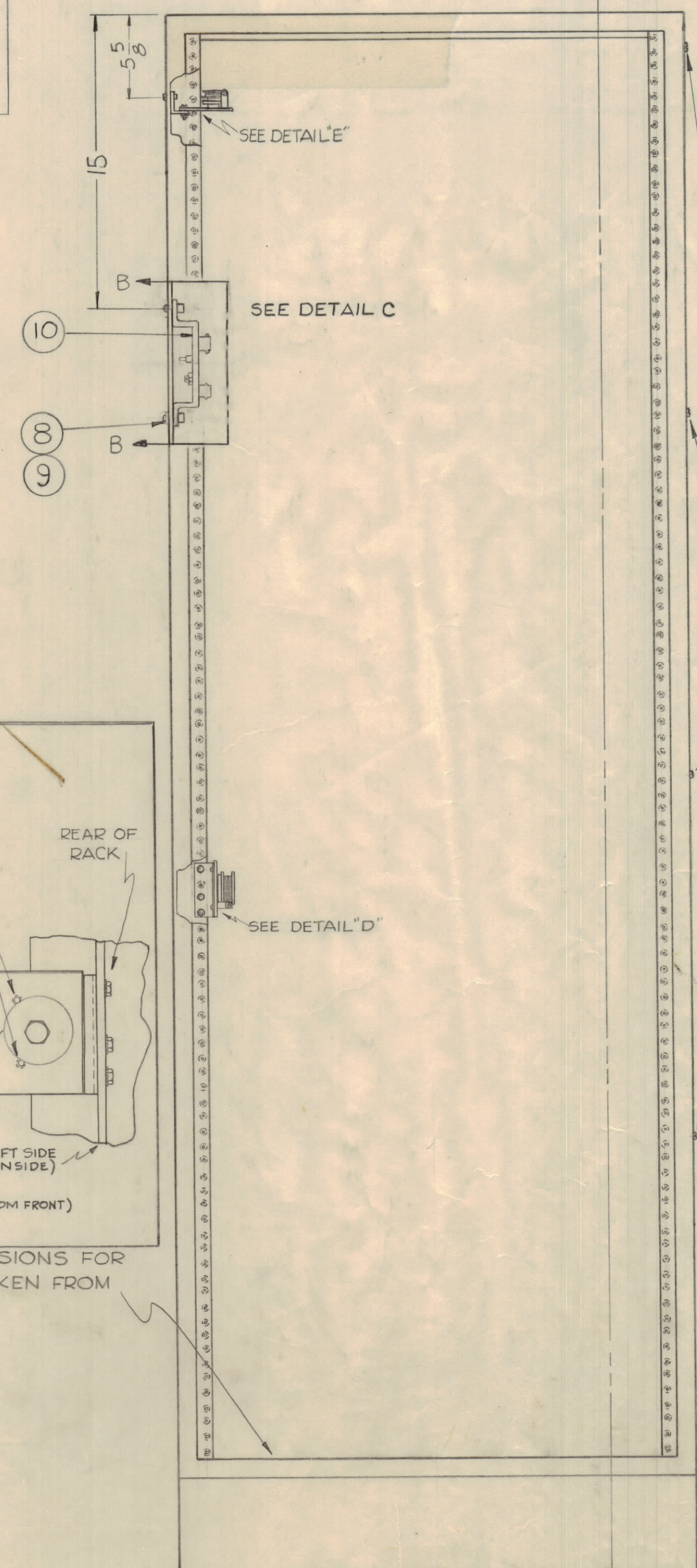
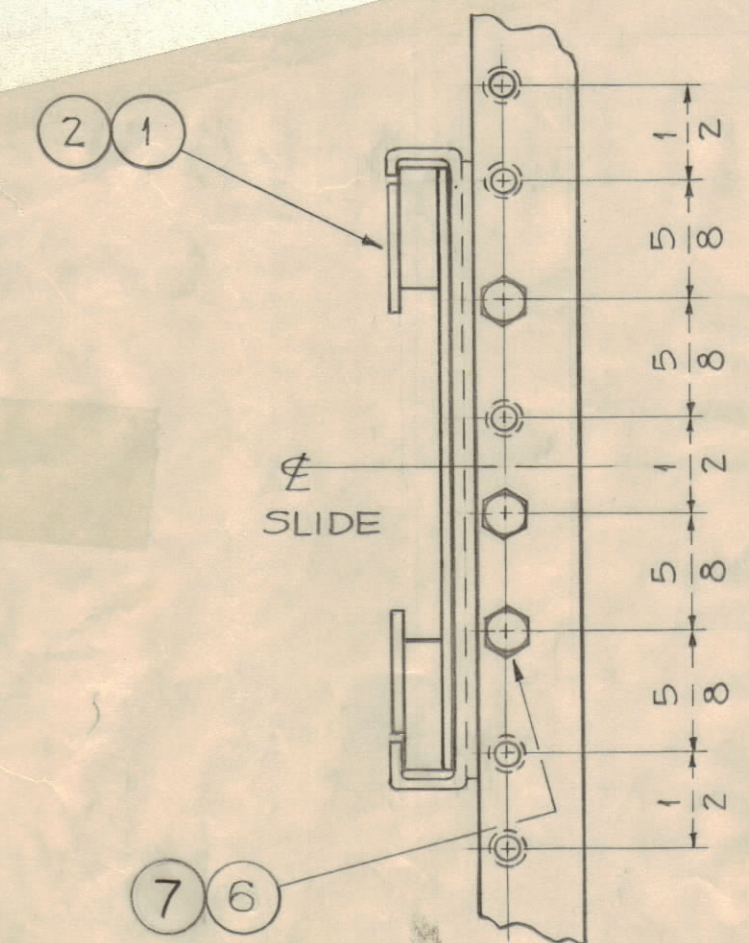
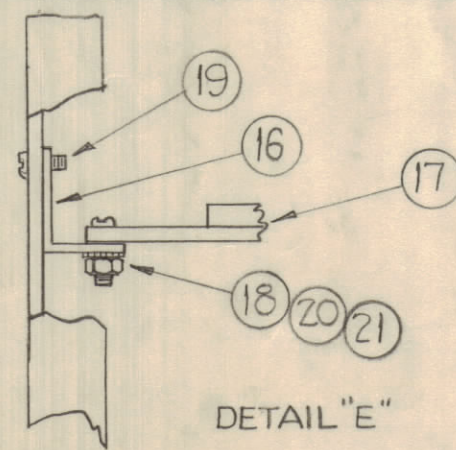


NOTE  
 ASSEMBLE ITEM 4 (A1918) BEFORE  
 ASSEMBLY OF SLIDES ITEMS 1, 2, & 3  
 ALL DIMENSIONS ARE TO  $\phi$  OF SLIDES



ALL DIMENSIONS FOR  
 SLIDES TAKEN FROM  
 THIS LIP.

REQ. ITEM	PART NO.	DESCRIPTION	SYMBOL
1	22	TK-105-18	SLIDE, TILT
2	21	NTH0832BN10	NUT, HEX
2	20	LWE08MRN	LOCKWASHER, EXT.
2	19	SCBP0832BN5	SCREW, MACHINE
2	18	SCBP0832BN8	SCREW, MACHINE
1	17	A5-116	SPRING, ASS'Y
1	16	M5-187B	BRACKET, SPRING MTG.
1	15	SP-137-7	SPRING
1	14	M5-2470	BRACKET, SPRING MTG.
3	13	NTH1032BN12	NUT, HEX
1	12	SCBP0540BN6	SCREW, MACHINE
2	11	SCBP1024BN6	SCREW, MACHINE
11	10	A-2048	ATTENUATOR ASSY.
3	9	LWE06MRN	LOCKWASHER
2	8	SCBP0632BN6	SCREW
133	7	LWE10MRN	LOCKWASHER, SPLIT
131	6	SCHH1032SN8	SCREW, HEX. HEAD
4	5	SCBP0632-BN4	SCREW, MACHINE
1	4	AX-229	A.C. POWER STRIP
4	3	TK108-18	SLIDE, TILT
2	2	TK107-18	SLIDE, TILT
1	1	TK106-18	SLIDE, STATIONARY

ISSUE	ZONE	DESCRIPTION	DATE	CH. NO.	DRAFTS	CHECKER	ENG. APP.
G		PRELIMS OF ITEMS: 5, 8, 11, 12, 18 & 19 WERE SCREWS	6-20-62	CC	WHD	OCB	
F		ITEM 12 ADDED; ITEM 13 WAS 5 REQ.; MODELS ADDED TO SECTION 'A'	10-25-62	2511	WHD	OCB	
E		3/8" DIA. WAS 3/8-3/4	2-8-62	6494	BT	OCB	
D		DIM. 13 WAS 1/4"	7/24/61	4961	J.M.	OCB	
C	BK2	ITEM 9 WAS 2 (RUNIT); ITEM 10 WAS 128 (PART NO. LW10MRN); ITEM 6 WAS 128 (SCREW)	7/20/61	4215	R.M.	OCB	
B		ITEM 8 WAS SCBP0632BN8; ITEM 10 WAS TK107-18; ITEM 11 WAS TK108-18; ITEMS 7, 8, 9, 10 ADDED; ITEM 10 WAS TK100-18	7/19/61	4120	DM	OCB	
A	B2	ITEM 10 WAS 3CB50832BN8; ITEM 10 WAS TK107-18; ITEM 10 WAS TK108-18; ITEMS 7, 8, 9, 10 ADDED; ITEM 10 WAS TK100-18	1-25-61	3969	R	OCB	

REQ. PER UNIT	MODEL	SECTION	ASSY. NO.	DATE
	RAK-11A-1			10-25-62
	RAK-11A			6-20-60

THE TECHNICAL MATERIEL CORP. MAMARONECK, NEW YORK			
ASSEMBLY, AC POWER STRIP & SLIDES			
TYPE & TEMPER	DRAWN	ELEC. DES. APP.	MECH. DES. APP.
HEAT TREAT. SPEC.	CHECKED	FINAL APPROVAL	
FINISH & SPEC. NO. A-1919			

A-1919 G