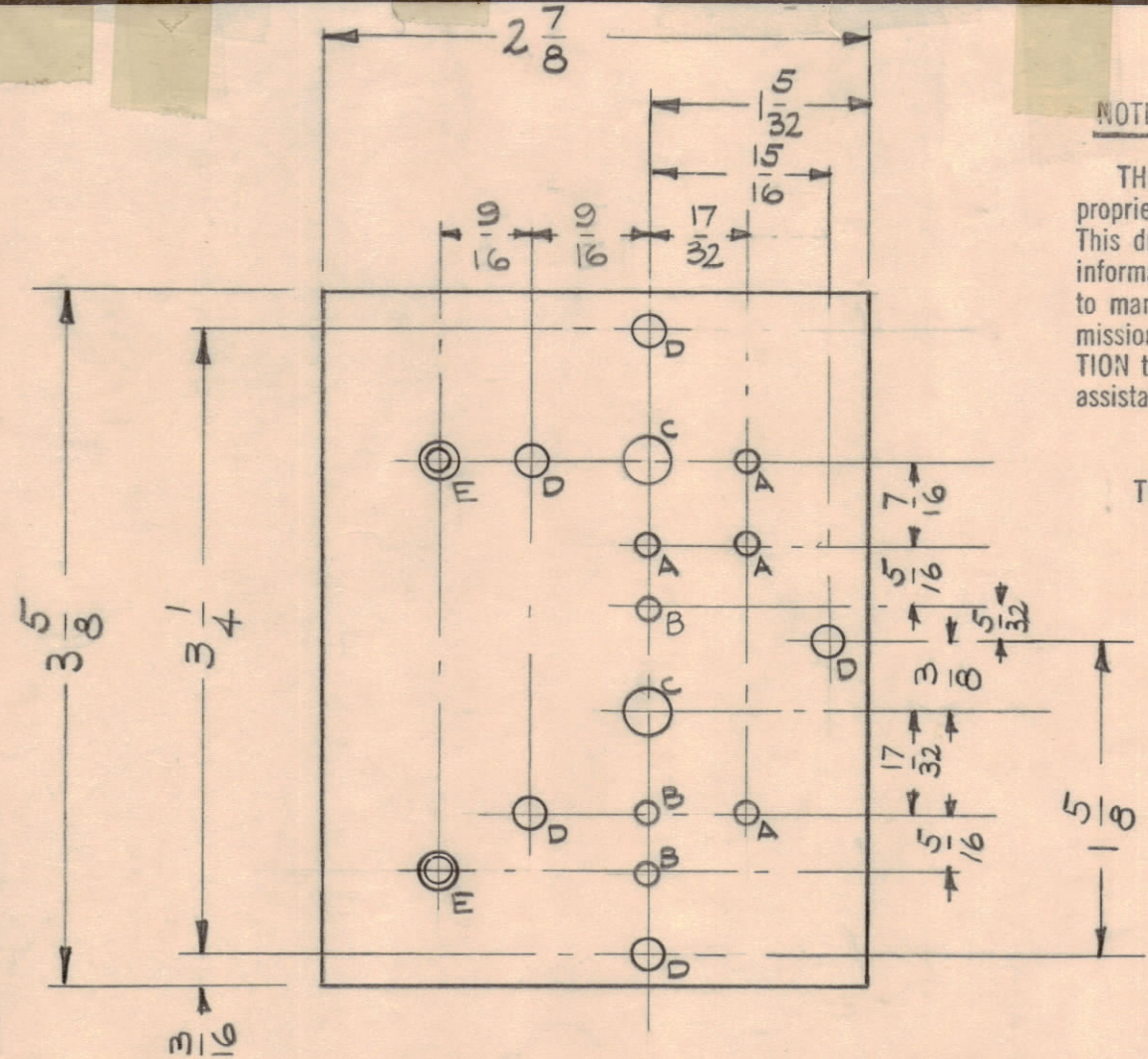


NOTICE TO PERSONS RECEIVING THIS DRAWING

THE TECHNICAL MATERIEL CORPORATION claims proprietary right in the material disclosed herein. This drawing is issued in confidence for engineering information only and may not be reproduced or used to manufacture anything shown hereon without permission from THE TECHNICAL MATERIEL CORPORATION to the user. This drawing is loaned for mutual assistance and is subject to recall at any time.

Property of: THE TECHNICAL MATERIEL CORPORATION MAMARONECK, NEW YORK

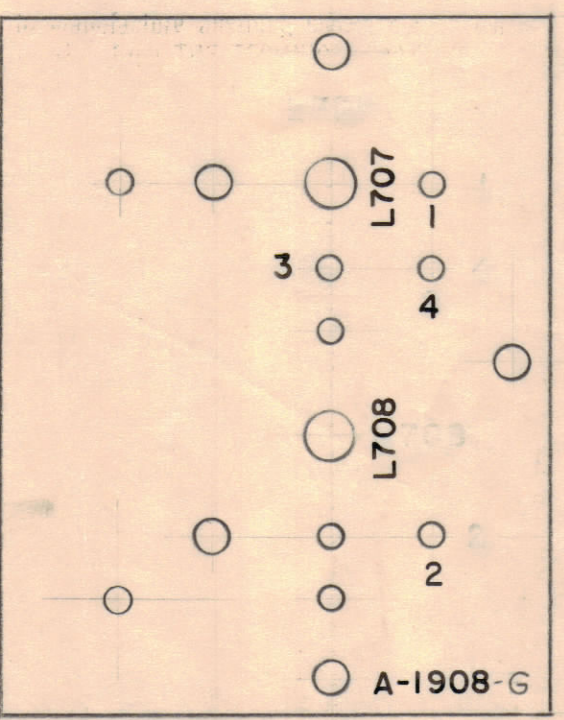


FRONT OF BOARD

- A - (.116) D. 4
 - B - 1/8 (.125) D. 3
 - C - 1/4 (.25) D. 2
 - D - 11/64 (.171) D. 5
 - E - DRILL + C'SINK 4-40-2
- 1 - BAKE FOR 1/2 HR. AT 210° F.
 2 - DIP ENTIRE BOARD IN ITEM 12 IMMEDIATELY UPON REMOVAL FROM OVEN.
 3 - BAKE FOR 1/2 HR. AT 210° F.

STAGE 1 - MACHINING

MAT'L - 1/8, XXXP. PHENOLIC (A-1908-1)



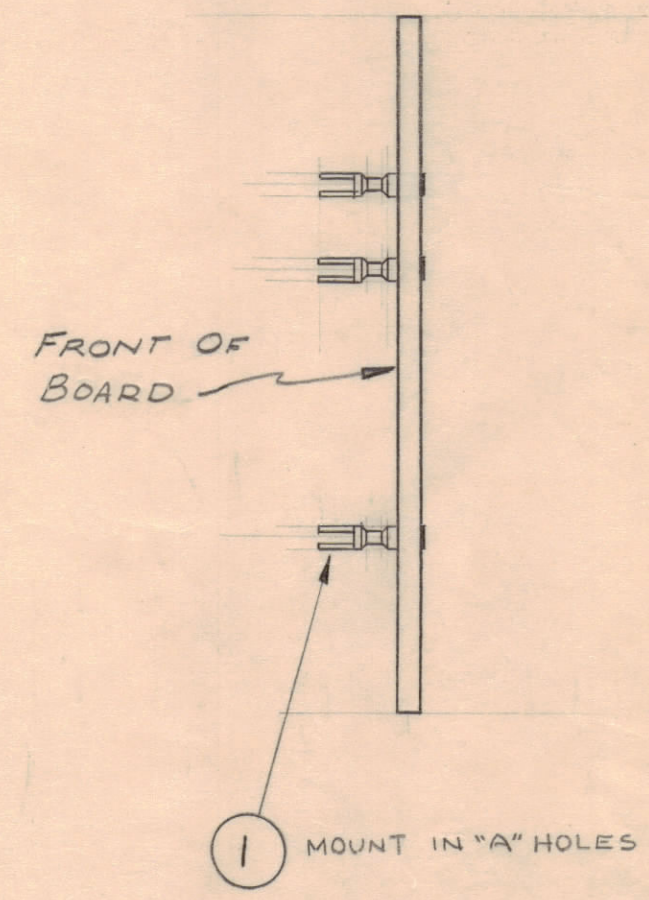
FRONT OF BOARD

ALL LETTERING 1/8 HIGH BLACK GOTHIC.

MARKING PROCESS: AS PER TMC SPECIFICATION S-727

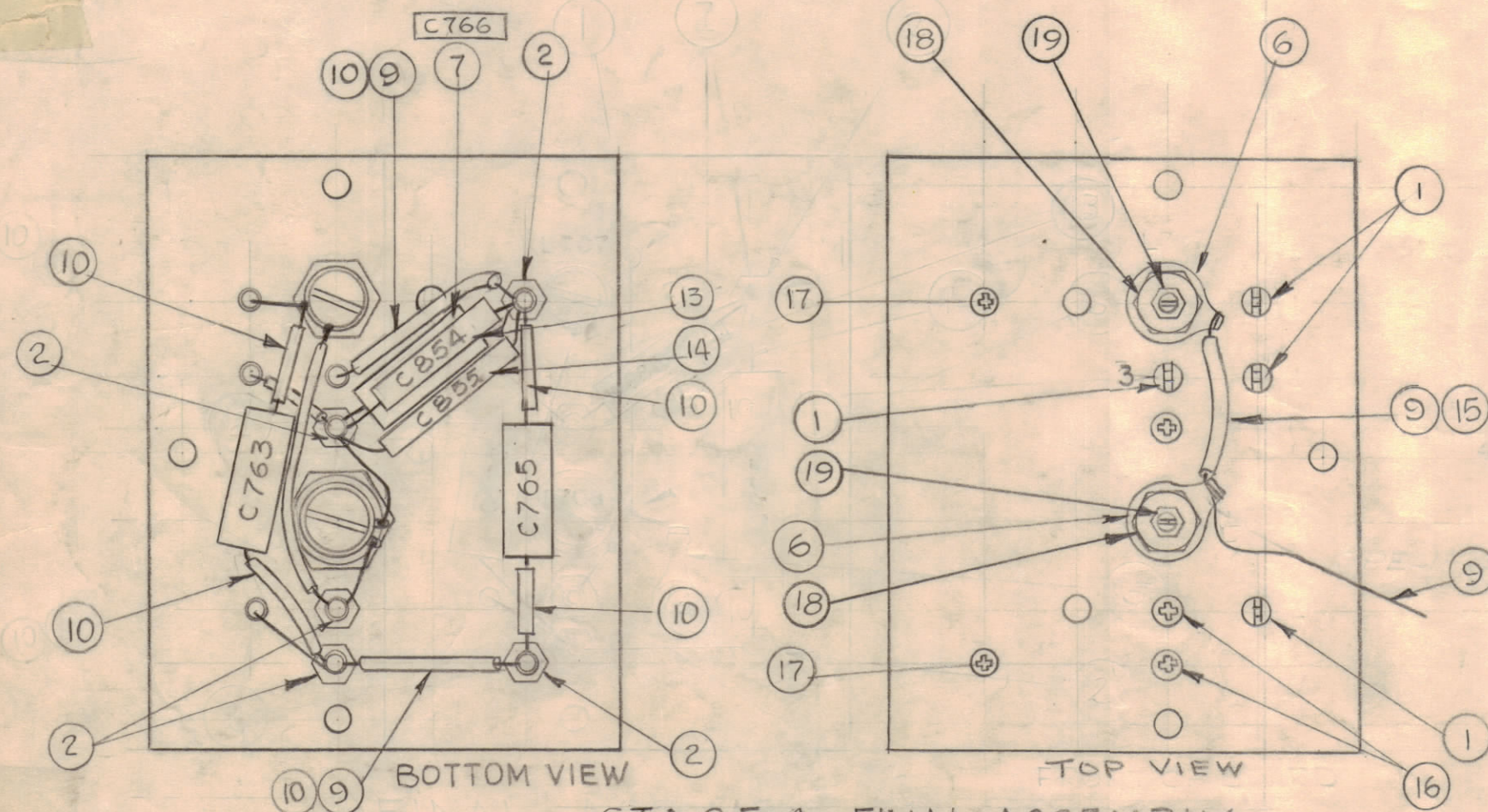
STAGE 2 - LETTERING

(A-1908-2)

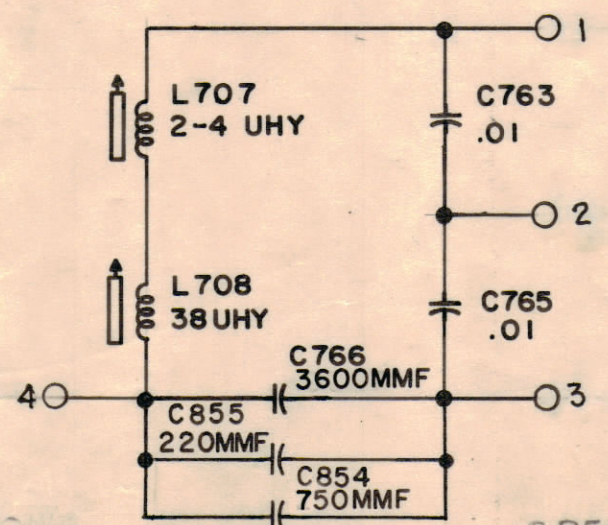


STAGE 3 - SUB-ASS'Y

(A-1908-3)



STAGE 4 - FINAL ASSEMBLY (A-1908-4)



SPECIFICATION:

- 1 - WHEN FINAL ASSEMBLY IS COMPLETE, BAKE ENTIRE UNIT FOR 1/2 HR AT 210° F.
- 2 - COOL ASS'Y AT ROOM TEMP. FOR 1/2 HR.
- 3 - BAKE ASS'Y FOR 1/2 AT 210° F

2	19	NTH0632BN8	NUT, HEX	
2	18	NT102	NUT, HEX	
2	17	SCFP0440BN4	SCREW MACHINE	
3	16	SCBP0440BN4	SCREW MACHINE	
X	15	PX-104-1-034	INSULATION, SLEEVING	BLACK
1	14	CC114SH221J	CAPACITOR, CERAMIC	C855
1	13	CC114UJ751J	CAPACITOR, CERAMIC	C854
X	12	GL-116	VARNISH	
X	11	BS-100	SOLDER, SOFT	
X	10	PX-104-2-034	INSULATION, SLEEVING	YELLOW
X	9	WL-100-4	WIRE, BUSS	
2	8	CM35F103F03	CAPACITOR, FIXED	C-765 C-763
1	7	CM35F362603	CAPACITOR, FIXED	C766
2	6	TE-104-5	LUG, SOLDERLESS	
1	5	TE-104-2	LUG, SOLDERLESS	
1	4	CL-235	COIL	L-708
1	3	CL-234	COIL	L-707
5	2	TE-102-2	TURRET, STANDOFF	
4	1	TE-109-3	TERMINAL, LUGS	

REQ. ITEM	PART NO.	DESCRIPTION	SYMBOL
THE TECHNICAL MATERIEL CORP. MAMARONECK, NEW YORK			
TERMINAL BOARD ASS'Y			
510-520 KCS OSCILLATOR			
DRAWN		P.A.	
CHECKED		FINAL APPROVAL	
A-1908 J			

ISSUE	ZONE	DESCRIPTION	DATE	CH. NO.	DRAFTS	CHECKER	ENG. APP.
J		DELE. DECIMAL POINTS IT 10 & 15. IT. 7 WAS CM35C62G. IT 8 WAS CM35C103J.	10/19/66	17049	RME		
H	C2	ITEM (14) WAS CC45UJ751 ITEM (15) WAS CC45SH221J	3-4-66	15819	G.DL		
G	4	ITEMS 18 & 19 ADDED TO B/M & PICT.	6-25-64	11646	A.M.		
F	F3	STAGE 2, LETTERING #2 ADDED	2-19-63	8259			

TOLERANCES		SCALE:	
DEC. DIM. ±	MAXIMUM ALLOWABLE TOLERANCES HAVE BEEN DETERMINED AND ANY DEVIATIONS WILL BE CAUSE FOR REJECTION.		
FRAC. DIM. ±	REMOVE ALL BURRS AND SHARP EDGES		
ANGULAR DIM. ±			

REQ. PER UNIT	MODEL	SECTION	ASS'Y. NO.	DATE
	CLL-1			5-25-60