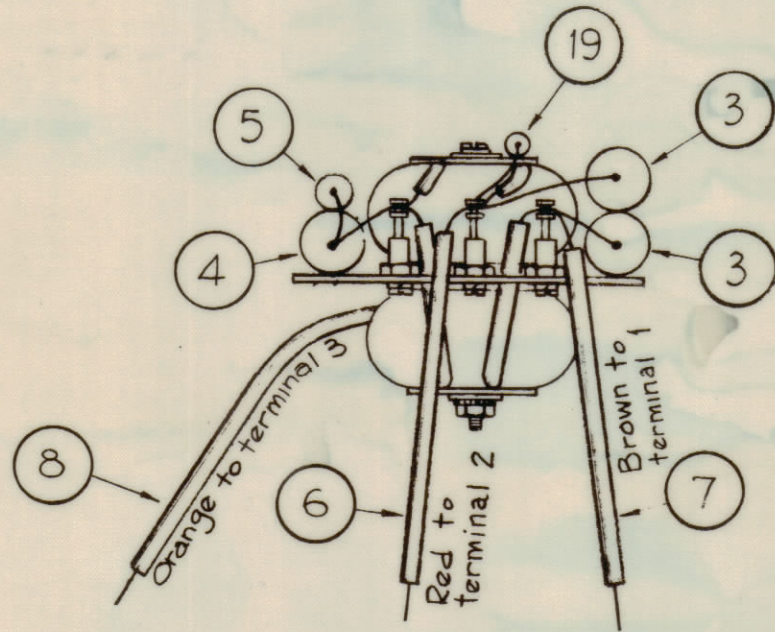
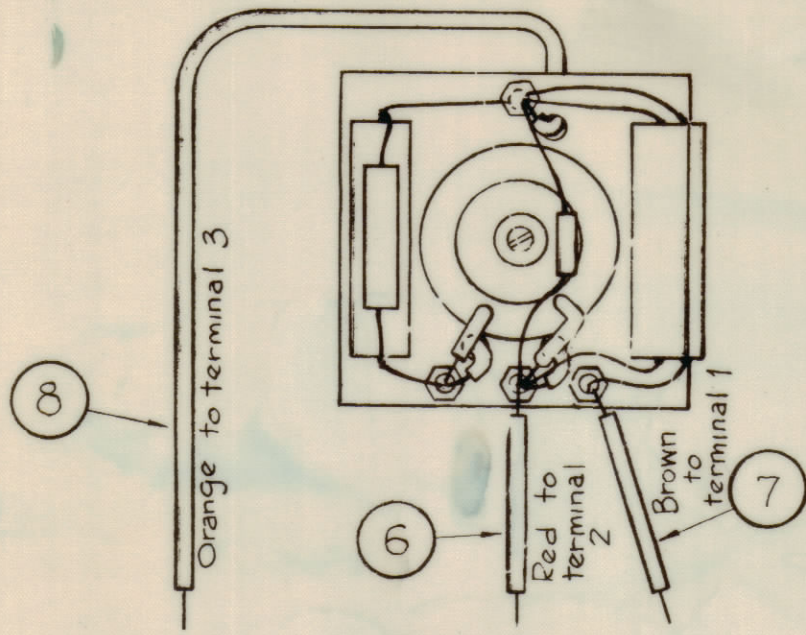


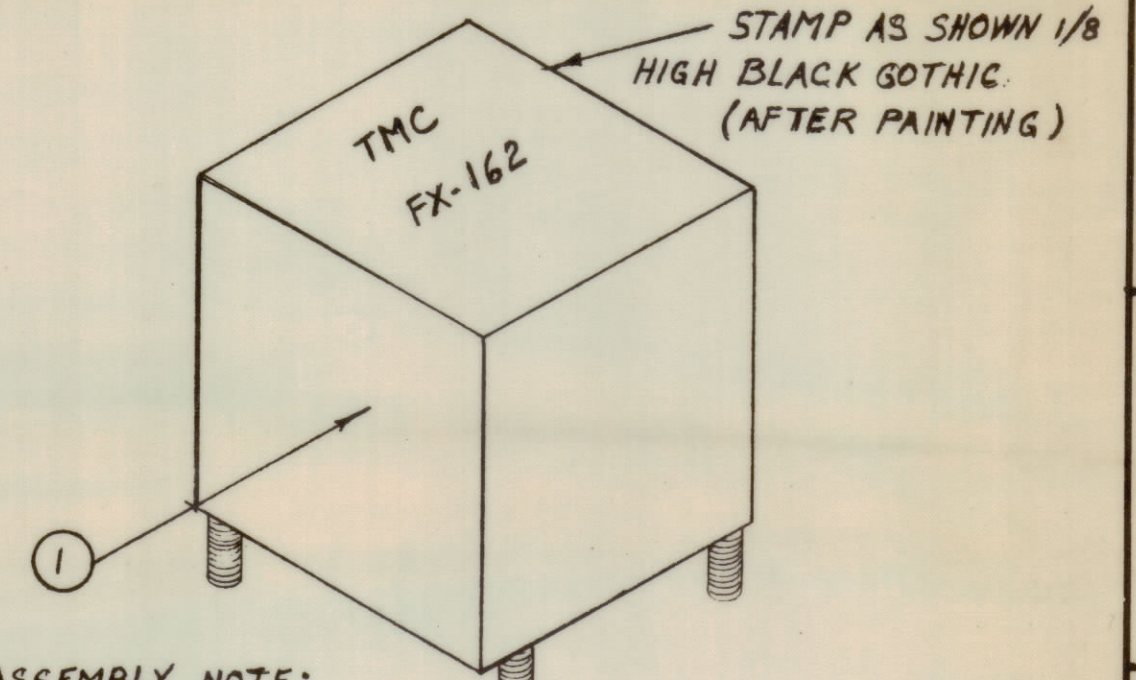
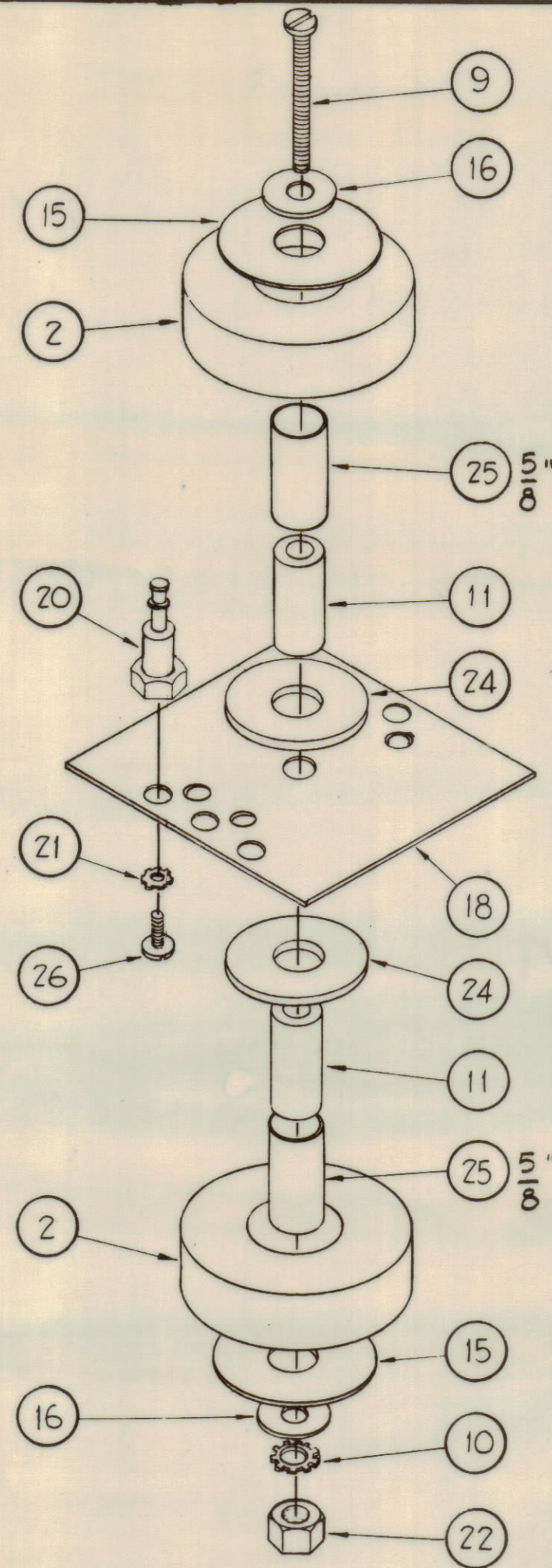
NOTICE TO PERSONS RECEIVING THIS DRAWING

THE TECHNICAL MATERIEL CORPORATION claims proprietary right in the material disclosed herein. This drawing is issued in confidence for engineering information only and may not be reproduced or used to manufacture anything shown herein without permission from THE TECHNICAL MATERIEL CORPORATION to the user. This drawing is loaned for mutual assistance and is subject to recall at any time.

Property of:
THE TECHNICAL MATERIEL CORPORATION
MAMARONECK, NEW YORK



NOTE - USE SLEEVING (ITEM 13) WHEREVER THERE EXISTS THE DANGER OF SHORTING.

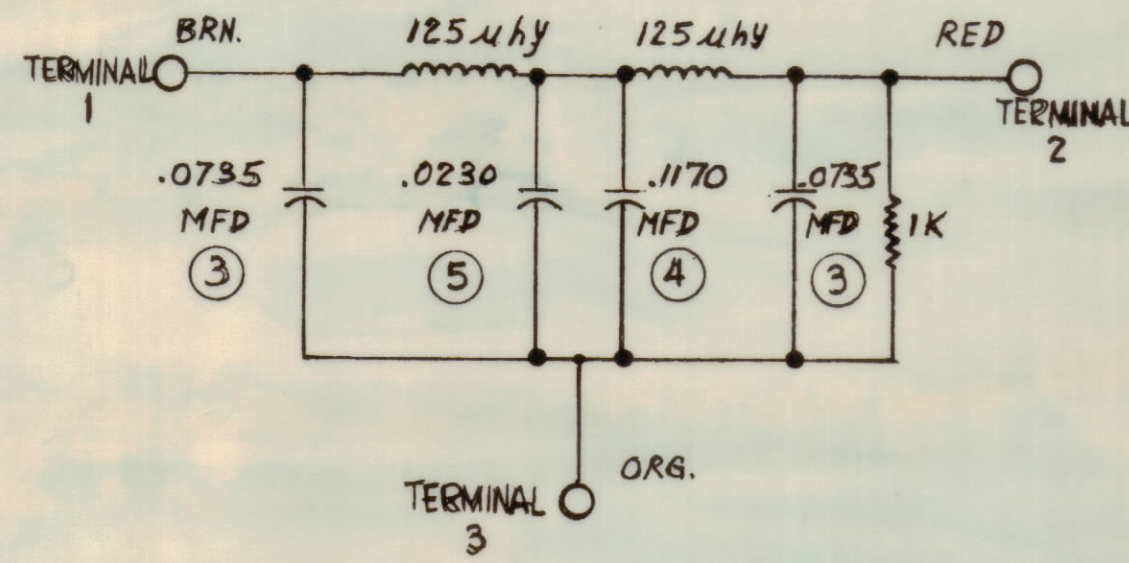


ASSEMBLY NOTE:

1. ASSEMBLE TOP COVER AND CASE.
2. LINE INSIDE OF CASE W/ FISHPAPER (ITEMS 17 & 23)
3. PLACE COIL & CAPACITOR ASSEMBLY INTO CASE.
4. BE SURE THAT THE THREE LEADS ARE IN APPROX. POSITION FOR SOLDERING TO THEIR RESPECTIVE TERMINALS.
5. FILL CASE W/ GL-119 (5/8 FROM TOP)
6. PLACE BOTTOM COVER INTO CAN AND SOLDER ALL AROUND.
7. SOLDER ALL TERMINALS.
8. FINISH AS FOLLOWS: 1- DEGREASE, 2- S114-ZINC CHROMATE PRIMER, 3- S115 TMC SMOOTH GREY ENAMEL.
9. REFER TO S-494 FOR FINAL TEST.

4	26	SCBP0440BN3	SCREW, MACHINE	
1-1/4	25	PX-100-1-263	INSULATION, SLEEVING	BLACK
2	24	GA-140-3N6	GASKET, NEOPRENE	
1	23	IM-171-4	INSULATION, FISHPAPER (1 7/8 x 2 1/2)	
1	22	NTH0632BN8	NUT, HEX	
4	21	LWE-04-MRN	LOCKWASHER, EXTERNAL TOOTH	
4	20	TE-102-2	STAND-OFF	
1	19	RC20GF102J	RESISTOR, CARBON	
1	18	MS-2276	PLATE, MOUNTING	
1	17	IM-171-3	FISHPAPER, INSULATION (8 x 1 3/4)	
2	16	FW08HBN	WASHER, FLAT	
2	15	WA-109-55	WASHER, FIBER	
X	14	GL-119	POTTING COMPOUND	
X	13	PX-104-1-034	SLEEVING, INSULATED	
X	12	BS-100	SOLDER, SOFT	
2	11	TE-140	SPACER, 5/8" LONG	
1	10	LWE-06MRN	LOCKWASHER, EXTERNAL	
1	9	SCBP 0632 BN28	SCREW, MACHINE	
3"	8	MWC-24 (7) U3	CABLE, INSULATED	ORANGE
3"	7	MWC 24 (7) U1	CABLE, INSULATED	BROWN
3"	6	MWC 24 (7) U2	CABLE, INSULATED	RED
1	5	CX-104-18	CAPACITOR, FIXED, POLYSTYRENE	
1	4	CX-104-22	CAPACITOR, FIXED, POLYSTYRENE	
2	3	CX-104-13	CAPACITOR, FIXED, POLYSTYRENE	
2	2	CL-201-125-000	COIL	
1	1	BX-175	CASE & COVERS	

SCHEMATIC



E	CHG'D REQ 17.17 FR. X TO 1. CHG'D IT 19 FOR FR. K TO J. CHG'D IT 26 "SCBS" TO "SCBP" DELE. DECIMAL IT. 25. IT. 13 P/N WAS PX104-1-022 - IT. 9 P/N WAS SCBS0632BN28	10-19-66	170	R.M.E.	
D	DWG REVISED TO SHOW LEADS RUN THRU NEW HOLES IN ITEM (12)	6-27-63	9382		
C	C2 ITEM 14 WAS GL-106	5-19-61	4928	MAF	
B	Complete Revision	5-12-61	4892	J.C.B.	
A	B2 ITEM 2 WAS CL-201-125	9-6-60		CS	

1	CLL-1			5-17-60
REQ PER UNIT	MODEL	SECTION	ASSY. NO.	DATE

REQ. ITEM	PART NO.	DESCRIPTION	SYMBOL
STOCK SIZE			
MATERIAL			
TYPE & TEMPER			
HEAT TREAT. SPEC.			
FINISH & SPEC. NO.			
THE TECHNICAL MATERIEL CORP. MAMARONECK, NEW YORK			
"FX-162 ASS'Y"			
2KC LOW PASS FILTER			
DRAWN		ELEC. DES. APP.	
CHECKED		MECH. DES. APP.	
FX-162		FINAL APPROVAL	
A-1905			