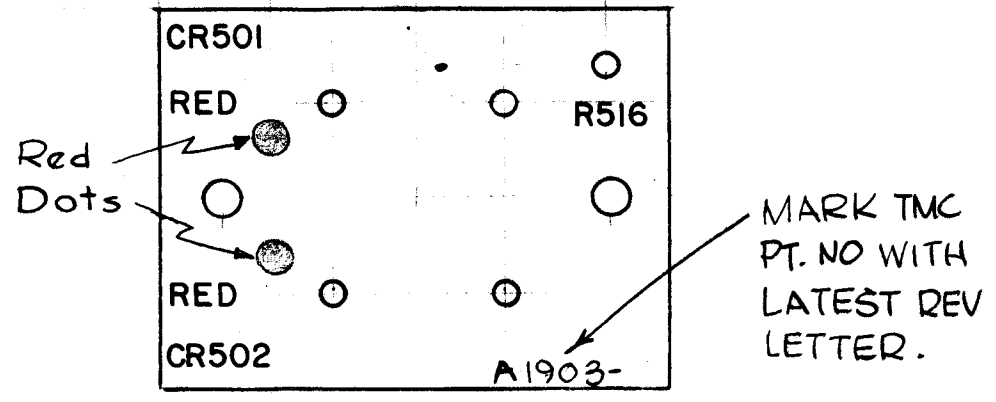
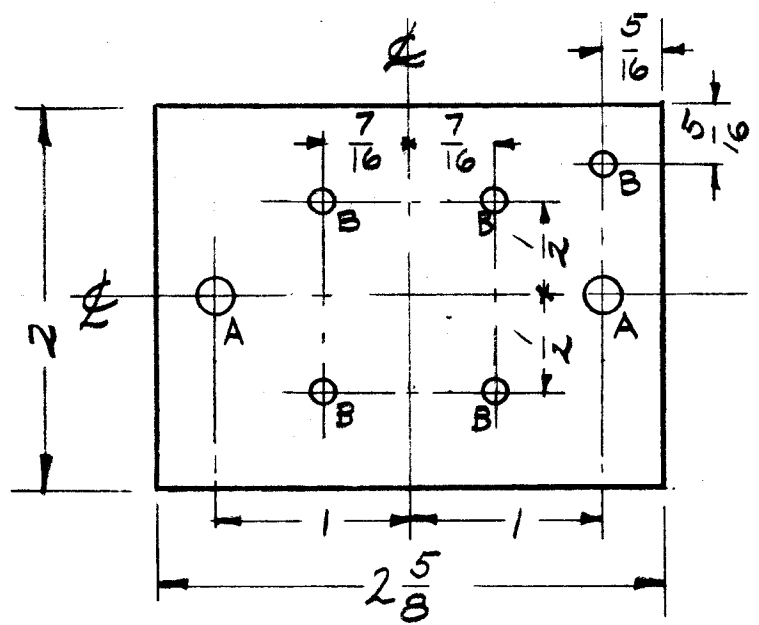


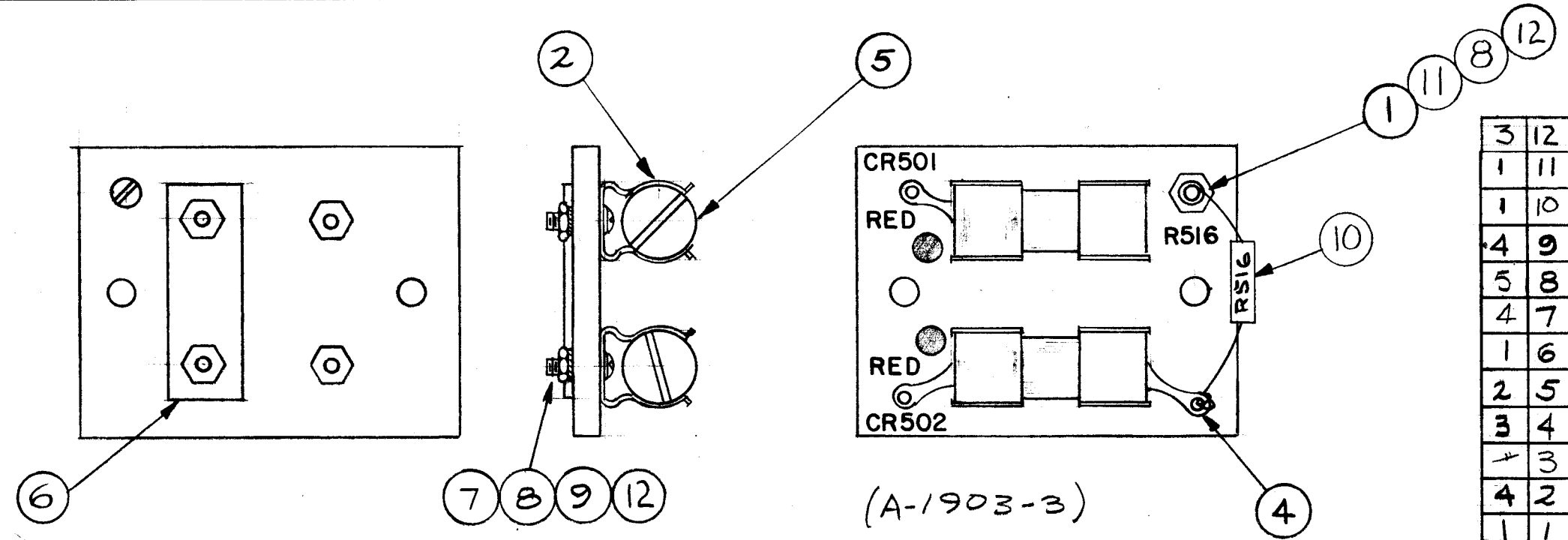
A 1903 J



MARKING PROCESS: AS PER TMC SPECIFICATION S-727.

A- 3/16 (.187) DIA, 2
 B- 1/8 (.125) DIA. 5
 MAT'L-PHENOLIC XXXP
 1/8 TH'K.
MACHINING
 (A-1903-1)

ALL LETTERING 1/8 HIGH BLACK GOTHIC.
 DOTS 3/16 DIA RED FILLED
LETTERING
 (A-1903-2)



REQ. ITEM	PART NO.	DESCRIPTION
3	12	FW04HBN WASHER, FLAT
1	11	SCBP0440BN7 SCREW, MACHINE
1	10	RC42GF122J RESISTOR, FIXED, COMPOSITION R516
4	9	NTH0440BNG NUT, HEX
5	8	LWE64M RN LOCKWASHER
4	7	SCBP0440BN8 SCREW, MACHINE
1	6	MS-2277 JUMPER, BAR
2	5	RX-107-1 RECTIFIER, SELENIUM CR-501 CR-502
3	4	TE-104-1 LUG, GROUND
+	3	DELETED
4	2	FC102-4XXN CLIP, FUSE
1	1	TE-102-2 STANDOFF

ISSUE ITEM	CHANGED FROM	DATE	CH. NO.	DRAFTS	CHECKER	ENG. APP.
J	ADD #12 .117 WAS BNG. IT 11. WAS BNG. IT 10 WAS K	11-4-66	17178	RME	PS	[Signature]

TOLERANCES: DEC. DIM. ±, FRAC. DIM. ±, ANGULAR DIM. ±

SCALE: MAXIMUM ALLOWABLE TOLERANCES HAVE BEEN DETERMINED AND ANY DEVIATIONS WILL BE CAUSE FOR REJECTION. REMOVE ALL BURRS AND SHARP EDGES

REQ. PER UNIT	MODEL	PROJECT NO.	ASS'Y. NO.	DATE
1	CPP-2	E-1047-1		5-5-60

USED ON

TYPE & TEMPER	HEAT TREAT. SPEC.	DRAWN	CHECKED	FINAL APPROVAL
		[Signature]	[Signature]	[Signature]

FINISH & SPEC. NO. ELEC. DES. APP. MECH. DES. APP. A.1903 J