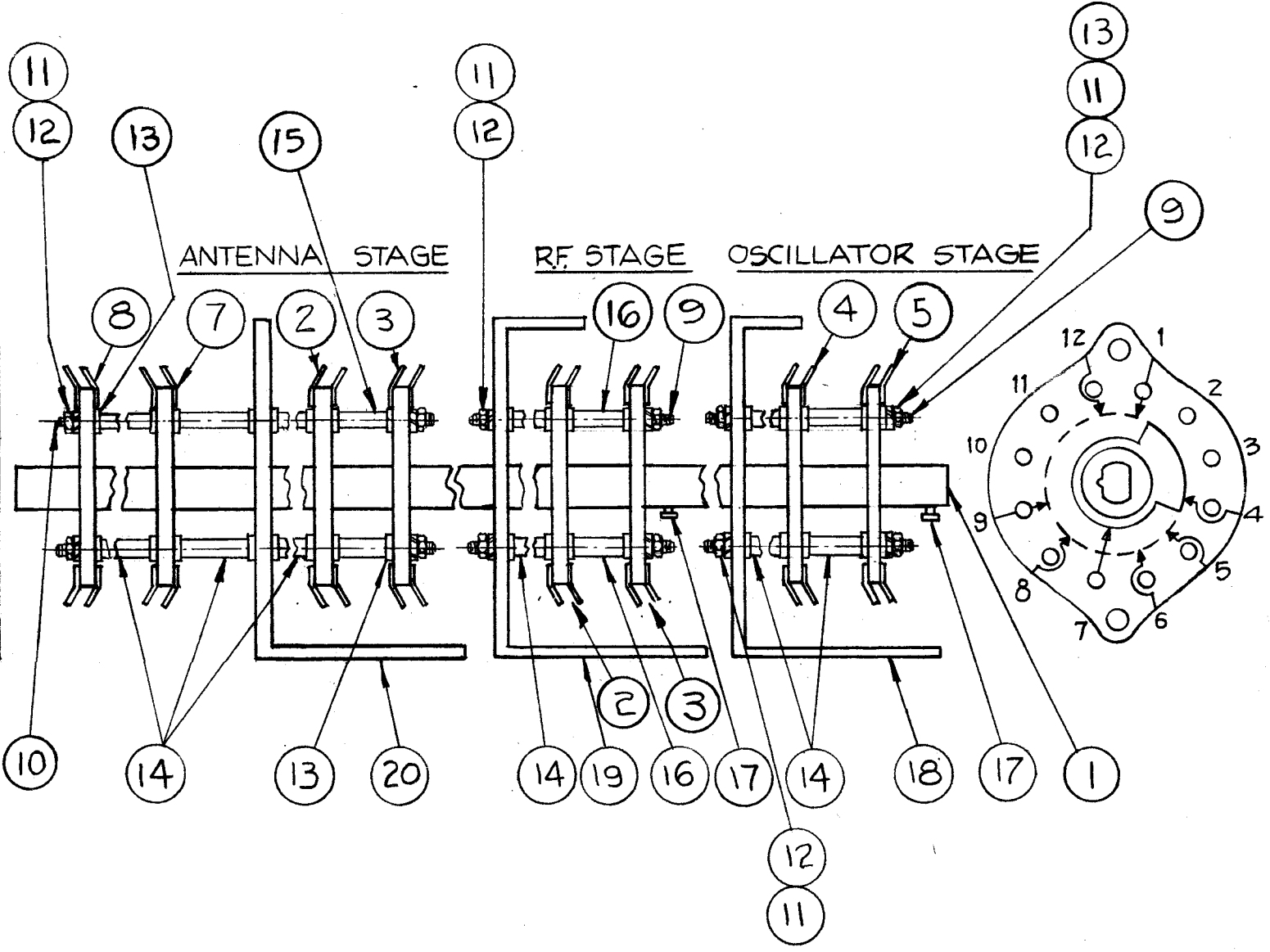


A-1899 B

REVISIONS

SYM	DESCRIPTION	DATE	E.M.N. NO.	DRAFT	CHKD	APPD
A	REVISED & REDRAWN (WAS 1 SIZE)	8-27-63	9842	AK	YLS	WFB
B	IT. 6 WAS WS-100-6, IT. 2 WAS 1 REQ	3.18.68	18822	H.G.	JW	EFM



REQ'D.	ITEM	PART NUMBER	DESCRIPTION	SYMBOL
1	20	MS-651	CHASSIS, ANT. SECTION	
1	19	MS-625	CHASSIS, R. F. SECTION	
1	18	MS-650	CHASSIS, OSCILLATOR SECTION	
2	17	SC-123-0-4	SCREW, DRIVE	
2	16	PM-346-5	SPACER	
2	15	PM-346-4	SPACER	
12	14	PM-346-2	SPACER	
34	13	WA-123	WASHER, FIBER	
12	12	NTH0540BN6	NUT, HEX	
12	11	LWS05LRN	LOCKWASHER, SPLIT	
2	10	SM0540BP2.25	STUD	
4	9	SM0540BP1.625	STUD	
1	8	WS-118	WAFER, SWITCH	S1AA
1	7	WS-117	WAFER, SWITCH	S1A
	6	DELETED		
1	5	WS-100-5	WAFER, SWITCH	S1G
1	4	WS-100-4	WAFER, SWITCH	S1F
2	3	WS-100-3	WAFER, SWITCH	S1C, S1E
2	2	WS-100-2	WAFER, SWITCH	S1B, S1D
1	1	PM-480	SHAFT	

LIST OF MATERIAL

MATERIAL		THE TECHNICAL MATERIEL CORP. MAMARONECK, NEW YORK			
FINISH		TITLE RANGE SELECTOR SWITCH ASSEMBLY, S1			
UNLESS OTHERWISE SPECIFIED DIMENSIONS ARE IN INCHES AND INCLUDE CHEMICALLY APPLIED OR PLATED FINISHES		DRAWN AK 8-27-63	DATE 8-27-63	FINAL APPROVAL BP	DATE
DECIMALS .X ± .05 .XX ± .01 .XXX ± .005		CHECKED JW	DATE	A-1899	B
TOLERANCES FRACTIONS ± 1/64 ANGLES ± 0° 30'		ELECT. DES. AK	DATE		

Q'TY./UNIT	MODEL USED ON	ASS'Y. NO.
1	GPR-91RXD	BANDSWITCH
1	GPR-90RXD	BANDSWITCH
SCALE	CODE	

THE CONTENTS OF THIS DRAWING ARE THE EXCLUSIVE PROPERTY OF THE TECHNICAL MATERIEL CORP. ITS UNAUTHORIZED USE OR REPRODUCTION IN WHOLE OR IN PART IS STRICTLY FORBIDDEN.

NOTE:
THIS DWG. TO BE USED AS AN INSTALLATION REF.
ONLY, FOR INDIVIDUAL STAGES AS SHOWN.

NOTES