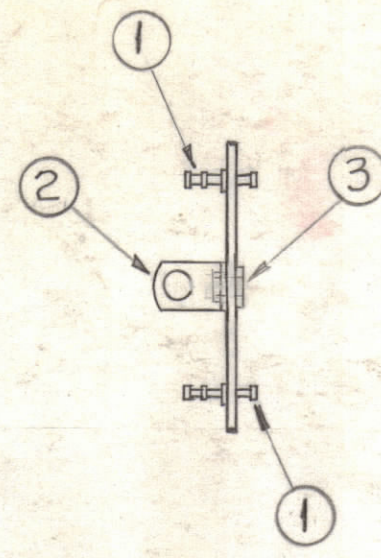
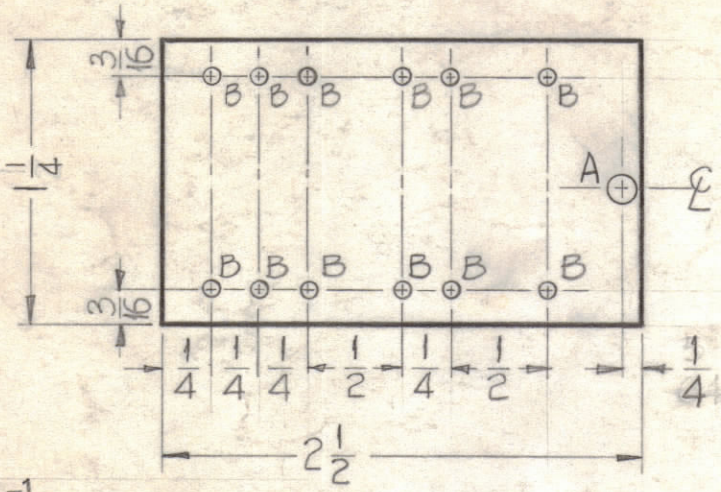
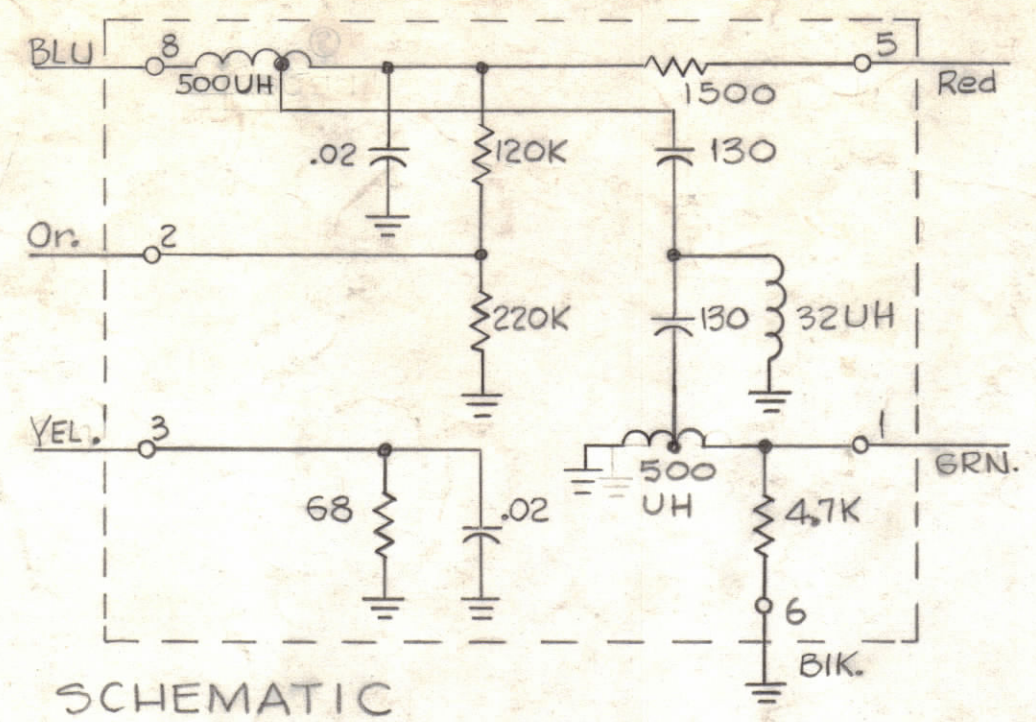


HOLES REQ.
A ~.140 DIA. 1
B ~.078 " 12



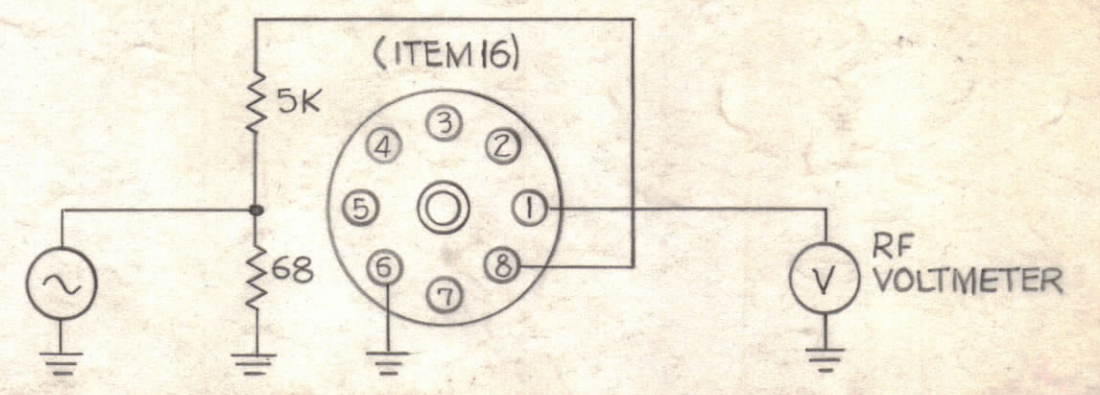
A-1874-1 MACHINING Material ~ 3/4" Phenolic XXXP Natural

A-1874-2 MECH. SUB-ASSY

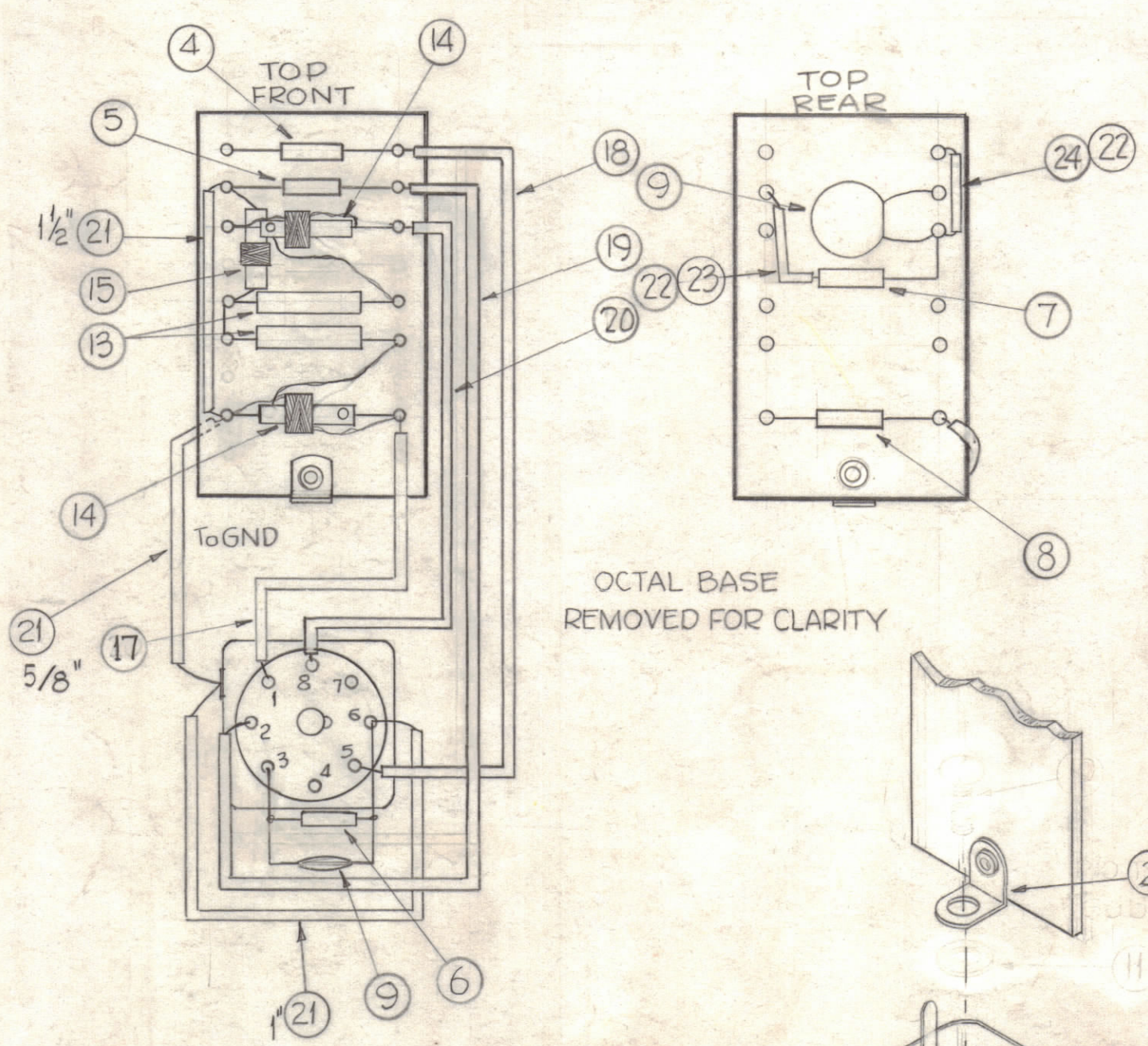
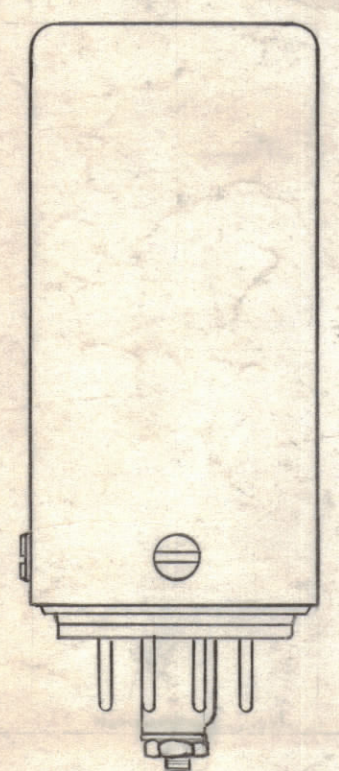
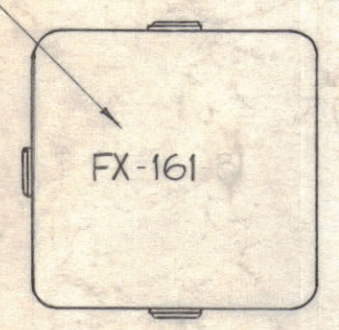


SCHEMATIC

TEST PROCEDURE
(CONNECT CIRCUIT AS SHOWN BELOW)



STAMP TMC PART NO. AS SHOWN, 1/8" HIGH BLACK GOTHIC.



A-1874-3 FINAL ASSEMBLY.

FREQ	ATTENUATION MUST BE GREATER THAN
MCS	DB
3.5	0
1.5	0
1.0	10
.5	35

RESISTANCE WITH RESPECT TO PIN 6 (GND)	
PIN	RESISTANCE
1	6
2	220K
3	68
4	INFINITY
5	340K
7	INFINITY
8	340K

QTY	DESCRIPTION	MATERIAL	FINISH
X 25	BS 100	SOLDER, TIN ALLOY	
3/8"	24 PX 104-3-022	SLEEVING, INSULATION	RED
1/2"	23 DX 104-8-022	SLEEVING, INSULATION	ORANGE
X 22	WL 100-8	WIRE, BUSS-BAR, TINNED	
3/8"	21 MWC24(7)U0	WIRE, ELECTRICAL, INSULATED	BLACK
2"	20		BLUE
3 1/2"	19		ORANGE
3 1/2"	18		RED
4"	17 MWC24(7)U5	WIRE, ELECTRICAL, INSULATED	GREEN
1	16 PO-106-3-NT	VECTOR, SOCKET	
1	15 CL 228	COIL, RF, 32 UH	
2	14 CL 227	COIL, RF, TAPPED 500 UH	
2	13 CMI5F131G03	CAPACITOR, MICA	
1	12 DELETED	NUT, HEX HEAD	
1	11 DELETED	WASHER, FLAT	
1	10 SCBS0632BN20	SCREW, MACHINE	
2	9 CC 100-24	CAPACITOR, DISK	
1	8 RC20GF472J	RESISTOR, CARBON	
1	7 RC20GF124J		
1	6 RC20GF680J		
1	5 RC20GF224J		
1	4 RC20GF152J	RESISTOR, CARBON	
1	3 EY-100-1	EYELET, ROLLED FLANGE	
1	2 TE 167	LUG, ANGLE, THREADED	
12	1 TE 168-4B	TERMINAL, MINIATURE	

REV	DESCRIPTION	DATE	CH. NO.	DRAFTS	CHECKER	ENG. APP.
L	DELE ITS. 11 & 12 & ADD IT 2 TO PICTORIAL	10/6/70	19999	GE	CU	MSQ
K	ITEMS 4-8 TOL WAS K. ITEM 13 WAS CM20B131G; CENTER ON 500UH CHOKE RELOC. DOT ITEM 14 RELOC. IT 23 & 24 DEC. DEL	7/11/66	16525	WFO	JCF	
J	E.F.G. LEADS TO IT. 14 RELOCATED	9.16.64	12367	WFB		
H	5766.C6 ADDED STAGE NUMBERS	3-29-63	8666			
G	B1 ITEM 3 WAS SCBS0632BN4	7-5-61	5170	G.O.L.		
F	C2 ITEM 16 WAS PO-106-2-T	4-18-61	4708			
E	H4 ON SCHEMATIC, TAP ON 500 UH COIL RELOCATED	3-1-61	4268	W.F.F.		
D	F7 ON STAMPING (B) WAS DELETED ON FX-161	2-28-61	4214	RU		
C	H7 DIM. 1/4 WAS 1/2 (MACHINING)	1-16-61	3936	RU		
B	+ REVISED AND REDRAWN	1/2/61	3821	DRM		

UNLESS OTHERWISE SPECIFIED:
SCALE DO NOT SCALE
DIMENSIONS ARE IN INCHES
TOLERANCES ON FRACTIONS ± 1/64 DECIMALS ± .005 ANGLES ± 1/2°
MAXIMUM ALLOWABLE TOLERANCES HAVE BEEN DETERMINED AND ANY DEVIATIONS WILL BE CAUSE FOR REJECTION. REMOVE ALL BURRS & SHARP EDGES

REQ. PER UNIT	MODEL	SECTION	ASS'Y. NO.	DATE
1	CMO-1			1-12-61

REQ.	ITEM	PART NO.	DESCRIPTION	SYMBOL
THE TECHNICAL MATERIEL CORP. MAMARONECK, NEW YORK				
FX-161 ASS'Y. FILTER, HIGH PASS				
DRAWN		CHECKED		FINAL APPROVAL
D.P.M.		J. Chiele		W.M.
C.R.F.				
FINISH & SPEC. NO.		ELEC. DES. APP.		MECH. DES. APP.
		SHEET		OF
		A-1874		L