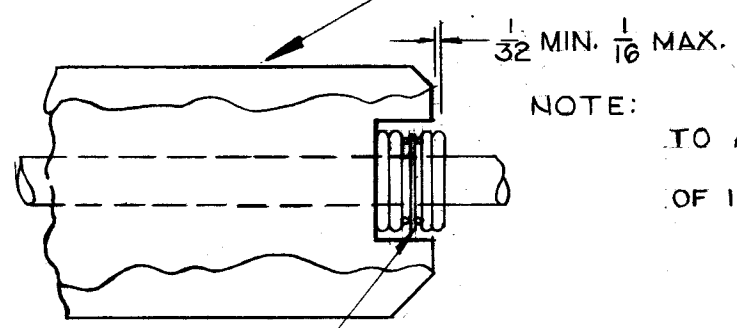
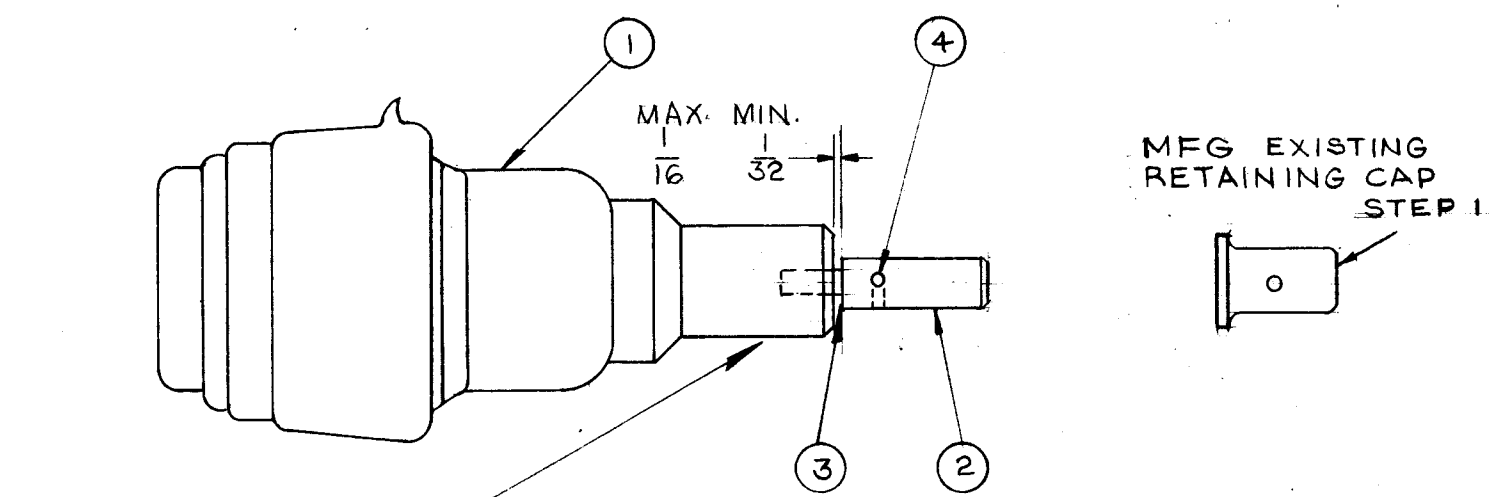


A-1861

PROCEDURE

1. REMOVE STOCK RETAINING CAP
2. ROTATE SHAFT CCW TO LIMIT.
3. BE SURE WASHERS ARE PLACED ON SHAFT IN ORDER SHOWN.
4. PLACE ADAPTER SHAFT, ITEM 2, ON CAPACITOR SHAFT IN POSITION SHOWN, TIGHTEN SET SCREW ITEM 4, (NOTE: SET SCREW MUST BE ON FLAT OF CAPACITOR SHAFT.)
5. DRILL THROUGH SHAFT ASSEMBLY PILOT HOLE WITH #52 DRILL, PIN THROUGH WITH ITEM 3.



NOTE:
TO ARRIVE AT THIS DIMENSION,
ADDING ONE OR MORE
OF ITEM 5 MIGHT BE REQUIRED.

BEARING WASHER
IN MIDDLE 2
THRUST WASHERS
ON EACH SIDE (STEP 5)

NOTICE TO PERSONS RECEIVING THIS DRAWING

THE TECHNICAL MATERIEL CORPORATION claims proprietary right in the material disclosed hereon. This drawing is issued in confidence for engineering information only and may not be reproduced or used to manufacture anything shown hereon without permission from THE TECHNICAL MATERIEL CORPORATION to the user. This drawing is loaned for mutual assistance and is subject to recall at any time.

Property of:
THE TECHNICAL MATERIEL CORPORATION
MAMARONECK, NEW YORK

SEE NOTE -

X	5	WA-133-5	WASHER, THRUST (IF REQUIRED)	
3	4	AN565D6H3	SET SCREW	
1	3	PN59-062-8	PIN SPRING	
1	2	PM-628	SHAFT, ADAPTER	
1	1	CB-148	CAPACITOR, VAR, VAC, 15-1200UUF	
REQ. ITEM	PART NO.		DESCRIPTION	SYMBOL
STOCK SIZE			THE TECHNICAL MATERIEL CORP. MAMARONECK, NEW YORK	
MATERIAL			AM-112 ASSY CAPACITOR VAR, VACUUM	
TYPE & TEMPER		HEAT TREAT. SPEC.	DRAWN	CHECKED
FINISH & SPEC. NO.		ELEC. DES. APP.	MECH. DES. APP.	A-1861

ISSUE	ITEM	CHANGED FROM	DATE	CH. NO.	DRAFTS	CHECKER	ENG. APP.
TOLERANCES			SCALE:				
DEC. DIM. ±			MAXIMUM ALLOWABLE TOLERANCES HAVE BEEN DETERMINED AND ANY DEVIATIONS WILL BE CAUSE FOR REJECTION.				
FRAC. DIM. ±			REMOVE ALL BURRS AND SHARP EDGES				
ANGULAR DIM. ±							

1	GPT-40K	AT-101	4-8-60
REQ. PER UNIT	MODEL	PROJECT NO.	ASSY. NO.
USED ON			