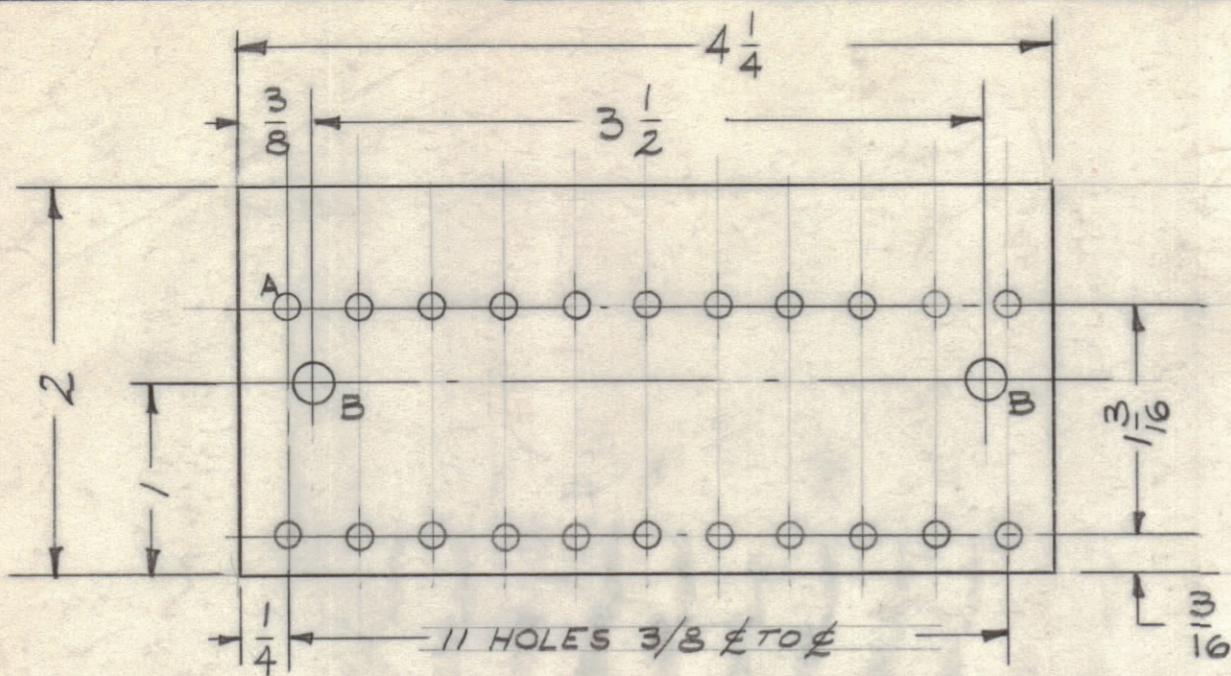
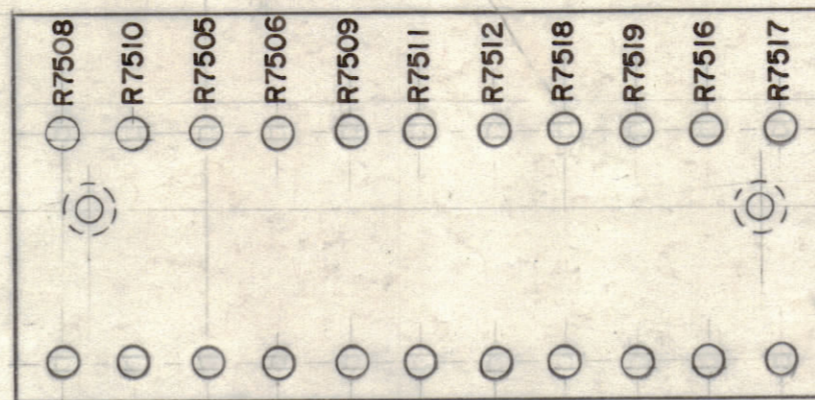


IF IT IS FOUND DESIRABLE TO CHANGE ANY TOLERANCE OR OTHER DETAIL SPECIFIED ON THIS DRAWING NOTIFY THE PURCHASER PROMPTLY.

MAXIMUM ALLOWABLE TOLERANCES HAVE BEEN DETERMINED AND DEVIATIONS WILL BE CAUSE FOR REJECTION. REMOVE ALL BURRS AND SHARP EDGES.



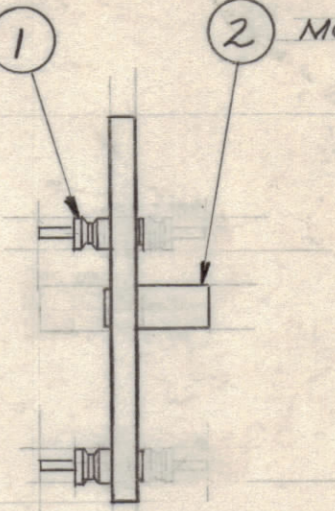
A - #32 DRILL (.116) DIA. 22 REQ'D  
 B - #12 " (.189) DIA. 2 "  
 MACHINING A-1817-1



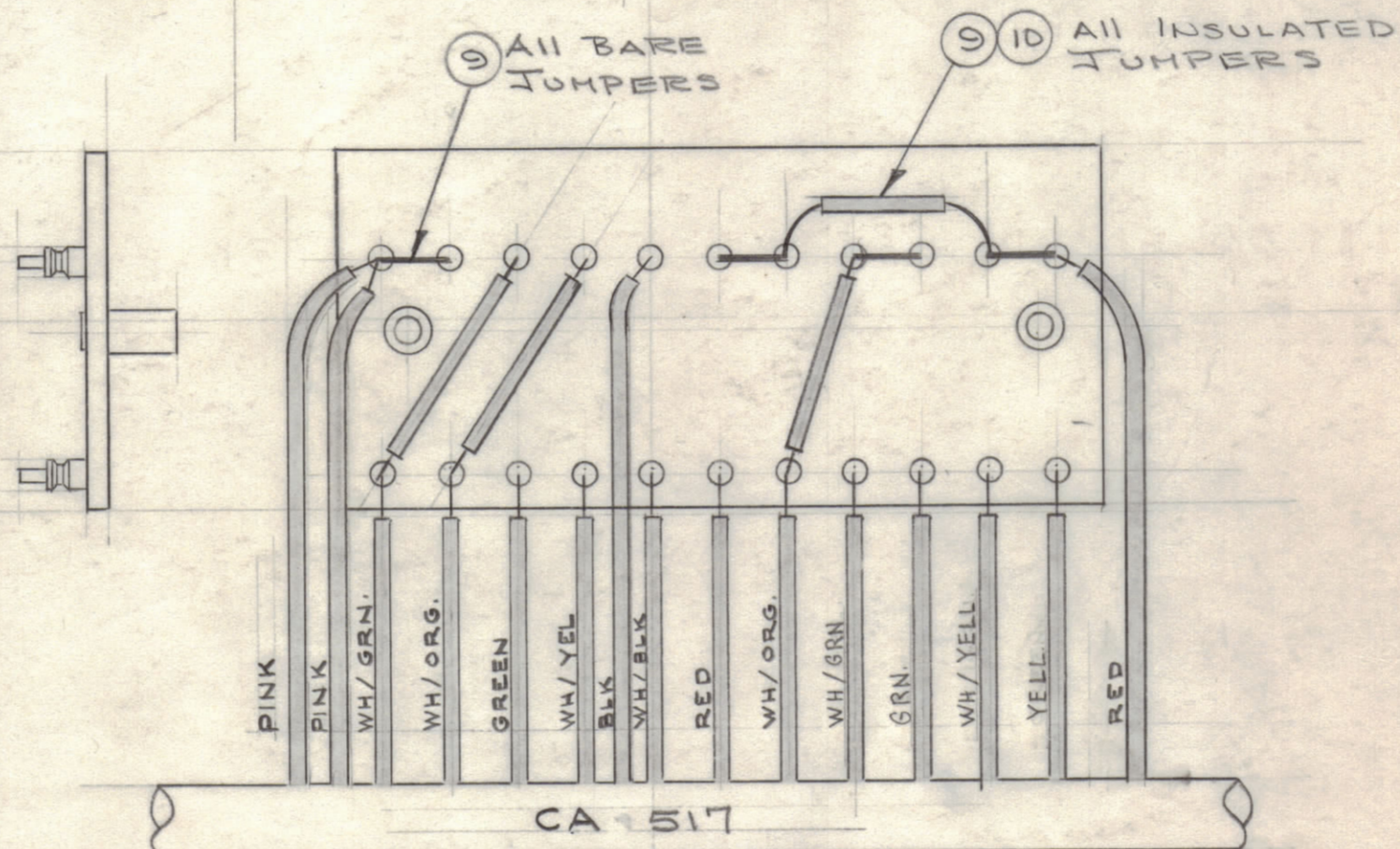
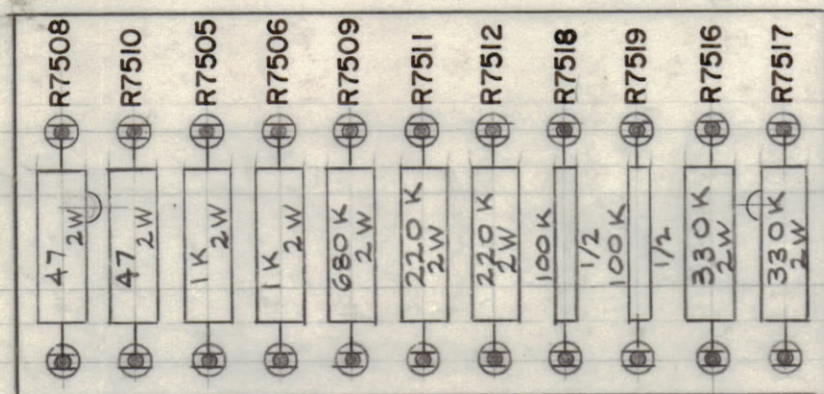
ALL LETTERING TO BE 1/8 BLACK GOTHIC  
 APPLY FUNGUS PROOFING AFTER MARKING  
 AS PER TMC S-113

LETTERING - A-1817-2

MOUNT IN "A" HOLES ① MOUNT IN "B" HOLES ②



MECHANICAL ASS'Y - A-1817-3



NOTE - CABLE, CA-517 SHOWN FOR REF ONLY.

FINAL ASSEMBLY - A-1817-4

NOTE: SOLDER ALL CONNECTIONS EXCEPT THOSE FROM CABLE. CABLE CONNECTIONS WILL BE SOLDERED UPON ASS'Y OF TERM. BOARD INTO UNIT.

A-1817 C

C	RESISTORS, TOL. WERE "K"	3-1-67	17872	RME			
B	S-113 NOTE ADDED	4-13-64	11186	ASB			
A	4 YELL. WAS GRN.	2-3-60	1829	W.S.	J.L.	16	
	3 WH/YELL WAS WH/BRN						
	2 GRN. WAS YELL.						
	1 WH/GRN WAS WH/YELL.						
ISSUE	ITEM	CHANGED FROM	DATE	CH. NO.	DRAFTS	CHECKER	ENG. APP.
TOLERANCES		SCALE:					
ALL OTHERS	DEC. DIM. ±	DRILL, PUNCH, COMMERCIAL STOCK SIZES AND MANUFACTURERS TOLERANCES ARE NOT INCLUDED.					
	FRAC. DIM. ±						
	ANGULAR DIM. ±						

1	AP-104	GPT-40K		1-20-60
REQ. PER UNIT	MODEL	PROJECT NO.	ASSY. NO.	DATE
	USED ON			

	12		
X	11	BS 100	SOLDER, SOFT
X	10	PX 104-1-.022	INSULATION, SLEEVING #22
X	9	WL-100-7	WIRE, BUSS #22
2	8	RC42GF334J	RESISTOR, FIXED, COMP.
2	7	RC20GF104J	
2	6	RC42GF224J	
1	5	RC42GF684J	
2	4	RC42GF102J	
2	3	RC42GF470J	RESISTOR, FIXED, COMP.
2	2	TE-108-13	STANDOFF, 3/8 LG., 1/4 D
22	1	TE-109-3	TERMINAL
REQ. ITEM	PART NO.	DESCRIPTION	SYMBOL
1/8 THK.		THE TECHNICAL MATERIEL CORP. MAMARONECK, NEW YORK	
PHENOLIC		TERMINAL BOARD, RESISTOR	
MATERIAL WEIGHT PER PC.		(BIAS SUPPLY DRAWER)	
XXXP LAMINATE			
TYPE & TEMPER.		DRAWN ELEC. DES. APP. MECH. DES. APP.	
HEAT TREAT. SPEC.		CHECKED FINAL APPROVAL	
NATURAL		A-1817 C	
FINISH & SPEC. NO.			