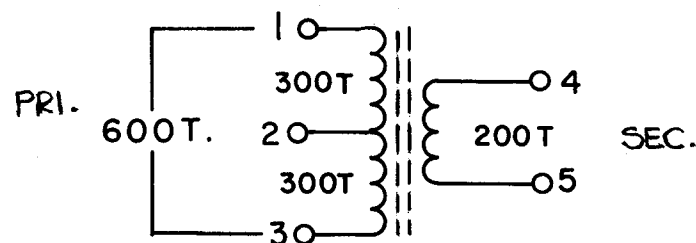


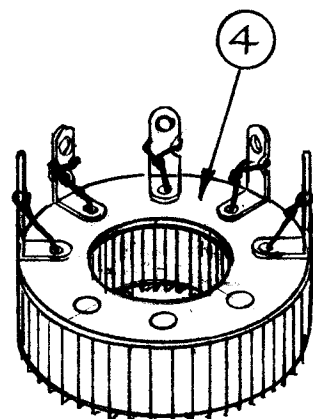
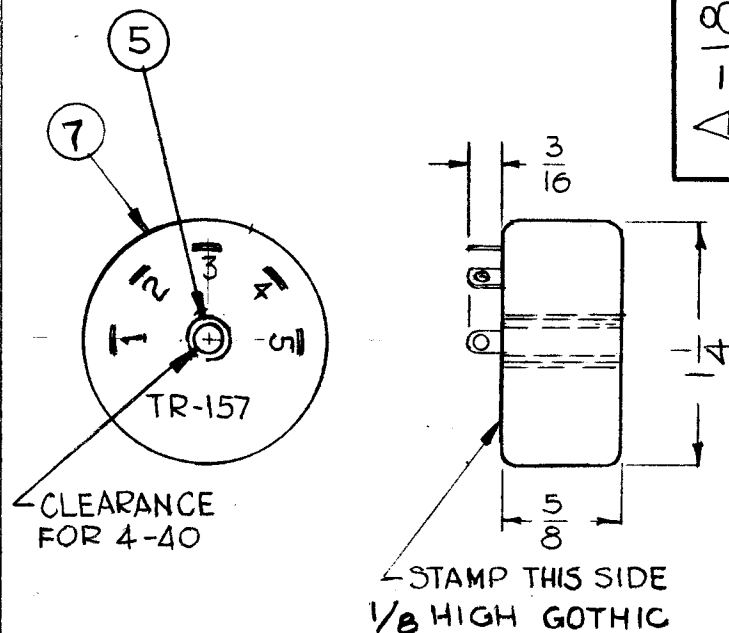
**WINDING DATA**

**PRIMARY-**  
WIND 600 TURNS ONTO CORE, WITH CENTER TAP AT 300th TURN.

**SECONDARY-**  
WIND 200 ADDITIONAL TURNS OVER PRIMARY WINDINGS.



**ASSEMBLY**

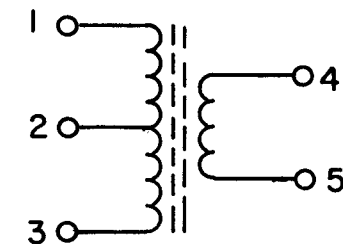


1. PLACE WOUND CORE INSIDE COIL FORM ASSEMBLY AND SOLDER LEADS TO BOTTOM OF TERMINALS.
2. POT ASSEMBLY WITH ITEM 7, BEING SURE THAT THE TOP OF THE TERMINALS PROTRUDE APPROXIMATELY 3/16 OF AN INCH.

A-1807

**REVISIONS**

SYM	DESCRIPTION	DATE	E.M.N. NO.	DRAFT	CHKD	APPD
B	REDRAWN & REVISED	9-12-63	9957	G.D.L	HJ	WJ
C	ITEM 6 DELETED (INS. SLEEVING)	9-6-72	20858	GE	HJ	WJ



**TEST DATA**

MEASURE WITH G.R. BRIDGE  
PRIMARY: 9-13 mh. Q=>5  
SECONDARY: 1.1 - 1.5 mh. Q=>2

**NOT TO BE RELEASED  
W/O AUTHORIZATION**

AUTH. BY: \_\_\_\_\_  
DATE: \_\_\_\_\_

REQ'D.	ITEM	PART NUMBER	DESCRIPTION	SYMBOL
X	7	GL-106	COMPOUND, PLASTIC	
/	6	DELETED		
1	5	TE-117-36	SPACER	
1	4	A-1327-5	INSULATOR, SUB ASSEMBLY	
1	3	BS-100	SOLDER, SOFT	
X	2	WI-123-32	WIRE, MAGNET, HEAVY #32	
1	1	CI-103-33	CORE	

**LIST OF MATERIAL**

MATERIAL	THE TECHNICAL MATERIEL CORP. MAMARONECK, NEW YORK			
FINISH	TITLE TR-157 ASSY TRANSFORMER, RF			
UNLESS OTHERWISE SPECIFIED DIMENSIONS ARE IN INCHES AND INCLUDE CHEMICALLY APPLIED OR PLATED FINISHES		DRAWN G.D.L	DATE 9-12-63	FINAL APPROVAL
DECIMALS .X ± .05 .XX ± .01 .XXX ± .005		CHECKED HJ	DATE 9-13-63	DATE
FRACTIONS ± 1/64 ANGLES ± 0° 30'		ELECT. DES.	DATE	
TOLERANCES		MECH. DES.	DATE	

1	AK-100	
Q'TY./UNIT	MODEL USED ON	ASS'Y. NO.
SCALE NONE	CODE	
THE CONTENTS OF THIS DRAWING ARE THE EXCLUSIVE PROPERTY OF THE TECHNICAL MATERIEL CORP. ITS UNAUTHORIZED USE OR REPRODUCTION IN WHOLE OR IN PART IS STRICTLY FORBIDDEN.		

**NOTES**