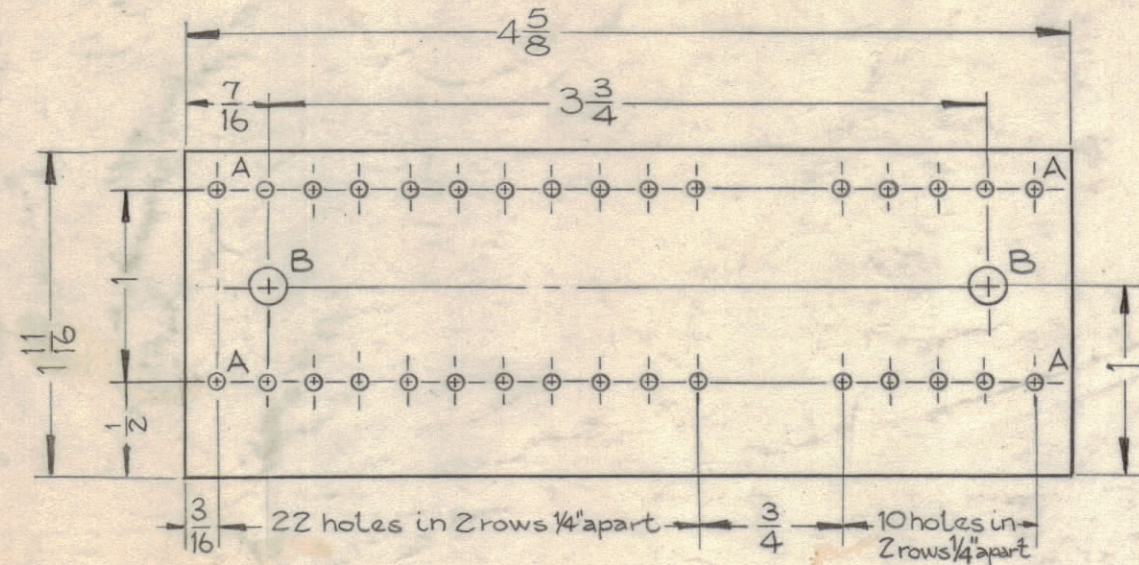


IF IT IS FOUND DESIRABLE TO CHANGE ANY TOLERANCE OR OTHER DETAIL SPECIFIED ON THIS DRAWING NOTIFY THE PURCHASER PROMPTLY.

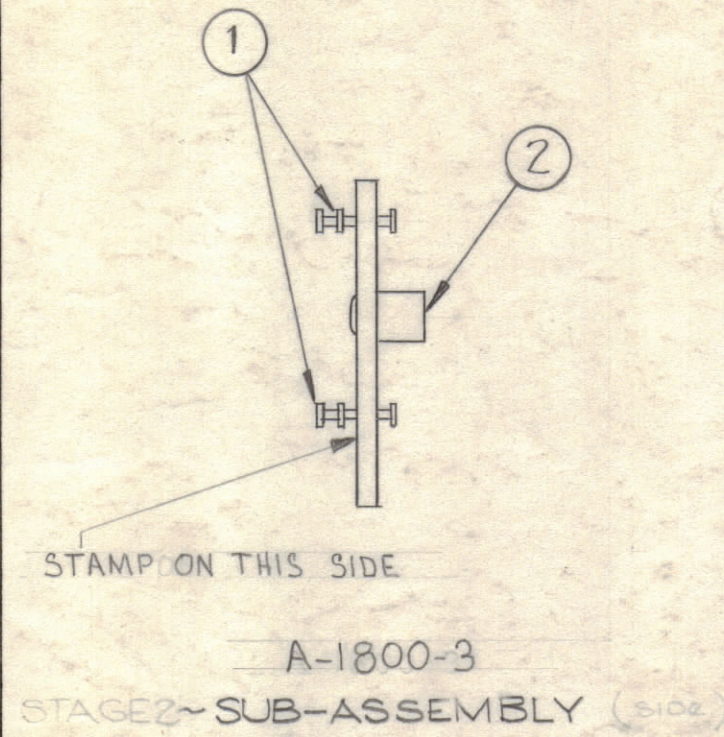
MAXIMUM ALLOWABLE TOLERANCES HAVE BEEN DETERMINED AND DEVIATIONS WILL BE CAUSE FOR REJECTION. REMOVE ALL BURRS AND SHARP EDGES.

HOLES
 A ~ 5/64 (.078) Dia. REQ'D. 32
 B ~ .189 Dia. 2



A-1800-1
 STAGE 1 ~ MACHINING (TOP)

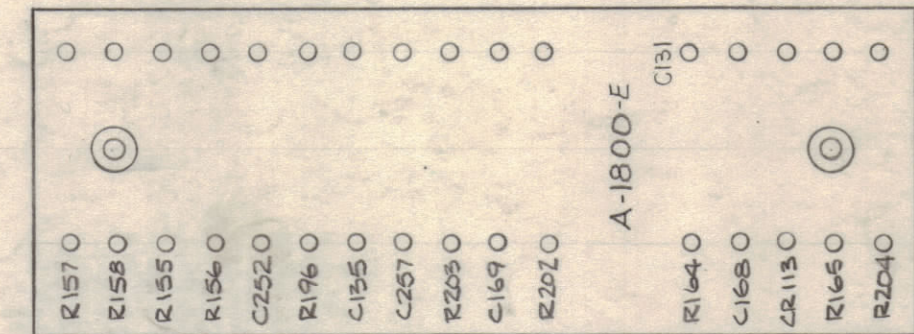
Material: 1/16 thick, Natural Phenolic, XXXP Laminated



A-1800-3
 STAGE 2 ~ SUB-ASSEMBLY (SIDE)

MARKING PROCESS: AS PER TMC SPECIFICATION S-727

LETTERING: 1/8 HIGH BLACK, GOTHIC LOCATED AS SHOWN.

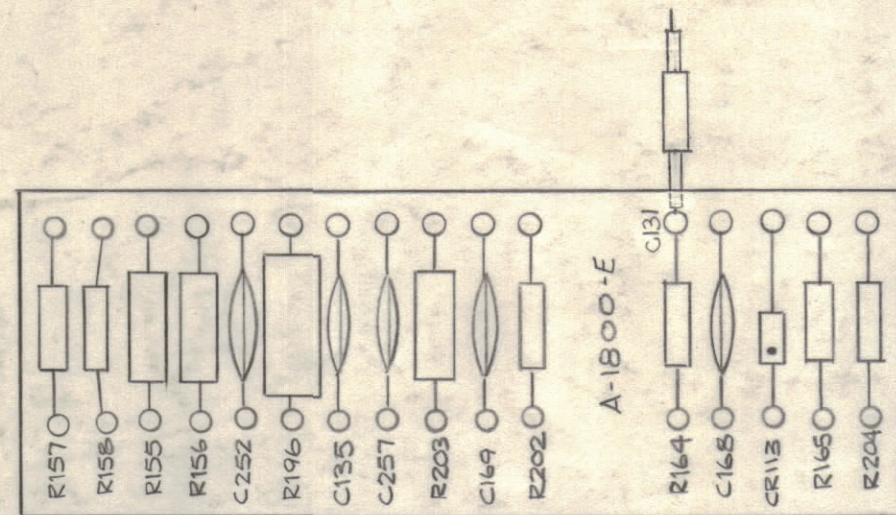


Stamp as Shown

A-1800-2
 STAGE 3 ~ STAMPING (TOP)

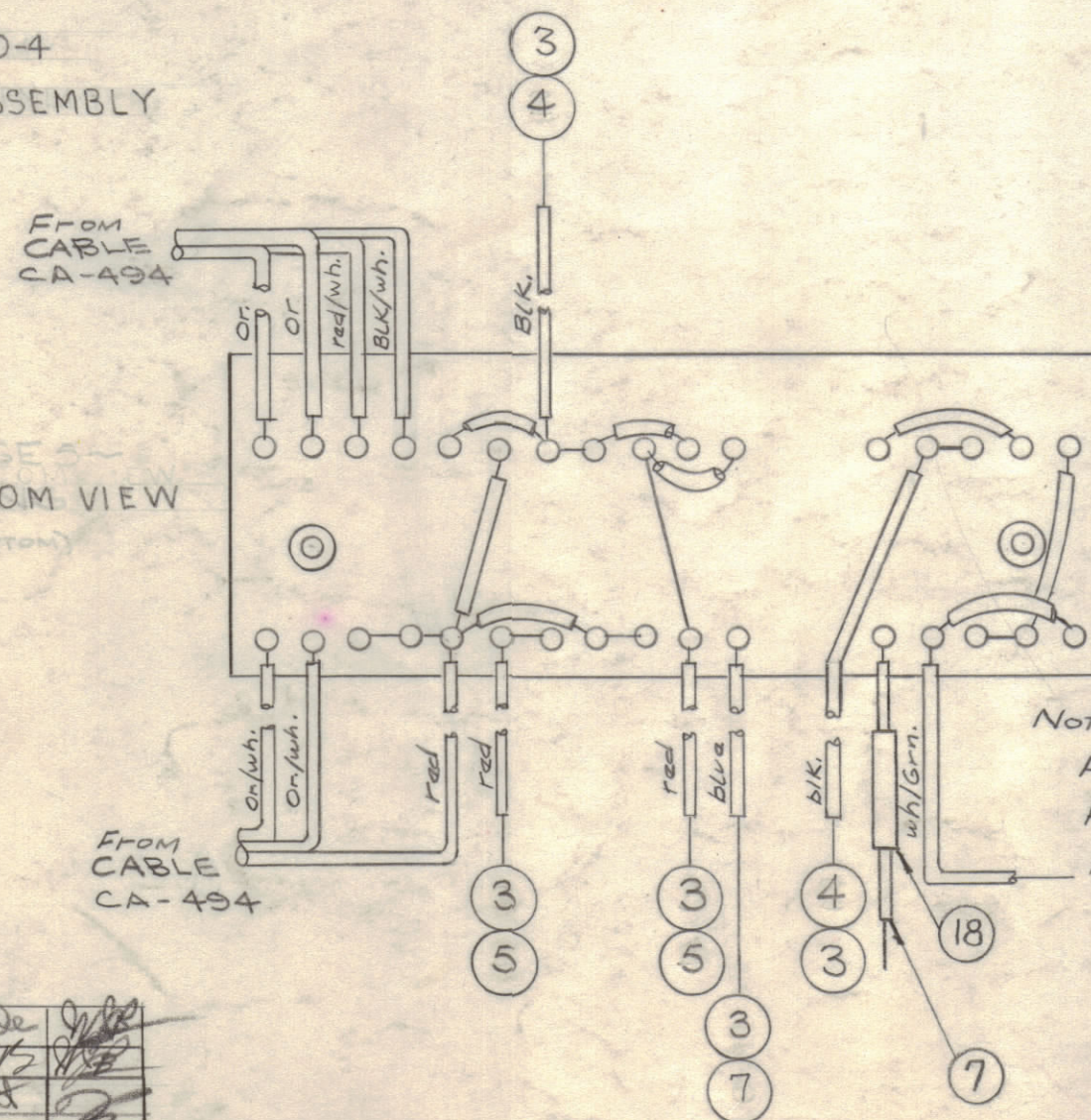
ALL Lettering 1/8 High Black Gothic.

~ STAGE 4 ~
 CONTOUR VIEW LAYOUT (TOP)



A-1800-4
 FINAL ASSEMBLY

~ STAGE 5 ~
 BOTTOM VIEW (BOTTOM)



Note:
 All Jumpers will be item 3.
 All Jumper Sleeving will be item 4.
 From CABLE CA-494

A-1800 E

1	18	CM15C511J	CAPACITOR, FIXED, MICA.	C131
X	17	BS-100	SOLDER, SOFT	
2	16	RC30GF223K	RESISTOR, FIXED, COMP.	R155 R156
2	15	RC20GF123K	RESISTOR, FIXED, COMP.	R157 R158
1	14	1N303	DIODE, XTAL	CR113
1	13	RC426F103K	RESISTOR, FIXED, COMP.	R196
1	12	RC30GF123K		R203
1	11	RC20GF106K		R204
1	10	RC20GF473K		R202
2	9	RC20GF123K	RESISTOR, FIXED, COMP.	R104 R165
5	8	CC-100-16	CAPACITOR, FIXED	
X	7	PX-104-6-022	INSULATION, SLEEVING	Blk
X	6	PX-104-4-022		Grn.
X	5	PX-104-3-022		Red
X	4	PX-104-1-022	INSULATION, SLEEVING	Blk.
2	2	TE-108-1	STANDOFF	
34	1	TE-168-4B	TERMINAL, MINIATURE	

E	1	ITEM (18) ADDED, C131	11-14-59	7666	GF	File	File
D	1	ITEM (10) WAS RC20GF823K	7-12-61	6930	GF	File	File
C	1	Item (10) WAS RC20GF224K	11-11-61	5843	RU	File	File
B	4	A-1800-4 WAS STAGE 4+5					
B	3	A-1800-2 WAS STAGE 3					
B	2	A-1800-3 WAS STAGE 2	1/8/60	1737	1/9	File	File
B	1	A-1800-1 WAS STAGE 1					
A	1/1/59	R155, 156 WERE RC30GF123K	1/31/59	1603	1/9	File	File

ISSUE	ITEM	CHANGED FROM	DATE	CH. NO.	DRAFTS	CHECKER	ENG. APP.
TOLERANCES		SCALE:					
ALL OTHERS	DEC. DIM. ±	DRILL, PUNCH, COMMERCIAL STOCK SIZES AND MANUFACTURERS TOLERANCES ARE NOT INCLUDED.					
	FRAC. DIM. ±						
	ANGULAR DIM. ±						

1	SBE-3	AO-101	11-10-59
REQ. PER UNIT	MODEL	PROJECT NO.	ASSY. NO.
			DATE
	USED ON		

1/16 thk.		THE TECHNICAL MATERIEL CORP. MAMARONECK, NEW YORK	
STOCK SIZE		R.F. CHASSIS TERMINAL	
PHENOLIC		BOARD ASS'Y. (SBE)	
MATERIAL		XXXP LAMINATE	
WEIGHT PER PC.		D. J. Mancuso	
TYPE & TEMPER		DRAWN	
		ELEC. DES. APP.	
		MECH. DES. APP.	
HEAT TREAT. SPEC.		CHECKED	
NATURAL		FINAL APPROVAL	
FINISH & SPEC. NO.		A-1800 E	