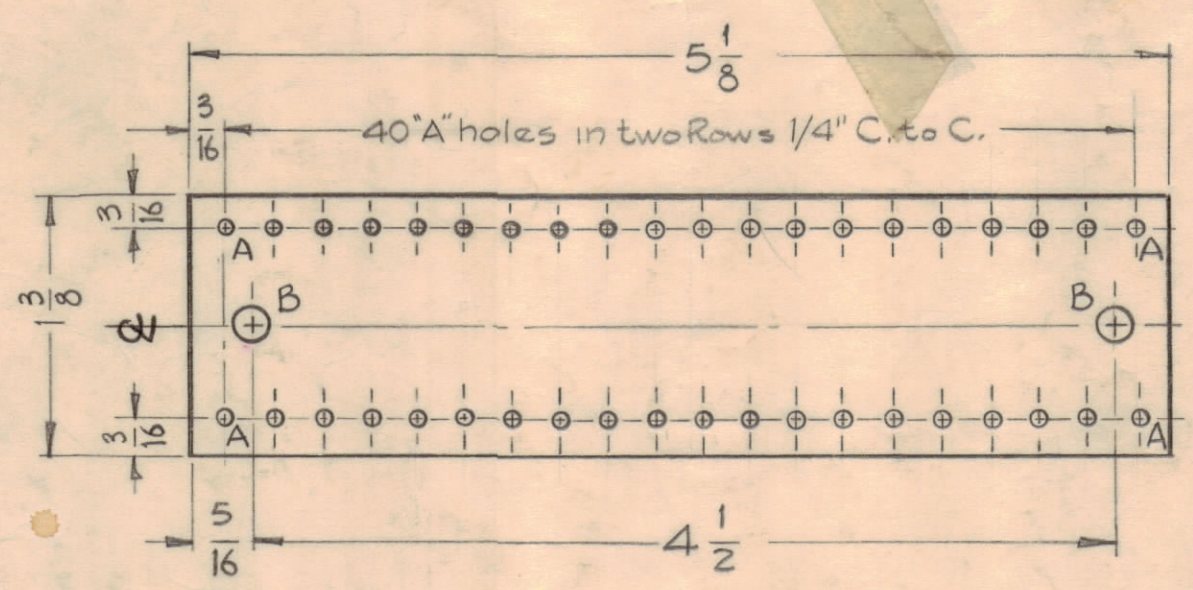
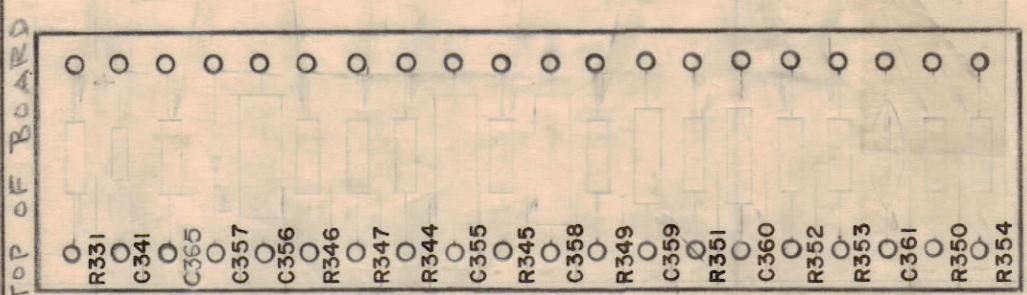


HOLES REQ'D.
 A ~ 5/64 (.078) DIA. 40
 B ~ #12 Dr. (.189) DIA. 2



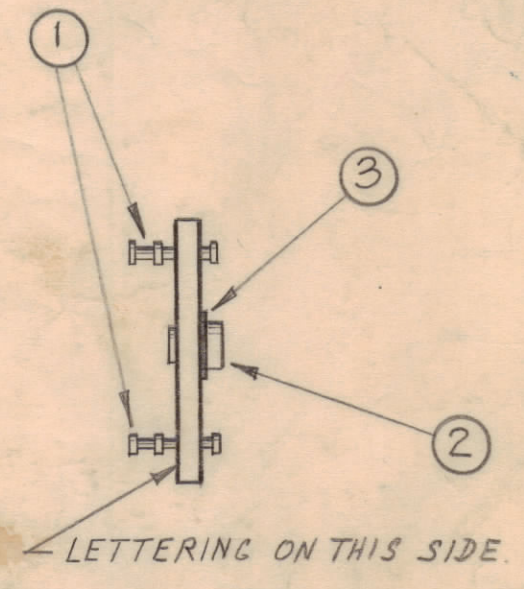
MACHINING A-1792-1 Material - 1/16 Phenolic XXXP

MARKING PROCESS: AS PER TMC SPECIFICATION S-727



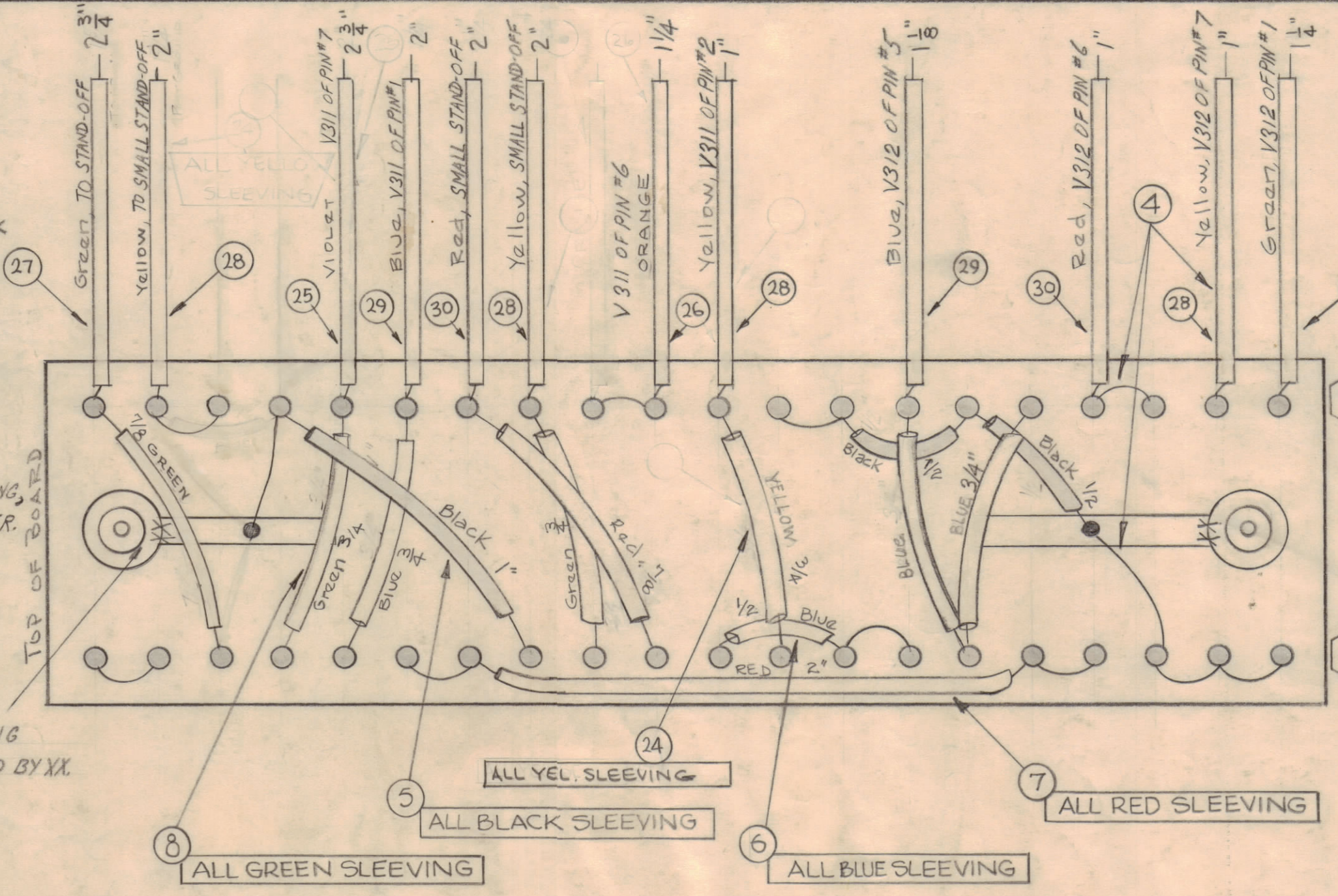
STAMPING ASSEMBLY A-1792-2

NOTE: ALL LETTERING 3/32 HIGH BLACK GOTHIC.



SUB-ASSEMBLY A-1792-3

NOTE: SOLDER ALL AREAS MARKED WITH A BLACK SPOT.



ALL JUMPERS TO BE ITEM 4 (WL-100-7).

ALL LENGTHS DENOTE SLEEVING, BUSS WIRE IS 1/2 INCH LONGER.

NOTE: SOFT SOLDER ALL MOUNTING STAND-OFFS TO LUGS INDICATED BY XX.

ALL GREEN SLEEVING
 ALL BLACK SLEEVING
 ALL BLUE SLEEVING
 ALL RED SLEEVING

* DENOTES TOP & BOTTOM FOR STAGING SHEETS ONLY.

REQ.	ITEM	PART NO.	DESCRIPTION	SYMBOL
X	31	PX-100-1-085	INSULATION, SLEEVING	BLACK
X	30	LWC24(7)U2	WIRE, INSULATED	RED
X	29	6		BLUE
X	28	4		YELLOW
X	27	5		GREEN
X	26	3		ORANGE
X	25	LWC24(7)U7	WIRE, INSULATED	VIOLET
X	24	PX-104-2-022	SLEEVING, INSULATED	YELLOW
X	23	BS-100	SOLDER, SOFT	
1	22	CC-100-9	CAPACITOR, DISK	C357
1	21	CX-105	CAPACITOR, TANTALUM	C341
2	20	CM20F102G03	CAPACITOR, FIXED, MICA	C360
1	19	CC-100-16	CAPACITOR, DISK	C361
3	18	CN106C104K	CAPACITOR, FIXED, (METAL CASE)	C355-356-358
1	17	RC206F332J	RESISTOR, CARBON, FIXED	R331
1	16	CN112A254M1	CAPACITOR	C365
1	15	RC206F224J	RESISTOR, CARBON, FIXED	R346
1	14	563J		R347
1	13	103J		R344
1	12	473J		R345
1	11	475J		R349
1	10	105J		R352
4	9	RC206F104J	RESISTOR, CARBON, FIXED	R350-353-354-351
X	8	PX-104-4-022	SLEEVING, INSULATION	GREEN
X	7	PX-104-3-022		RED
X	6	PX-104-6-022		BLUE
X	5	PX-104-1-022	SLEEVING, INSULATED	BLACK
X	4	WL-100-7	WIRE, BUSS-BAR, TINNED	
2	3	TE-116-3	SOLDER, LUG	
2	2	TE-108-7	STANDOFF, RIVET TYPE	
40	1	TE-168-4B	TERMINAL, MINIATURE	

* NOTE: ITEM 31 TO BE PLACED OVER ITEM 21 COVERING CASE COMPLETELY.

A-1792-4 WIRING FINAL ASSY

ISSUE	ZONE	DESCRIPTION	DATE	CH. NO.	DRAFTS	CHECKER	ENG. APP.
L		CHG'D RES TOL FR "K" TO "J". DELE DEC. PTS ON P/N'S. REVERSE -34-2 ASSY. NO. IT 20 WAS CM20B102K	11-29-66	1/30	RME		
K	G6	CENTER LINE ADDED TO A1792 (ERROR)	4-13-65	13883			
J	#	ITEM 26 WAS PX104-8-022 ITEMS 27 TO 31 ADDED; IT 25 WAS PX104-9-022	9/18/64	12390	SRG		
H	D2	ITEM 18 CN106C104K WAS CN106D104K	1/22/63	10436			
G	F	ON STAGE 4, SLEEVING LENGTHS CLARIFIED	2-12-63	8211			

REQ PER UNIT	MODEL	SECTION	ASSY. NO.	DATE
1	CMO	HFL		4-11-60

THE TECHNICAL MATERIEL CORP. MAMARONECK, NEW YORK			
STOCK SIZE			
MATERIAL			
TYPE & TEMPER			
HEAT TREAT. SPEC.			
FINISH & SPEC. NO.			
DRAWN		MECH. DES. APP.	
CHECKED		FINAL APPROVAL	
A.K.F.		A1792	