

IF IT IS FOUND DESIRABLE TO CHANGE ANY TOLERANCE OR OTHER DETAIL SPECIFIED ON THIS DRAWING NOTIFY THE PURCHASER PROMPTLY.

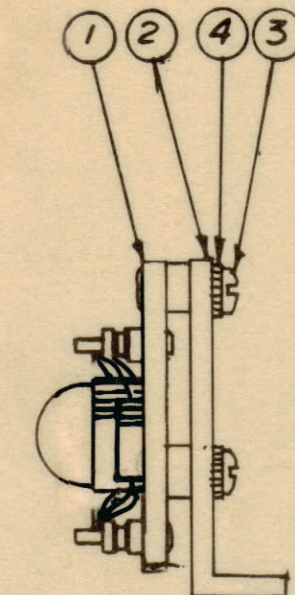
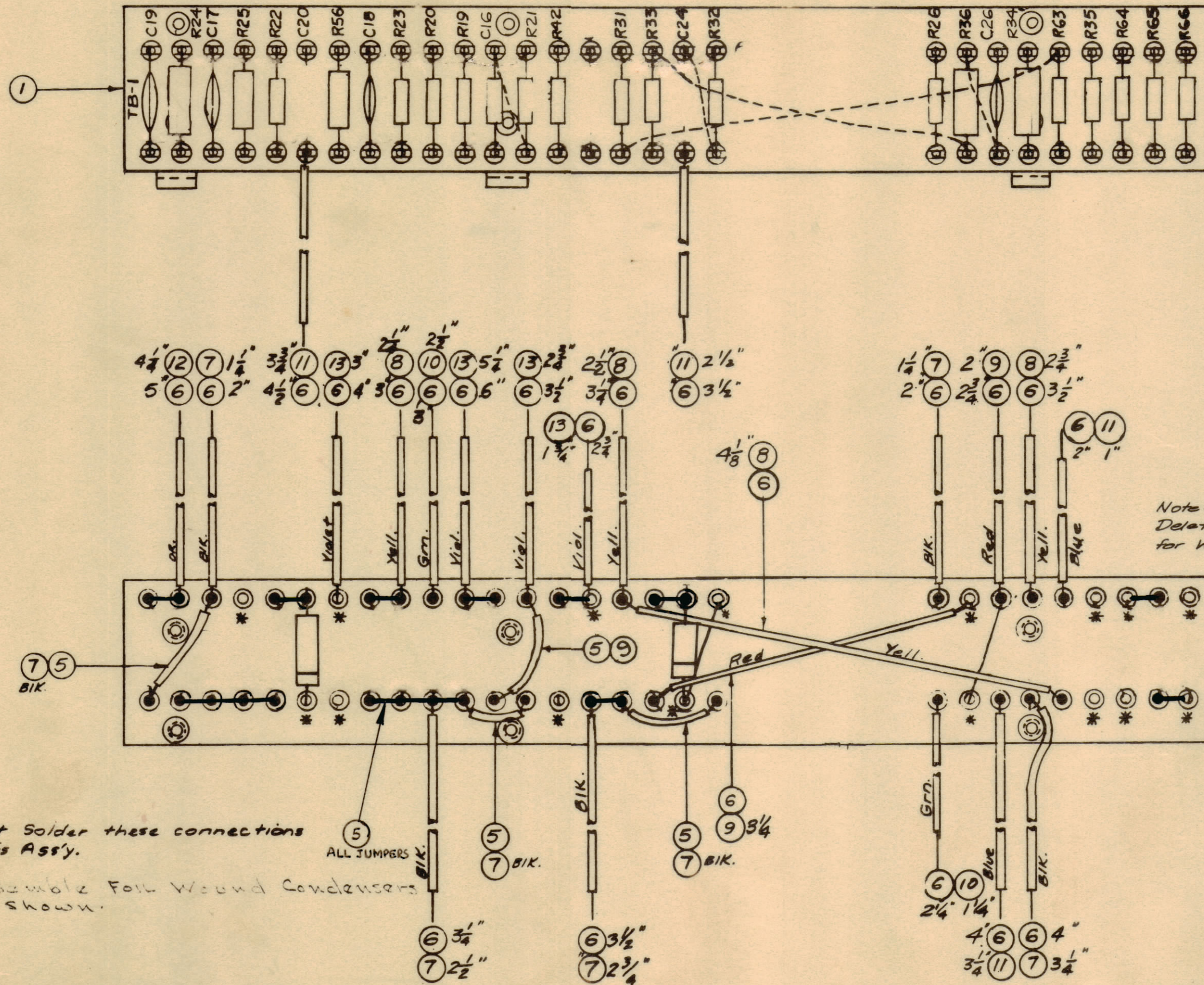
MAXIMUM ALLOWABLE TOLERANCES HAVE BEEN DETERMINED AND DEVIATIONS WILL BE CAUSE FOR REJECTION. REMOVE ALL BURRS AND SHARP EDGES

NOTICE TO PERSONS RECEIVING THIS DRAWING

THE TECHNICAL MATERIEL CORPORATION claims proprietary right in the material disclosed hereon. This drawing is issued in confidence for engineering information only and may not be reworked or used to manufacture any type shown hereon without permission from THE TECHNICAL MATERIEL CORPORATION to the user. This drawing is loaned for mutual assistance and is subject to recall at any time.

Property of:
THE TECHNICAL MATERIEL CORPORATION
MAMARONECK, NEW YORK

Stamping to be 1/8" high black Gothic. Stamp before ass'y. of components.



2	36	CN-100-1	Capacitor, Fixed (.01)	C20 C24
1	35	RC42GF563K	Resistor, Fixed, Comp.	R56
X	34	BS-100	Solder, Soft	
1	33	RC20GF272K	Resistor, Fixed, Comp.	R65
1	32	RC20GF473K		R63
2	31	RC20GF681K		R66 R64
1	30	RC20GF392K		R35
1	29	RC42GF561K		R34
1	28	RC20GF223K		R42
1	27	RC20GF474K		R32
-	26	DELETED		-
-	25	DELETED		-
1	24	RC20GF123K		R26
1	23	RC32GF103K		R25
1	22	RC42GF473K		R24
1	21	RC20GF121K		R23

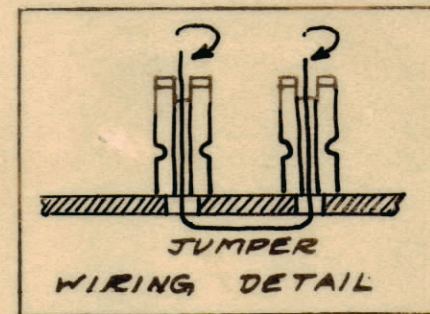
A-1791 B

3	20	RC20GF104K		R20, 22 33
1	19	RC20GF391K		R31
2	18	RC20GF203J	Resistor, Fixed, Comp.	R19 R21
4	16	CC-100-16	Capacitor, Fixed, Ceramic	
1	15	RC32GF333K	Resistor, Fixed, Comp.	R36
1	14	CC26SL820J	Capacitor, Fixed, Ceramic	C16
12 3/4	13	PX-104-9-.034	Insulation, Sleeving (Size 20)	Violet
4 1/4	12	-8-		Orange
10 1/2	11	-8-		Blue
3 3/4	10	-4-		Green
5 1/4	9	-3-		Red
11 1/4	8	-2-		Yellow
14 1/2	7	PX-104-1-.034	Insulation, Sleeving (Size 20)	Black
X	6	WL-100-7	Wire, Buss (Size 22)	
X	5	WL-100-8	Wire, Buss (Size 24)	
6	4	LWE06MRC	Lockwasher, Ext.	
6	3	SCBS06320C6	Screw, Machine	
3	2	MS-1321	Bracket, Angle, T.B.	
1	1	A-1571	Terminal Board No. 1 Sub-Ass'y	

REQ. ITEM	PART NO.	DESCRIPTION	SYMBOL
THE TECHNICAL MATERIEL CORP. MAMARONECK, NEW YORK			
STOCK SIZE			
TERMINAL BOARD NO. 1			
MATERIAL			
WEIGHT PER PC.			
FINAL ASS'Y & STAMPING			
TYPE & TEMPER			
HEAT TREAT. SPEC.			
FINISH & SPEC. NO.			

* = Do not solder these connections on this Ass'y.

NOTE: Assemble foil wound condensers as shown.



B	2	JUMPERS MOVED FR. TOP TO BOT. JUMP. WIRING & COMP. DETAIL REV.	11.10.64	12840	WJB		
A	1	ITEM (23) WAS RC20GF103K ITEM (15) WAS RC30GF333K	8-24-60	2862	RU	JOB	
ISSUE	ITEM	CHANGED FROM	DATE	DN. NO.	DRAFTS	CHECKER	ENG. APP.

TOLERANCES		SCALE:
ALL OTHERS	DEC. DIM. ± FRAC. DIM. ± ANGULAR DIM. ±	DRILL PUNCH, COMMERCIAL STOCK SIZES AND MANUFACTURERS TOLERANCES ARE NOT INCLUDED.

1	MSR-3-2	PROJECT NO.	10-26-59
REQ. PER UNIT	MODEL	ASSY. NO.	DATE
USED ON			