

IF IT IS FOUND DESIRABLE TO CHANGE ANY TOLERANCE OR OTHER DETAIL SPECIFIED ON THIS DRAWING NOTIFY THE PURCHASER IMMEDIATELY.
 MAXIMUM ALLOWABLE TOLERANCES HAVE BEEN DETERMINED AND DEVIATIONS WILL BE CAUSE FOR REJECTION.
 REMOVE ALL BURRS AND SHARP EDGES.

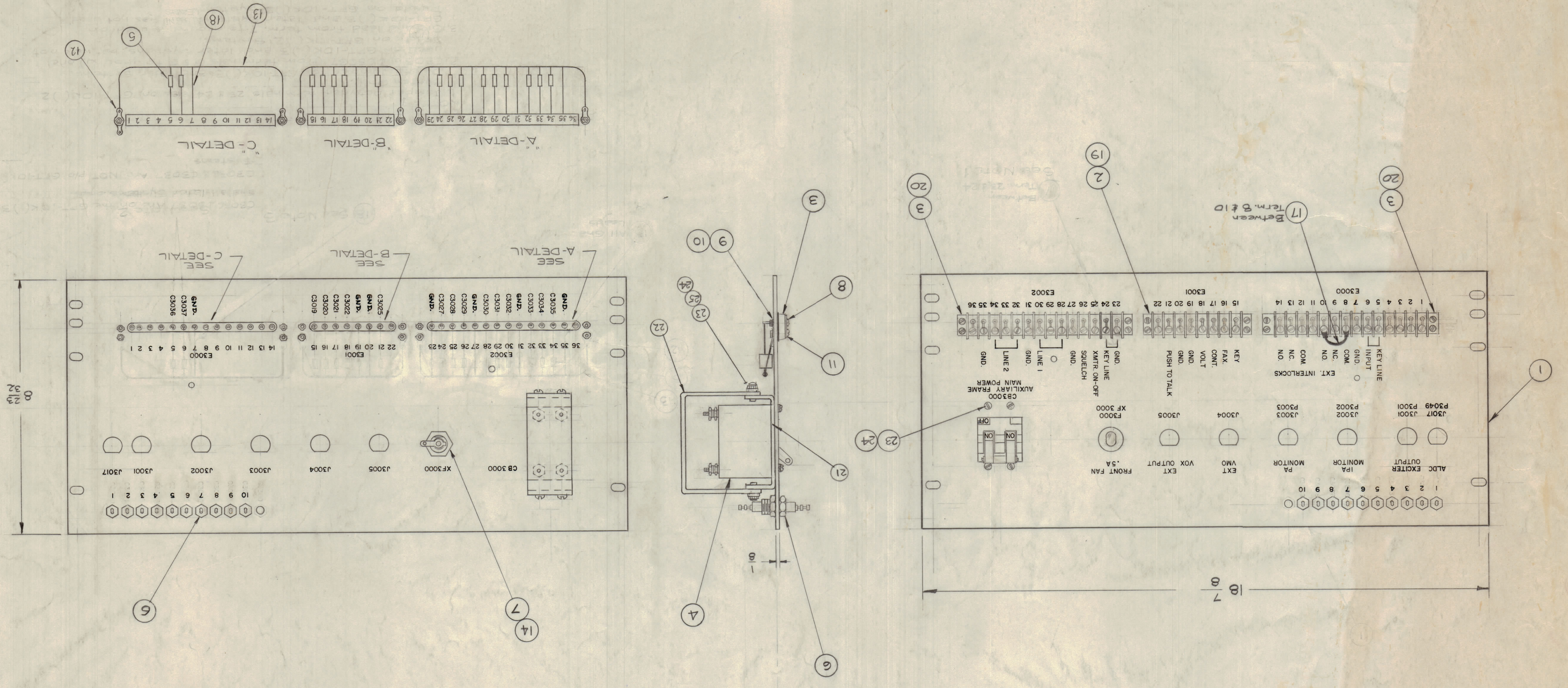
NOTE: TO PERSONS RECEIVING THIS DRAWING
 THE TECHNICAL MATERIAL CORPORATION
 PROPRIETARY RIGHT IN THE MATERIAL DISCLOSED HEREON.
 THIS DRAWING IS ISSUED IN CONFIDENCE OR OTHERWISE PROPRIETARY AND MAY NOT BE REPRODUCED OR USED FOR MANUFACTURE OF ANYTHING WITHOUT THE WRITTEN PERMISSION OF THE TECHNICAL MATERIAL CORPORATION.
 THE USER OF THIS DRAWING IS LOCATED FOR MUTUAL ASSISTANCE AND IS SUBJECT TO RECALL AT ANY TIME.
 PROPERTY OF:
 THE TECHNICAL MATERIAL CORPORATION
 MAMARONECK, NEW YORK

ISSUE ITEM	TOLERANCES		
	CHANGED FROM	DATE	BY
A	1. DIMS. NO. WAS 11-13-59	11-13-59	[Signature]
B	2. ITEM 1 WAS 11-13-59	11-13-59	[Signature]
C	1. ITEM 2 WAS 11-13-59	11-13-59	[Signature]
D	1. ITEM 1 WAS 11-13-59	11-13-59	[Signature]
E	1. ITEM 1 WAS 11-13-59	11-13-59	[Signature]
F	1. ITEM 1 WAS 11-13-59	11-13-59	[Signature]

REQ. PER UNIT	1
MODEL	GPT-10KLT
PROJECT NO.	AX-806
ASBY. NO.	
DATE	11-13-59
FINISH & SPEC. NO.	

REQ. ITEM	PART NO.	DESCRIPTION	SYMBOL
1	LD60/M51847	PANEL, CENTER SHIELD	
2	TM-100-8	TERM. STRIP, BARRIER TYPE	F3001
3	TM-100-14	TERM. STRIP, BARRIER TYPE	F3002
4	GW-251	BREAKER, CIRCUIT	C3000
5	CM20B102K	CAPACITOR, FIXED, MICA	
6	TE-114-2	TERMINAL, FEED THRU	
7	FU-102-5	FUSE	F3003
8	SCBP04405N10	SCREW, MACHINE	
9	LW604MRN	LOCKWASHER	
10	NTH-04408N6	NUT, HEX	
11	MS-154-1	STRADDLE PLATE	
12	TE-104-1	TERMINAL, LOCKING	
13	WL-100-4	WIRE, BUS	
14	FH-104-3	HOLDER, FUSE	
15	BS-100	SOLDER, SOFT	
16	CA409-32-2.00	Cable Assy., Jumper	
17	WL-103-2	Shield, Flexible, 1/8"	X
18	PX-337-5	Insulator, Term. Strip (5 term)	
19	PX-337-14	Insulator, Term. Strip (14 term)	
20	MS-442-4	BRACKET, SHIELD MTC.	
21	MS-442-5	SHIELD, ELECTRIC PROTECT	
22	SCRP06328NL	SCREW, MACHINE	
23	LW606MRN	WASH, LK, EXT	
24	FW06HBN	WASH, FLAT	

A-1751 F



A-1751 F