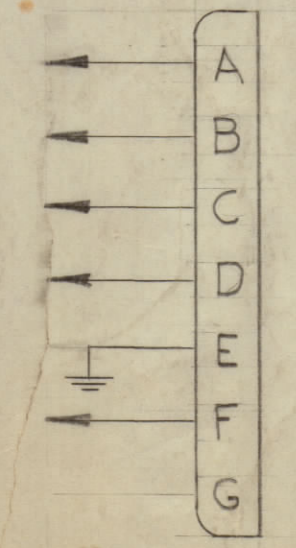
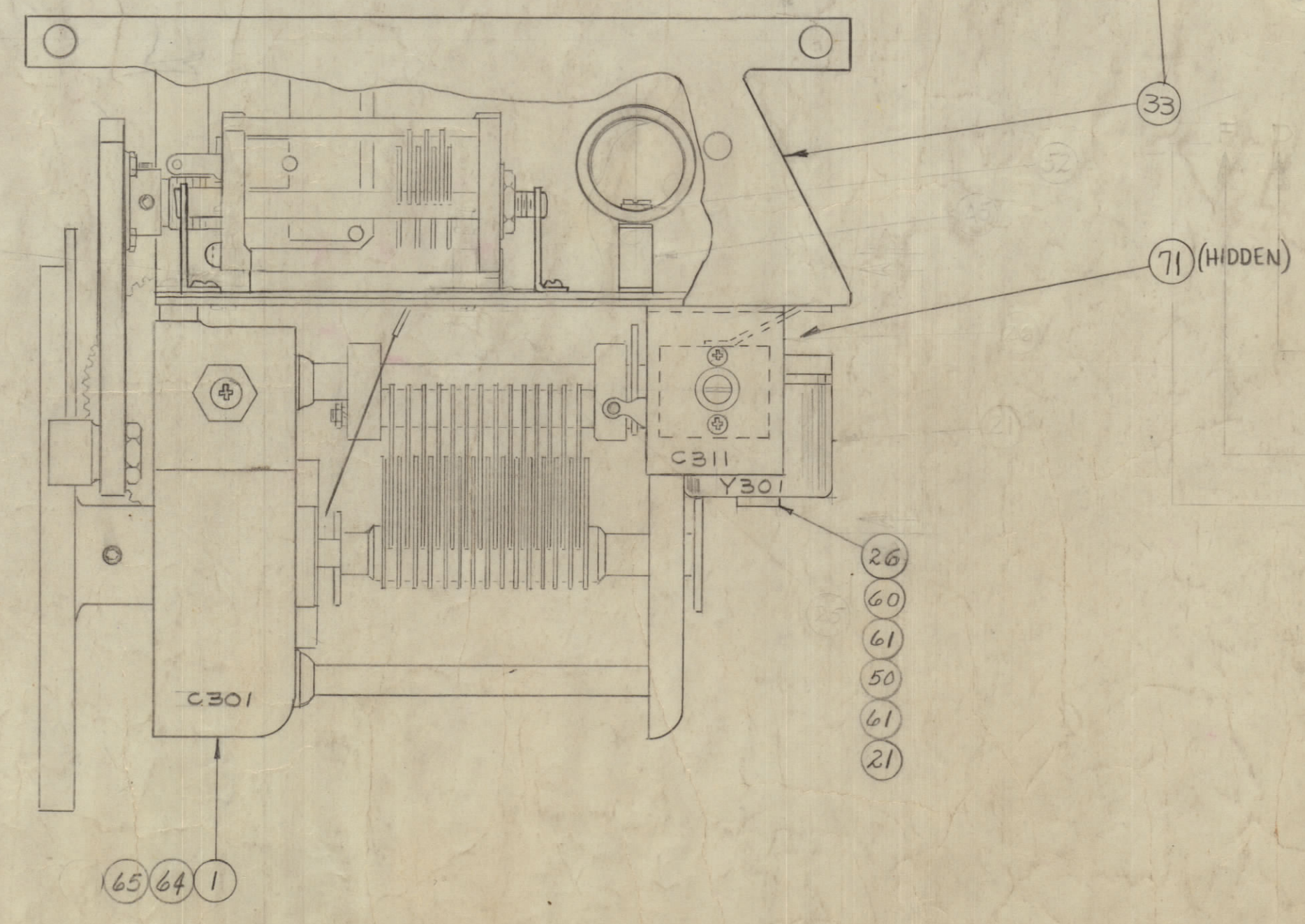
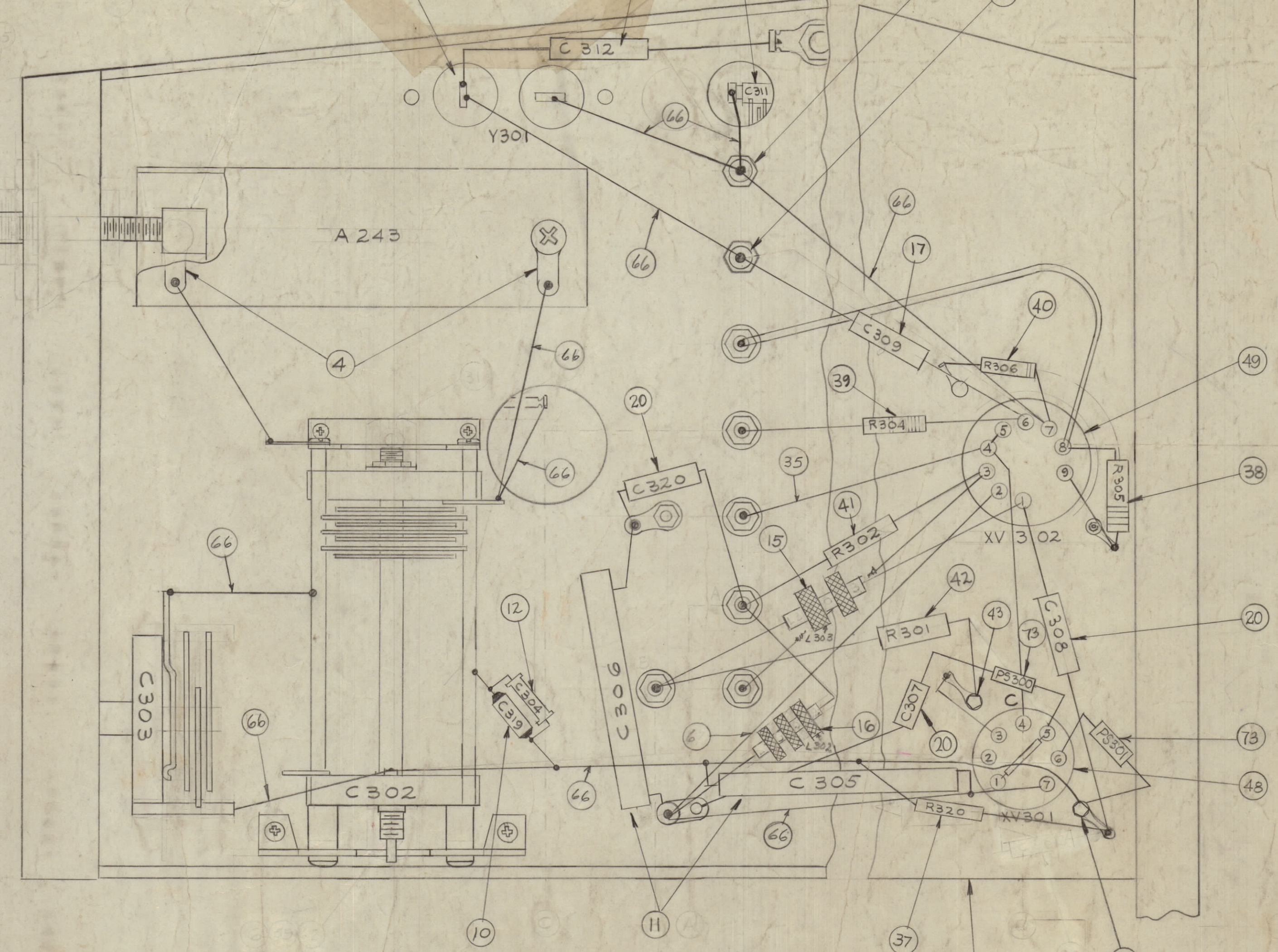
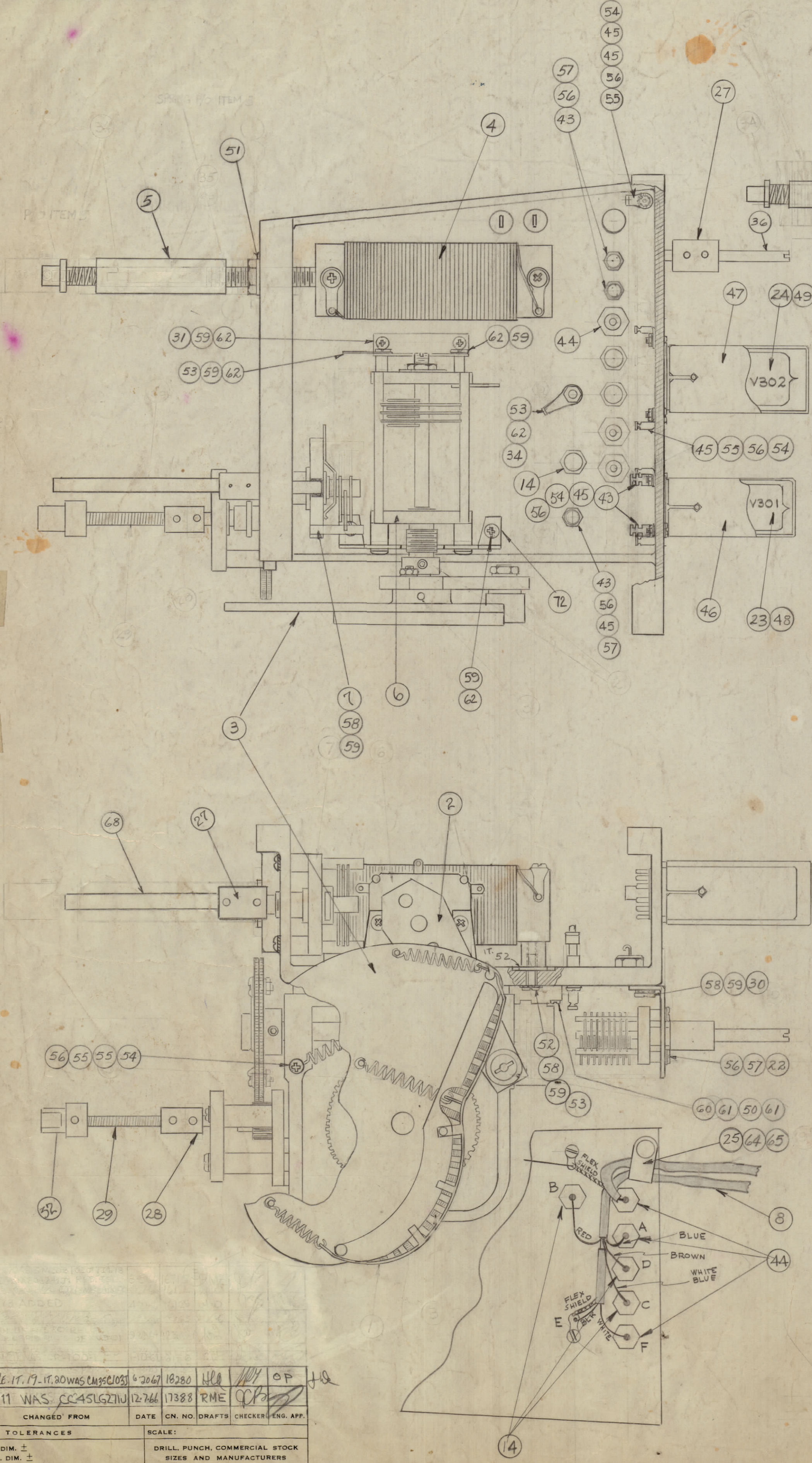


IF IT IS FOUND DESIRABLE TO CHANGE ANY TOLERANCE OR OTHER DETAIL SPECIFIED ON THIS DRAWING NOTIFY THE PURCHASER PROMPTLY.
 MAXIMUM ALLOWABLE TOLERANCES HAVE BEEN DETERMINED AND DEVIATIONS WILL BE CAUSE FOR REJECTION.
 REMOVE ALL BURRS AND SHARP EDGES



P302
 MS3106B16S-1P

REQ. ITEM	PART NO.	DESCRIPTION	SYMBOL
2	73	AX163	SUPPRESSOR, PARASITIC
1	72	MS-2337	BRACKET, CONDENSER
1	71	MS-2551	Bracket, Var. Cap., Support
X	70	BS-100	SOLDER, SOFT
	69	DELETED	
1	68	PX-233	OSC. COND. EXT. SHAFT
	67	DELETED	
X	66	WL-100-5	WIRE, BUSS (SIZE 18)
4	65	LWE08MRN	LOCKWASHER, EXT
4	64	SCBP082BUB	SCREW, MACHINE
	63	DELETED	
7	62	SCBP0632BUB	SCREW, MACHINE
4	61	WA-109-18	WASHER, FIBER
2	60	SCBP0440BUB	SCREW, MACHINE
12	59	LWE06MRN	LOCKWASHER, EXT.
5	58	SCBP0632BNG	SCREW, MACHINE
6	57	SCBP0442BUB	SCREW, MACHINE
12	56	LWE04MRN	LOCKWASHER, EXT
5	55	NTH0440BNG	NUT, HEX.
5	54	SCBP0440BNG	SCREW, MACHINE
3	53	TE-104-2	TERMINAL, LOCKING
2	52	WA-120	WASHER, FIBRE
1	51	LWI37MRN	LOCKWASHER, INT.
1	50	TS-105-1	SOCKET, CRYSTAL
1	49	TS-103P01	SOCKET, TUBE
1	48	TS-102P01	SOCKET, TUBE
1	47	TS103V02	SHIELD, TUBE
1	46	TS102V02	SHIELD, TUBE
7	45	TE-149-120	LOG, SOLDER
3	44	TE-114-2	TERMINAL, FEED-THRU, INSULATED
5	43	TE-102-2	TERMINAL, TURRET
1	42	RC32GF392J	RESISTOR, FIXED COMPOSITION
1	41	RC32GF102J	
1	40	RC20GF474J	
1	39	RC20GF473J	
1	38	RC20GF472J	
1	37	RC20GF223J	RESISTOR, FIXED COMPOSITION
1	36	PX-259	SHAFT, OSC. COND. EXT.
X	35	WL100-7	WIRE, BUSS (SIZE 22)
1	34	NTH0632BUB	NUT, HEX
1	33	PM-501	CHASSIS, OSC. MACHING (LD-976)
1	32	PM-319	COUPLING, MAIN SHAFT
1	31	MS-1582	BRACKET, CONDENSER
1	30	MS-309	BRACKET, OSC. CONDENSER
1	29	MC-123	COUPLING, FLEXIBLE SHAFT
1	28	MC-107	COUPLING
2	27	MC-102	COUPLING, SWITCH SHAFT
1	26	CU-106	CLAMP, CRYSTAL
1	25	CU-102-5N	CLAMP, "G" TYPE
1	24	12AU7	TUBE, ELECTRON
1	23	6AB4	TUBE, ELECTRON
1	22	CT-103-1	CAPACITOR, VARIABLE
1	21	CR-100	CRYSTAL UNIT
2	20	CM112F103J5S	CAPACITOR, FIXED, MICA
	19	DELETED	
1	18	CM20F241G03	CAPACITOR, FIXED, MICA
1	17	CM20F102G03	CAPACITOR, FIXED, MICA
1	16	CL-101-2	CHOKE, R.F.
1	15	CL-100-5	CHOKE, R.F.
3	14	CK-70A102M	CAPACITOR, FEED-THRU, CERAMIC
	13	DELETED	
1	12	CC20RH070C	CAPACITOR, FIXED, CERAMIC
2	11	CC114L6271U	CAPACITOR, FIXED, CERAMIC
1	10	CC-102-5	CAPACITOR, FIXED, CERAMIC
1	9	CA-282	CABLE, R.F.
1	8	CA-281	CABLE, MO. POWER
1	7	CB-121	CAPACITOR, VARIABLE
1	6	CB-105	CAPACITOR, VARIABLE
1	5	A-3127	TUNING SLUG ASSY.
1	4	A-243	COIL ASS'Y.
1	3	A-584	CAM, SUB-ASS'Y
1	2	A-583	CAM FOLLOWER ARM SUB ASS'Y
1	1	A-100	SUB-ASSEMBLY CAP. VAR. AIR

P	DELETED 17-11-20 WAS C45103 2067 18280 HLD	OP	JL
N	17-11 WAS C45103 12766 17388 RME		
ISSUE ITEM	CHANGED FROM	DATE	CH. NO. DRAFTS
	TOLERANCES		CHECKER
	SCALE:		ENG. APP.
ALL OTHERS	DEC. DIM. ±	DRILL, PUNCH, COMMERCIAL STOCK	
	FRAC. DIM. ±	SIZES AND MANUFACTURERS	
	ANGULAR DIM. ±	TOLERANCES ARE NOT INCLUDED.	

1	A0-100	PROJECT NO.	ASSY. NO.	DATE
REQ. PER UNIT	MODEL	USED ON		