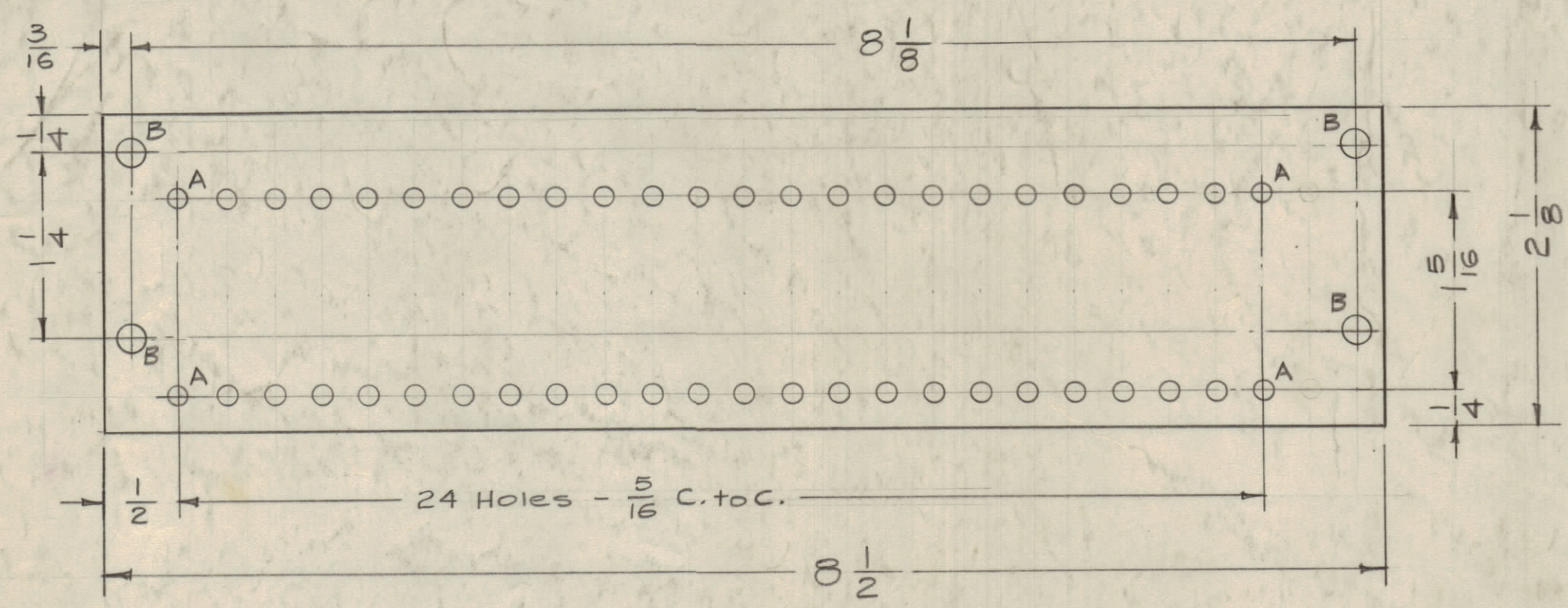


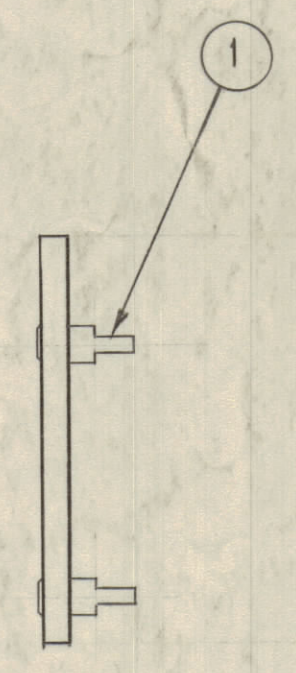
IF IT IS FOUND DESIRABLE TO CHANGE ANY TOLERANCE OR OTHER DETAIL SPECIFIED ON THIS DRAWING NOTIFY THE PURCHASER PROMPTLY.
 MAXIMUM ALLOWABLE TOLERANCES HAVE BEEN DETERMINED AND DEVIATIONS WILL BE CAUSE FOR REJECTION. REMOVE ALL BURRS AND SHARP EDGES



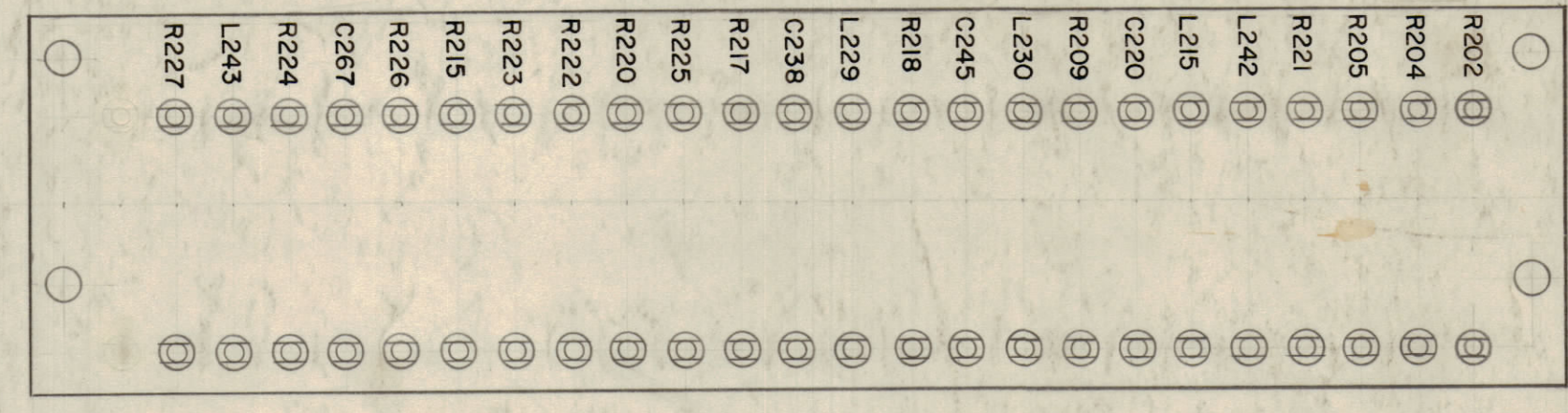
MATERIAL - 1/8 THK. XXXP Phenolic, Natural

A - #32 Dr. (.116 D) 48 Req.
 B - 5/16 (.187) D. 4 Req.

STAGE 1 MACHINING

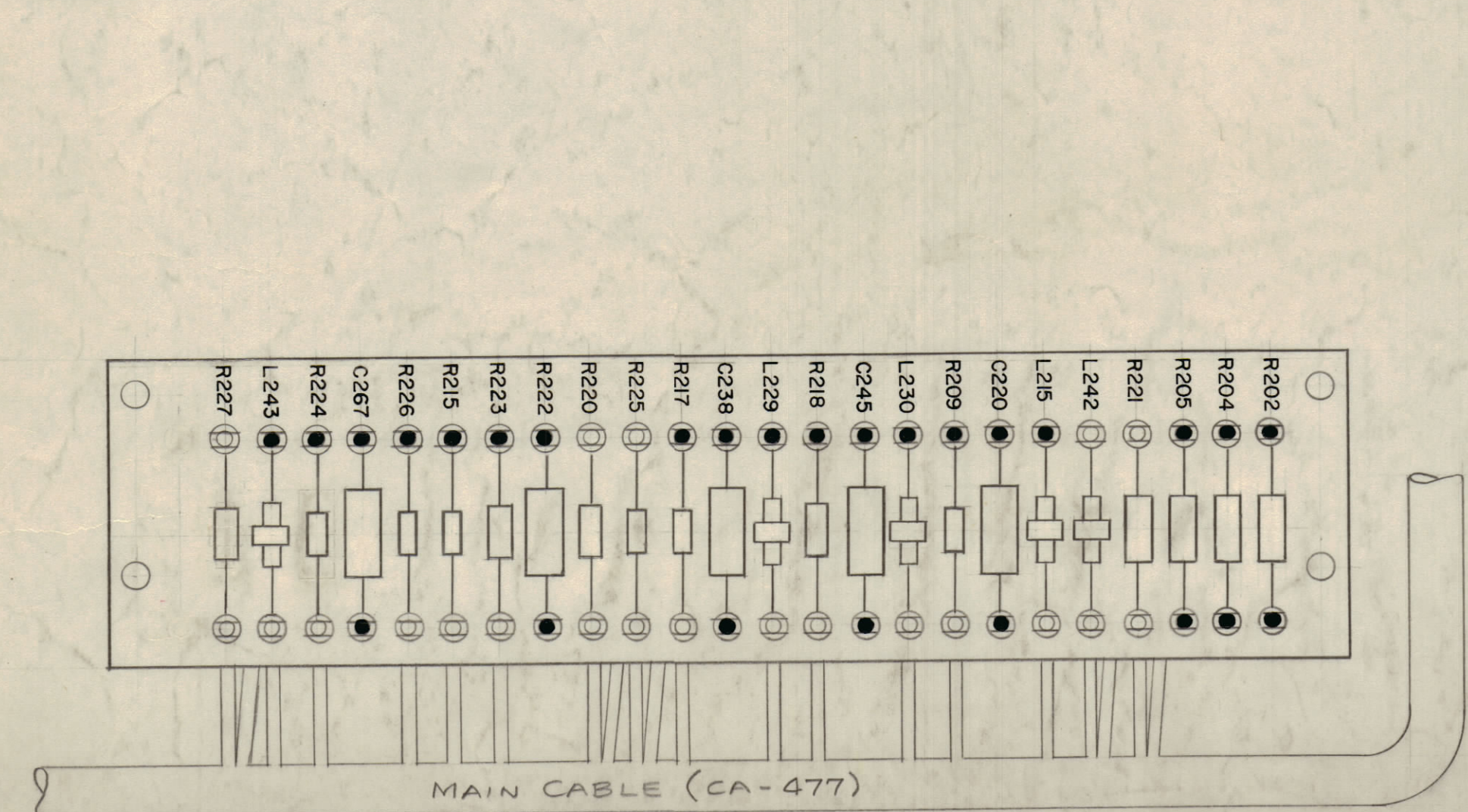


STAGE 2 MECH. ASS'Y.

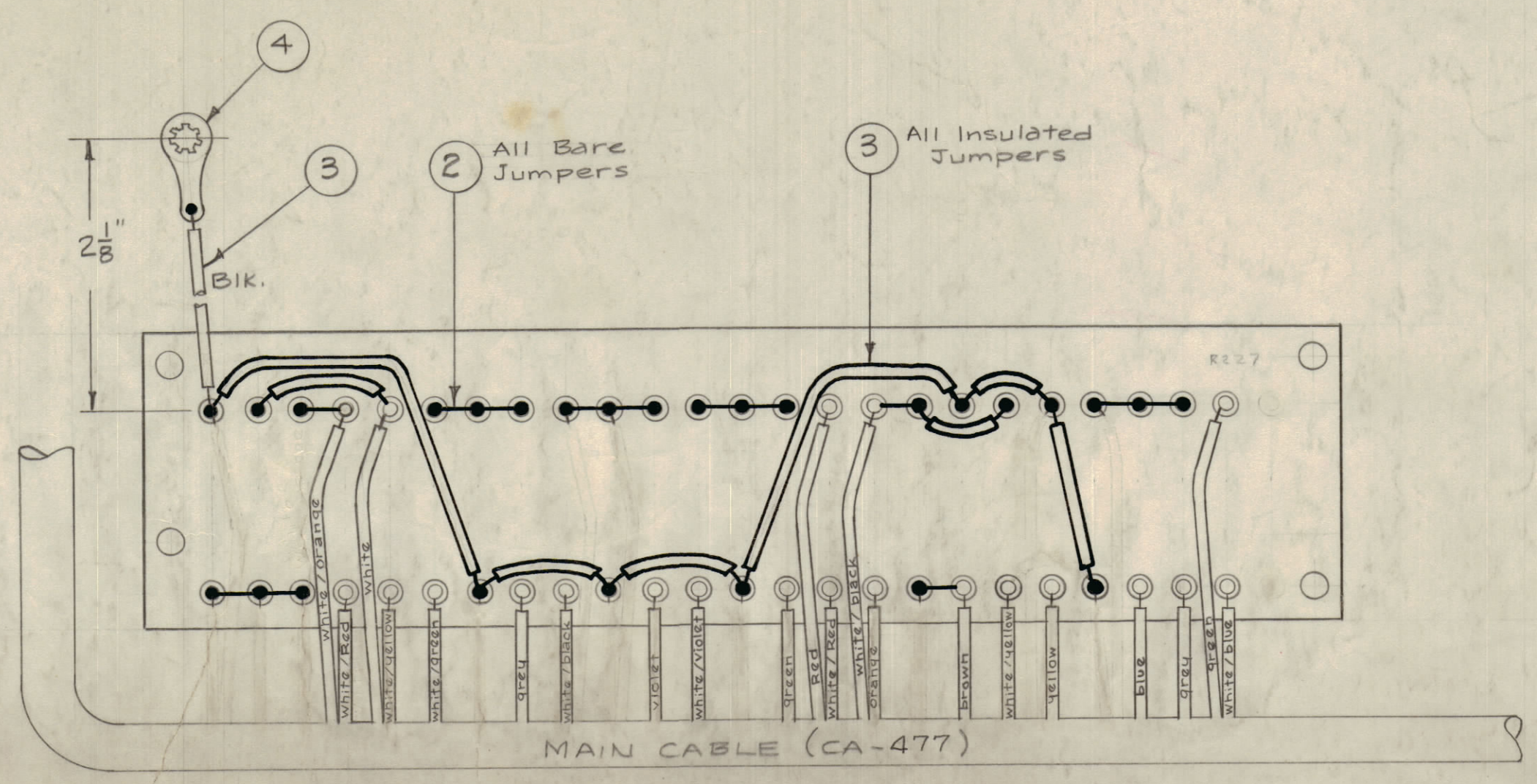


Lettering 1/8 High Black Gothic

STAGE 3 LETTERING



STAGE 4 FINAL ASSY.



NOTE - Main Cable (CA-477) Shown for Ref. only.
 Solder all connections indicated by blackened terminals.
 All other connections (from Cable) to be soldered upon Assembly of Terminal Board into Unit.

REQ. ITEM	PART NO.	DESCRIPTION	SYMBOL
1 21	RC20GF823J	RESISTOR, FIXED COMPOSITION	R209
1 20	RC20GF394K	RESISTOR, FIXED COMPOSITION	R227
1 19	RC20GF274K		R224
1 18	RC20GF123 K		R226
1 17	RC20GF156K		R215
1 16	RC48 GF120K		R222
1 15	RC20GF305J		R225
1 14	RC20GF474K		R218
1 13	RC20GF683J		R217
1 12	RC32GF184K		R223
1 11	RC32GF822K		R220
1 10	RC32GF683K	RESISTOR, FIXED COMPOSITION	R221
9	DELETED		
2 8	RC32GF473K	RESISTOR, FIXED COMPOSITION	R204 R205
1 7	RC20GF 100 K	RESISTOR, FIXED COMPOSITION	R202
4 6	CN108C1003J	CAPACITOR, FIXED MYLAR (L242, L230, L215)	
5 5	CL-180	COIL, R.F. FIXED (L242, L230, L215)	
1 4	TE-104-3	Lug, Terminal	
X 3	MWC22(1)U0	Wire, Insulated, Size 22	B.I.K.
X 2	WL-100-7	Wire, Buss Size 22	
48 1	TE-160	Terminal	

REQ. PER UNIT	MODEL	PROJECT NO.	ASSY. NO.	DATE
1	RFD-1	PAL-1K		6-16-59

ISSUE	ITEM	CHANGED FROM	DATE	CN. NO.	DRAFTS	CHECKER	ENG. APP.
C	1	ITEM #17 WAS RC20GF100K	8-25-59	2876		RH	JOS
B	1	ITEM 7 WAS RC 30GF682K	3-4-60	1886			
A	6	ITEM 18 WAS RC20GF 993 K					
A	5	ITEM 17 WAS RC 20 GF105 K					
A	4	ITEM 16 WAS RC 20 GF 120 K					
A	3	ITEM 15 WAS RC 20 GF 156 J					
A	2	ITEM 14 WAS RC 20 GF 184 J					
A	1	ITEM 13 WAS RC 20 GF 274 J					

ISSUE	ITEM	CHANGED FROM	DATE	CN. NO.	DRAFTS	CHECKER	ENG. APP.
E	6	Item #1 RC20GF100K	6/15/61	5021		JM	JOS
E	5	Item #5 WAS RC20GF120K					
E	4	Item #4 WAS RC20GF156K					
E	3	Item #3 WAS RC20GF184K					
E	2	Item #2 WAS RC20GF274K					
E	1	Item #1 WAS RC20GF394K					