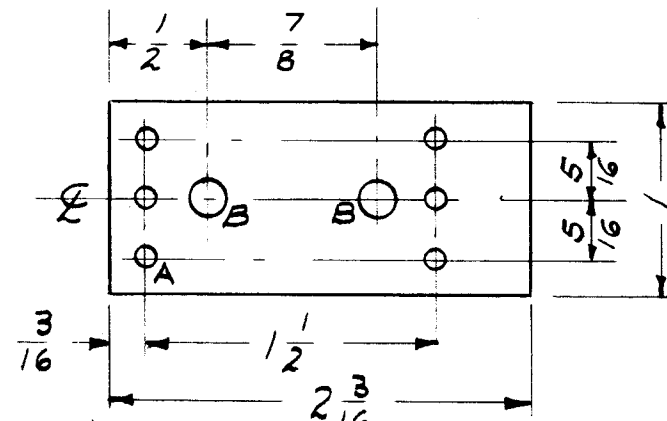
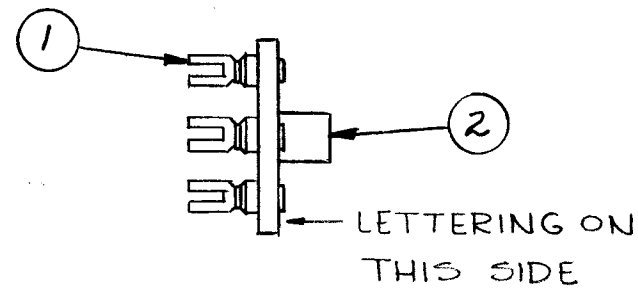


A-1723 C



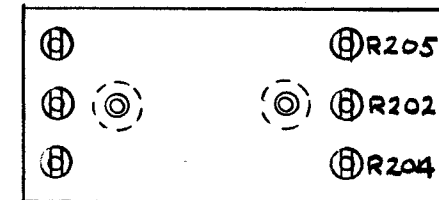
A - No 32 Dr. (.116) D. - 6 REQ'D.  
 B - No. 12 Dr. (.189) D. - 2 REQ'D.

STAGE 1 (MACHINING) A-1723-1



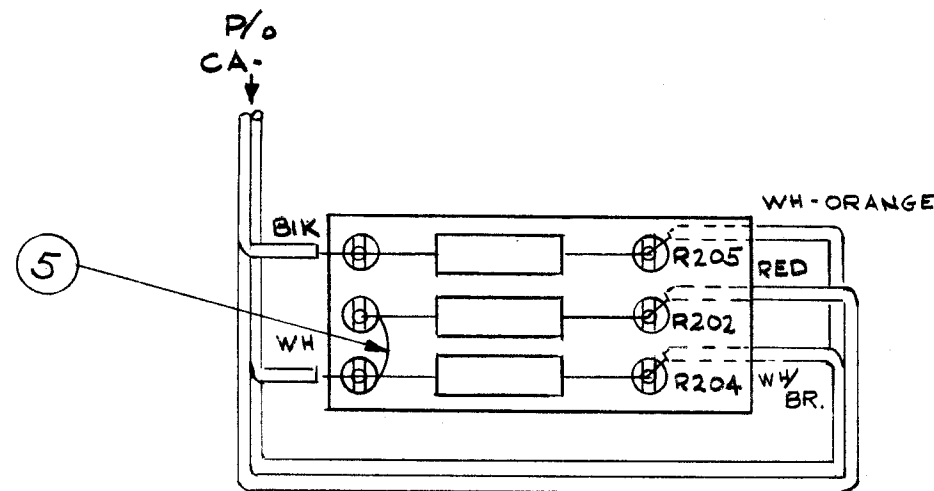
A-1723-3  
 STAGE 3 (MECHANICAL ASS'Y)

STAMP ON REAR A-1723-B



MARKING PROCESS: AS PER TMC SPECIFICATION S-727  
 - 1/8 HIGH BLACK GOTHIC

STAGE 2 (STAMPING) A-1723-2



WIRE BOARD AS SHOWN UPON ASS'Y TO UNIT

NOTICE TO PERSONS RECEIVING THIS DRAWING

THE TECHNICAL MATERIEL CORPORATION claims proprietary right in the material disclosed hereon. This drawing is issued in confidence for engineering information only and may not be reproduced or used to manufacture anything shown hereon without permission from THE TECHNICAL MATERIEL CORPORATION to the user. This drawing is loaned for mutual assistance and is subject to recall at any time.

Property of:

THE TECHNICAL MATERIEL CORPORATION  
 MAMARONECK, NEW YORK

STAGE 4 (ELECTRICAL ASS'Y) A-1723-4

REQ. ITEM	PART NO.	DESCRIPTION	SYMBOL
X 7	WL-100-7	WIRE, BUSS # 22	
X 6	BS-100	SOLDER, SOFT	
1 5	RC32GF182J	RESISTOR, FIXED COMP.	R205
1 4	RC32GF912J	" " "	R204
1 3	RC32GF153J	RESISTOR, FIXED, COMP.	R202
2 2	TE-108-3	STANDOFF, SPACER	B
6 1	TE-109-3	TERMINAL	A

1/8 THK STOCK SIZE		THE TECHNICAL MATERIEL CORP. MAMARONECK, NEW YORK	
PHENOLIC MATERIAL		TERMINAL BOARD	
KXKP LAMINATE		ATS-50(70)TU2	
TYPE & TEMPER	HEAT TREAT. SPEC.	DRAWN	CHECKED
NATURAL		SAT	
FINISH & SPEC. NO.	ELEC. DES. APP.	MECH. DES. APP.	

ISSUE	ITEM	CHANGED FROM	DATE	CH. NO.	DRAFTS	CHECKER	ENG. APP.
C		P/N CHG ON ITS. 3, 4, 5	8-2-72	20786	GE		
B	1	STAGE 2 WAS 3, 3 WAS 2	3-1-63	8329			
A	1	ITEM 3 WAS RC30GF103K ITEM 4 WAS RC30GF162K	10/6/59	1378	16		