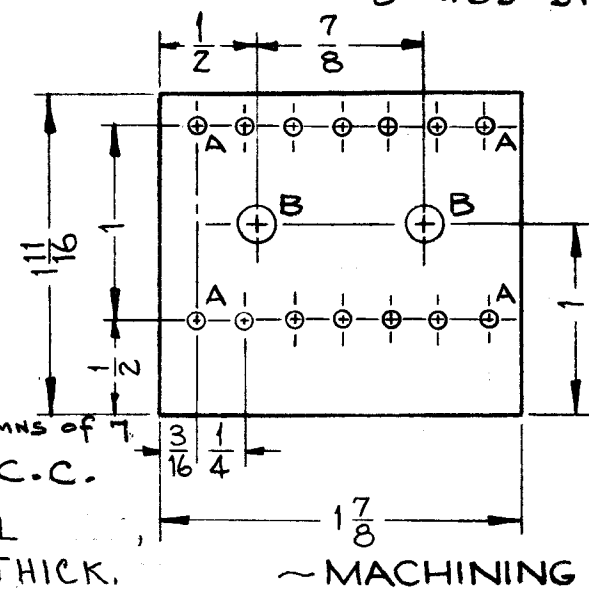


A-1796

Holes Req'd.  
 A ~ 5/64 (.078) Dia. 14  
 B ~ .189 Dia. 2

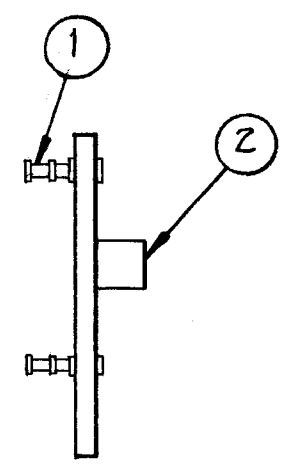


NOTE:  
 14 holes in two columns of 7  
 1/4" APART from C.C.

MATERIAL: NATURAL PHENOLIC, XXXP 1/16 THICK.

A-1796-1

~ MACHINING

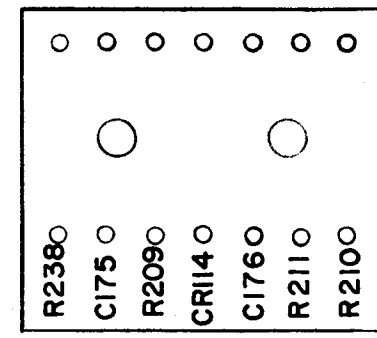


A-1796-3

~ SUB-ASSEMBLY

MARKING PROCESS: AS PER TMC SPECIFICATION S-727

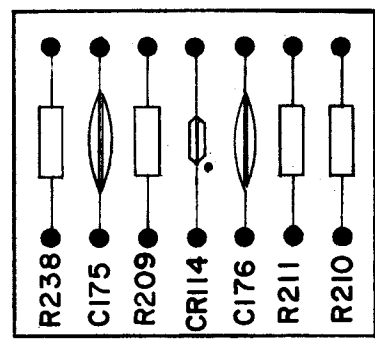
ALL LETTERING 1/8 HIGH BLACK GOTHIC



A-1796-2

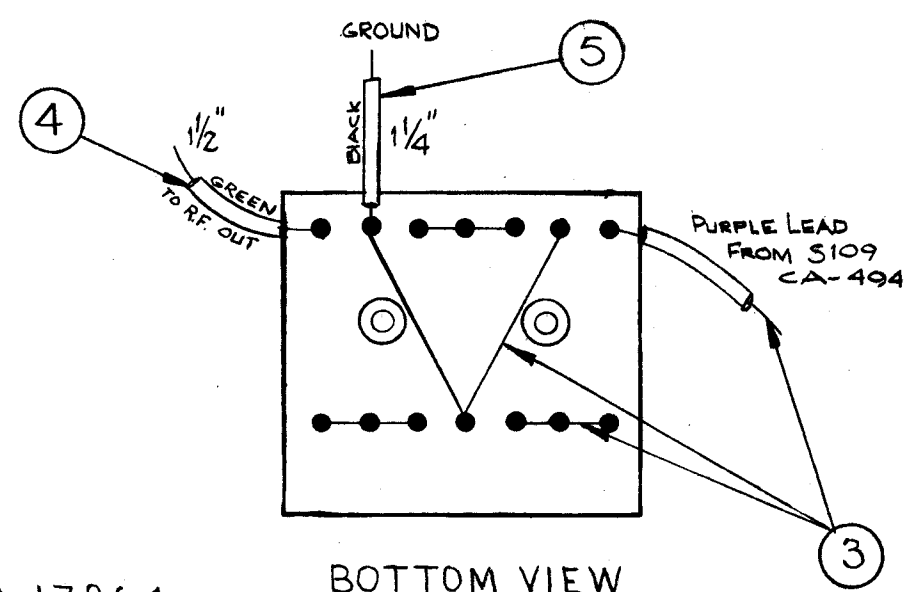
~ STAMPING

NOTE:  
 SOLDER ALL SPOTS MARKED ●.



TOP VIEW

A-1796-4



BOTTOM VIEW

REQ. ITEM	PART NO.	DESCRIPTION	SYMBOL
1	12	IN303	DIODE
1	11	CC-100-16	DISK CAPACITOR
1	10	CC-100-29	DISK CAPACITOR
1	9	RC20GF515J	RESISTOR, FIXED, COMP.
1	8	RC20GF335K	↑
1	7	RC20GF561K	
1	6	RC20GF102K	RESISTOR, FIXED, COMP.
1"	5	PX-104-1-034	INSULATION SLEEVING
1 1/4"	4	PX-104-4-034	INSULATION SLEEVING
X	3	WL-100-7	WIRE, BUSS-BAR, TINNED
2	2	TE-108-1	STANDOFF, RIVET TYPE
14	1	TE-168-4B	TERMINAL, MINIATURE

ISSUE	ITEM	CHANGED FROM	DATE	CH. NO.	DRAFTS	CHECKER	ENG. APP.
D	4	A-1796-4 WAS 4+5	11/8/60	1737	M.F.	J.R.	J.R.
	3	A-1796-2 WAS STAGE 3					
	2	A-1796-3 WAS STAGE 2					
	1	A-1796-1 WAS STAGE 1					
C	1	ITEM 9 WAS RC20GF515K	12/23/59	1698	A.B.	J.R.	J.R.
B	1	C175 WAS CC-100-9	12-1-59	1603	J.R.	J.R.	J.R.
A	2	ITEM 8 WAS RC20GF513K	11-23-59	1580	D.M.	J.R.	J.R.
	1	ITEM 9 WAS RC20GF333K					

TOLERANCES		SCALE:	
DEC. DIM. ±		1	SBE-3
FRAC. DIM. ±		REQ. PER UNIT	MODEL
ANGULAR DIM. ±			PROJECT NO.
			ASS'Y. NO.
			DATE

REQ. PER UNIT	MODEL	PROJECT NO.	ASS'Y. NO.	DATE
1	SBE-3		AD-101	11-3-59
USED ON				

1/16 STOCK SIZE		THE TECHNICAL MATERIEL CORP. MAMARONECK, NEW YORK	
PHENOLIC MATERIAL		TERMINAL BOARD, R.F. OUTPUT METER	
XXX		D. MANCUSO	J.R.
TYPE & TEMPER	HEAT TREAT. SPEC.	DRAWN	CHECKED
NATURAL		J.R.	J.R.
FINISH & SPEC. NO.		ELEC. DES. APP.	MECH. DES. APP.
		A-1796	D