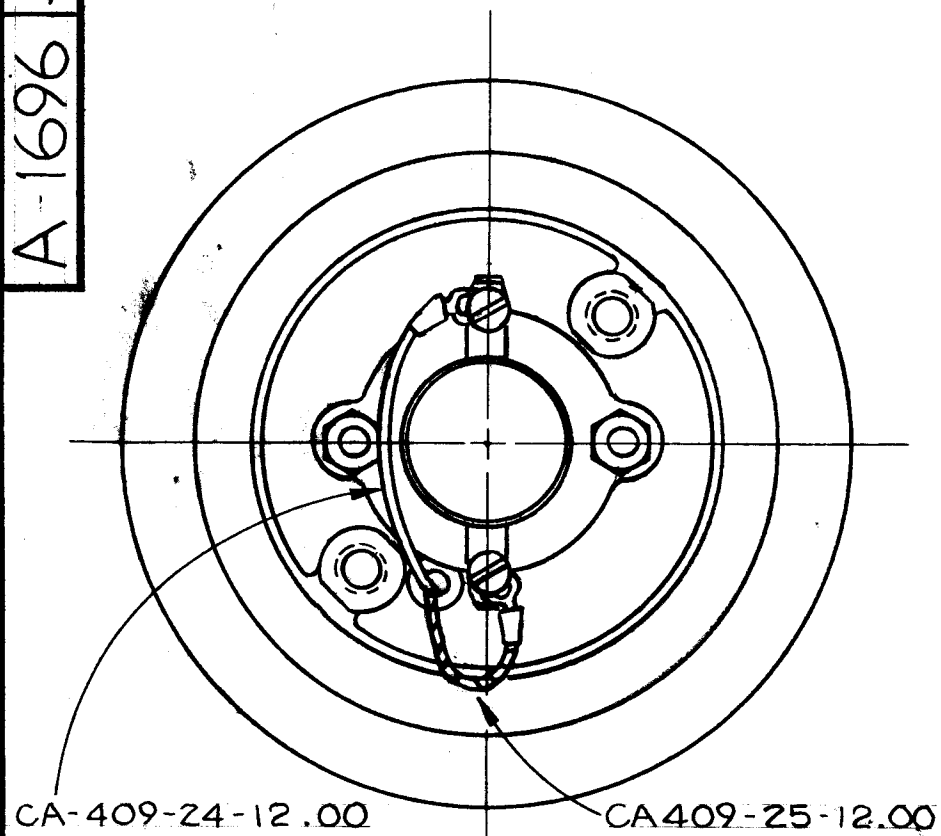
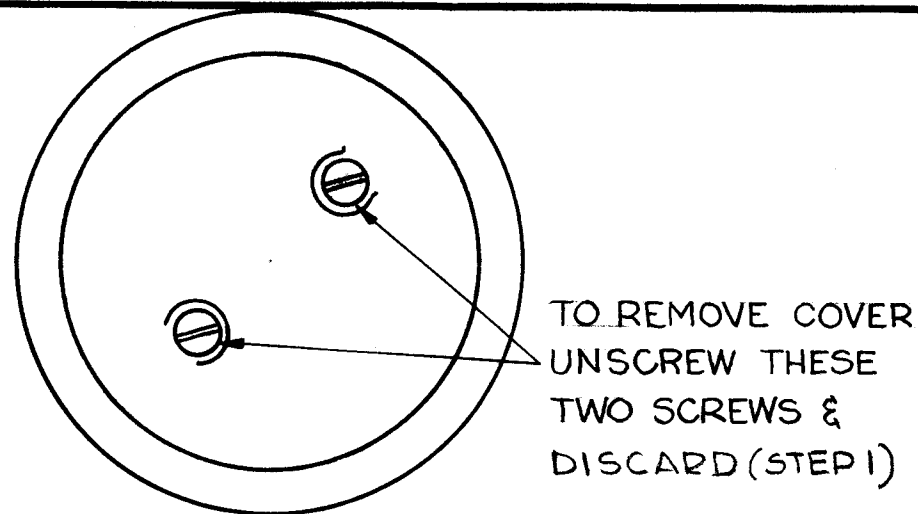


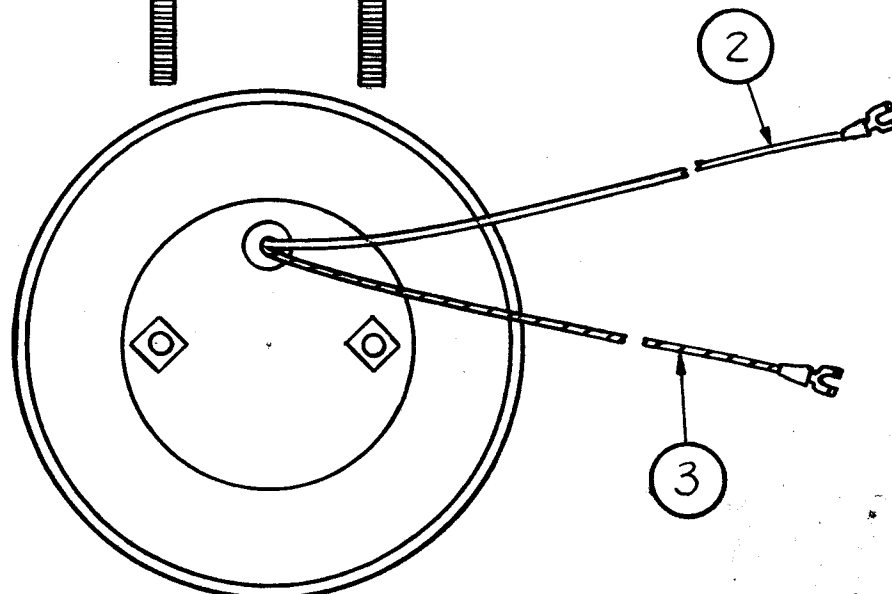
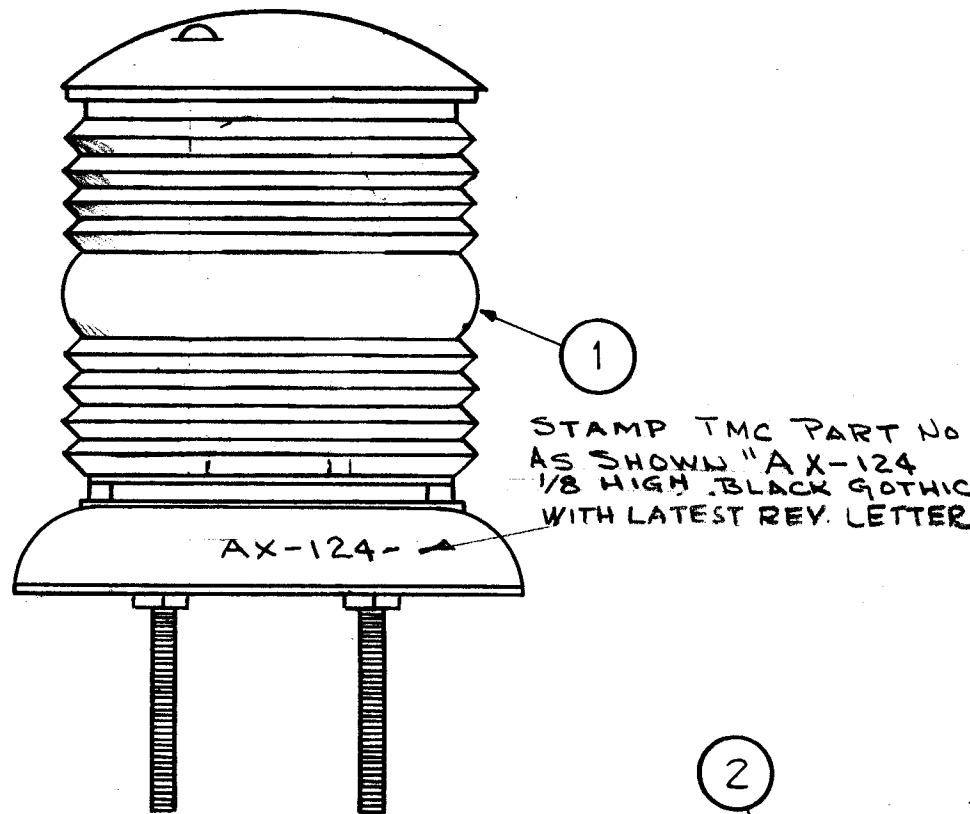
A-1696 D



TOP VIEW  
(WITH COVER REMOVED)

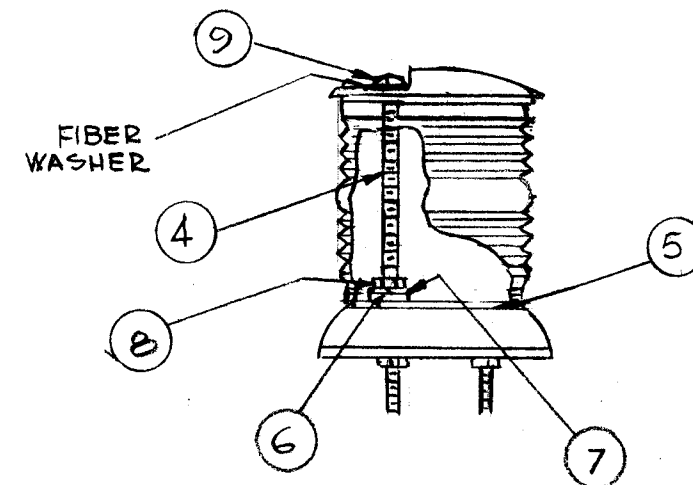


TOP VIEW



MODIFICATION PROCEDURE (USE DWG. TS138 AS GUIDE)

1. Remove & discard two 1/4-20 by 5 in. long Screws, Part No. Tsl38-B2. Save fiber washers.
2. Dis-Assemble top cap & glass lens, (including gaskets), remove bulb.
3. Assemble two new leads, Items 2 & 3.
4. Assemble two new studs, Item 4, into holes from which screws were previously removed. Screw in flush.
5. Assemble insulator, Item 5, onto studs.
6. Assemble flat washers, lock washers, and nuts against insulator, use Item 6, 7, and 8. Reinsert bulb.
7. Reassemble glass lens and Top cap. (including gaskets).
8. Reassemble two fiber washers removed in Step 1.
9. Assemble two cap nuts, Item 9.



D	IT. 4 P/N WAS .75	5-11-72	20683	GE	EP	EP	
C	REV. PROC. STEPS 2, 4 & 6	5-31-66	16303	HLA	QCP	MMK	
B	ITEM 4 THRU 9 ADDED MOD. PROCEDURE & PICT. ADDR	3-23-66	15972	GDL	QCP	MMK	
A	2 1	ITEM(3) WAS CA-409-25-24.00 ITEM(2) WAS CA-409-24-24.00	62863 9413	EP	JAY	QCP	
ISSUE	ITEM	CHANGED FROM	DATE	CH. NO.	DRAFTS	CHECKER	ENG. APP.

TOLERANCES		SCALE:	
DEC. DIM. ±	MAXIMUM ALLOWABLE TOLERANCES HAVE BEEN DETERMINED AND ANY DEVIATIONS WILL BE CAUSE FOR REJECTION. REMOVE ALL BURRS AND SHARP EDGES	1 GPT 10K	
FRAC. DIM. ±		MODEL	PROJECT NO.
ANGULAR DIM. ±		ASS'Y. NO.	DATE

1	GPT 10K	AX-166	5-26-59
REQ. PER UNIT	MODEL	PROJECT NO.	DATE
USED ON			

2	9	NTC2520BNL	NUT, CAP
2	8	NTH2520BN14	NUT, PLAIN, HEX
2	7	LWS25MRN	WASH, LK, SPLIT
2	6	FW25HBN	WASH, FLAT
1	5	PX 979	INSULATOR, DISC
2	4	SM2520BN5.750	STUD, THD
1	3	CA409-25-12.00	LEAD, ELECT
1	2	CA409-24-12.00	LEAD, ELECT
1	1	TS-138	LAMP, SOCKET (W/LENS)

REQ. ITEM	PART NO.	DESCRIPTION	SYMBOL
THE TECHNICAL MATERIEL CORP. MAMARONECK, NEW YORK			
AX-124 ASSEMBLY (H.V. LAMP SOCKET)			
MATERIAL		J.C. BIELE	AMP
TYPE & TEMPER	HEAT TREAT. SPEC.	DRAWN	CHECKED
FINISH & SPEC. NO.		ELEC. DES. APP.	MECH. DES. APP.

A 1696 D