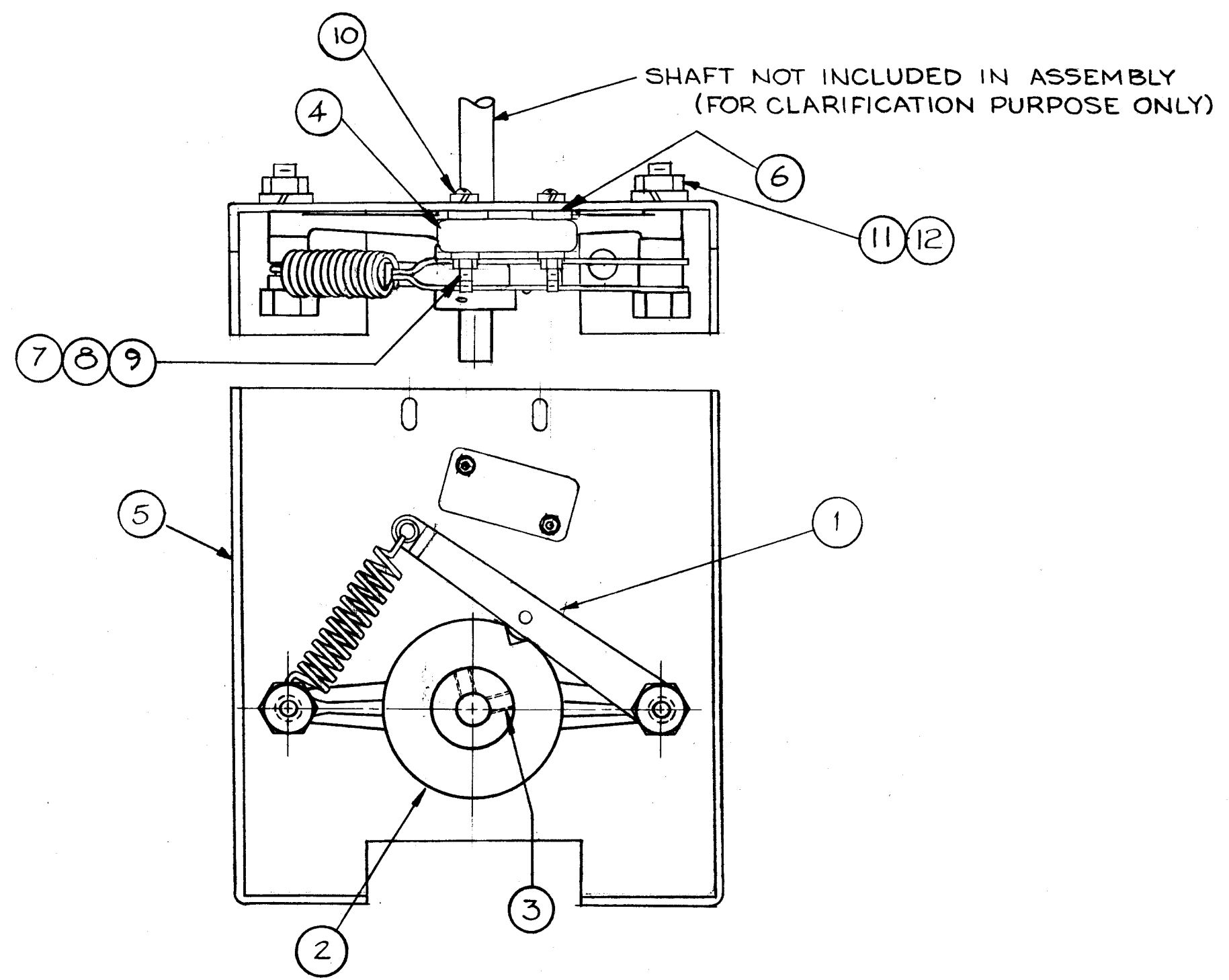


A-1689 D



2	12	NTH0832BN10	NUT, HEX.	
2	11	LWE08MRN	WASHER, LOCK	
2	10	LWS04MRN	WASHER, LOCK	
2	9	SCBP0440BN16	SCREW, MACH.	
2	8	NTH0440BN8	NUT, HEX	
2	7	WA-109-18	WASHER, FIBER	
2	6	TE-117-11	SPACER, SLEEVE, 3/8 D. x 1/4 LG.	
1	5	MS-1567(LD-556)	BRACKET, DETENT MTG.	
1	4	SW-189	SWITCH, SENSITIVE	S901
2	3	SLHC0832SP3	SET SCREW, 8-32 x 3/16 LONG	
1	2	PM-550	DETENT, R.F. BAND SWITCH	
1	1	PO-199	BRACKET & DETENT ARM ASSY	
REQ. ITEM	PART NO.		DESCRIPTION	SYMBOL
THE TECHNICAL MATERIEL CORP. MAMARONECK, NEW YORK				
STOCK SIZE				
DETENT-SWITCH ASSY				
P.A. BAND SWITCH				
MATERIAL				
		J.C. BIELE	<i>[Signature]</i>	<i>[Signature]</i>
		DRAWN	CHECKED	FINAL APPROVAL
		<i>[Signature]</i>		A-1689 D
		FINISH & SPEC. NO.		ELEC. DES. APP. MECH. DES. APP.

D		IT. 3 PT. NO. WAS AN 565DBH3	9/29/66	16905	JL	<i>[Signature]</i>	<i>[Signature]</i>
C	2	ITEMS (4) THRU (12) ADDED	1-30-62	6236	G.S.	<i>[Signature]</i>	<i>[Signature]</i>
	1	TITLE WAS ASSY DETENT PA. BAND SW					
B	3	ITEM "3" WAS ADDED	8-30-60	2884	RU	<i>[Signature]</i>	<i>[Signature]</i>
A	2	Item 1 Was PO-179	8-11-60	2749	J.C.B.	<i>[Signature]</i>	<i>[Signature]</i>
	1	Items 3, 4, 5 Deleted					
ISSUE	ITEM	CHANGED FROM	DATE	CH. NO.	DRAFTS	CHECKER	ENG. APP.

TOLERANCES		SCALE:	
DEC. DIM. ±		MAXIMUM ALLOWABLE TOLERANCES HAVE BEEN DETERMINED AND ANY DEVIATIONS WILL BE CAUSE FOR REJECTION. REMOVE ALL BURRS AND SHARP EDGES	
FRAC. DIM. ±			
ANGULAR DIM. ±			

1	GPT 10K	AX-137		5-6-59
REQ. PER UNIT	MODEL	PROJECT NO.	ASSY. NO.	DATE
				USED ON