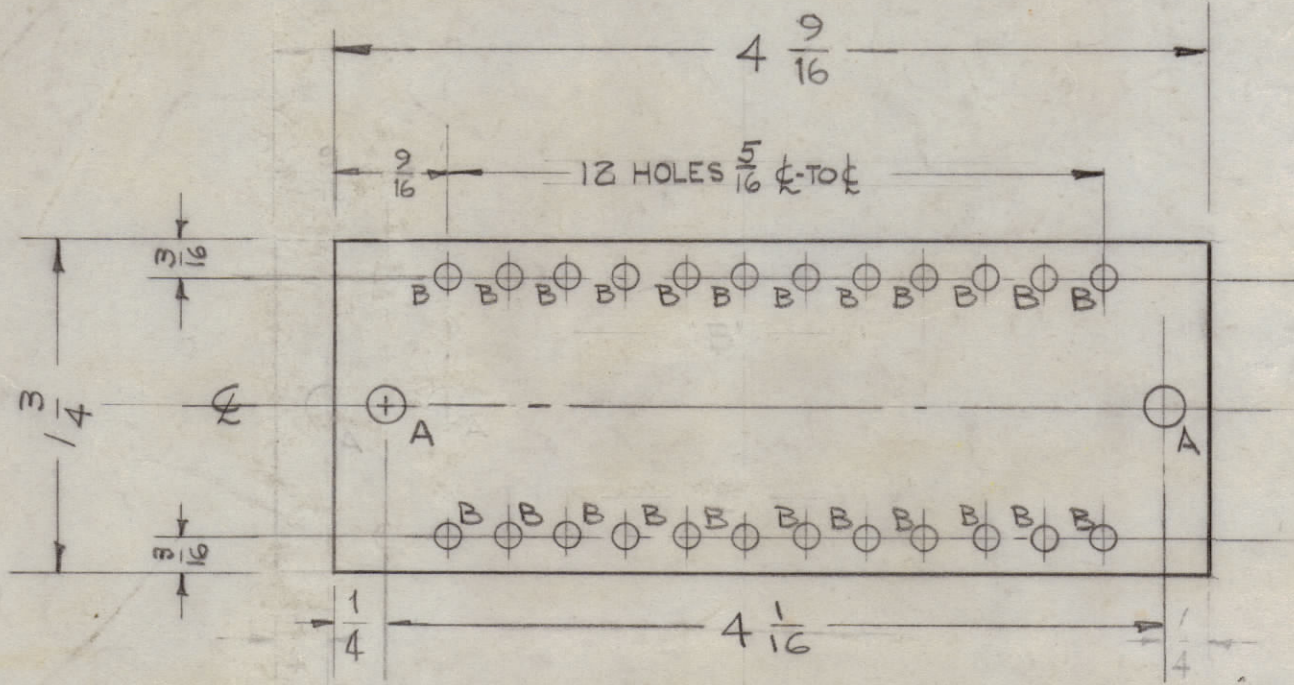


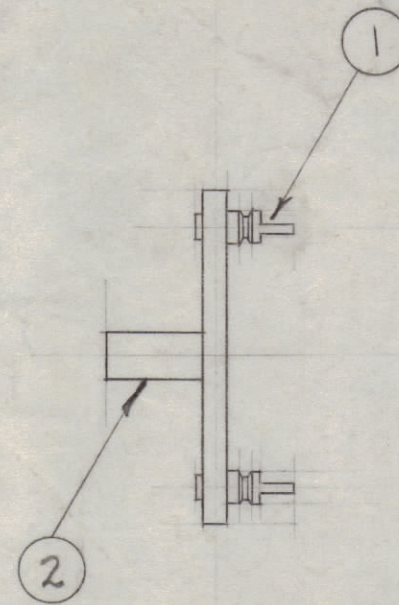
IF IT IS FOUND DESIRABLE TO CHANGE ANY TOLERANCE OR OTHER DETAIL SPECIFIED ON THIS DRAWING NOTIFY THE PURCHASER PROMPTLY.

MAXIMUM ALLOWABLE TOLERANCES HAVE BEEN DETERMINED AND DEVIATIONS WILL BE CAUSE FOR REJECTION. REMOVE ALL BURRS AND SHARP EDGES.

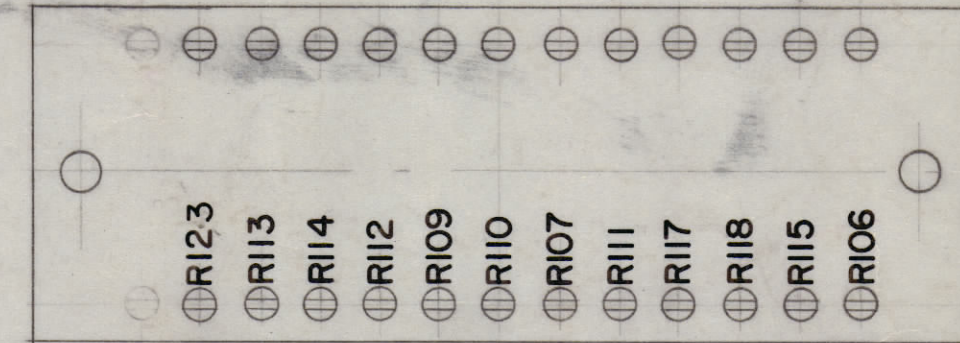


A - NO. 12 DRILL (.189) 2 REQ'D.  
B - NO. 32 DRILL (.116) 26 REQ'D.

STAGE 1 MACHINING (A-1683-1)



A-1683-3  
STAGE 3 MECH. ASS'Y.

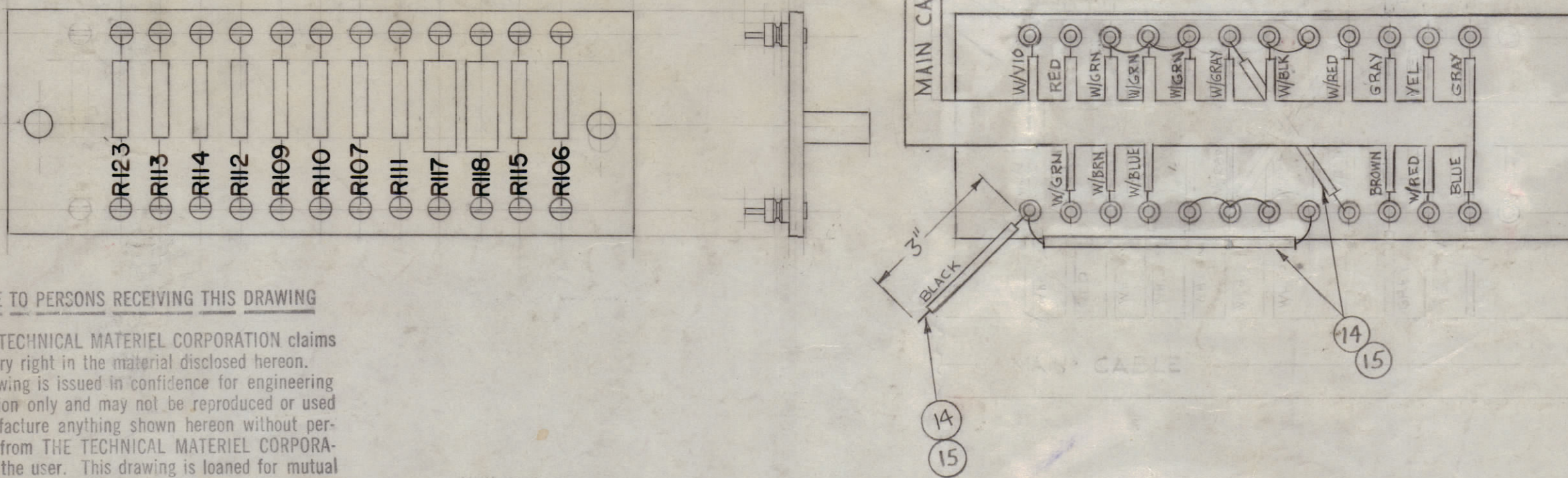


ALL LETTERING TO BE 1/8 HIGH BLACK GOTHIC.

MARKING PROCESS: AS PER TMC SPECIFICATION S-727

STAGE 2 LETTERING (A-1683-2)

A-1683 H



NOTICE TO PERSONS RECEIVING THIS DRAWING

THE TECHNICAL MATERIEL CORPORATION claims proprietary right in the material disclosed hereon. This drawing is issued in confidence for engineering information only and may not be reproduced or used to manufacture anything shown hereon without permission from THE TECHNICAL MATERIEL CORPORATION to the user. This drawing is loaned for mutual assistance and is subject to recall at any time.

Property of:

THE TECHNICAL MATERIEL CORPORATION

STAGE 4 ELECTRICAL ASS'Y. (A-1683-4)

X	15	PX-104-0-053	INSULATION SLEEVING, SIZE 16	BLACK
X	14	WL-100-7	WIRE, BUSS (SIZE #22)	
X	13	BS-100	SOLDER, SOFT	
X	12	PX-104-1-034	INSULATION SLEEVING (SIZE )	
X	11	WL-100-7	WIRE, BUSS (SIZE )	
2	10	RC32GF104K	RESISTOR, FIXED, COMP.	R123 R106
1	9	RC32GF364J		R113
1	8	RC32GF164J		R114
1	7	RC32GF823K		R112
3	6	RC32GF273K		R-109 R115
1	5	RC32GF753J		R111
2	4	RC42GF153K		R117 R118
1	3	RC32GF220K	RESISTOR, FIXED, COMP.	R115
2	2	TE-108-13	SPACER, STANDOFF	A
24	1	TE-109-3	TERMINAL	B

REQ. ITEM	PART NO.	DESCRIPTION	SYMBOL
1/8 THICK		THE TECHNICAL MATERIEL CORP.	
STOCK SIZE		MAMARONECK, NEW YORK	
PHENOLIC		TERMINAL BOARD ASSY	
MATERIAL WEIGHT PER PC.		MCU-2 / ATS-50(70)	
TYPE & TEMPER		DRAWN	ELEC. DES. APP. MECH. DES. APP.
HEAT TREAT. SPEC.		CHECKED	FINAL APPROVAL
NATURAL			
FINISH & SPEC. NO.			

1	MCU-2	ATS-2	4/27/59
REQ. PER UNIT	MODEL	PROJECT NO.	ASSY. NO. DATE

ISSUE	ITEM	CHANGED FROM	DATE	CH. NO.	DRAFTS	CHECKER	ENG. APP.
H	1	(A-1683-4) MAIN CABLE WIRING REVISED.	12-28-64	13162			