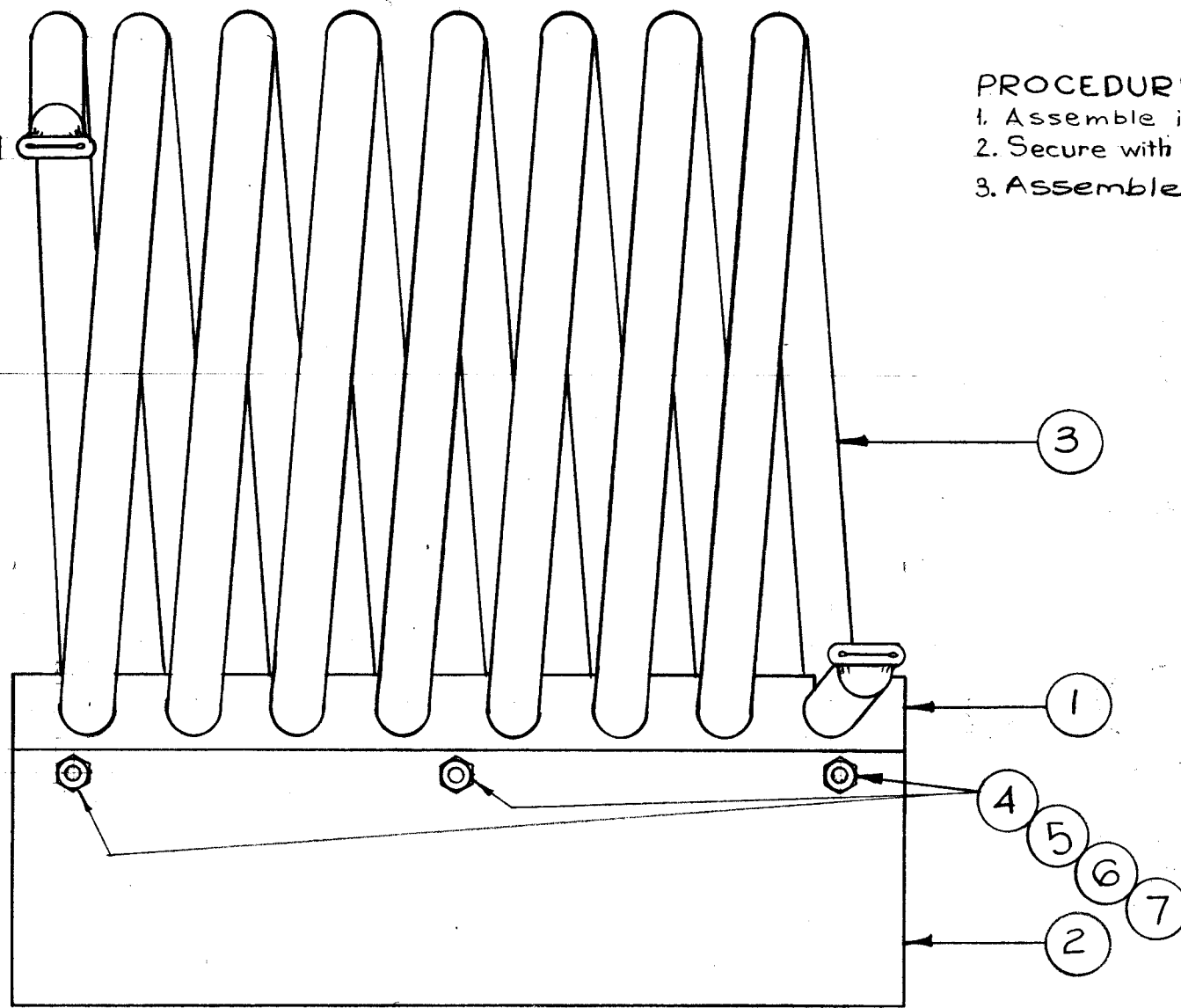
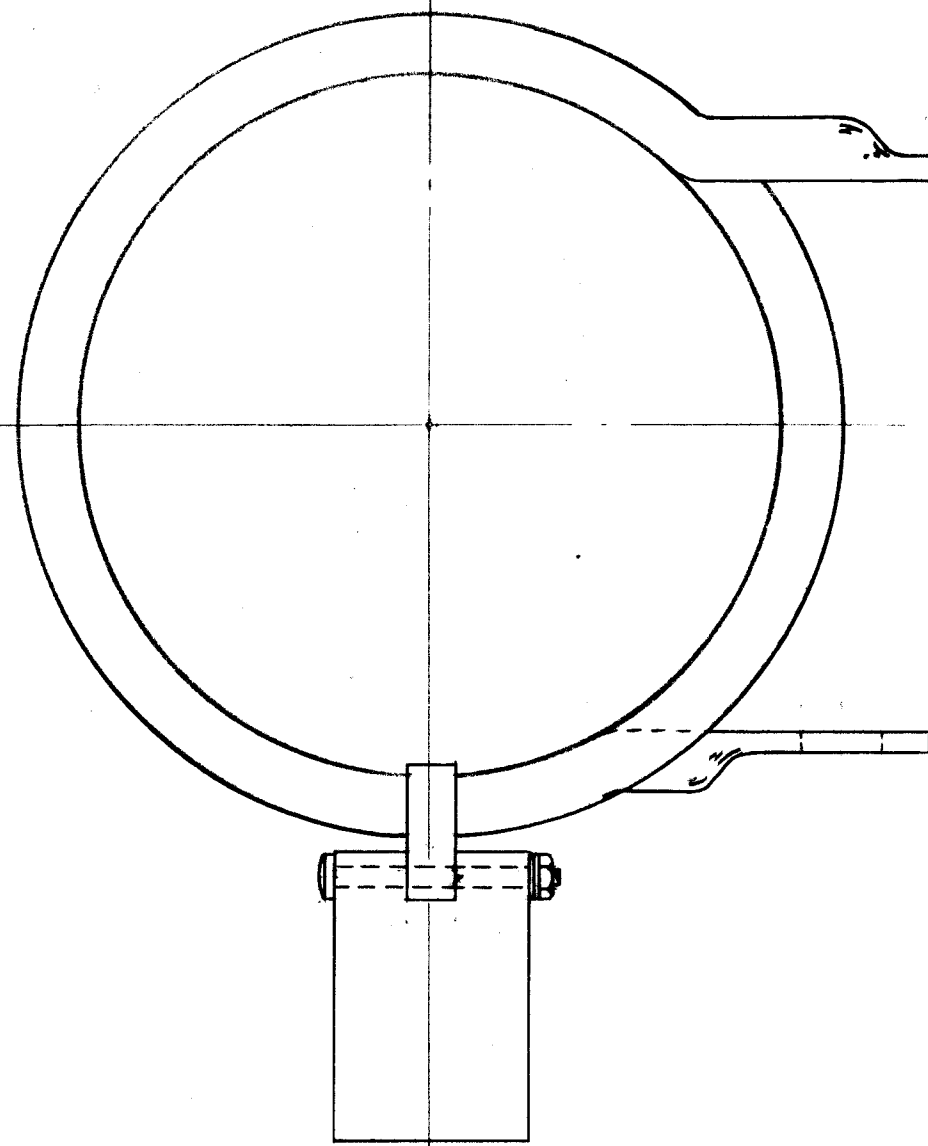


A-1674 C



- PROCEDURE**
1. Assemble items 1 & 2.
 2. Secure with items 4, 5, 6, 7.
 3. Assemble item 3 as shown.

NOTICE TO PERSONS RECEIVING THIS DRAWING

THE TECHNICAL MATERIEL CORPORATION claims proprietary right in the material disclosed hereon. This drawing is issued in confidence for engineering information only and may not be reproduced or used to manufacture anything shown hereon without permission from THE TECHNICAL MATERIEL CORPORATION to the user. This drawing is loaned for mutual assistance and is subject to recall at any time.

Property of:
 THE TECHNICAL MATERIEL CORPORATION
 MAMARONECK, NEW YORK

REQ. ITEM	PART NO.	DESCRIPTION	SYMBOL
3	7	NTH0440BN8 NUT, HEX	
3	6	LWEO4MRN LOCKWASHER, EXTERNAL	
3	5	FWO4HBN WASHER, FLAT	
3	4	SCBPO440BN20 SCREW, MACHINE	
1	3	CL-169 Coil, RF, Fixed	
1	2	PX-438 Support, Coil	
1	1	PX-405 Support, Coil, Teflon	
THE TECHNICAL MATERIEL CORP. MAMARONECK, NEW YORK			
AC-102 ASSEMBLY (COIL, RF, ANT. TUNER)			
MATERIAL		16 ¹⁰ /15/59	
TYPE & TEMPER			
HEAT TREAT. SPEC.			
FINISH & SPEC. NO.			
DRAWN		CHECKED	
ELEC. DES. APP.		MECH. DES. APP.	
		A-1674 C	

ISSUE	ITEM	CHANGED FROM	DATE	CH. NO.	DRAFTS	CHECKER	ENG. APP.
C	2	ITEM 4 WAS (2) PN89-062-16 ITEMS 5, 6, 7 ADDED	5-14-63	8958	2	JNY	[Signature]
B	1	PROCEDURE 2 WAS DRILL THRU ITEM 2 PILOT HOLES WITH #52 DRILL	8-8-62	7042	4	G.S.	[Signature]
A	1	Item 3 was 2 Reg.	1-28-60	1820	1	WJ	[Signature]

TOLERANCES		SCALE: FULL	
DEC. DIM. ±	MAXIMUM ALLOWABLE TOLERANCES HAVE BEEN DETERMINED AND ANY DEVIATIONS WILL BE CAUSE FOR REJECTION.		
FRAC. DIM. ±	REMOVE ALL BURRS AND SHARP EDGES		
ANGULAR DIM. ±			

1	AC-102	GPT-10K		10-15-59
REQ. PER UNIT	MODEL	PROJECT NO.	ASS'Y. NO.	DATE
USED ON				