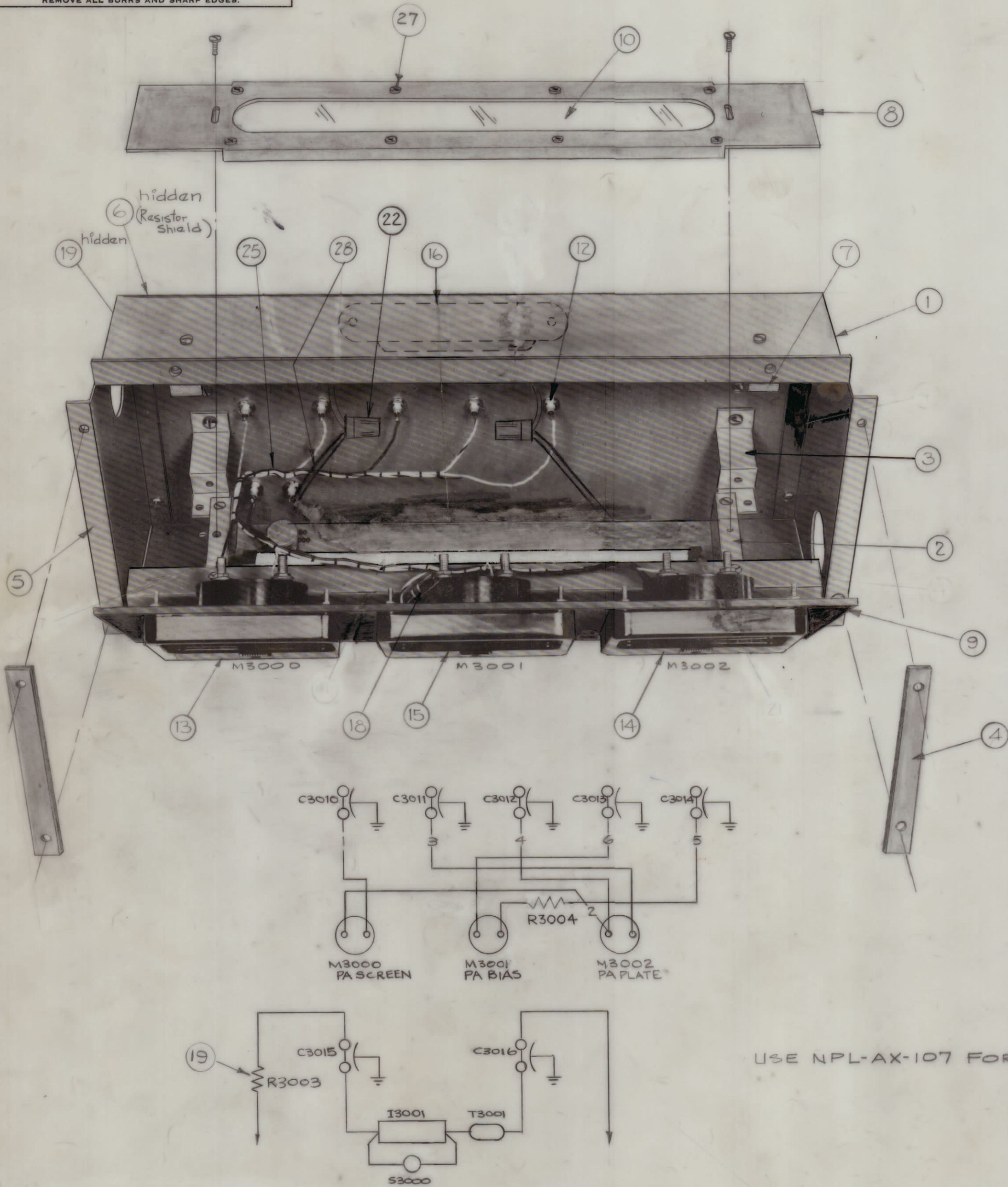


IF IT IS FOUND DESIRABLE TO CHANGE ANY TOLERANCE OR OTHER DETAIL SPECIFIED ON THIS DRAWING NOTIFY THE PURCHASER PROMPTLY.

MAXIMUM ALLOWABLE TOLERANCES HAVE BEEN DETERMINED AND DEVIATIONS WILL BE CAUSE FOR REJECTION. REMOVE ALL BURRS AND SHARP EDGES.



Mounted on Item 15  
2 Hidden  
Hidden

6"	28	MWC 18(16)U0	CABLE, INSULATED	BLK.
8	27	EY-100-1	Eyelet	
X	26	BS-100	Solder, Soft	
1	25	CA-433	Cable, Meter Box	
1	24	TE-104-5	Terminal, Locking (#1/4)	
1	23	TE-104-2	Terminal, Locking (#6)	
3	22	NT-121-71B	Nuts, Wire	
	21	DELETED		
				A 1660 D
	20	DELETED		
1	19	RW-102	Resistor, Wire Wound	R3003
1	18	RC42GF394J	Resistor, Fixed Composition	R3004
	17	DELETED		
1	16	PO-169	Ballast	T3001
1	15	MR-122	Meter, PA Bias	M3001
1	14	MR-121	Meter, PA Plate	M3002
1	13	MR-119	Meter, PA Screen	M3000
7	12	CK70A102M	Capacitor, Feedthru	
	11	DELETED		
1	10	PX-467	Window, Meter Light	
1	9	PX-450	Meter Panel	
1	8	MS-1705	Window Box	
2	7	MS-1684	Bracket Panel Support (Top)	
1	6	MS-1610	Cover, Meter Box	
2	5	MS-1580	End Plate, Meter Box	
2	4	MS-1579	Shim, Meter Box	
2	3	MS-1554	Bracket, Panel Support (Bottom)	
1	2	A2276	Chassis Ass'y Light	
1	1	MS-1551	Meter Box	
REQ. PER UNIT	ITEM	PART NO.	DESCRIPTION	SYMBOL
THE TECHNICAL MATERIEL CORP. MAMARONECK, NEW YORK				
STOCK SIZE				
MATERIAL WEIGHT PER PC.				
TYPE & TEMPER				
HEAT TREAT. SPEC.				
FINISH & SPEC. NO.				
AX-107 Ass'y. (METER BOX, AUX. FRAME)				
16/12/10/59				
DRAWN		ELEC. DES. APP.		MECH. DES. APP.
CHECKED		FINAL APPROVAL		
A 1660 D				

ISSUE ITEM	CHANGED FROM	DATE	CH. NO.	DRAFTS	CHECKER	ENG. APP.
D	RELOC. R3004 & TERM 5/6, REVISED B/M	1-10-67	17656	RME		

ALL OTHERS	DEC. DIM. ± FRAC. DIM. ± ANGULAR DIM. ±	SCALE: NONE DRILL, PUNCH, COMMERCIAL STOCK SIZES AND MANUFACTURERS TOLERANCES ARE NOT INCLUDED.
------------	---	--

1	GPT-10K	AX-107	12-10-59
REQ. PER UNIT	MODEL	PROJECT NO.	DATE