

IF IT IS FOUND DESIRABLE TO CHANGE ANY TOLERANCE OR OTHER DETAIL SPECIFIED ON THIS DRAWING NOTIFY THE PURCHASER PROMPTLY.

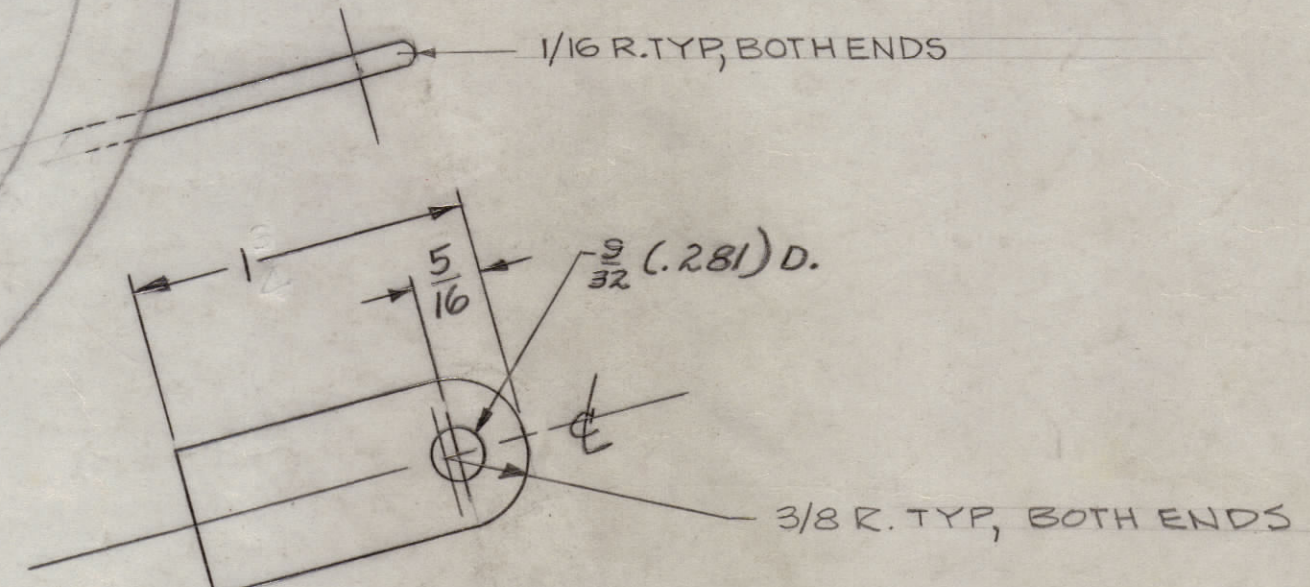
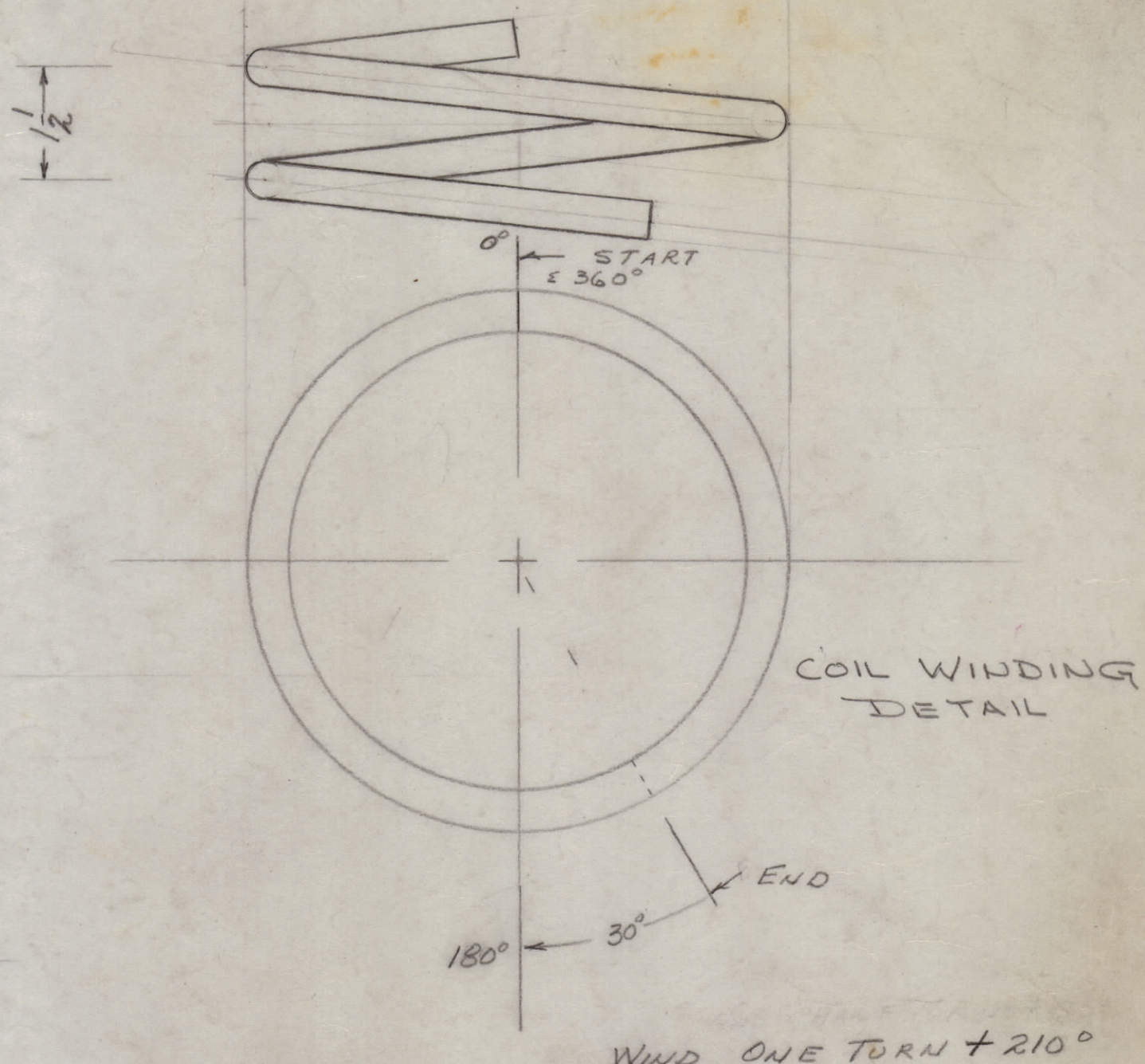
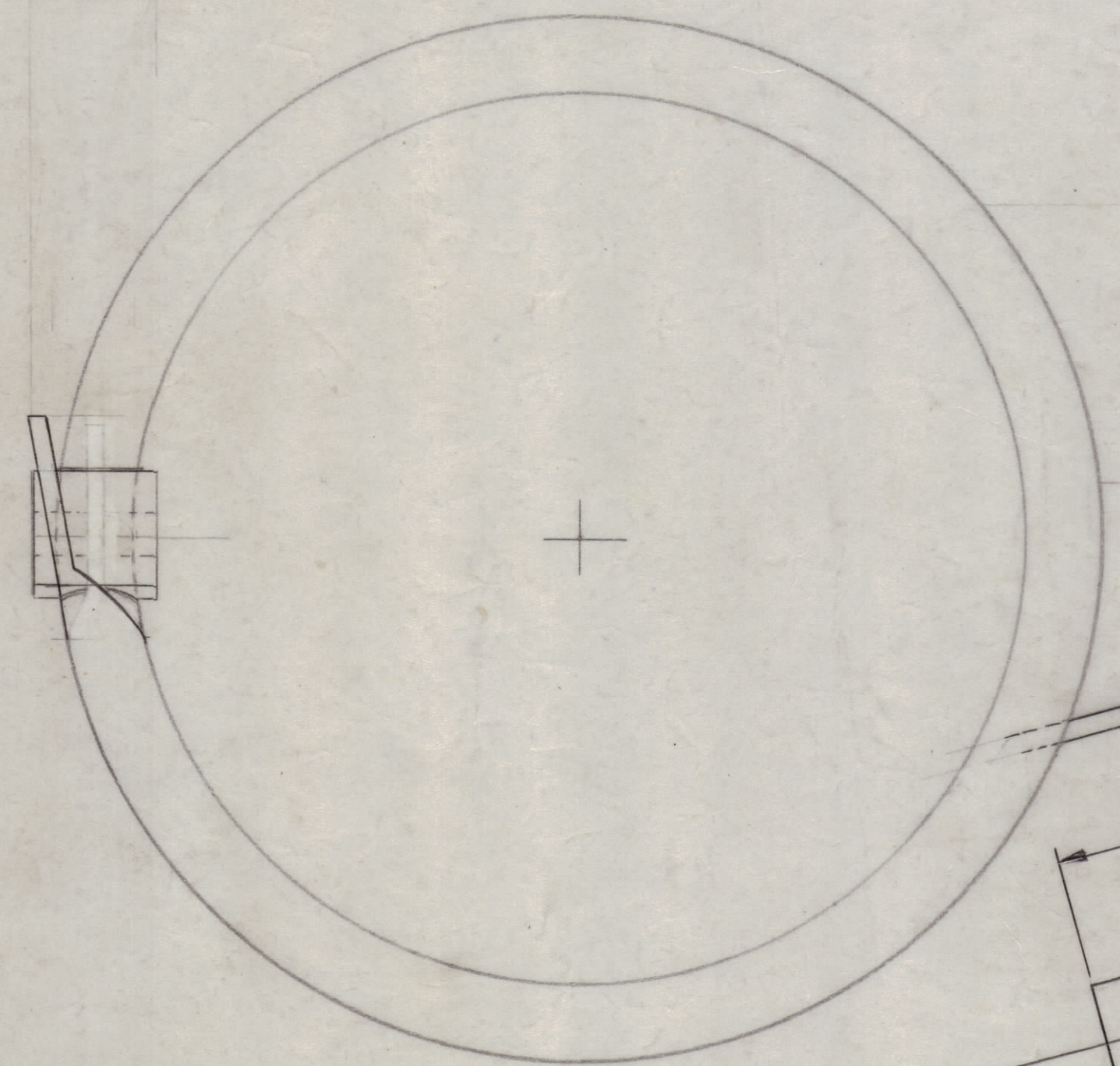
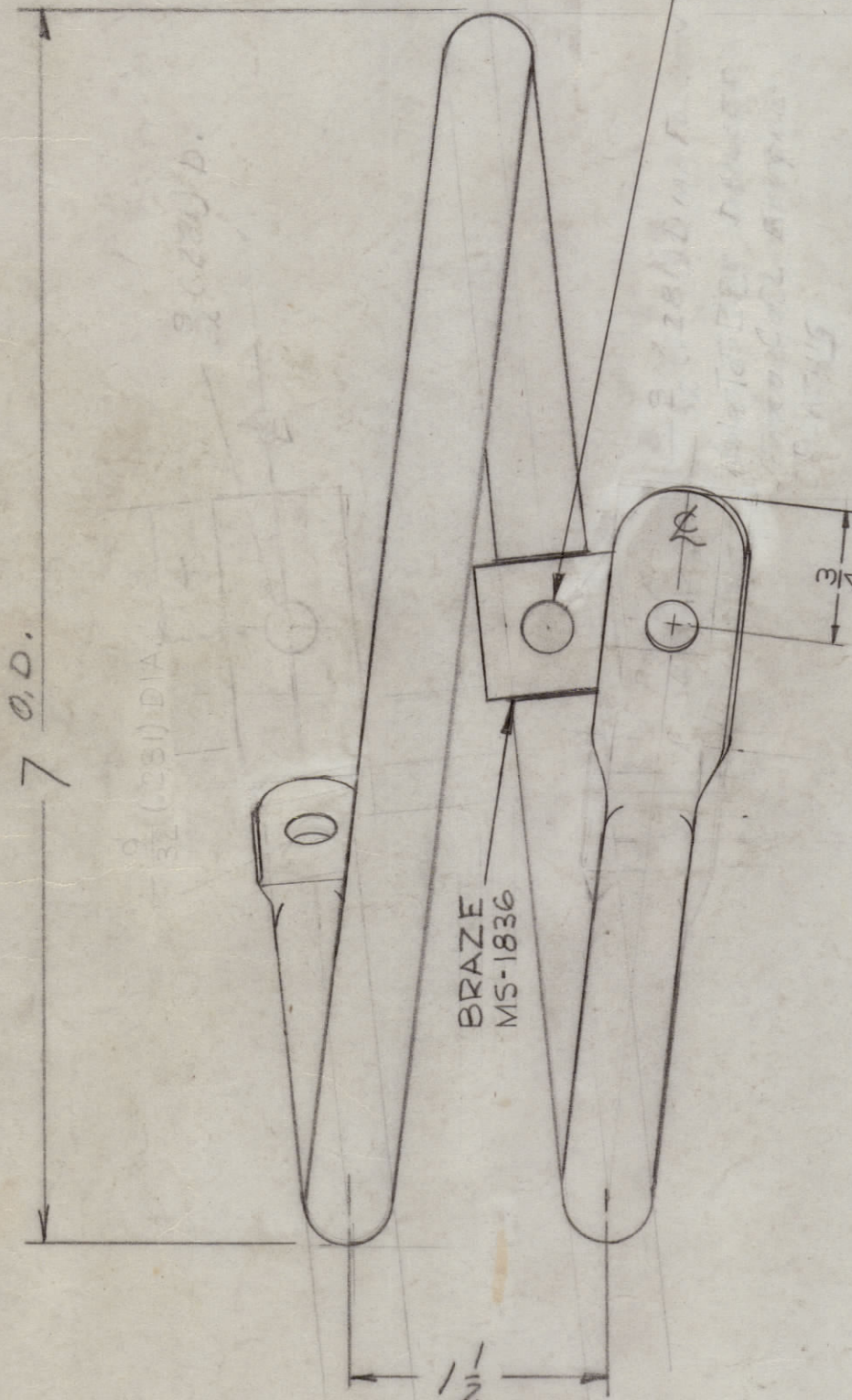
MAXIMUM ALLOWABLE TOLERANCES HAVE BEEN DETERMINED AND DEVIATIONS WILL BE CAUSE FOR REJECTION. REMOVE ALL BURRS AND SHARP EDGES.

NOTICE TO PERSONS RECEIVING THIS DRAWING

THE TECHNICAL MATERIEL CORPORATION claims proprietary right in the material disclosed herein. This drawing is issued in confidence for engineering information only and may not be reproduced or used to manufacture any item shown hereon without permission from THE TECHNICAL MATERIEL CORPORATION to the user. This drawing is loaned for mutual assistance and is subject to recall at any time.

Property of:
THE TECHNICAL MATERIEL CORPORATION
MAMARONECK, NEW YORK

9/32 (.281) DIA. FOLLOW THRU HOLE TO BE DRILLED THRU COIL BEFORE PLATING



A-1646 F

SUPERSEDED
DIRECTLY REPLACED BY CL 170

FINISH: AFTER ASSEMBLY
STEP 1 - SILVER PLATE .0005
STEP 2 - CLEAR IRIDITE

| ISSUE | ITEM | CHANGED FROM | DATE | CH. NO. | DRAFTS | CHECKER | ENG. APP. |
|-------|------|---|----------|---------|--------|---------|-----------|
| F | | SUPERSEDED | 6-4-71 | 20369 | RJ | CP | RED |
| E | | 17.1 DESCRIPTION WAS COIL H.F.; ADDED PR. NO. REQ. WASH | 7/29/66 | 16905 | JL | CP | CP |
| D | 1 | END OF COIL REDRAWN 1" DIM. WAS 1 3/4 | 6-22-64 | 11636 | A.M. | CP | CP |
| C | 2 | SQ. ENDS CHANGED TO 3/8 X 1/16 | 5-20-63 | 9992 | AD | CP | CP |
| B | 1 | CLARIFIED PICTORIAL | 12-28-61 | 6112 | H.B. | CP | CP |
| A | 2 | MS-1836 ADDED | 7/1/59 | | JL | CP | CP |
| A | 1 | DWG CLARIFIED | | | | | |

TOLERANCES: DEC. DIM. ± 1/64; FRAC. DIM. ± 1/64; ANGULAR DIM. ± 0.5°

SCALE: CP

DRILL, PUNCH, COMMERCIAL STOCK SIZES AND MANUFACTURERS TOLERANCES ARE NOT INCLUDED.

| REQ. PER UNIT | MODEL | PROJECT NO. | ASSY. NO. | DATE |
|---------------|----------|-------------|-----------|---------|
| 1 | GPT-10KW | | R.F. DECK | 2-10-59 |

| REQ. ITEM | PART NO. | DESCRIPTION | SYMBOL |
|--------------------|----------|---|--------|
| 1 | MS-1836 | CENTER TERMINAL, HF COIL | |
| X | TU100-8N | TUBE, COPPER | |
| 1/2 O.D. TUBE | | THE TECHNICAL MATERIEL CORP. MAMARONECK, NEW YORK | |
| COPPER | | TCL-170 ASSY | |
| MATERIAL | | HIGH FREQ. COIL | |
| WEIGHT PER PC. | | CP | |
| TYPE & TEMPER | | DRAWN: CP, ELEC. DES. APP.: CP, MECH. DES. APP.: CP | |
| HEAT TREAT. SPEC. | | CHECKED: CP, FINAL APPROVAL: CP | |
| SEE NOTE | | A-1646 F | |
| FINISH & SPEC. NO. | | | |