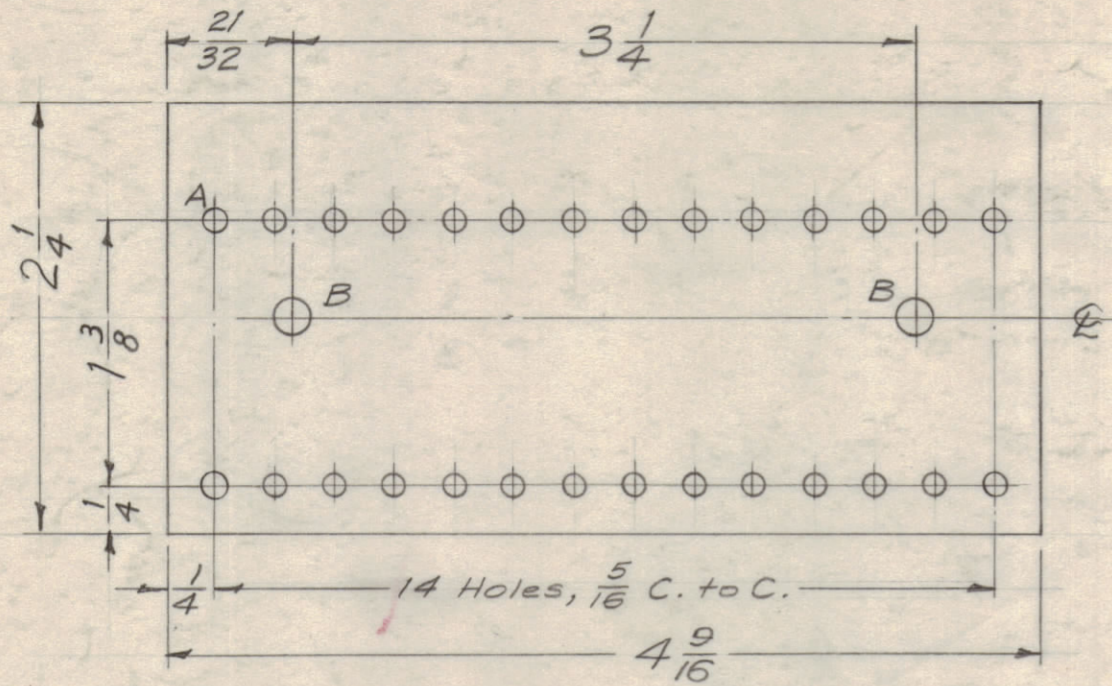


IF IT IS FOUND DESIRABLE TO CHANGE ANY TOLERANCE OR OTHER DETAIL SPECIFIED ON THIS DRAWING NOTIFY THE PURCHASER PROMPTLY.

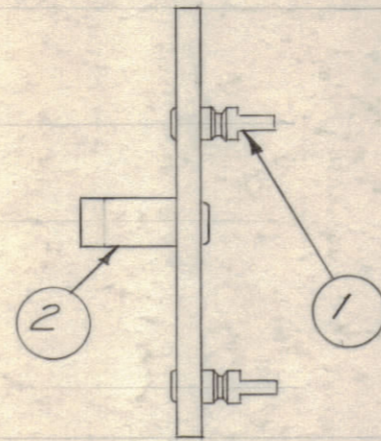
MAXIMUM ALLOWABLE TOLERANCES HAVE BEEN DETERMINED AND DEVIATIONS WILL BE CAUSE FOR REJECTION. REMOVE ALL BURRS AND SHARP EDGES.

A - No. 33 Dr. (.113 D.) 28 Req.

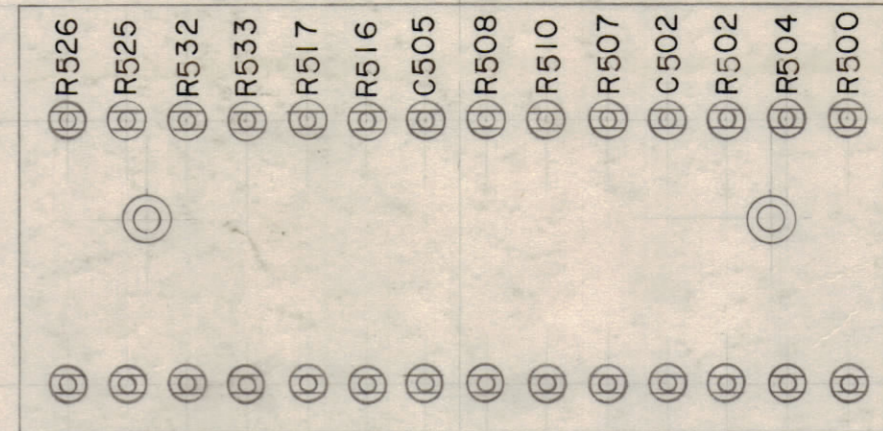
B - No. 12 Dr. (.189 D.) 2 Req.



STAGE 1 MACHINING  
A-1641-1

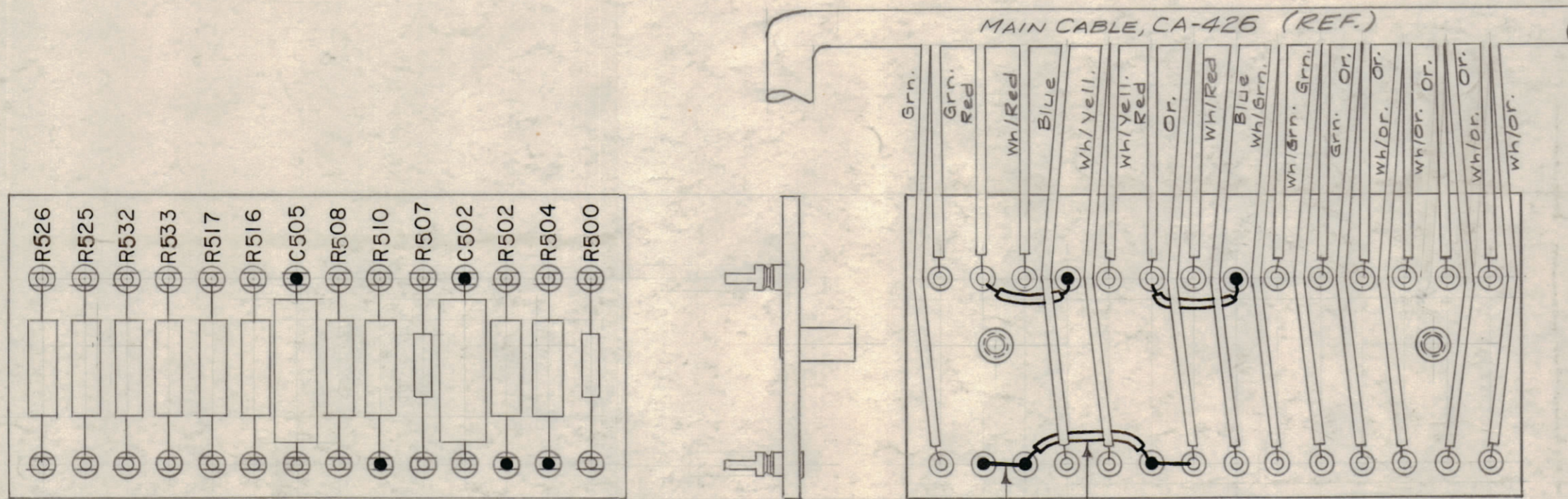


STAGE 2 MECH. ASS'Y.  
A-1641-2



All Lettering to be 1/8 high black Gothic.

STAGE 3 LETTERING  
A-1641-3



NOTE: Cable (CA-426) shown for Ref. Only. Solder all connections indicated by blackened terminals. All other connections (from Cable) to be soldered upon Ass'y. of Terminal Board into Unit.

STAGE 4 ELECTRICAL ASS'Y.  
A-1641-4

A-1641 D

X	12	BS-100	Solder, Soft	
X	11	MWC22(1)UO	Wire, Insulated (Size 22)	31K.
X	10	WL-100-7	Wire, Buss (Size 22)	
2	9	RC32GF683K	Resistor, Fixed, Comp.	R508 R502 R526 R525
2	8	RC32GF472K		R517 R516
2	7	RC32GF471K		
3	6	RC32GF223K		
1	5	RC32GF103K		R510
2	4	RC20GF102K	Resistor, Fixed, Comp.	R507 R500 C505 C502
2	3	CN-100-1	Capacitor, Fixed, Paper, .01	
2	2	TE-108-13	Standoff, Rivet Type	
28	1	TE-109-3	Terminal	

ISSUE	ITEM	CHANGED FROM	DATE	CH. NO.	DRAFTS	CHECKER	ENG. APP.
D	1	ITEMS 5,6,7,8,9 WERE RC 30	5-15-61	4902			
C	1	R504 WAS RC30GF103K	8-19-59	1194			
B	1	SYMBOL SERIES WERE #200	4/1/59				
A	1	LETTERING & ELECT. ASS'Y. ADDED.	2/15/59	811	16		

SCALE: FULL - Do Not Scale

ALL OTHERS	DEC. DIM. ± FRAC. DIM. ± 1/64 ANGULAR DIM. ±	DRILL, PUNCH, COMMERCIAL STOCK SIZES AND MANUFACTURERS TOLERANCES ARE NOT INCLUDED.
------------	--	---

1	TTG	GPT-10K		2-13-59
REQ. PER UNIT	MODEL	PROJECT NO.	ASSY. NO.	DATE

USED ON

REQ. ITEM	PART NO.	DESCRIPTION	SYMBOL
1/8 THK.		THE TECHNICAL MATERIEL CORP. MAMARONECK, NEW YORK	
STOCK SIZE		MAIN TERMINAL BOARD,	
MATERIAL	WEIGHT PER PC.	ALL STAGES (TTG)	
XXXXP Laminate		16413/59	RWB
TYPE & TEMPER		DRAWN	ELEC. DES. APP. MECH. DES. APP.
HEAT TREAT. SPEC.		CHECKED	FINAL APPROVAL
Natural			A-1641 D
FINISH & SPEC. NO.			