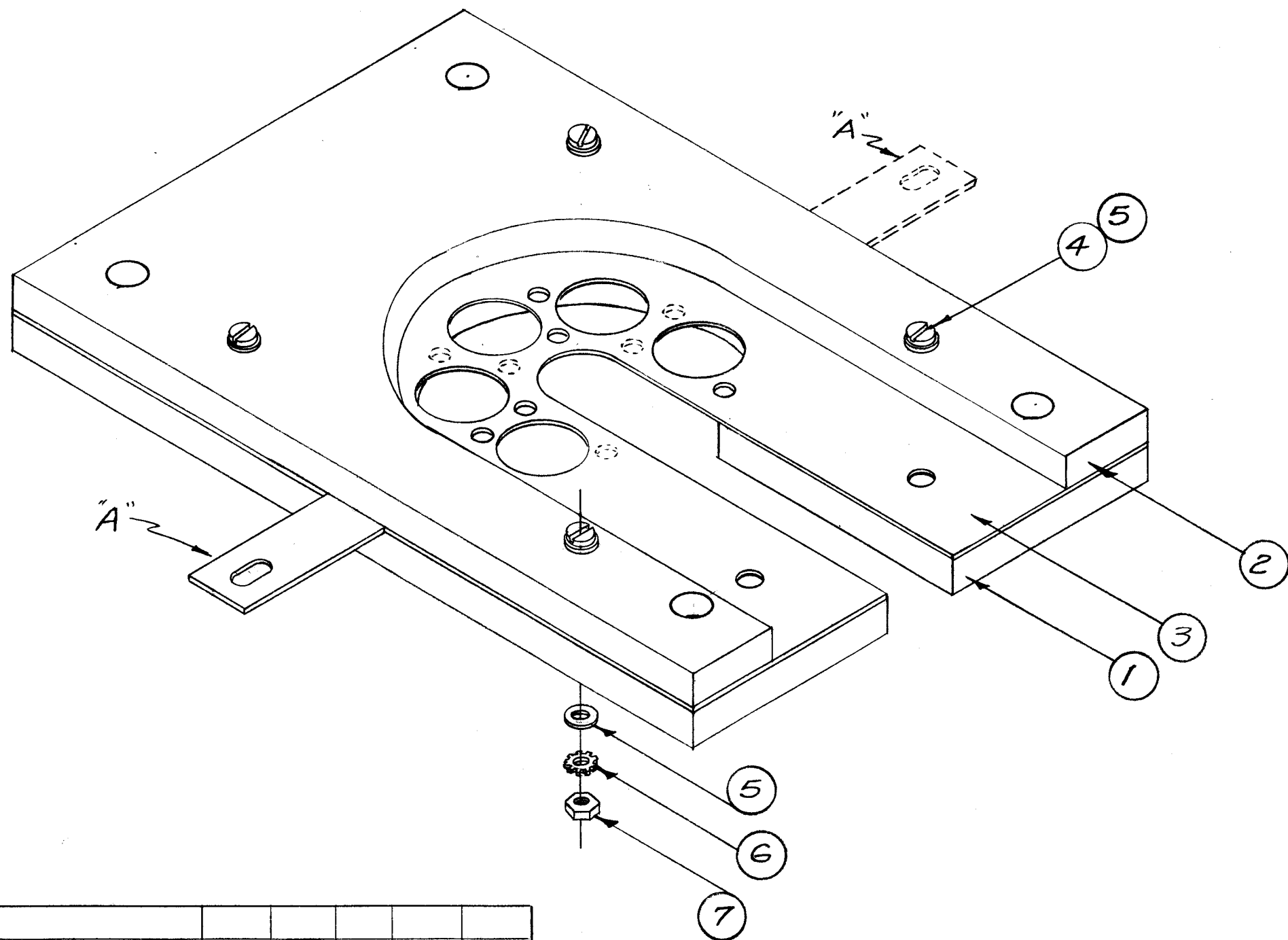


A-1635



A-1635-1 (RIGHT SIDE PRESSURE PLATE)  
Place Tab "A" of item 3 in position indicated by SOLID Lines.

A-1635-2 (LEFT SIDE PRESSURE PLATE)  
Place Tab "A" of item 3 in position indicated by DOTTED Lines.

NOTICE TO PERSONS RECEIVING THIS DRAWING

THE TECHNICAL MATERIEL CORPORATION claims proprietary right in the material disclosed hereon. This drawing is issued in confidence for engineering information only and may not be reproduced or used to manufacture anything shown hereon without permission from THE TECHNICAL MATERIEL CORPORATION to the user. This drawing is loaned for mutual assistance and is subject to recall at any time.

Property of:

THE TECHNICAL MATERIEL CORPORATION  
MAMARONECK, NEW YORK

REQ. ITEM	PART NO.	DESCRIPTION	SYMBOL
4	7	NTH1032BN12	Nut, Hex.
4	6	LWE10MRN	Lockwasher, Ext.
8	5	FW10HBN	Washer, Flat
4	4	SCBS1032BN24	Screw, Machine
1	3	MS-14B1	Plate, Contact, Bottom
1	2	PX-419	Plate, Pressure, Inside, Bottom
1	1	PX-418	Plate, Pressure, Outside, Bottom
STOCK SIZE		THE TECHNICAL MATERIEL CORP. MAMARONECK, NEW YORK	
MATERIAL		PRESSURE PLATE ASS'Y, BOTTOM	
TYPE & TEMPER		HEAT TREAT. SPEC.	DRAWN
FINISH & SPEC. NO.		ELEC. DES. APP.	MECH. DES. APP.

ITEM	CHANGED FROM	DATE	CH. NO.	DRAFTS	CHECKER	ENG. APP.
TOLERANCES						
SCALE: $\frac{1}{4}$						
DIM. $\pm$						
C. DIM. $\pm$						
ILAR DIM. $\pm$						
MAXIMUM ALLOWABLE TOLERANCES HAVE BEEN DETERMINED AND ANY DEVIATIONS WILL BE CAUSE FOR REJECTION. REMOVE ALL BURRS AND SHARP EDGES						

2	TER-5000-50			1-29-62
1 Ea.	TER-5000-70		8A-1587	2/2/59
REQ. PER UNIT	MODEL	PROJECT NO.	ASS'Y. NO.	DATE
USED ON				

6<sup>2</sup>/<sub>2</sub>/59 JNE JHP  
S.G. A-1635