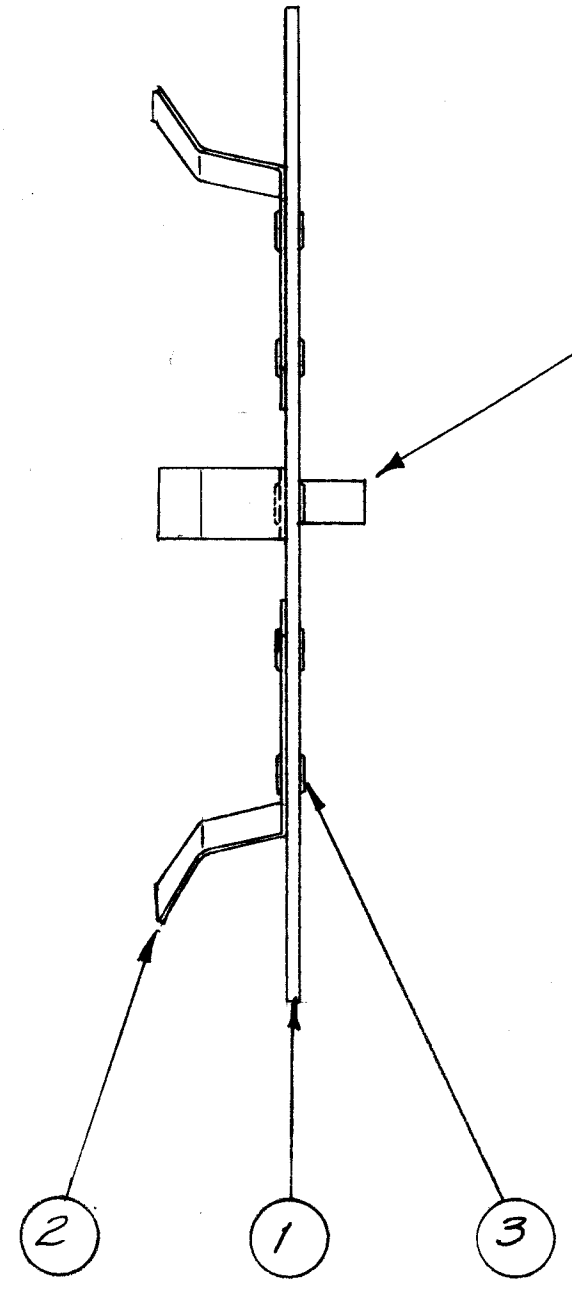
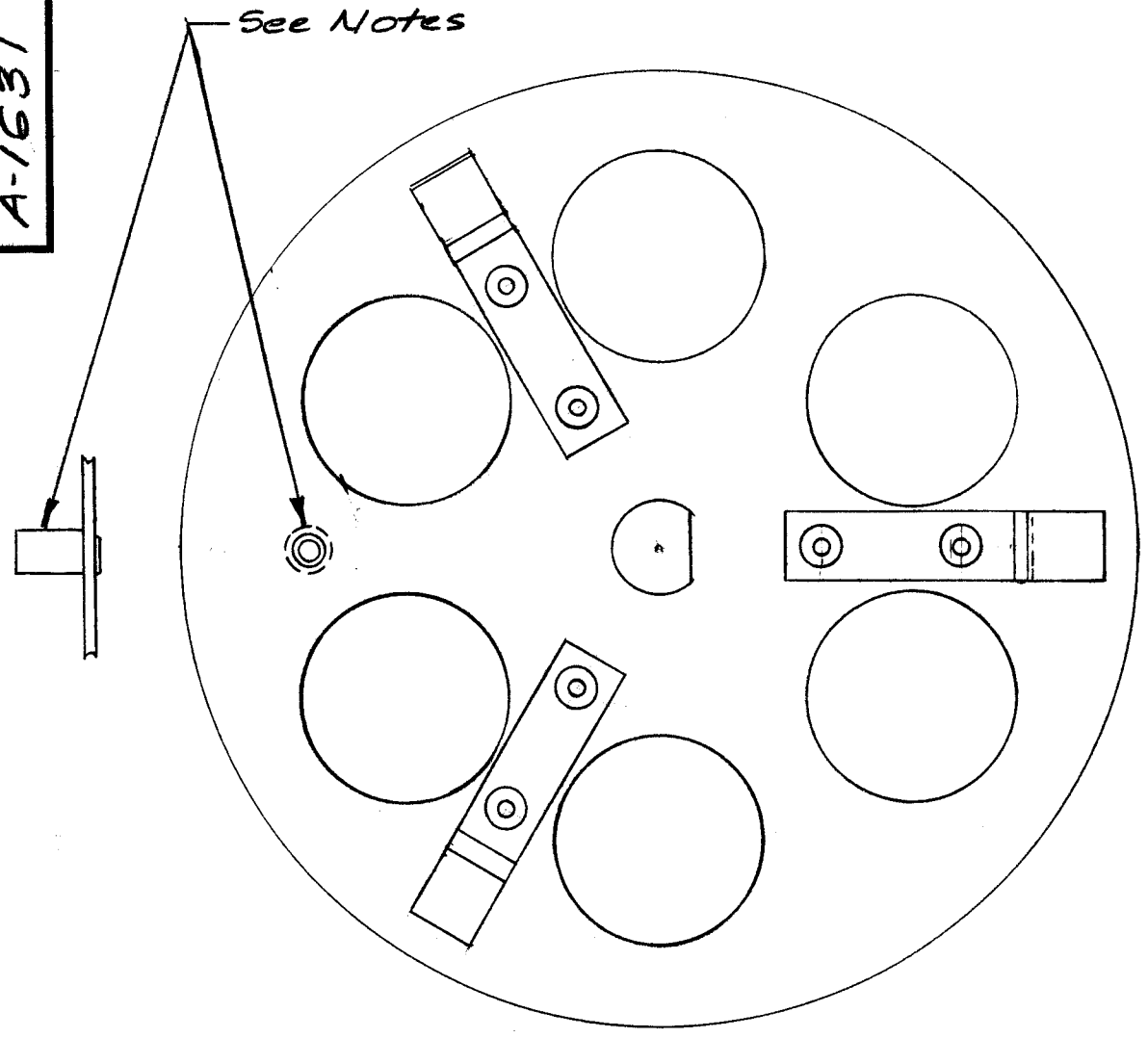


A-1631 A



A-1631-1 , CAP PLATE ASS'Y , TOP (2 Per)
Mount item 4, TE-108-12, as shown
in pictorial.

A-1631-2 , CAP PLATE ASS'Y , BOTTOM (2 Per)
Do NOT MOUNT TE-108-12. Leave Hole
Blank.

NOTICE TO PERSONS RECEIVING THIS DRAWING
THE TECHNICAL MATERIEL CORPORATION claims
proprietary right in the material disclosed hereon.
This drawing is issued in confidence for engineering
information only and may not be reproduced or used
to manufacture anything shown hereon without per-
mission from THE TECHNICAL MATERIEL CORPORA-
TION to the user. This drawing is loaned for mutual
assistance and is subject to recall at any time.
Property of:
THE TECHNICAL MATERIEL CORPORATION
MAMARONECK, NEW YORK

REQ. ITEM	PART NO.	DESCRIPTION	SYMBOL
1 4	See Notes	Standoff, Rivet Type	
6 3	EY-100-1	Eyelet, Flat Flange	
3 2	SP-132	Spring, Pressure	
1 1	MS-1371	Plate, Cap	
STOCK SIZE		THE TECHNICAL MATERIEL CORP. MAMARONECK, NEW YORK	
MATERIAL		CAP PLATE ASS'Y.	
TYPE & TEMPER	HEAT TREAT. SPEC.	DRAWN	CHECKED
FINISH & SPEC. NO.		ELEC. DES. APP.	MECH. DES. APP.

ISSUE	ITEM	CHANGED FROM	DATE	CH. NO.	DRAFTS	CHECKER	ENG. APP.
A		ON PICTORIAL SPRINGS PRESSURE MODIFIED	10-23-63	10199	G.D.L	MT	[Signature]

REQ. PER UNIT	MODEL	PROJECT NO.	ASS'Y. NO.	DATE
6	TER-5000-50			10-23-63
2E3	TER-5000-70		2A-1632	1-29-62
				2-1-59