

A 1628 C

WINDING

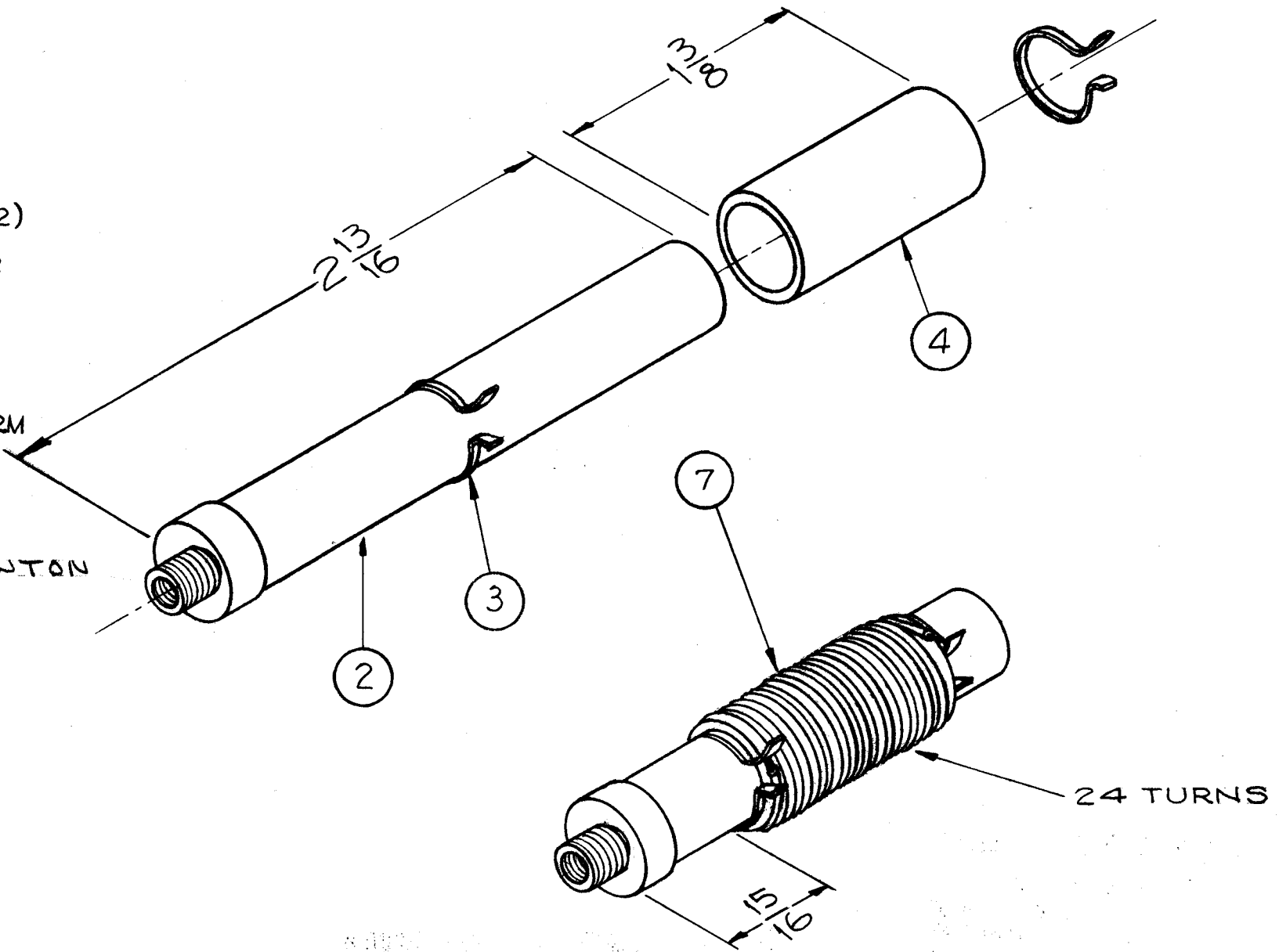
24 TURNS, CLOSE WOUND OF (ITEM 7)
 (# 17 CEROC)

FABRICATION

- 1-SLIP TERMINAL RING (ITEM 3) ON FORM (ITEM 2)
- 2-FORCE FIT OUTER FORM (ITEM 4) ONTO INNER FORM AND CEMENT WITH ITEM 5.
- 3-SLIP SECOND TERMINAL RING ON FORM.
- 4-CEMENT RINGS TO INNER FORM.
- 5-WIND 24 TURNS OF WIRE (ITEM 7) ON OUTER FORM AND SOLDER ENDS TO TERMINALS.
- 6-PAINT WINDING WITH (ITEM 5) AND BAKE FOR 1 HOUR AT 270° F.
- 7-INSERT CORE (ITEM 8) AND TEST ON BOONTON Q METER, MODEL 160 A OR EQUIV.

TEST DATA

L-MIN. 4.2 uhy
 L-MAX. 5.2 uhy
 Q-120 OR GREATER AT 4 MC AND 4.7 uhy
 F-7.9 MC



NOTICE TO PERSONS RECEIVING THIS DRAWING

THE TECHNICAL MATERIEL CORPORATION claims proprietary right in the material disclosed hereon. This drawing is issued in confidence for engineering information only and may not be reproduced or used to manufacture anything shown hereon without permission from THE TECHNICAL MATERIEL CORPORATION to the user. This drawing is loaned for mutual assistance and is subject to recall at any time.

Property of:
 THE TECHNICAL MATERIEL CORPORATION
 MAMARONECK, NEW YORK

1	8	CI-109-17	CORE, TUNING	RED
X	7	WI 125-2	WIRE, #17 CEROC	
X	6	BS-100	SOLDER, SOFT	
X	5	GL 104-2	RESIN, SYNTHETIC U85	
1	4	CF 126-1.37	COIL, FORM	
2	3	TE 153-3	TERMINAL, RING TYPE	
1	2	CF 119-2.812	COIL, FORM	
	1	DELETED		
REQ. ITEM	PART NO.		DESCRIPTION	SYMBOL
THE TECHNICAL MATERIEL CORP. MAMARONECK, NEW YORK				
STOCK SIZE				
MATERIAL				
			J. C. BIELE	
TYPE & TEMPER		HEAT TREAT. SPEC.	DRAWN	CHECKED
			MHO	
FINISH & SPEC. NO.		ELEC. DES. APP.	MECH. DES. APP.	

C	IT 2 WAS CF119-2.81	11.14.66	17231	LHW	JCB		
B	ITEM 7 "WI 125-2" WAS "WI 125-1"; DELE. IT. 1	7.12.66	16536	HJA	JCB	AL	
A	ITEM 8 ADDED	5/7/59	964	JLQ	JCB	AL	
ISSUE	ITEM	CHANGED FROM	DATE	CH. NO.	DRAFTS	CHECKER	ENG. APP.

TOLERANCES		SCALE:
DEC. DIM. ±	MAXIMUM ALLOWABLE TOLERANCES HAVE BEEN DETERMINED AND ANY DEVIATIONS WILL BE CAUSE FOR REJECTION.	
FRAC. DIM. ±	REMOVE ALL BURRS AND SHARP EDGES	
ANGULAR DIM. ±		

1	RTE-2	MULTIPLIER	2-19-59
REQ. PER UNIT	MODEL	PROJECT NO.	ASS'Y. NO.
USED ON			

A 1628 C