

REQ. PER. UNIT	USED ON	DATE
1	ASSY. N.	3-18-59
MODEL	MULT.	
RTF-2		
A-1626		A

WINDING

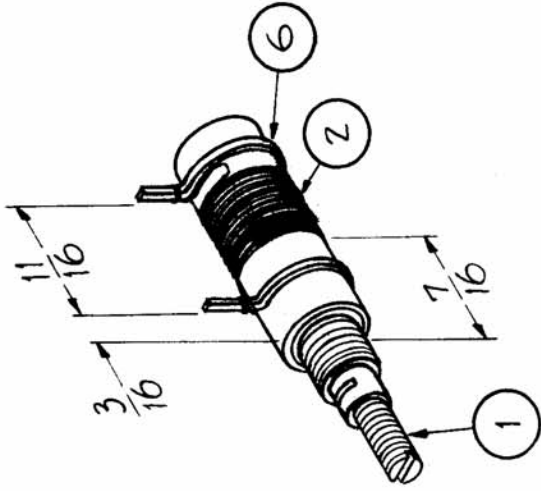
30 TURNS, CLOSE WOUND OF (ITEM 2)
(# 30 DSC).

FABRICATION

- 1-STAKE COIL ENDS TO FORM (ITEM 1) WITH CEMENT (ITEM 3).
- 2-COAT COIL WITH (ITEM 4).
- 3-BAKE 1 HOUR AT 270 °F
- 4-SOLDER LEADS AS SHOWN

TEST DATA

L-MIN. 7.0uhy
L-MAX. 9.5uhy
Q-60 OR GREATER AT 9.5 MC
F-7.9 MC



2	6	TE-153-2	TERMINAL, RING TYPE
X	5	BS 100	SOLDER, SOFT
X	4	GL 104-2	INSULEX U85
X	3	GL 103	CEMENT
X	2	WI 107-11	WIRE # 30 DSC
1	1	CF 107-2N	COIL FORM

REG. ITEM	PART NO.	DESCRIPTION	SYMBOL
		THE TECHNICAL MATERIEL CORP.	
		MAMARONECK, NEW YORK	
		COIL ASSY 4-8 MC	
		L205	
		J.C. BIELE	FINAL APPROVAL
		DRAWN	
		MHO	A-1626
		ELEC. DES. APP	MECH. DES. APP

ISSUE ITEM	CHANGED FROM	DATE	CH. NO.	DRAFTS	CHECKER	ENG. APP.
A 1	"L" MIN WAS 6.0uhy	4-18-61	4697	M.H.F.	J.C.B.	
TOLERANCES						
DEC. DIM. ±						
FRAC. DIM. ±						
ANGULAR DIM. ±						
SCALE:						
MAXIMUM ALLOWABLE TOLERANCES HAVE BEEN DETERMINED AND ANY DEVIATIONS WILL BE CAUSE FOR REJECTION. REMOVE ALL BURRS AND SHARP EDGES						