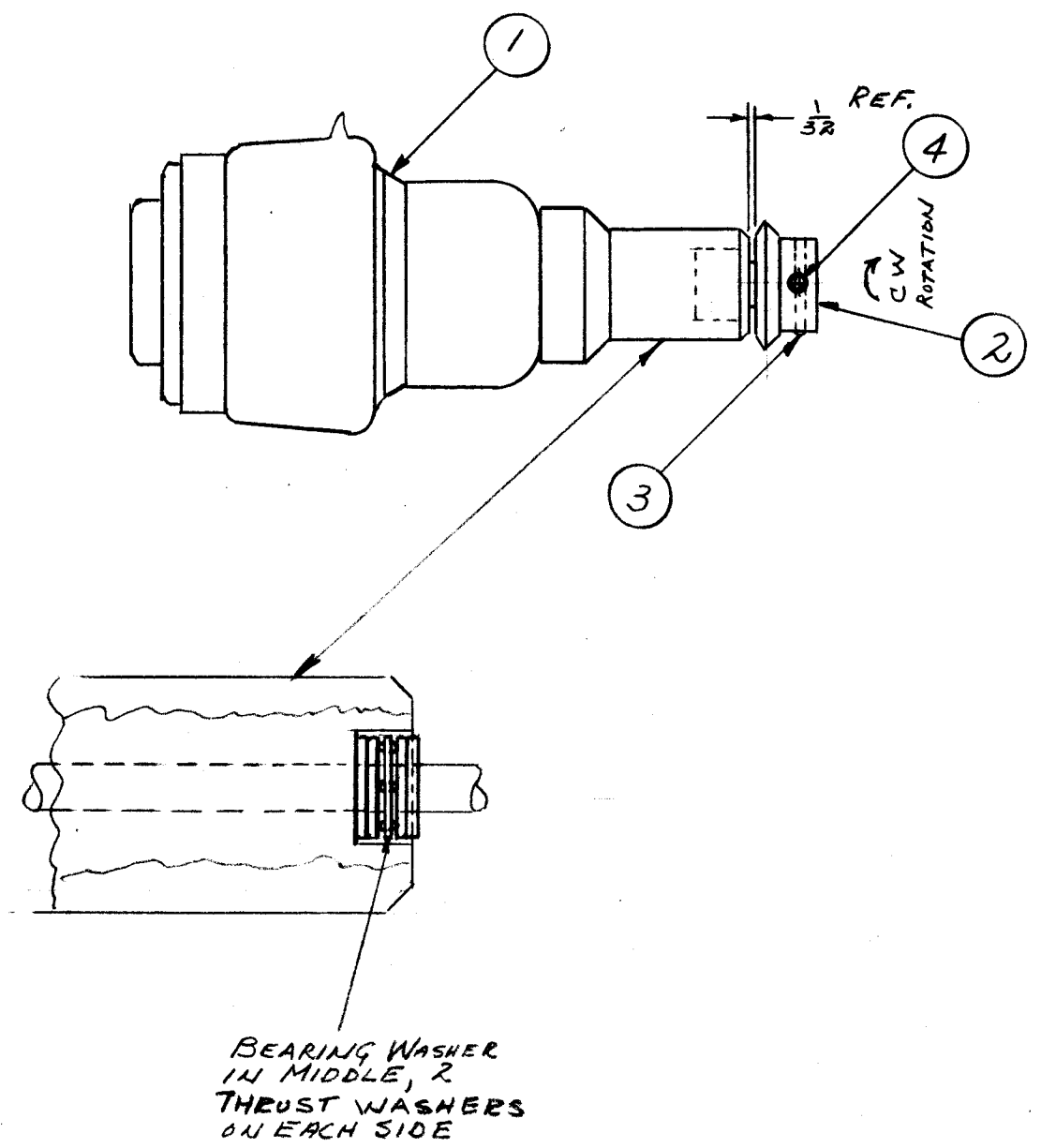


A-1623 A



MFG EXISTING
RETAINING CAP
(STEP 1)

PROCEDURE

1. REMOVE RETAINING CAP & RETURN TO STOCK.
2. ROTATE SHAFT CCW TO LIMIT.
3. BE SURE WASHERS ARE PLACED ON SHAFT IN ORDER SHOWN.
4. PLACE GEAR, ITEM 2, ON SHAFT IN POSITION SHOWN, TIGHTEN SET SCREWS, ITEM 4.
NOTE: ONE SET SCREW MUST BE ON FLAT OF SHAFT.
5. DRILL THROUGH GEAR PILOT HOLE WITH #52 DRILL
6. PIN THROUGH WITH ITEM 3.

NOTICE TO PERSONS RECEIVING THIS DRAWING

THE TECHNICAL MATERIEL CORPORATION claims proprietary right in the material disclosed hereon. This drawing is issued in confidence for engineering information only and may not be reproduced or used to manufacture anything shown hereon without permission from THE TECHNICAL MATERIEL CORPORATION to the user. This drawing is loaned for mutual assistance and is subject to recall at any time.

Property of:
THE TECHNICAL MATERIEL CORPORATION
MAMARONECK, NEW YORK

REQ. ITEM	PART NO.	DESCRIPTION	SYMBOL
2	4	AN565D6H5	SET SCREW
1	3	PN59-062-16	PIN, SPRING
1	2	GR-140	GEAR, MITER
1	1	CB-145	CAPACITOR, VAR., VAC., 12-500mfd

THE TECHNICAL MATERIEL CORP. MAMARONECK, NEW YORK			
STOCK SIZE			
AM-101 ASSY (CAPACITOR, VAR., VAC., W/GEAR)			
MATERIAL			
TYPE & TEMPER	HEAT TREAT. SPEC.	DRAWN	CHECKED
		8.6.	[Signature]
FINISH & SPEC. NO.	ELEC. DES. APP.	MECH. DES. APP.	
			A-1623

ISSUE	ITEM	CHANGED FROM	DATE	CH. NO.	DRAFTS	CHECKER	ENG. APP.
A	1	FLANGE NOTES DELETED	9/18/59	1316	16	[Signature]	OMP
TOLERANCES		SCALE: 2X					
DEC. DIM. ±		MAXIMUM ALLOWABLE TOLERANCES HAVE BEEN DETERMINED AND ANY DEVIATIONS WILL BE CAUSE FOR REJECTION: REMOVE ALL BURRS AND SHARP EDGES					
FRAC. DIM. ±							
ANGULAR DIM. ±							

REQ. PER UNIT	MODEL	PROJECT NO.	ASSY. NO.	DATE
1	AM-101	RFC-1 RFB-1		11-22-60
USED ON				