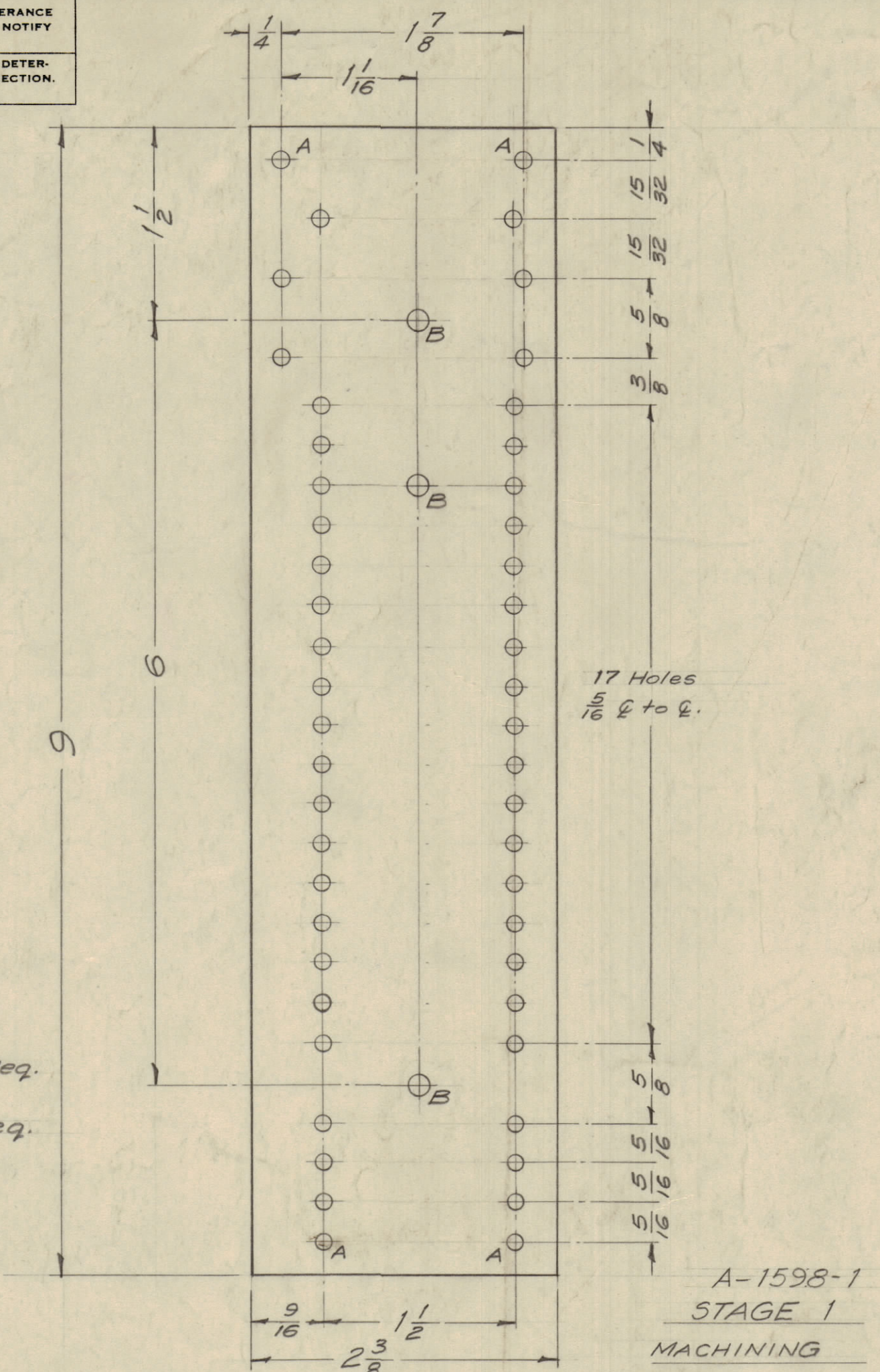
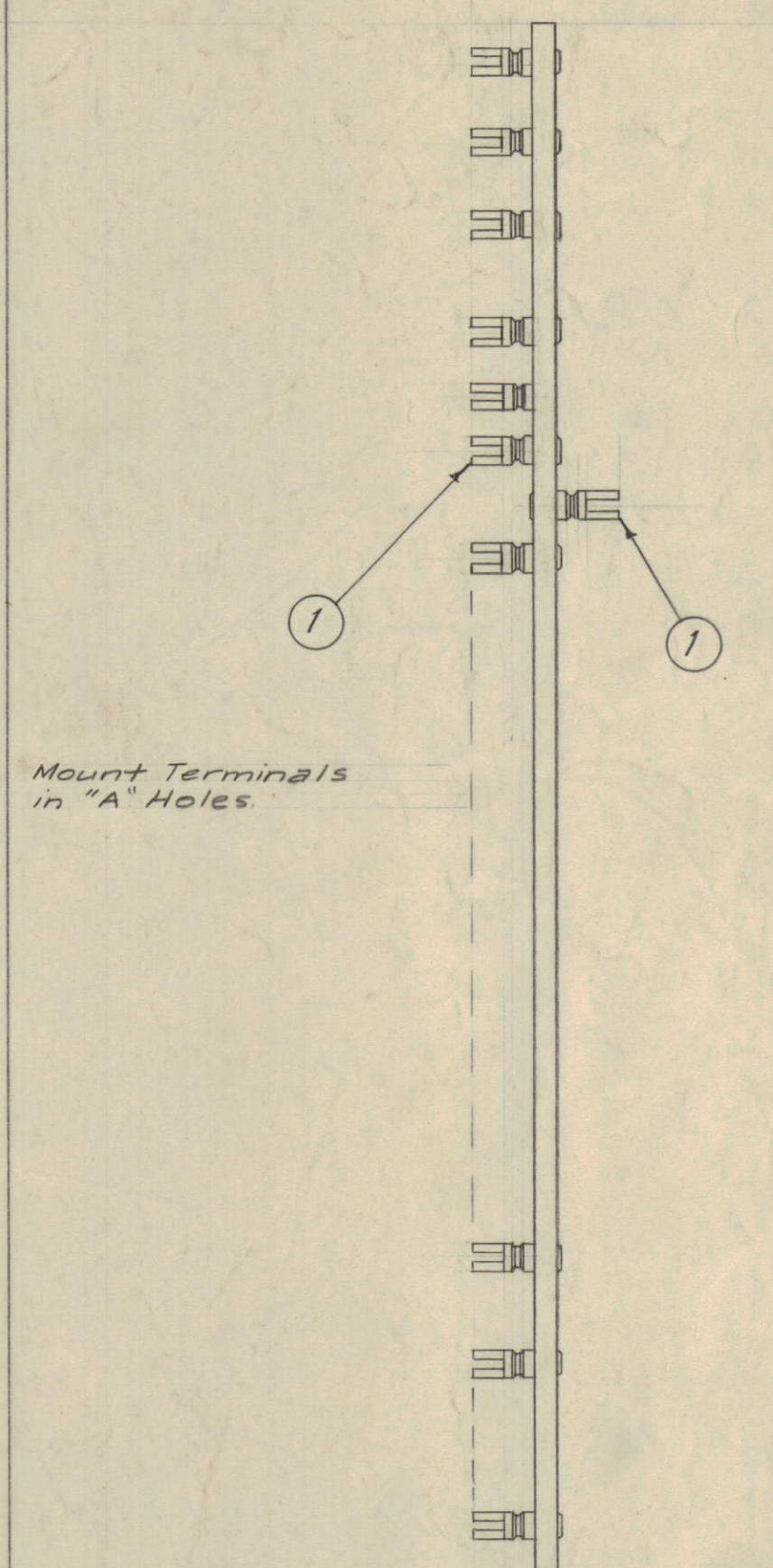


IF IT IS FOUND DESIRABLE TO CHANGE ANY TOLERANCE OR OTHER DETAIL SPECIFIED ON THIS DRAWING NOTIFY THE PURCHASER PROMPTLY.
 MAXIMUM ALLOWABLE TOLERANCES HAVE BEEN DETERMINED AND DEVIATIONS WILL BE CAUSE FOR REJECTION. REMOVE ALL BURRS AND SHARP EDGES

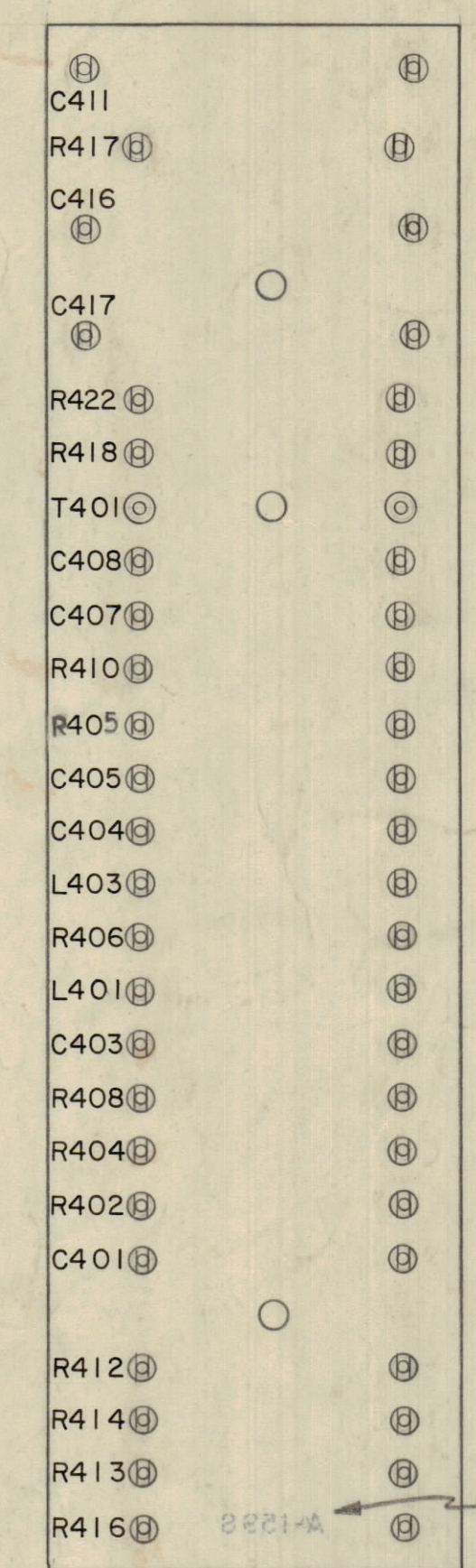


A - No. 33 Dr. (.113) D. - 50 Req.
 B - 1/64 (.171) D. - 3 Req.

A-1598-1
 STAGE 1
 MACHINING



A-1598-3
 STAGE 3
 MECHANICAL ASSEMBLY

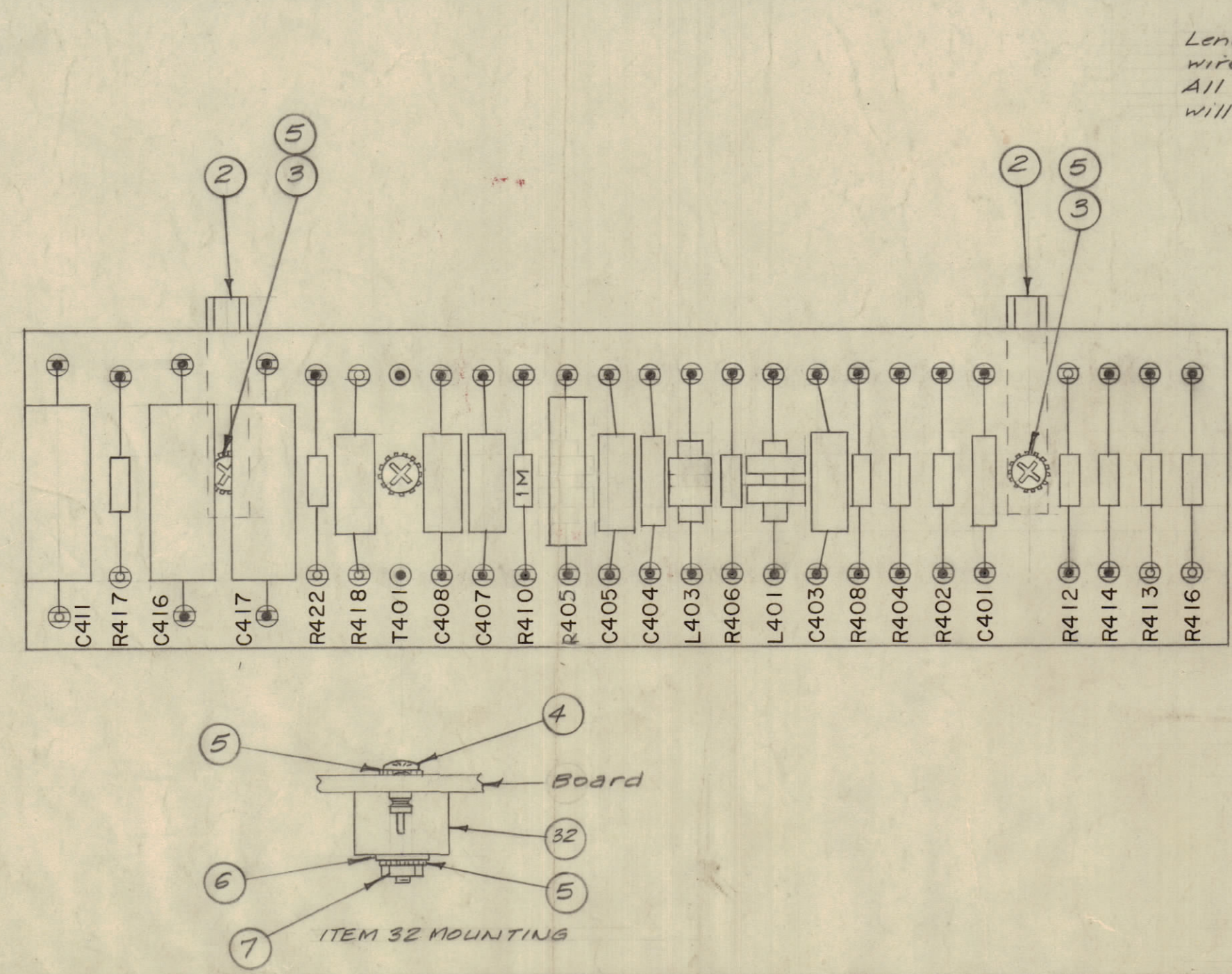


All Lettering to be 1/8" high black Gothic.
 * APPLY SII3 AFTER MARKING

MARKING PROCESS: AS PER TMC SPECIFICATION S-72Z

* FUNGUS PROOFING PER TMC SPECIFICATION S-113

A-1598-2
 STAGE 2
 LETTERING



NOTE: Solder all Terminal Connections indicated by blackened terminals. All other terminals, marked "*", must be soldered upon Assembly of board into Unit.

A-1598-4
 STAGE 4
 FINAL ASSEMBLY

| REQ. ITEM | PART NO. | DESCRIPTION | SYMBOL |
|-----------|-----------------|------------------------------|-------------|
| 1 | 35 RW-107-41 | | R405 |
| 1 | 34 DELETED | | |
| X | 33 B5-100 | Solder, Soft | |
| 1 | 32 TR-186 | Transformer, H.F. | T401 |
| X | 31 PX-104-9-034 | Insulation, Sleeving, 20 Ga. | Blue |
| X | 30 PX-104-6-034 | | Blue |
| X | 29 PX-104-4-034 | | Grn. |
| X | 28 PX-104-3-034 | | Red |
| X | 27 PX-104-2-034 | | Yell. |
| X | 26 PX-104-1-034 | | 20 Ga. BIK. |
| X | 25 PX-104-1-022 | Insulation, Sleeving, 24 Ga. | BIK. |
| X | 24 WL-100-8 | Wire, Buss, 24 Ga. | |
| X | 23 WL-100-7 | Wire, Buss, 22 Ga. | |
| 1 | 22 RC42GF823J | Resistor, Fixed, Comp. | R418 |
| 1 | 21 RC20GF224J | | R417 |
| 1 | 20 RC20GF104J | | R414 |
| 2 | 19 RC20GF105J | | |
| 1 | 18 RC20GF563J | | R412 |
| 1 | 17 RC20GF103J | | R422 |
| 1 | 16 RC20GF181J | | R408 |
| 1 | 15 RC20GF823J | | R406 |
| 2 | 14 RC20GF102J | | |
| 1 | 13 RC32GF333J | Resistor, Fixed, Comp. | R402 |
| 1 | 12 CL-100-5 | Coil, RF | L401 |
| 1 | 11 CL-172 | Coil, RF | L403 |
| 3 | 10 CN-100-4 | Capacitor, Fixed, Paper | |
| 5 | 9 CM35F103F03 | Capacitor, Fixed, Mica | CA01 |
| 1 | 8 CM20F102G03 | Capacitor, Fixed, Mica | CA04 |
| 1 | 7 NTH0632BN8 | Nut, Hex. | |
| 1 | 6 FV0GHBN | Washer, Flat | |
| 4 | 5 LWEO6MRN | Lockwasher, Ext. | |
| 1 | 4 SCEP0632BN14 | Screw, Machine | |
| 2 | 3 SCBP0632BN6 | Screw, Machine | |
| 2 | 2 PM-370 | Post, Mounting | |
| 50 | 1 TE-109-3 | Terminal | |

| ISSUE ITEM | CHANGED FROM | DATE | CN. NO. | DRAFTS | CHECKER | ENG. APP. |
|------------|--------------|------|---------|--------|---------|-----------|
| H | 11-21-58 | 17 | 2 | 1 | | |
| G | 11-18-58 | 11 | 1 | 1 | | |
| F | 11-18-58 | 11 | 1 | 1 | | |

SCALE: 1" = 1" (UNLESS OTHERWISE SPECIFIED)
 DRILL, PUNCH, COMMERCIAL STOCK SIZES AND MANUFACTURERS TOLERANCES ARE NOT INCLUDED.

| REQ. PER UNIT | MODEL | SECTION | PROJECT NO. | ASSY. NO. | DATE |
|---------------|-------|--------------|-------------|-----------|----------|
| 1 | RTF-2 | INTERCONNECT | E-1041-4 | | 11-20-58 |

| REQ. PER UNIT | MODEL | SECTION | PROJECT NO. | ASSY. NO. | DATE |
|---------------|-------|--------------|-------------|-----------|----------|
| 1 | RTF-2 | INTERCONNECT | E-1041-4 | | 11-20-58 |

A-1598 H