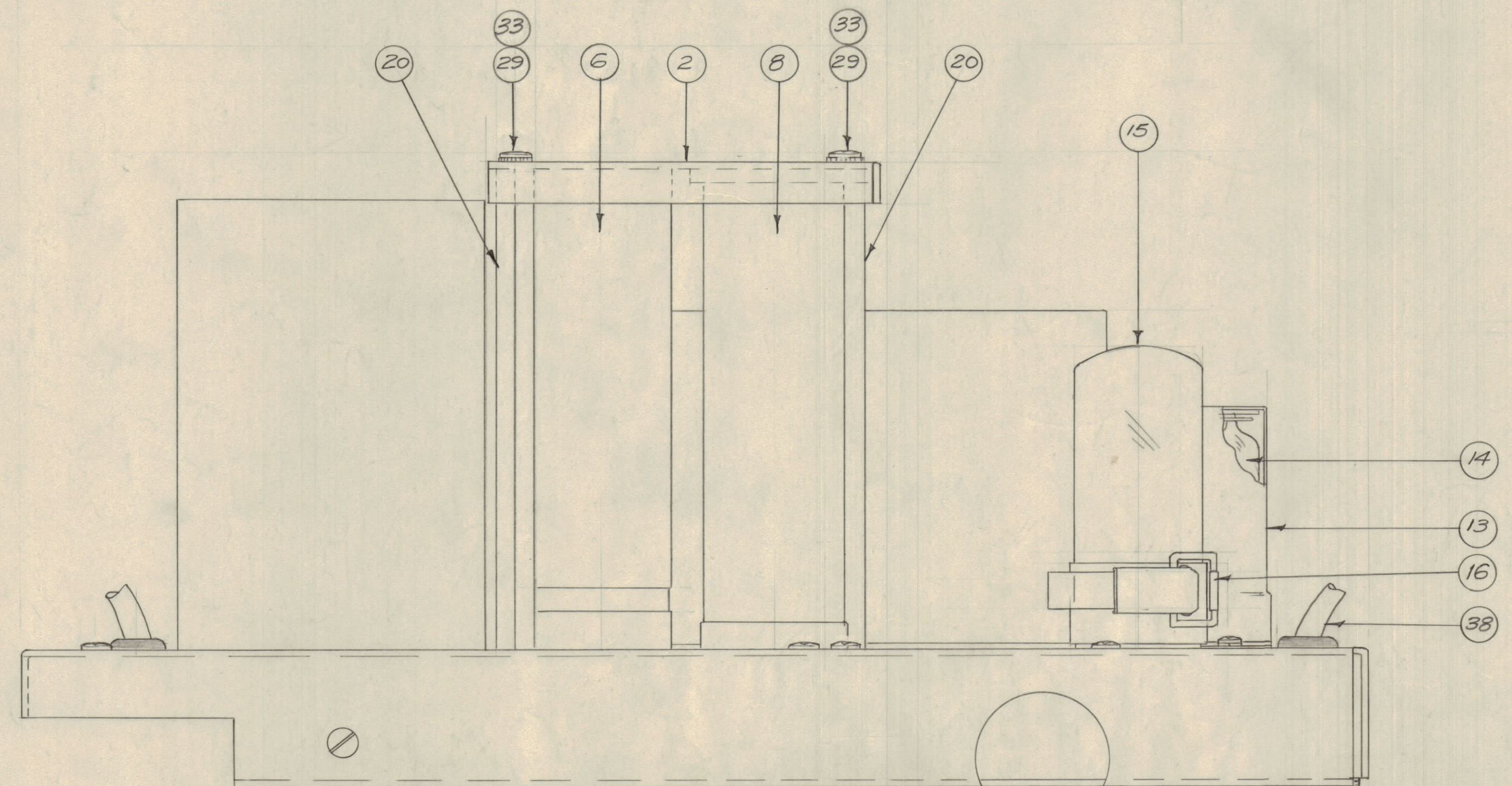
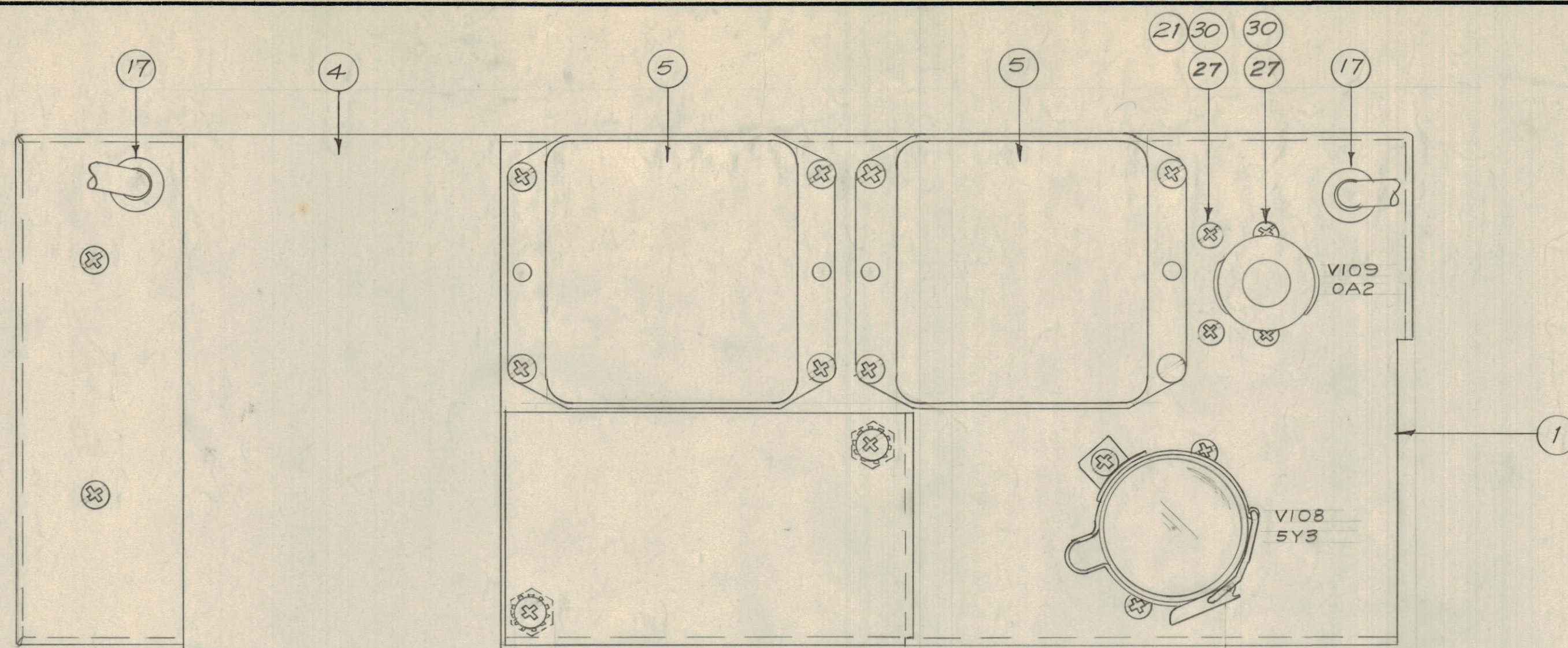
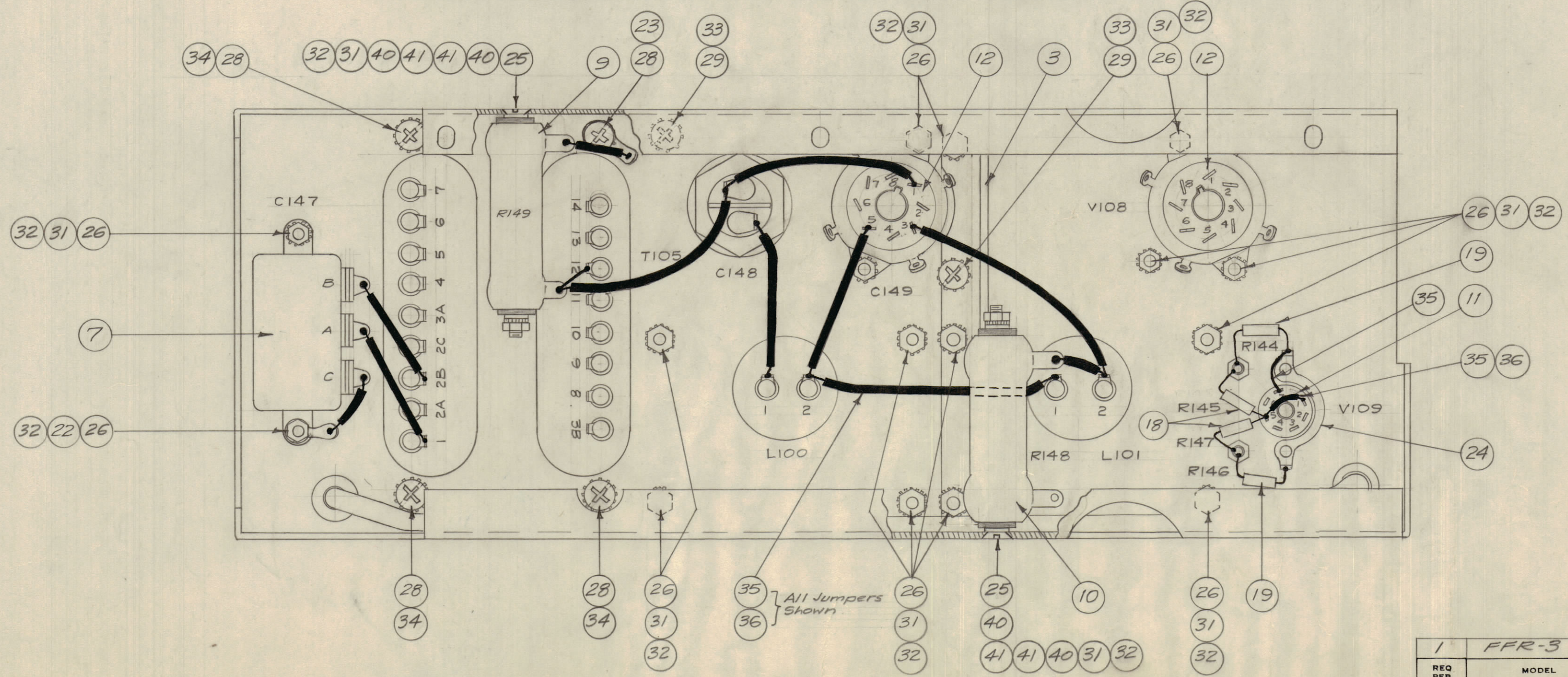


IF IT IS FOUND DESIRABLE TO CHANGE ANY TOLERANCE OR OTHER DETAIL SPECIFIED ON THIS DRAWING NOTIFY THE PURCHASER PROMPTLY.  
 MAXIMUM ALLOWABLE TOLERANCES HAVE BEEN DETERMINED AND DEVIATIONS WILL BE CAUSE FOR REJECTION. REMOVE ALL BURRS AND SHARP EDGES



See ID-231 for Cable Connections →



REQ. ITEM	PART NO.	DESCRIPTION	SYMBOL
4	41	WA-102-6	Washer, Fibre, Shoulder
4	40	FW06H8N	Washer, Flat
1	39	ID-231	Wiring Diagram, P.S., CA-113
1	38	CA-113	Cable, P.S.
X	37	BS-100	Solder, Soft
Red X	36	PX104-3-.034	Insulation, Sleeving (No. 20)
X	35	WL-100-6	Wire, Buss (No. 20)
3	34	LWE10MRN	Lockwasher, Ext.
4	33	LWE08MRN	Lockwasher, Ext.
18	32	NTH0632BN8	Nut, Hex.
17	31	LWE06MRN	Lockwasher, Ext.
4	30	LWS04MRN	Lockwasher, Split
4	29	SCBP0832BN8	Screw, Machine
4	28	SCBP1032BN8	Screw, Machine
4	27	SCBP0440BN4	Screw, Machine
16	26	SCBP0632BN5	Screw, Machine
2	25	SCFP0632BN40	Screw, Machine
1	24	NT-101-4	Nut, Strap
1	23	TE-104-4	Terminal, Locking (No.10)
1	22	TE-104-2	Terminal, Locking (No.6)
2	21	TE-102-2	Terminal, Turret
2	20	TE0832AE13H	Spacer, Special, Threaded
2	19	RC20GF682J	Resistor, Fixed, Comp
2	18	RC20GF154J	Resistor, Fixed, Comp
2	17	EV-102-4	Grommet, Elastic
1	16	CU-118-3S	Clamp, Tube
1	15	5Y3	Tube, Rectifier
1	14	0A2	Tube, V.R.
1	13	TS-102-U03	Shield, 7 Pin Min, Tall
2	12	TS-101-PO1	Socket, Octal
1	11	TS-102-PO1	Socket, 7 Pin Min.
1	10	RW-110-30	Resistor, Fixed, W.W.
1	9	RW-102	Resistor, Fixed, W.W.
1	8	CE52F350R	Capacitor, Fixed, Electrolytic
1	7	CF53BAEF104L	Capacitor, Fixed, Bathub
1	6	CP4181FF405K	Capacitor, Fixed, Paper
2	5	TF-5000	Inductor, 15 Hy.
1	4	TF-196	Transformer, Power
1	3	MS-1332	Brace, Power Supply Chassis
1	2	A-1581	Capacitor Cover & Cushion Assy.
1	1	MS-1346	Chassis, Power Supply

A-1592  
C

REV	DESCRIPTION	DATE	CN. NO.	DRAFTS	CHECKER	ENG. APP.
C	ITEMS 20 WAS TE0832AE13H	7-26-58	9417			
B	HARDWARE CLARIFIED	2-14-58	8257			
A	ITEMS 25 & 26 added to PINS 1 & 5 OF V109 (Jumper)	11-23-58	531	16		

FORM-111

1	FFR-3	A-286	10-27-58
REQ PER UNIT	MODEL	PROJECT NO.	ASSY. NO.
			DATE

THE TECHNICAL MATERIEL CORP.			
MAMARONECK, NEW YORK			
POWER SUPPLY CHASSIS ASS'Y.			
STOCK SIZE			
MATERIAL	WEIGHT PER PC.		
TYPE & TEMPER	1610-27-58	P.T.K.	
	DRAWN	ELC. DES. APP.	MECH. DES. APP.
HEAT TREAT. SPEC.		CHECKED	FINAL APPROVAL
			A-1592
FINISH & SPEC. NO.			C