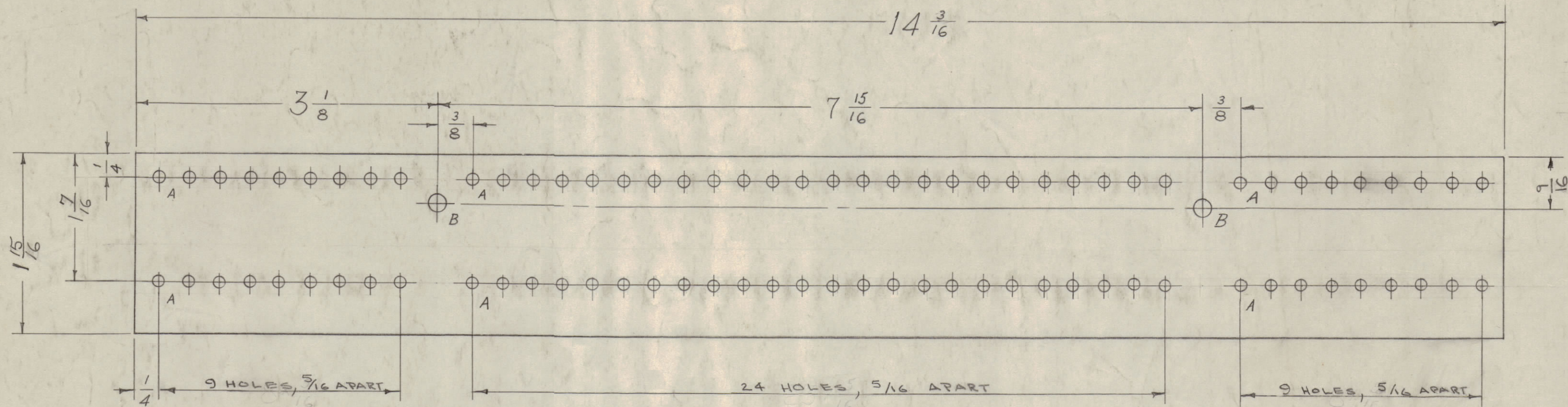
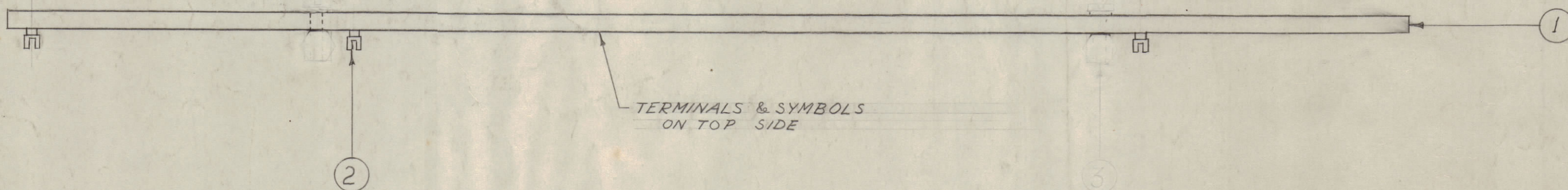


IF IT IS FOUND DESIRABLE TO CHANGE ANY TOLERANCE OR OTHER DETAIL SPECIFIED ON THIS DRAWING NOTIFY THE PURCHASER PROMPTLY.

MAXIMUM ALLOWABLE TOLERANCES HAVE BEEN DETERMINED AND DEVIATIONS WILL BE CAUSE FOR REJECTION. REMOVE ALL BURRS AND SHARP EDGES

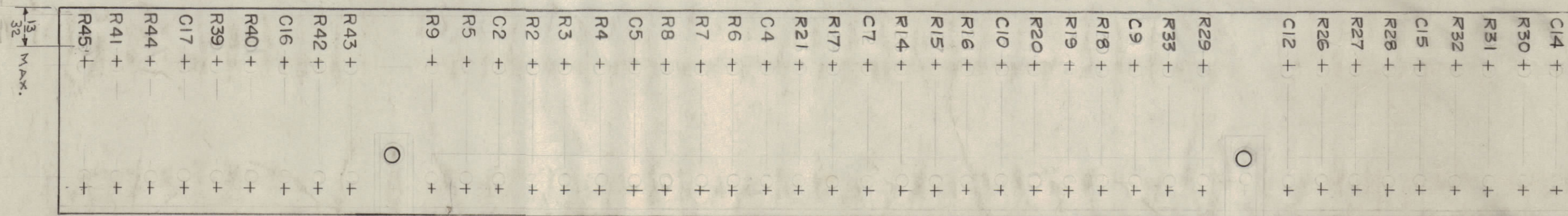


A = 2.9 mm DRILL 84 HOLES
B = 1/64 (.17) D. 2 HOLES



TERMINALS & SYMBOLS ON TOP SIDE

A-1588



TOP SIDE LETTERING DETAIL
(LETTERING 1/8 HIGH)

NOTE:

APPLY FUNGUS RESISTANT VARNISH (S-113) AFTER LETTERING & BEFORE STAKING TERMINALS

1	6	S-113	FUNGUS RESISTANT VARNISH	
2	5	SCR506328C	SCREW MACHINE	
2	7	EMEDGMPS	WASHER, LOCK	
2	3	MS-353	TERM. BR. MOUNTING	
84	2	TE-109-3	TER., TURRET	
1	1	PX-245	TER., BOARD (N.D.)	
REQ. ITEM	PART NO.		DESCRIPTION	SYMBOL
1/8			THE TECHNICAL MATERIEL CORP. MAMARONECK, NEW YORK	
PHENOLIC			MAIN TERMINAL BD. SUB-ASSY.	
MATERIAL			WEIGHT PER PC.	
XXXXP			MACHINING & STAMPING	
TYPE & TEMPER			6/10/11/58	
HEAT TREAT. SPEC.			DRAWN ELEC. DES. APP. MECH. DES. APP.	
SEE NOTE			10-14-58	
FINISH & SPEC. NO.			CHECKED FINAL APPROVAL	
			CR470 A-1588	

ISSUE	ITEM	CHANGED FROM	DATE	CN. NO.	DRAFTS	CHECKER	ENG. APP.

TOLERANCES: ALL DEC. DIM. ±, FRAC. DIM. ±, ANGULAR DIM. ±

SCALE: DRILL, PUNCH, COMMERCIAL STOCK SIZES AND MANUFACTURERS TOLERANCES ARE NOT INCLUDED.

R1	RSC-3	420	A-1589	10/11/58
REQ. PER. UNIT	MODEL	PROJECT NO.	ASSY. NO.	DATE

USED ON