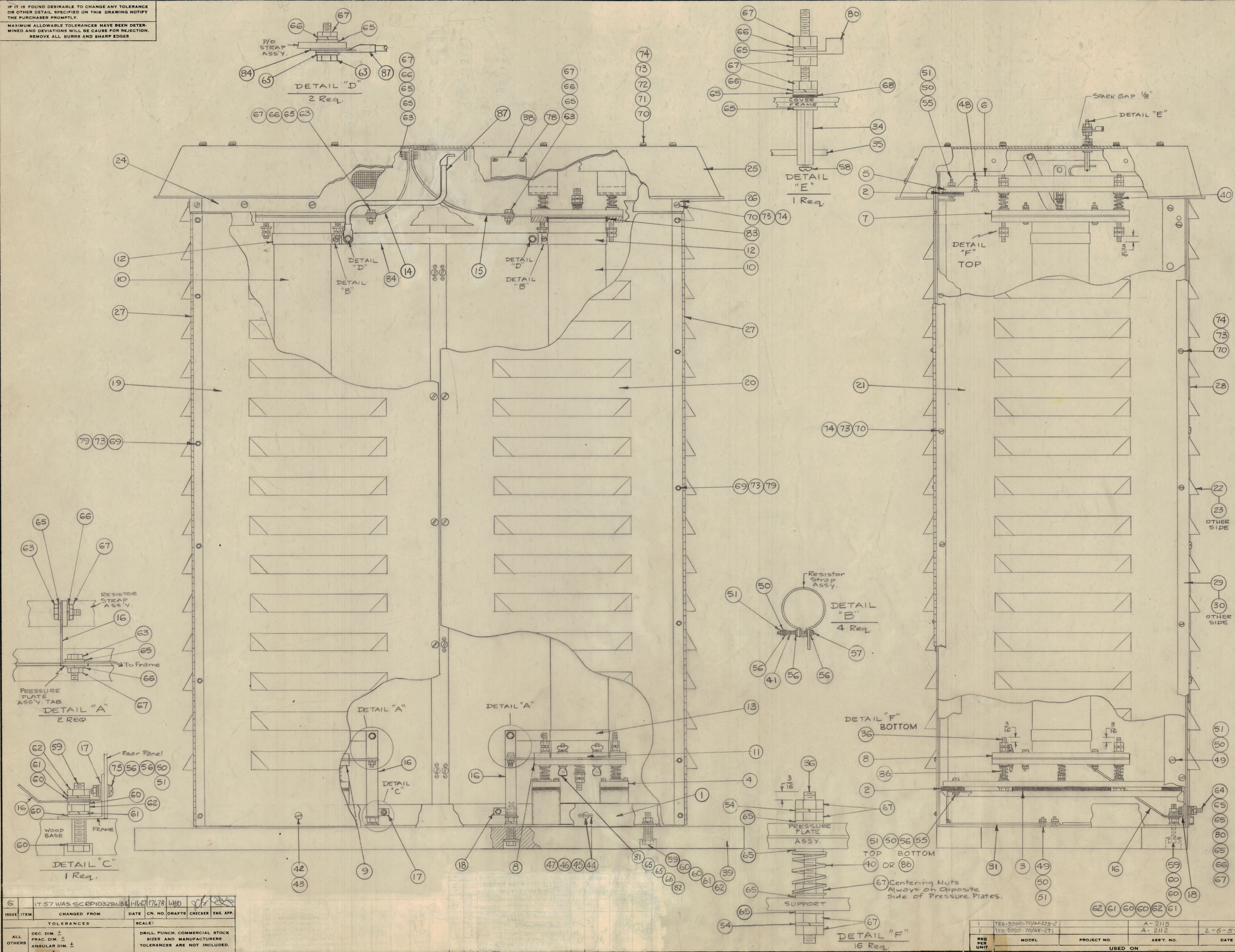


IF IT IS FOUND DESIRABLE TO CHANGE ANY TOLERANCE OR OTHER DETAIL SPECIFIED ON THIS DRAWING NOTIFY THE PURCHASER PROMPTLY.
 MAXIMUM ALLOWABLE TOLERANCES HAVE BEEN DETERMINED AND DEVIATIONS WILL BE CAUSE FOR REJECTION.
 REMOVE ALL BURRS AND SHARP EDGES



REQ. ITEM	PART NO.	DESCRIPTION	SYMBOL
1	87	CA954	LEAD, ELECTRICAL
8	86	SP-127-1	SPRING, COMPRESSION
-	85	DELETED	
2	84	MS-1372-4	Lead, Connector
4	83	IM-171-1	Insulation, Resistor
4	82	NT-110-2520BN	Nut, Wing Type
4	81	SCWS2520BN24P	Thumbscrew
2	80	TE-106	Terminal, Solderless
12	79	NTC0852BNL	Nut, Cap
4	78	SFB04405N4	Screw, Thread Cutting
-	77	DELETED	
-	76	DELETED	
1	75	SCBP1032BN9	Screw, Machine
98	74	NTH0832BN10	Nut, Hex
110	73	LWEO8MRN	Lockwasher, Ext.
27	72	GA-137-3	Gasket, Neoprene
27	71	FWO8HBN	Washer, Flat
98	70	SCBP0832BN12	Screw, Machine
12	69	SCFP0832BN6	Screw, Machine
1	68	GA-104	Gasket, Neoprene
93	67	NTH2520BN14	Nut, Hex
16	66	LW125HRN	Lockwasher, Int.
91	65	FW25HBN	Washer, Flat
7	64	SCHH2520BNIG	Bolt, Hex
9	63	SCHH2520BN12	Bolt, Hex
12	62	NTH5013BN24	Nut, Hex
12	61	LW503MRN	Lockwasher, Split
24	60	FW50HBN	Washer, Flat
10	59	SCHH503BN44	Bolt, Hex Head, 2 3/4 Long
1	58	SCBP0832BN5	Screw, Machine
4	57	SCBP1032BN40	Screw, Machine
30	56	FW10HBN	Washer, Flat
32	55	SCBP1032BN20	Screw, Machine
32	54	LW325MRN	Lockwasher, Split
-	53	DELETED	
-	52	DELETED	
53	51	NTH1032BN12	Nut, Hex
53	50	LW10MRN	Lockwasher, Ext.
76	49	SCFP1032BN8	Screw, Machine
20	48	SCFP1032BN16	Screw, Machine
36	47	NTH0348BN6	Nut, Hex
36	46	LW503MRN	Lockwasher, Split
36	45	SCFP0348BN6	Screw, Machine
18	44	FS-102-1	Spring, "S" Type
18	43	FS-109-3	Ring, Stud Retaining
18	42	FS-110-4	Stud, Slotted Head
4	41	SP-118-5	Spring, Comp., Resistor Strap
8	40	SP-127-3	Spring, Compression, Guide
1	39	WD-126	Support, Mounting, Wood
1	38	NP-195	Nameplate, High Voltage
-	37	DELETED	
16	36	SM2520BN5.00	Stud, Plain, Spring Guide
1	35	PM-509	Rod, Spark Gap
1	34	PM-532	Post, Spark Rod
-	33	DELETED	
-	32	DELETED	
4	31	MS-1062	Plate, Gusset
1	30	MS-1052-2	Molding, Corner, Rear, Right
1	29	MS-1052-1	Molding, Corner, Rear, Left
1	28	MS-1053	Molding, Center, Rear
2	27	HI-103	Hinge, Door
2	26	MS-1049	Molding, Corner, Top
1	25	PX-442	Cover, Top
1	24	PX-367	Panel, Front, Top
1	23	PX-365-2	Panel, Rear, Right
1	22	PX-365-1	Panel, Rear, Left
2	21	PX-366	Panel, Side
1	20	PX-368-2	Door, Front, Right
1	19	PX-368-1	Door, Front, Left
1	18	MS-1484	Lead, Ground, Bottom, Right
1	17	MS-1483	Lead, Ground, Bottom, Left
2	16	MS-1373	Lead, Ground, Bottom
1	15	MS-1372-2	Lead, Ground, Top, Right
1	14	MS-1372-1	Lead, Ground, Top, Left
2	13	A-1585	Resistor Bottom Strap Ass'y.
2	12	A-1586	Resistor Top Strap Ass'y.
1	11	PX-441	Plate, Locking, Inside, Bottom
2	10	A-1632	Resistor & Cap Ass'y.
1	9	A-1635-2	Pressure Plate Ass'y., Btm, Left
1	8	A-1635-1	Pressure Plate Ass'y., Btm, Right
2	7	A-1634	Pressure Plate Ass'y., Top
4	6	PX-359	Brace, Resistor Support
4	5	PX-360	Support, Resistor, Top
4	4	PX-362	Insulator, Bottom Pedestal
4	3	RY-116	Spacer, Pedestal
16	2	RY-115	Shock Absorber, Rubber
1	1	A-1422	Frame Ass'y.

5	IT 57 WAS SCRP1032BN36	1-16-57	17678	WHD		
ISSUE	ITEM	CHANGED FROM	DATE	CN. NO.	DRAFTS	CHECKER
TOLERANCES		SCALE:				
ALL OTHERS	DEC. DIM. ±	DRILL PUNCH, COMMERCIAL STOCK				
	FRACTIONAL DIM. ±	SIZES AND MANUFACTURERS				
	ANGULAR DIM. ±	TOLERANCES ARE NOT INCLUDED.				

1	TER-5000-70/AX-273-2	A-2115			
1	TER-5000-70/AX-271	A-2112		2-6-59	
REQ. PER UNIT	MODEL	PROJECT NO.	ASSY. NO.	DATE	USED ON

A-1587 G