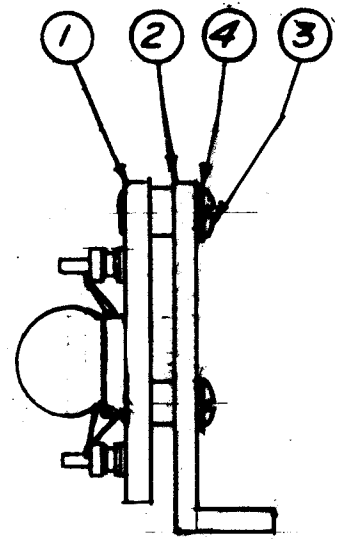
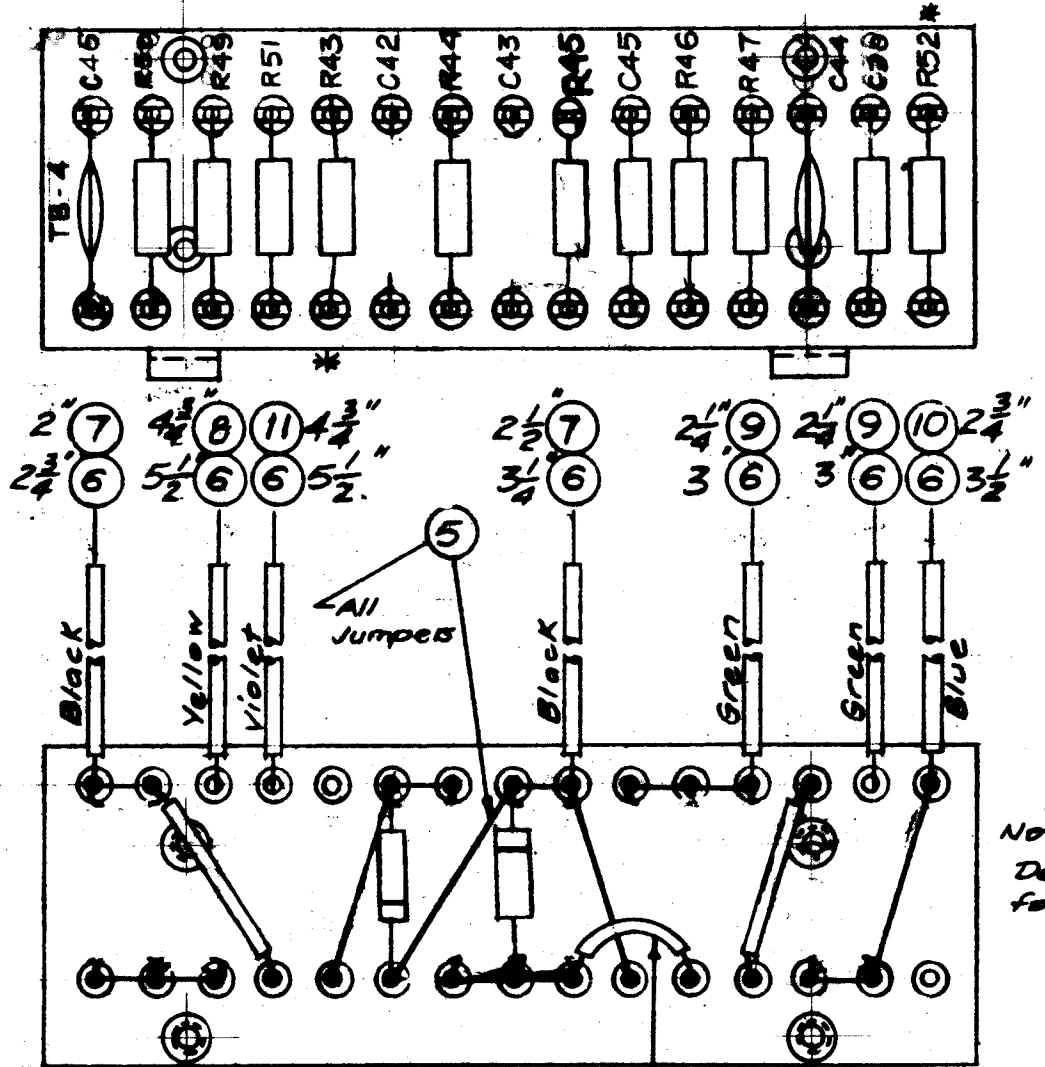


A-1588

Stamping to be 1/8" high black Gothic,
Stamp before Assy. of components.

MARKING PROCESS: AS PER TMC SPECIFICATION S-727

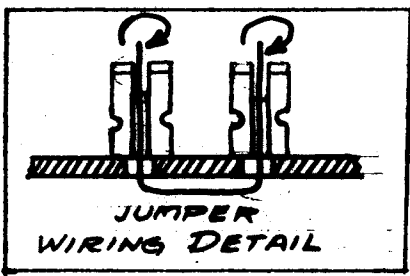


Note: Brackets, item 2,
Deleted from this view
for Wiring Clarity.

* Do Not Solder This End of R43 & R52

NOTE: Assemble Foil Wound
Condensers As Shown

5 } All Insulated
B.K. 7 } Jumpers



NOTICE TO PERSONS RECEIVING THIS DRAWING

THE TECHNICAL MATERIEL CORPORATION claims
proprietary right in the material disclosed hereon.
This drawing is loaned in confidence for engineering
information only and may not be reproduced or used
to manufacture anything shown hereon without per-
mission from THE TECHNICAL MATERIEL CORPORA-
TION to the user. This drawing is loaned for mutual
assistance and is subject to recall at any time.

Property of:

THE TECHNICAL MATERIEL CORPORATION
MAMARONECK, NEW YORK

X	24	BS-100	Solder, Soft	
1	23	RC20GF563K	Resistor, Fixed, Comp.	R52
1	22	RC20GF333K		R51
1	21	RC20GF102K		R50
1	20	RC20GF181K		R49
1	19	RC20GF104K		R47
1	18	RC20GF124K		R46
3	17	RC20GF474K	Resistor, Fixed, Comp.	R43, R44
1	16	CC-100-15	Capacitor, Fixed, Ceramic	C46
1	15	CC215L220J		C45
1	14	CC-100-9		C44
2	13	CN-106C1003J	CAPACITOR, FIXED, MYLAR	C43, C42
1	12	CC32CH101J	Capacitor, Fixed, Ceramic	C30
4 1/2"	11	PX-104-9-.034	Insulation, Sleeving (Size 20)	Violet
2 1/2"	10	PX-104-6-.034		Blue
4 1/2"	9	PX-104-4-.034		Green
4 1/2"	8	PX-104-2-.034		Yellow
7 1/2"	7	PX-104-1-.034	Insulation, Sleeving (Size 20)	Black
26 1/2"	6	WL-100-7	Wire, Buss (Size 22)	
X	5	WL-100-8	Wire, Buss (Size 24)	
4	4	LWEO6MRN	Lockwasher, Ext.	
4	3	SCBS0632BNG	Screw, Machine	
2	2	MS-1321	Bracket, Angle, Term. Bd.	
1	1	A-1578	Terminal Bd. No. 4 Sub-Ass'y	

REQ. ITEM	PART NO.	DESCRIPTION	SYMBOL
#	#	THE TECHNICAL MATERIEL CORP. MAMARONECK, NEW YORK	
#	#	TERMINAL BOARD NO. 4	
#	#	FINAL ASS'Y. & STAMPING (MSR)	
#	#	6/27/68	A J S
TYPE & TEMPER	HEAT TREAT. SPEC.	DRAWN	CHECKED
#	#	P.K.X	
FINISH & SPEC. NO.	ELEC. DES. APP.	MECH. DES. APP.	

ISSUE	ITEM	CHANGED FROM	DATE	CH. NO.	DRAFTS	CHECKER	ENG. APP.
E	1	REVISED INTER-COMM. WIRING	1.5.65	12627		JCB	
D	2	WIRING & COMP. DET. REV.	11.9.64	12840		JCB	
C	1	ITEM 19 WAS RC20GF823K	6-17-64	11425	A.M.		
B	1	ITEM 19 WAS RC20GF1003J	7-26-60	2699	CY	JCB	
A	1	ITEM 19 WAS RC20GF1003J	10/20/58	494	WRE	JCB	
-	1	NEW ASSY. AT PER CH. NO. 437	8/27/58	437	B	P.P.E.	

TOLERANCES		SCALE:	
DEC. DIM. ±		1	MSR-4
FRAC. DIM. ±			
ANGULAR DIM. ±			
MAXIMUM ALLOWABLE TOLERANCES HAVE BEEN DETERMINED AND ANY DEVIATIONS WILL BE CAUSE FOR REJECTION. REMOVE ALL BURRS AND SHARP EDGES			
REQ. PER UNIT	MODEL	PROJECT NO.	ASSY. NO.
			DATE
USED ON			