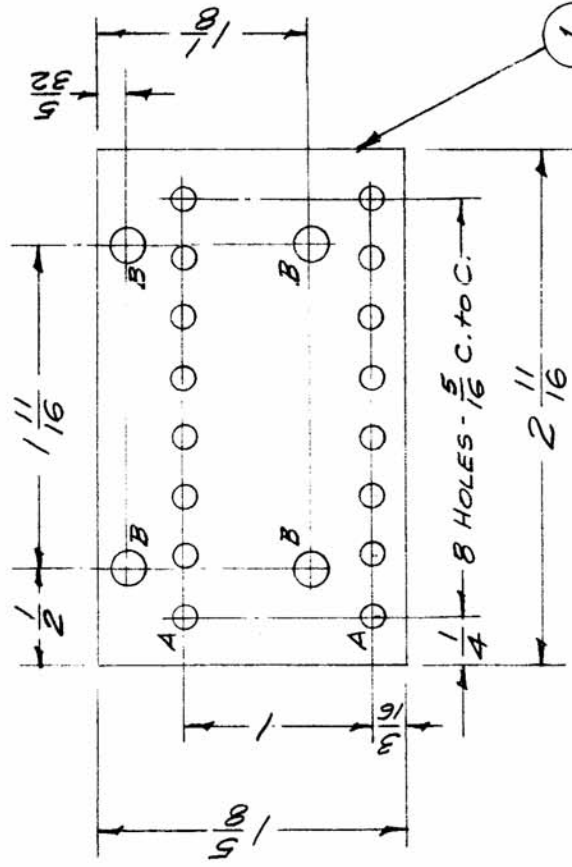


REQ. PER UNIT	MODEL	USED ON ASSY. NO.	DATE
1	MSR-4	A-1577	8-26-58
1	MSR-5	A-1577	7-1-60
1	MSR-3A	A-1577	
1	MSR-6	A-1577	
1	MSR-8	A-1577	

A-1574

A



NOTE:
BOARD MUST BE MARKED
BEFORE ASSEMBLING
ITEMS 2 & 3 PER A1577

SEE NOTE

A- #32 Dr. (.116 Dia) 16 Req.

B- #12 Dr. (.189 Dia) 4 Req.

REQ. ITEM	PART NO.	DESCRIPTION	SYMBOL
4	TE-108-3	Standoff, Rivet Type	
16	TE-109-3	Terminal Lug	
1	PX-417	Terminal Board No. 5 (N.D.)	
		THE TECHNICAL MATERIEL CORP. MAMARONECK. NEW YORK	
		TERMINAL BOARD NO. 5	
		MECH. ASS'Y.	
XXXXP		DRAWN	16/26/58
TYPE & TEMPER		CHECKED	
HEAT TREAT. SPEC.		DRAWN	
		CHECKED	
FINISH & SPEC. NO.		ELEC. DES. APP. MECH. DES. APP.	
			A-1574
			A

ISSUE ITEM	CHANGED FROM	DATE	CH. NO.	DRAFTS	CHECKER	ENG. APP.
2	MODELS: MSR-3A, 6, 8 ADDED	11.9.64	12840			
1	NOTE ADD. SEE NOTE ADDED	8/28/58	437			
1	NEW BOARD AS PER					
1	CN. NO. 437					

SCALE: Full

TOLERANCES

DEC. DIM. ±

FRAC. DIM. ±1/64

ANGULAR DIM. ±

MAXIMUM ALLOWABLE TOLERANCES HAVE BEEN DETERMINED AND ANY DEVIATIONS WILL BE CAUSE FOR REJECTION. REMOVE ALL BURRS AND SHARP EDGES